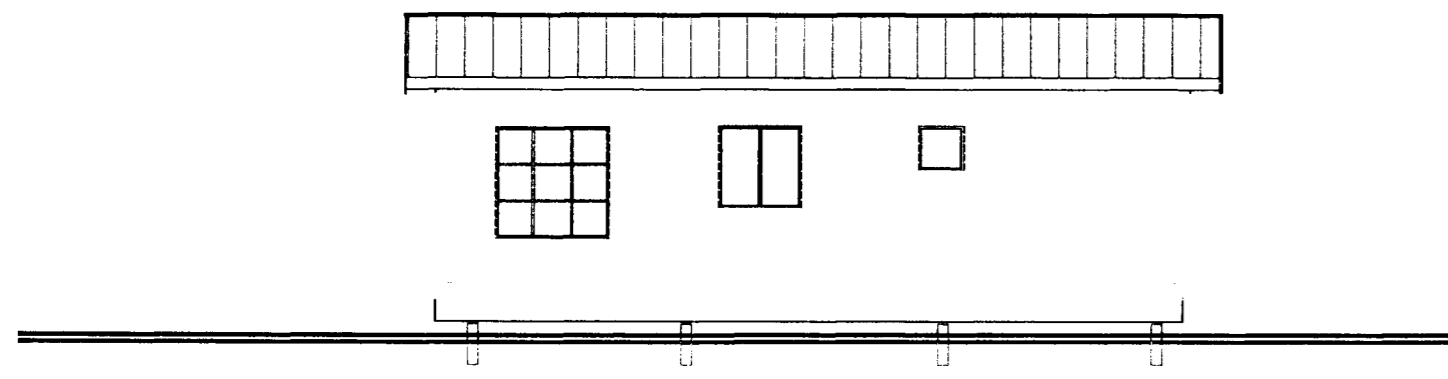
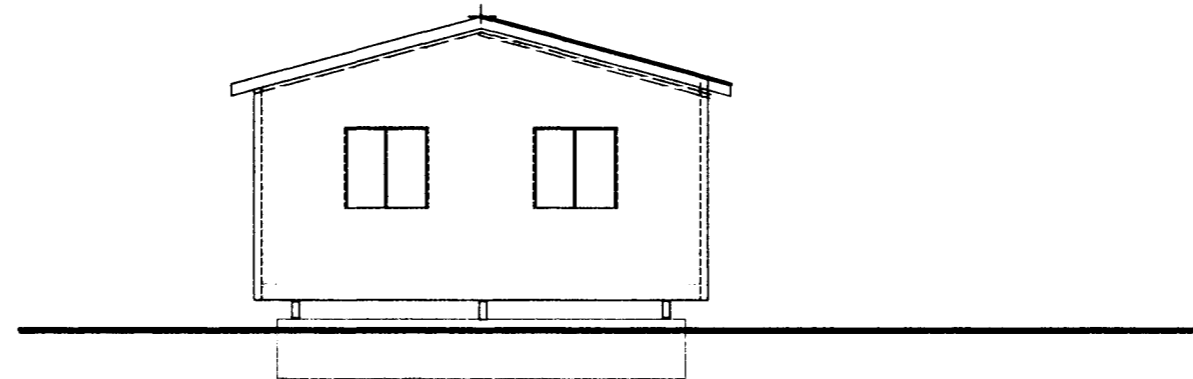


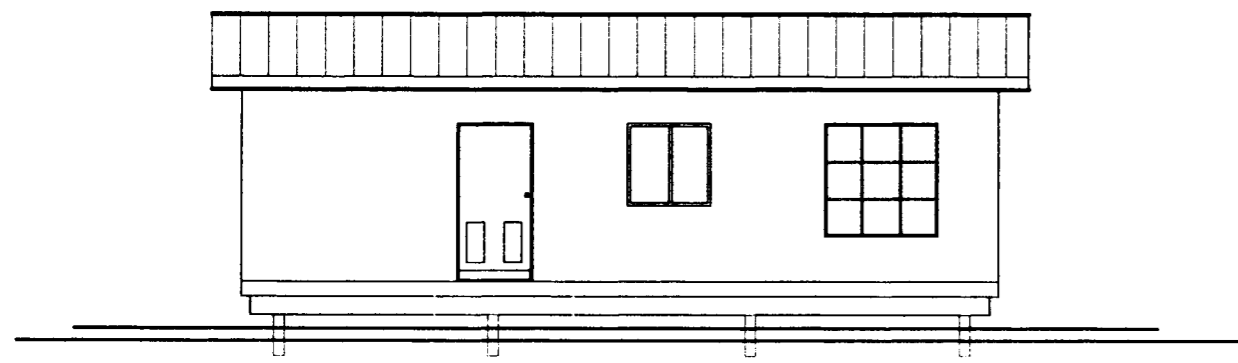
KP



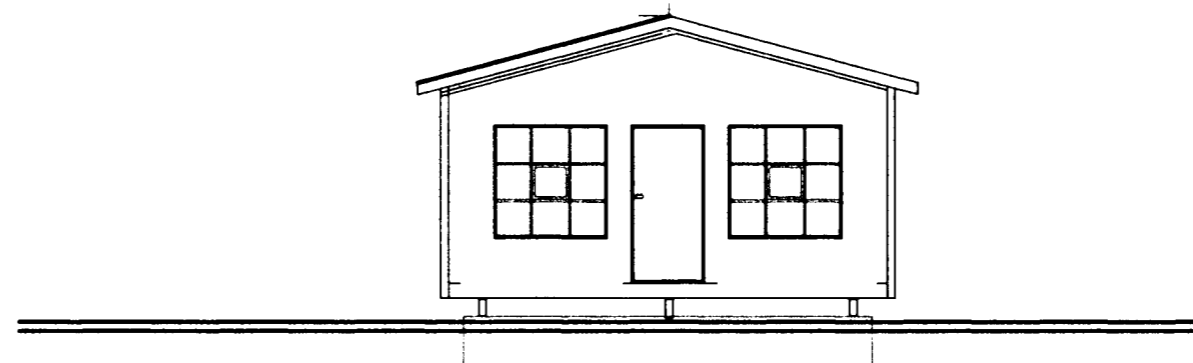
AUSTUR



NORÐUR



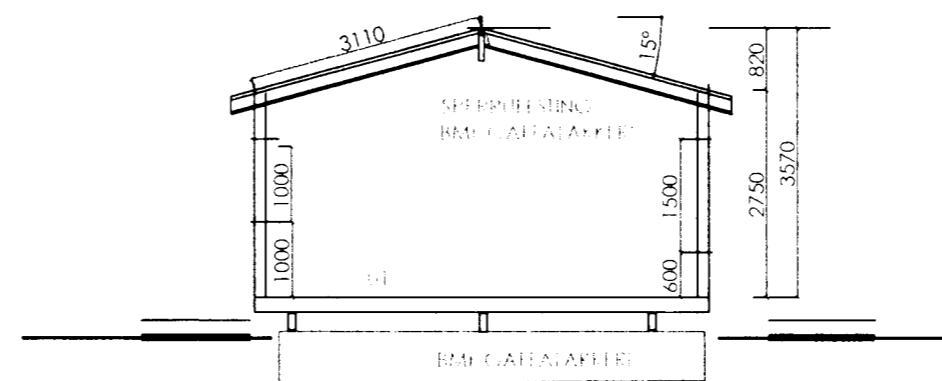
VESTUR



SUÐUR

ÞAKSTRIK
DÁPI
KLENNINGAR 20 X 20 X 150
STRENGIR 20 X 20 X 150
KLENNINGAR 20 X 20 X 150
KLENNINGAR 20 X 20 X 150
KLENNINGAR 20 X 20 X 150
KLENNINGAR 20 X 20 X 150
KLENNINGAR 20 X 20 X 150
KLENNINGAR 20 X 20 X 150

LANNA ER KENNÐ 70 X 100MM
STRENGIR 20 X 20 X 150
KLENNINGAR 20 X 20 X 150

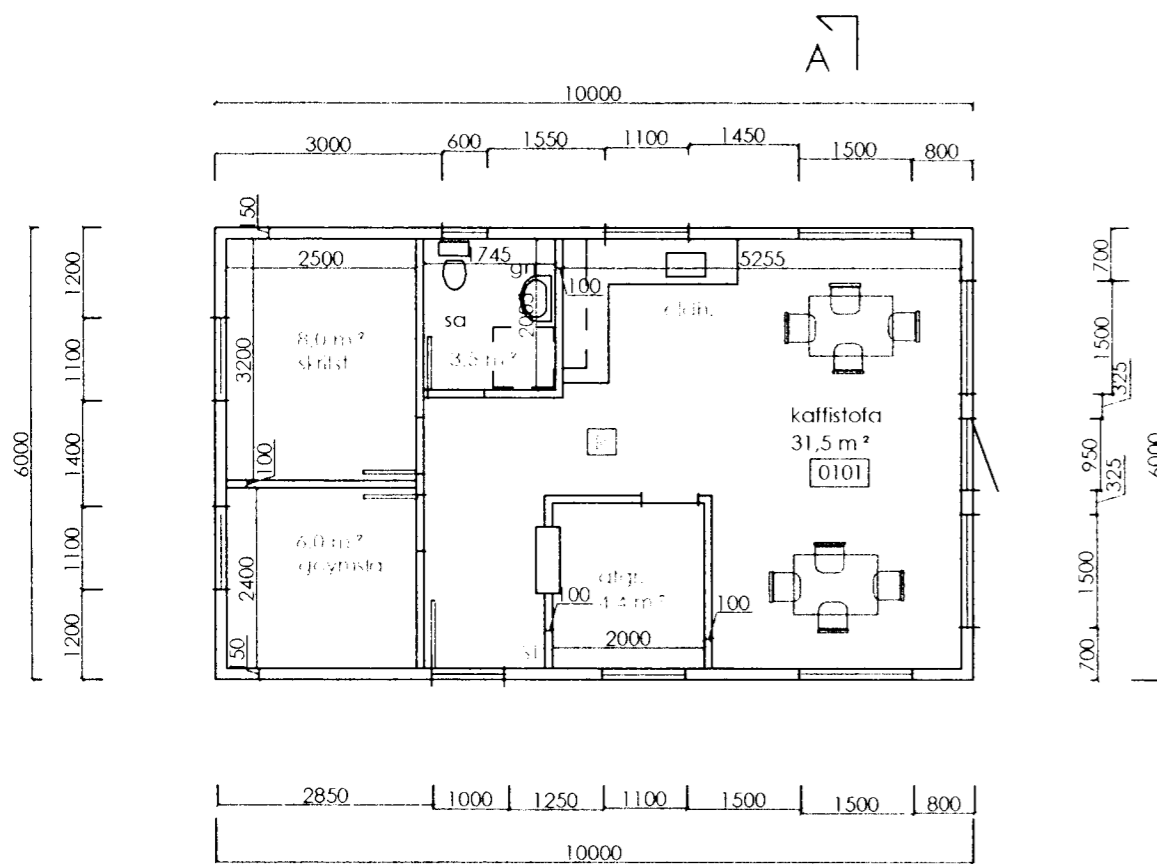


SNID A - A

LANNA ER KENNÐ 70 X 100MM
STRENGIR 20 X 20 X 150
KLENNINGAR 20 X 20 X 150
KLENNINGAR 20 X 20 X 150
KLENNINGAR 20 X 20 X 150
KLENNINGAR 20 X 20 X 150
KLENNINGAR 20 X 20 X 150
KLENNINGAR 20 X 20 X 150
KLENNINGAR 20 X 20 X 150

20 MM TEGLAFLATSTRIK
20 MM TEGLAFLATSTRIK
20 MM TEGLAFLATSTRIK
20 MM TEGLAFLATSTRIK
20 MM TEGLAFLATSTRIK
20 MM TEGLAFLATSTRIK
20 MM TEGLAFLATSTRIK
20 MM TEGLAFLATSTRIK

FRÖÐSÖGUVANAVIRKI
FRÖÐSÖGUVANAVIRKI
FRÖÐSÖGUVANAVIRKI
FRÖÐSÖGUVANAVIRKI
FRÖÐSÖGUVANAVIRKI
FRÖÐSÖGUVANAVIRKI
FRÖÐSÖGUVANAVIRKI
FRÖÐSÖGUVANAVIRKI



BRÁÐABIRGÐASTAÐSETNING

NR. 1

HRINGHELLA NR. 4
HAFNARFIRÐI

SKÝRINGAR	EMBL	LIKANID
[R] REYKSKYNJARI	HRINGHELLA 4	CRUBBAYND OG ÚTIL 1:100
ST. SLÖKKVIÐÆKI	DAÐS: 5.02.2004	SNID 1:100
BO. BJÖRGUNAROP	artík 110101	CSM 1025 9/2007
GN. GÓLFNIDURFALL	ARTIK TEKNISTOFA	SNID 1:100
R. ROTPRÓ	STEINAR GEIRDAL BYGGINGARFRÆÐINGUR B.F.L.	040138 3829 DRANGAVELLIR NR. 2, 230 KEFLAVÍK

A02