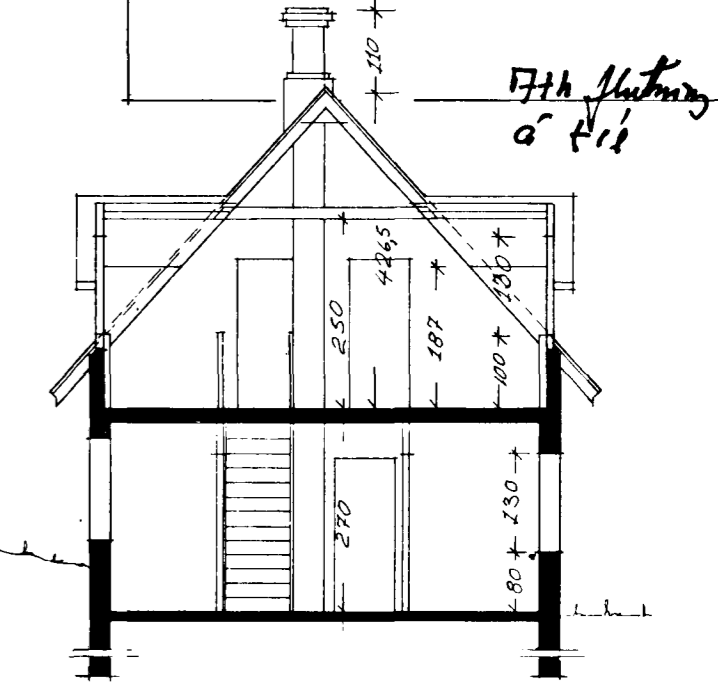
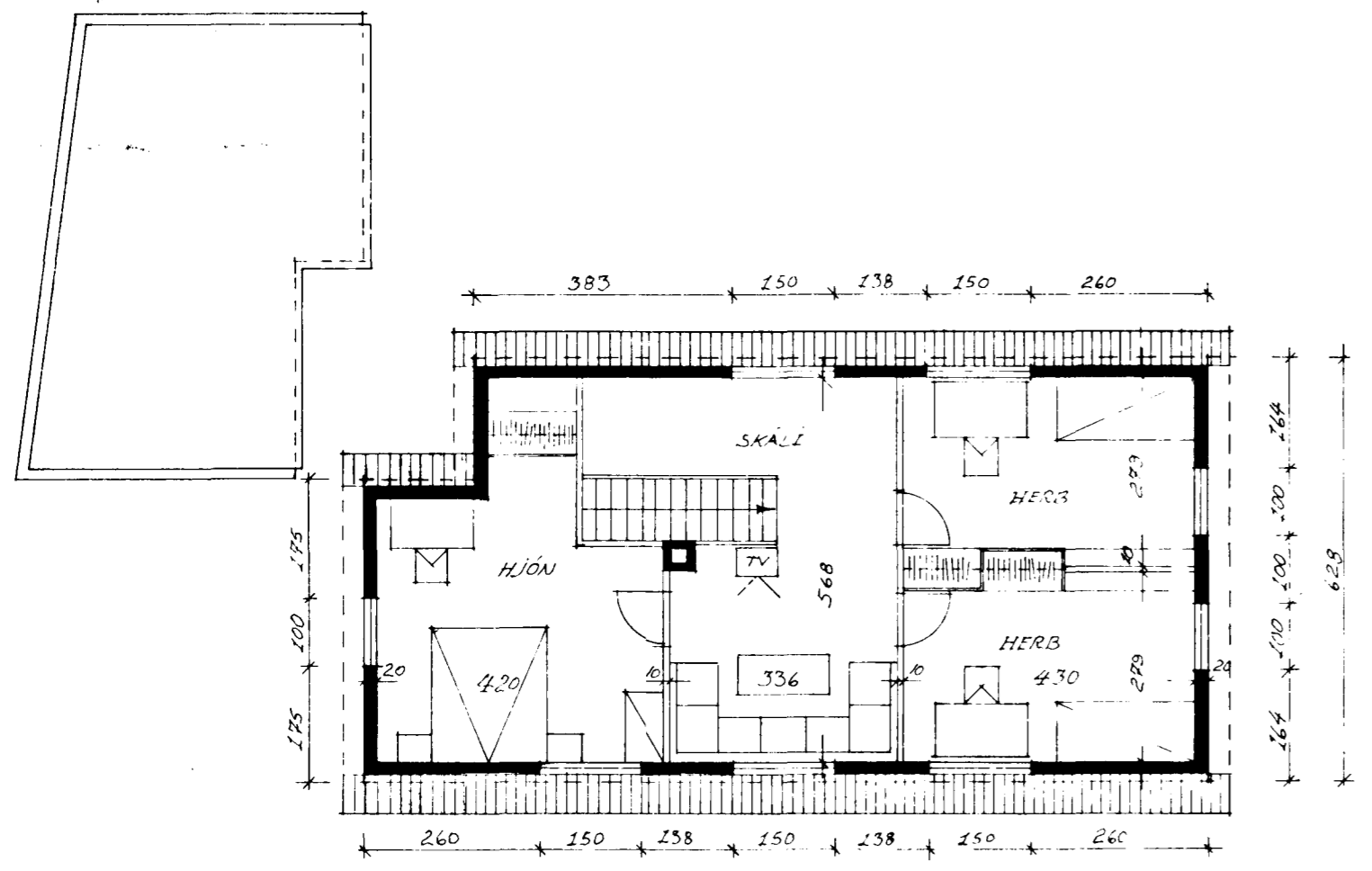


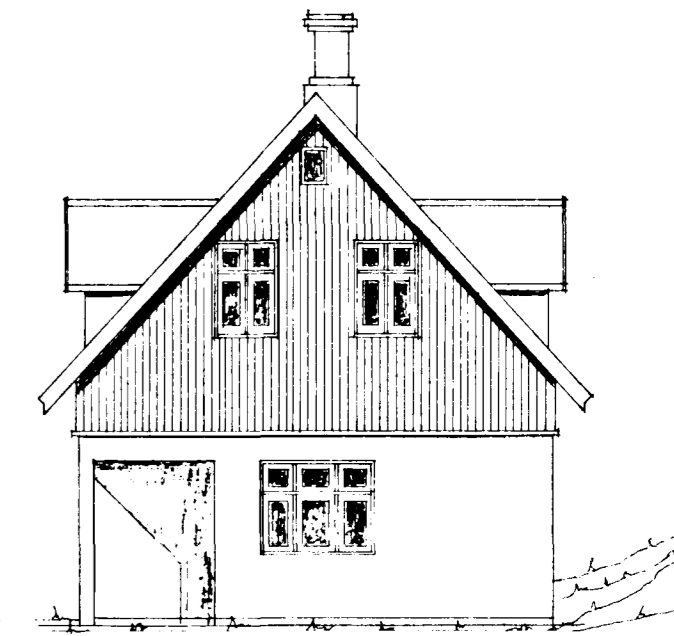
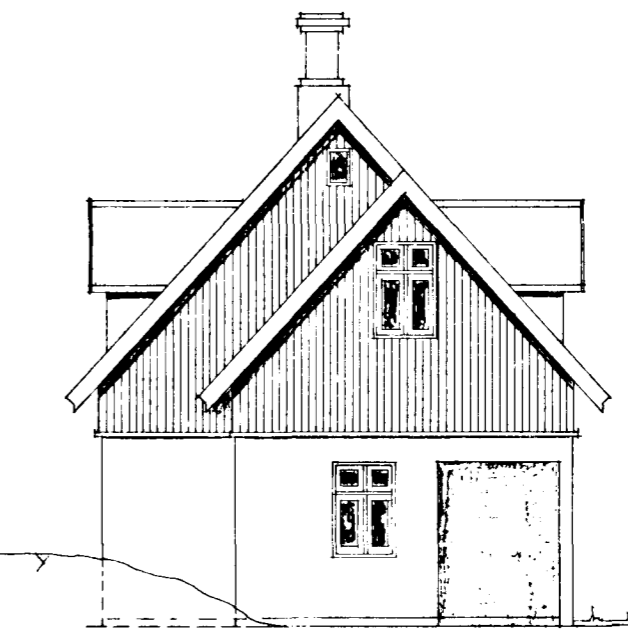
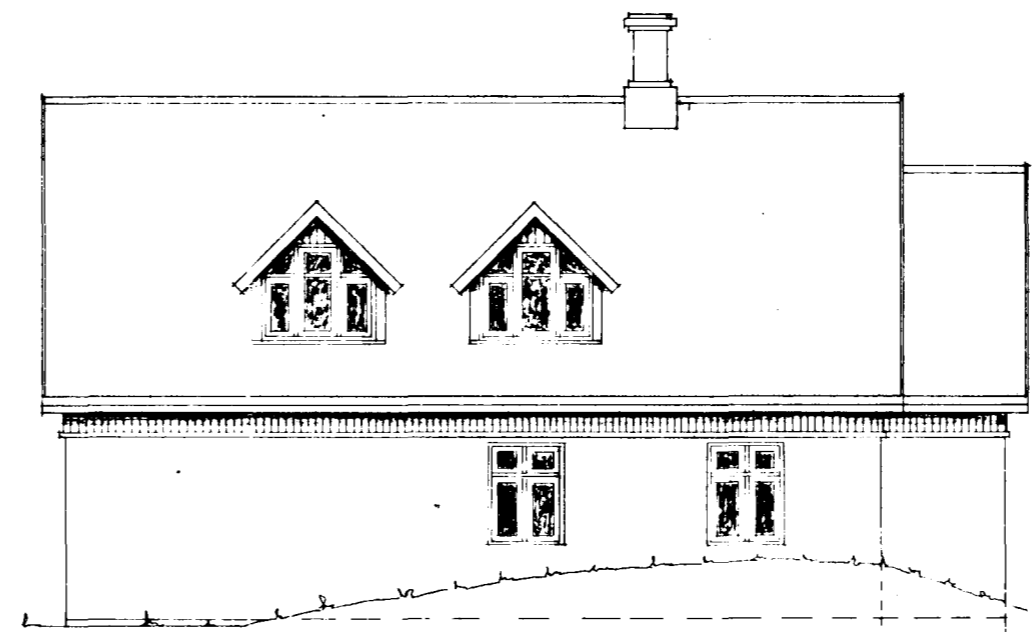
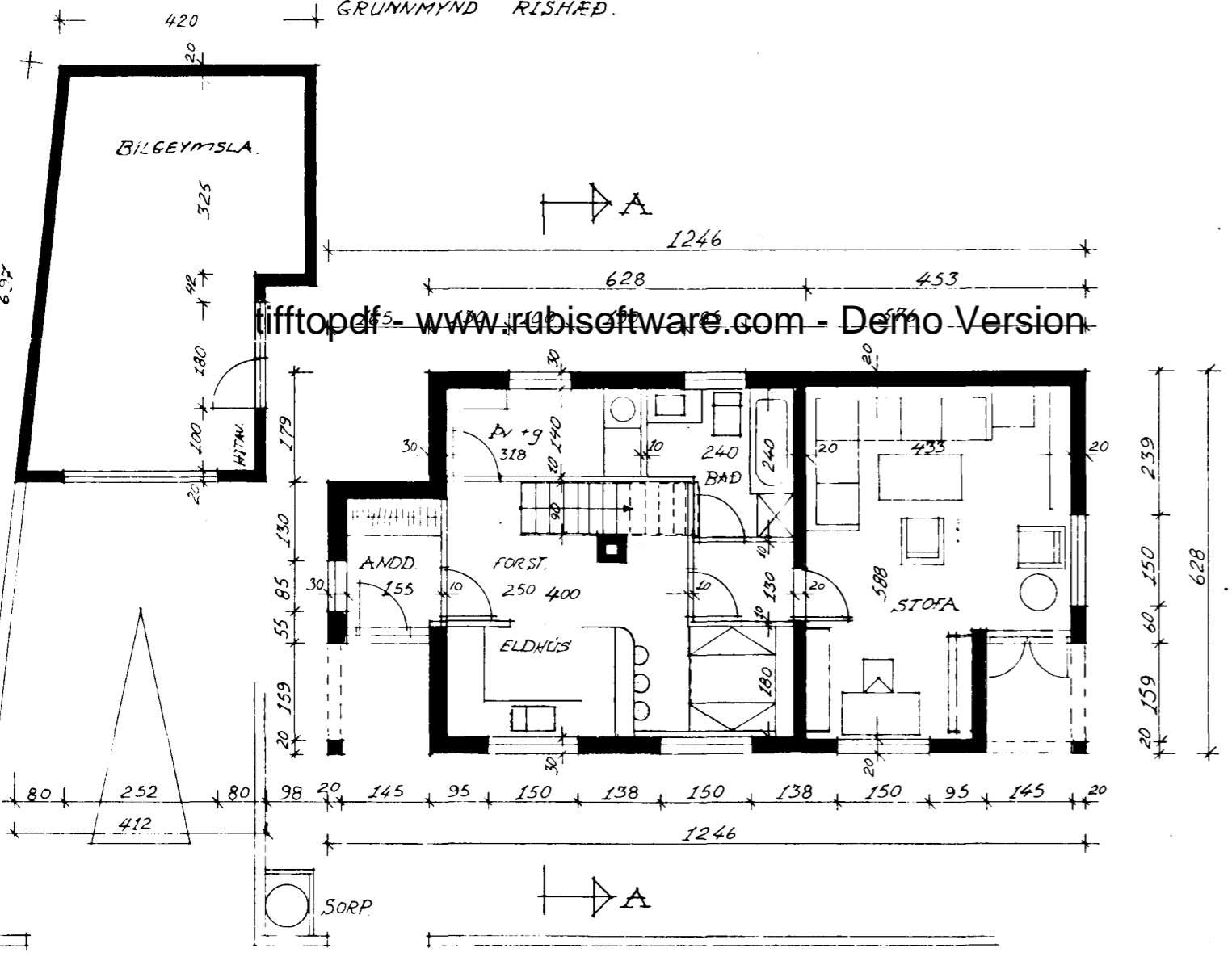
Samþykkt á fundi bygginga-
nefndar þ. 7/5 1980
BYGGINGAÞULLTRÚINN
I HAFNARFIRÐI
[Signature]



SUDUR

SNID A-A

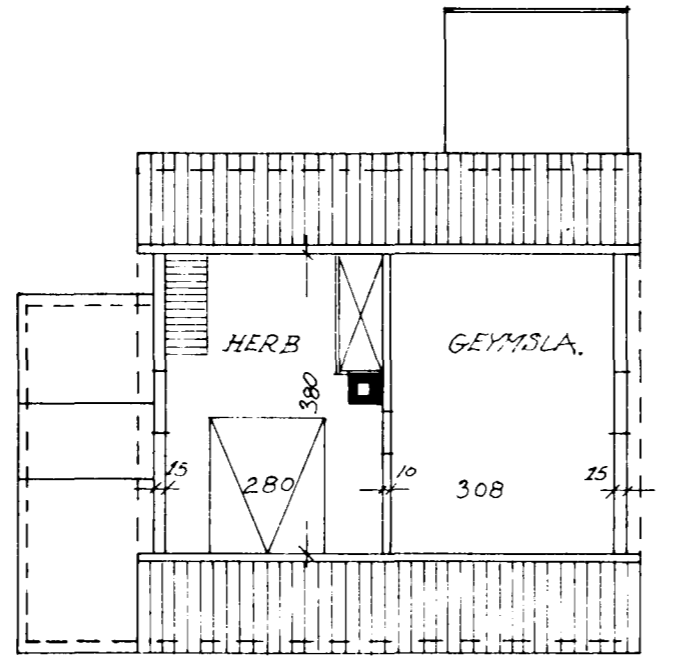
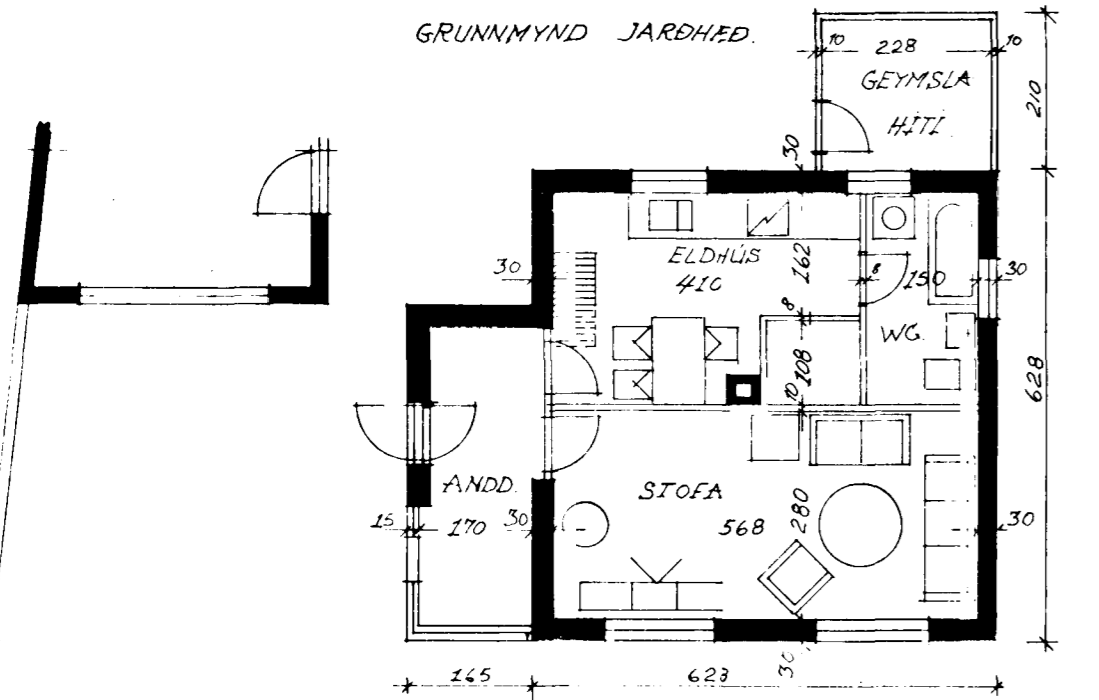
	BRUTTO	NETTO
NÚV. JARÐH.	46.8 m ²	27.1 m ²
EFTIR BR. JARÐH.	69.4 m ²	48.0 m ²
Resth.	75.3 m ²	62.8 m ²
	144.7 m ²	110.8 m ²



NORDUR

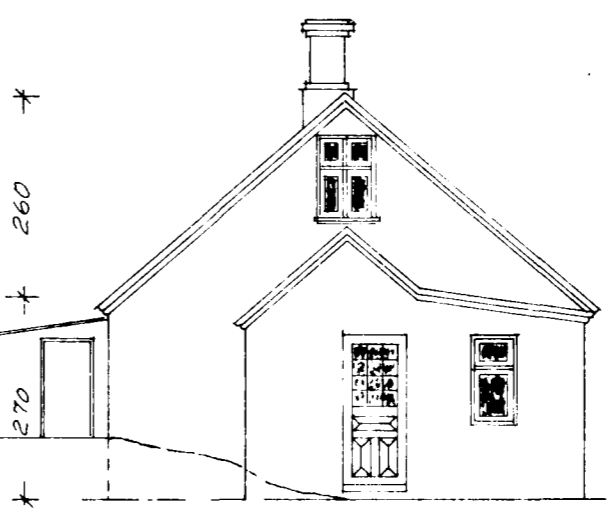
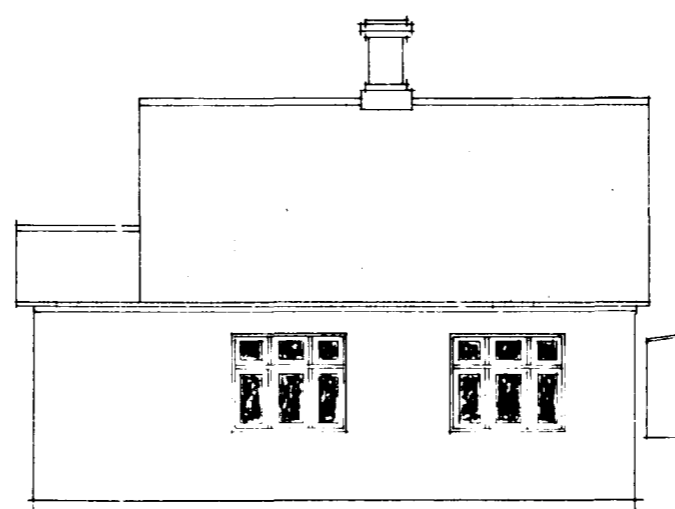
VESTUR

AUSTUR



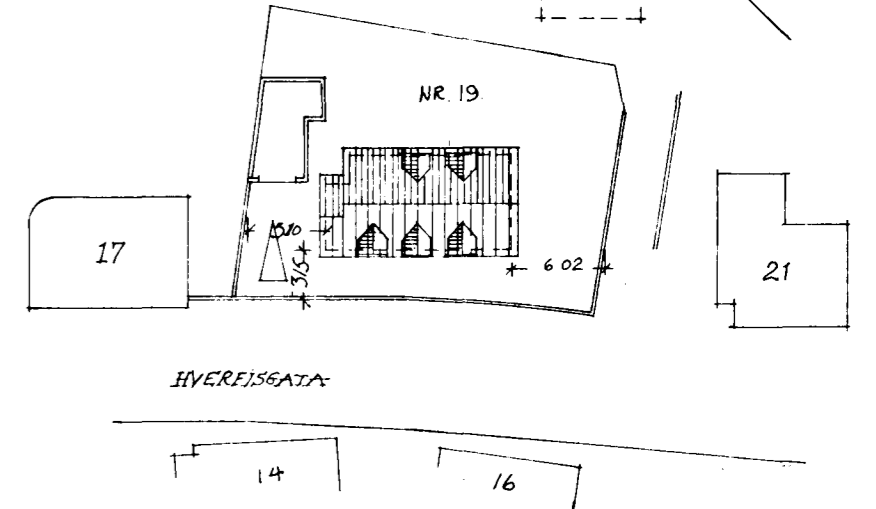
GRUNNMYND JARHED, NÚVERANDI

GRUNNMYND RISHED, NÚVERANDI



SUDUR, NÚV.

VESTUR, NÚV.



NÆSTODUMYND 1:500
Hverfisgata 19, Hafnarfjörður
Breyting. Teikn. Helgi K. Pálsson.
Málsvæði = 1:100
Hafnarfjörður 1. apríl 1980.
Yfirf. Spáur E. Einarsson