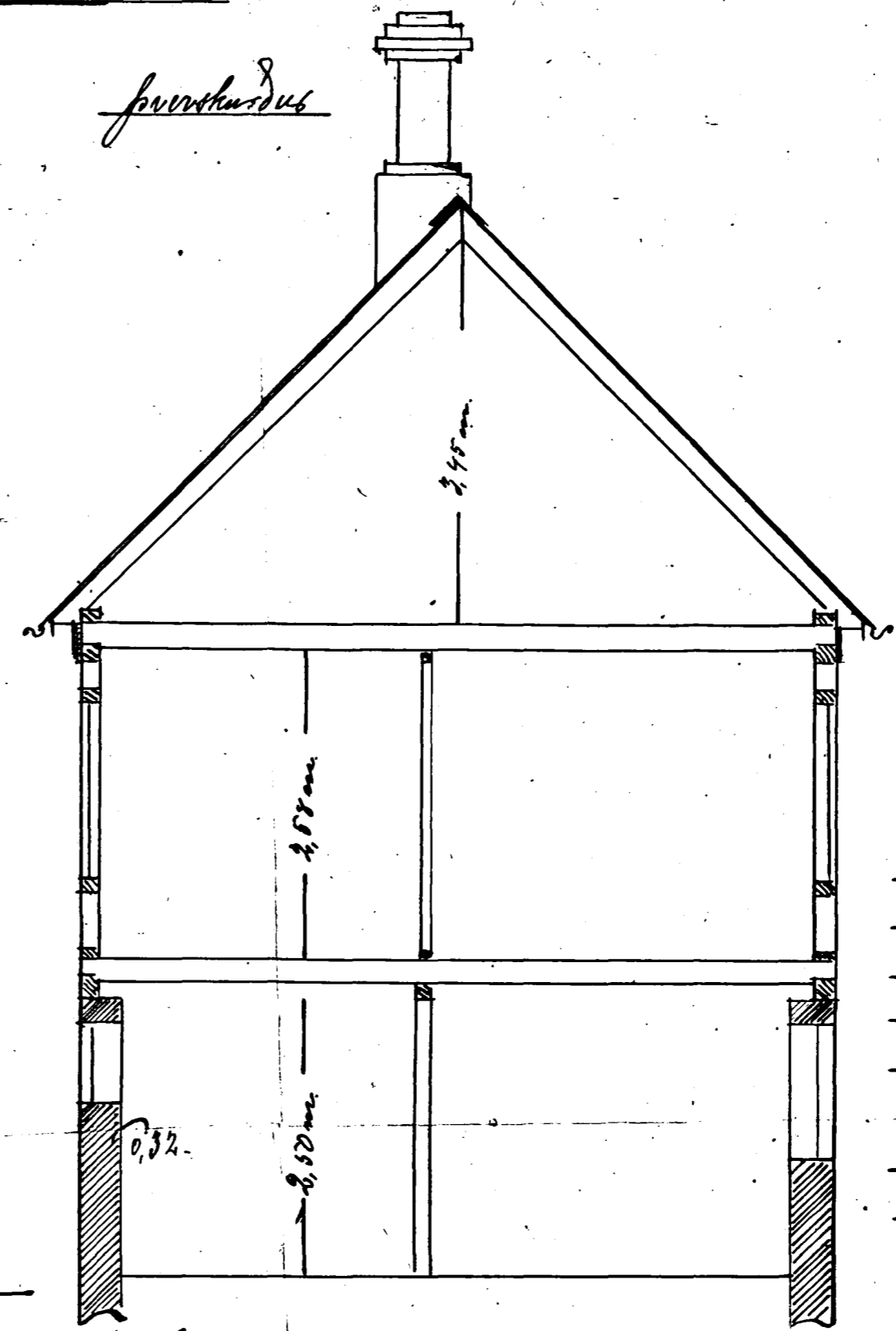
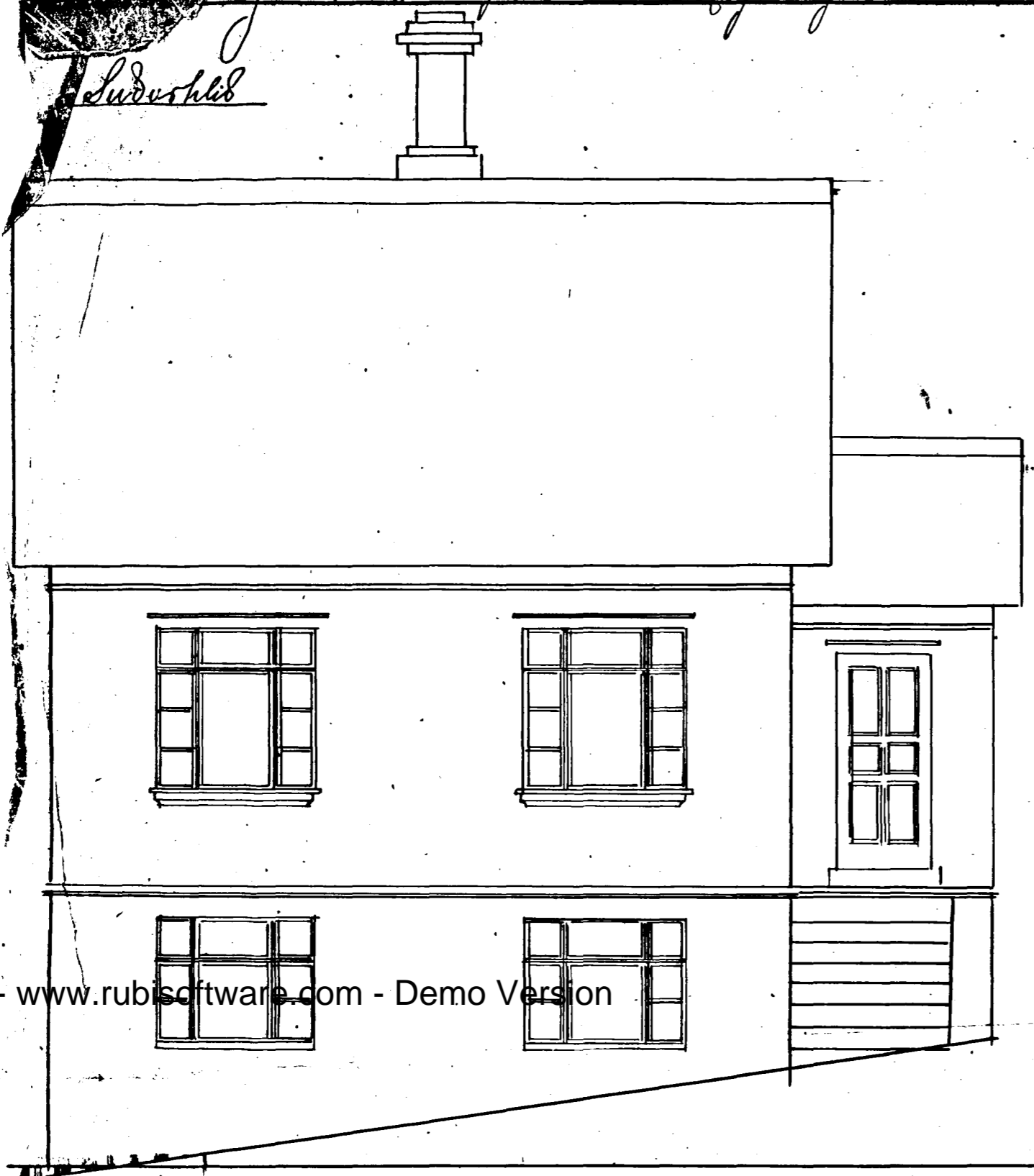
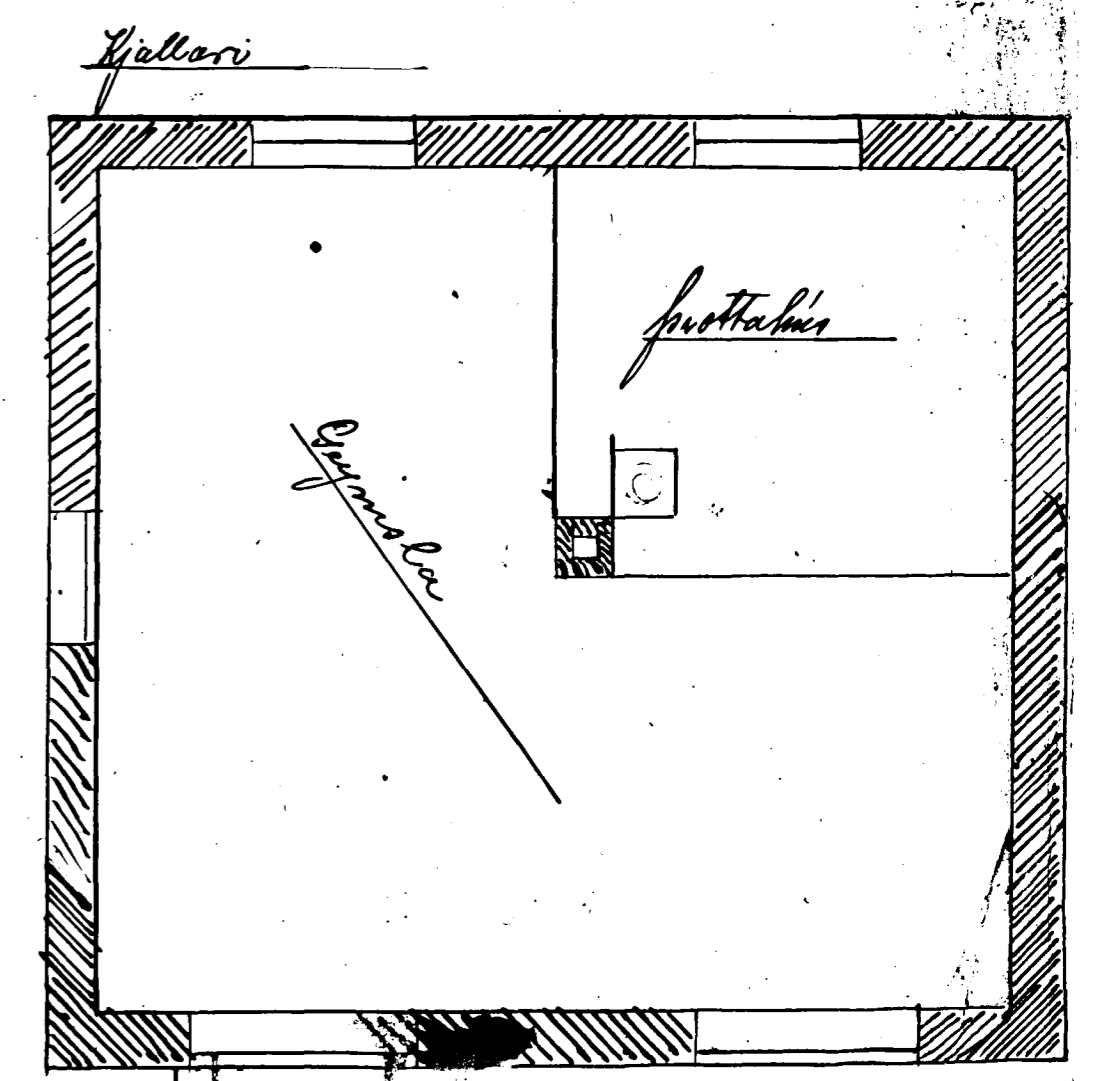
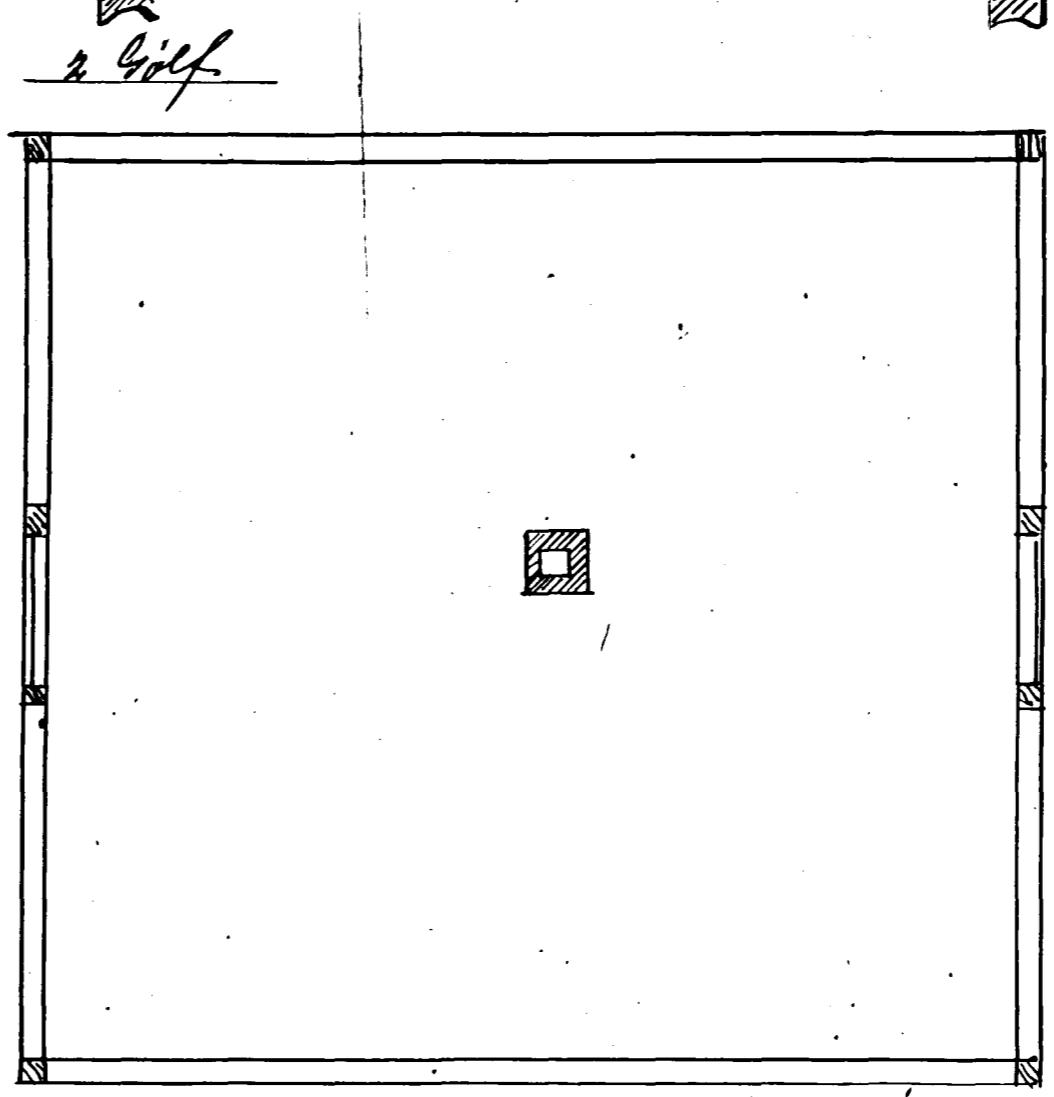
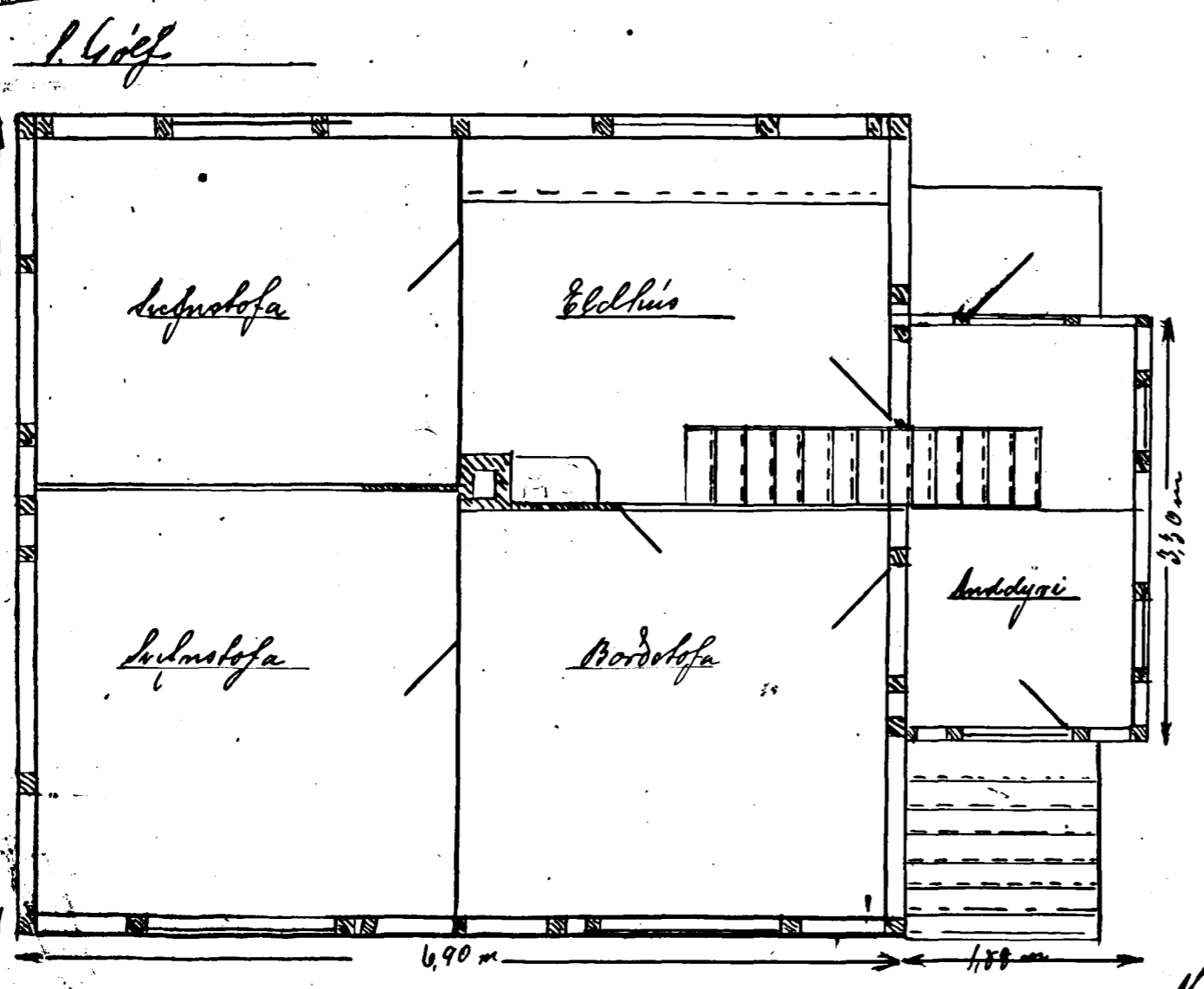


Jóns Eiríksdóttir Hafnarfjörður Hv. 42



Dúrothkas 5 1/2 tllur, stafir, skóður, spyrmas 4x4
 Staflojar 2 1/2 x 4, spyrmas 4x4, höf og loftlitas 5x6
 innmeg burðar ási í gallari stafir 5x1
 Klæðning utaná grindu 1" bórð, þú bitþoppi og
 hárnjárn yot. Innan grindu korni þlegð
 bórð, milli þyllja efi fyllt upp með stoppli, innan
 þyllja korni vaggfóður, (e. þoli þvott), betakki
 höf (ofra og neðra) í 1/4" bórð í 1. gólf innkotsþyllja
 Gallari skínklyftu blöndunaskilf all 1/4" bórð utan
 Gallagjöfletta innmeg alykklufur
 Trappur við anddyri og timbur

tifftopdf - www.rubiscsoftware.com - Demo Version



Hf. 20 júní 1919
 Antónínsson