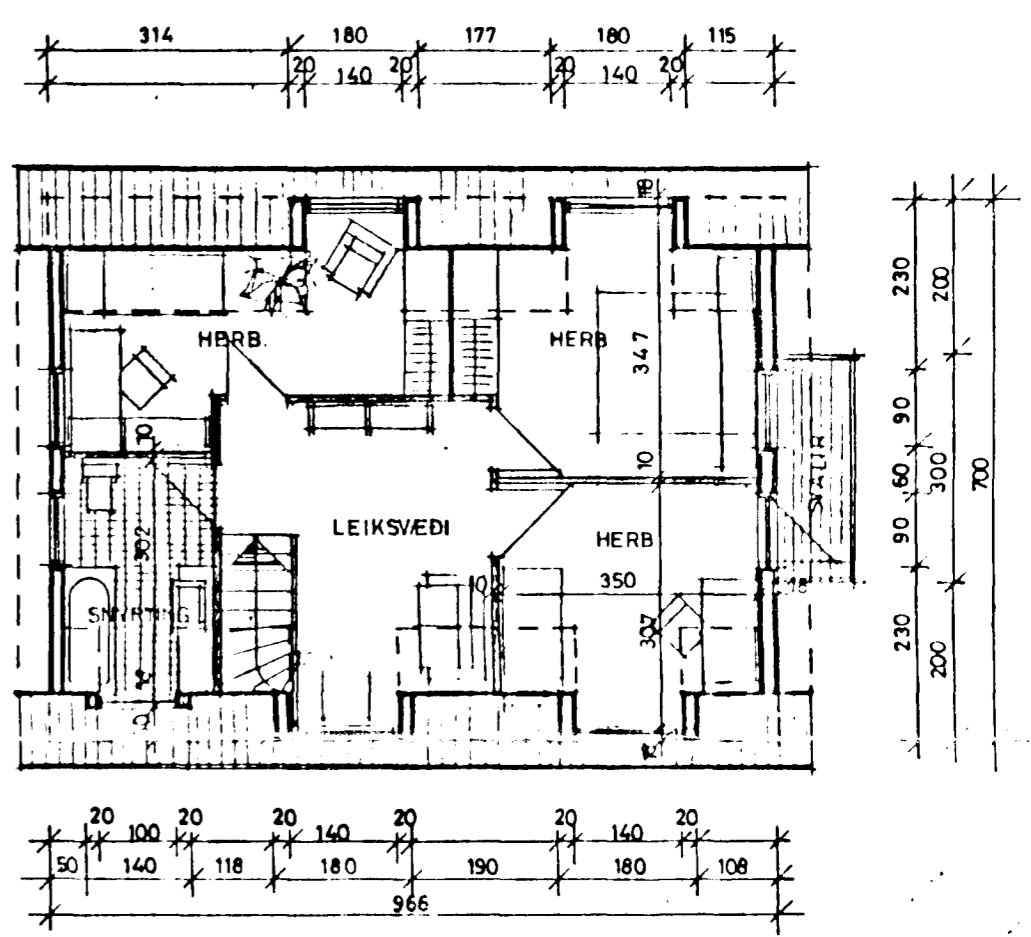
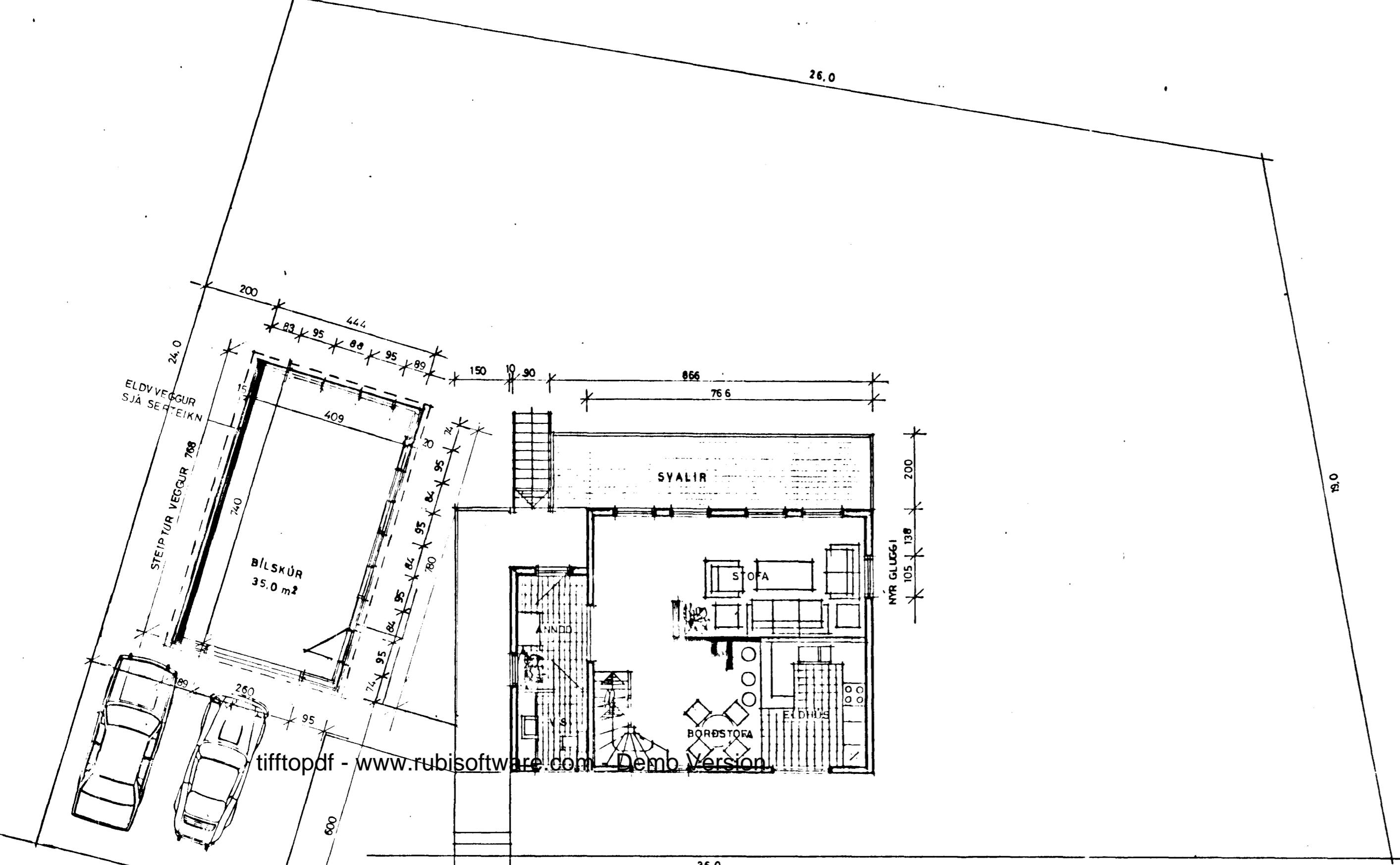


Samþykkt á fundi bygginga-
nefndar þ. 13. 1. 8. 1987
BYGGINGAFULLTRÚINN
Í HAFNARFIRDI

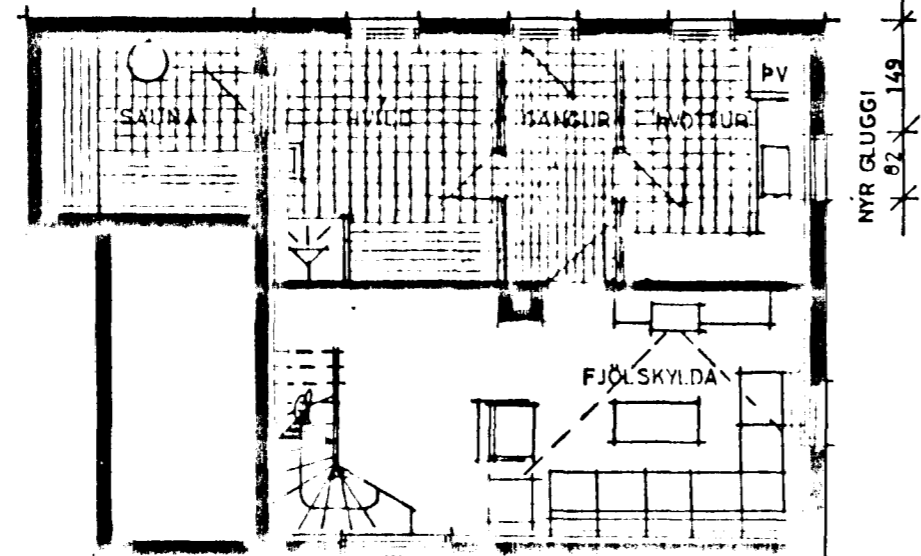
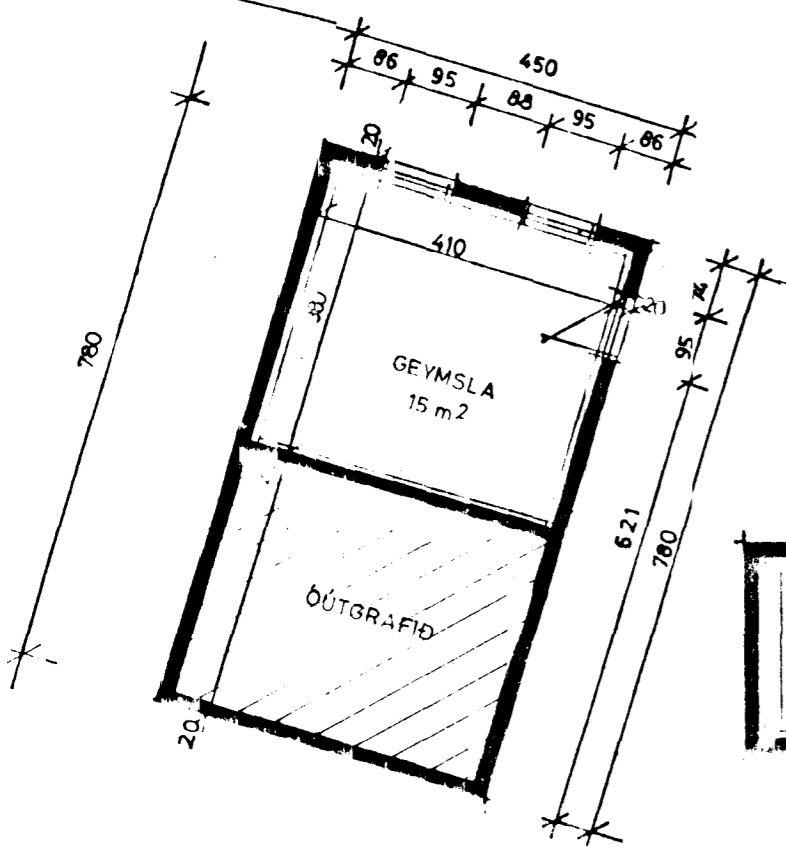
Einar Björnsson
Ástíðir: Gólfkot, vardi í
samræmi við hús.

STÆRÐIR:

BÍLSKÚR	35 m ² + 15. 189 m ²	143 m ³
HÆÐ	64,5	
KJALLARI	62 "	
RIS	58 "	
SAMT.	211 m ²	229 m ²
LÖÐ	644 "	233,4 m ²
NÝTINGARHLUTFALL	0,32	

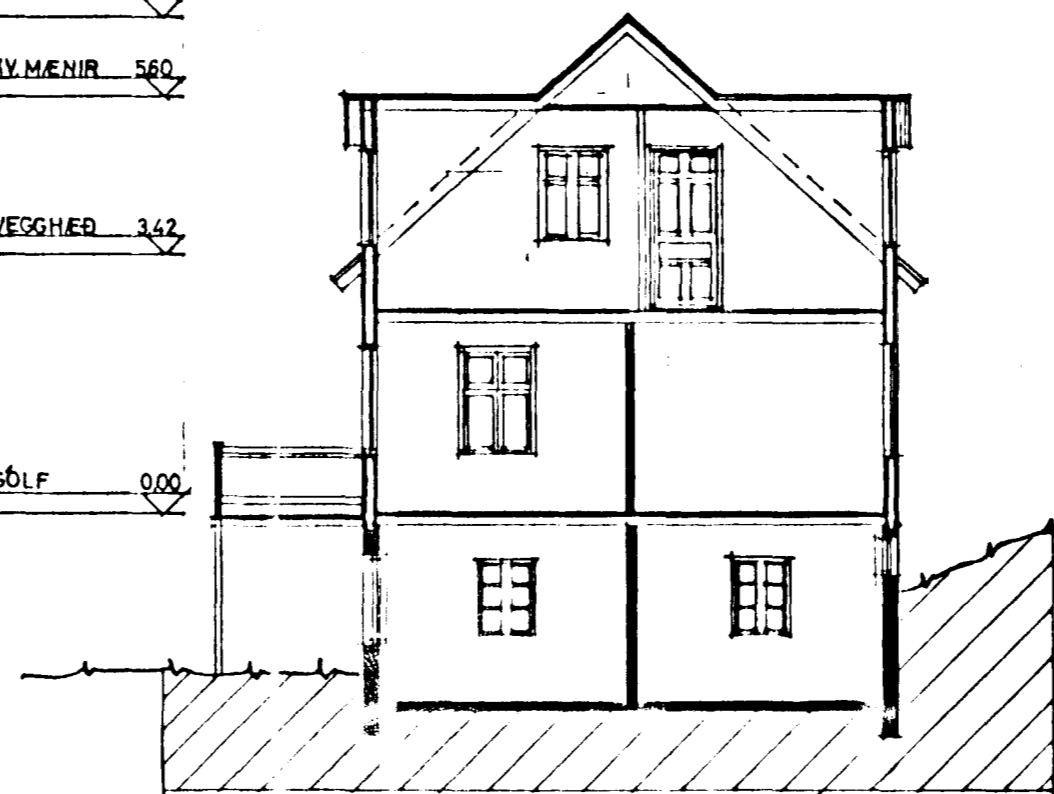


GRUNNMYND RISHÆÐAR 1:100

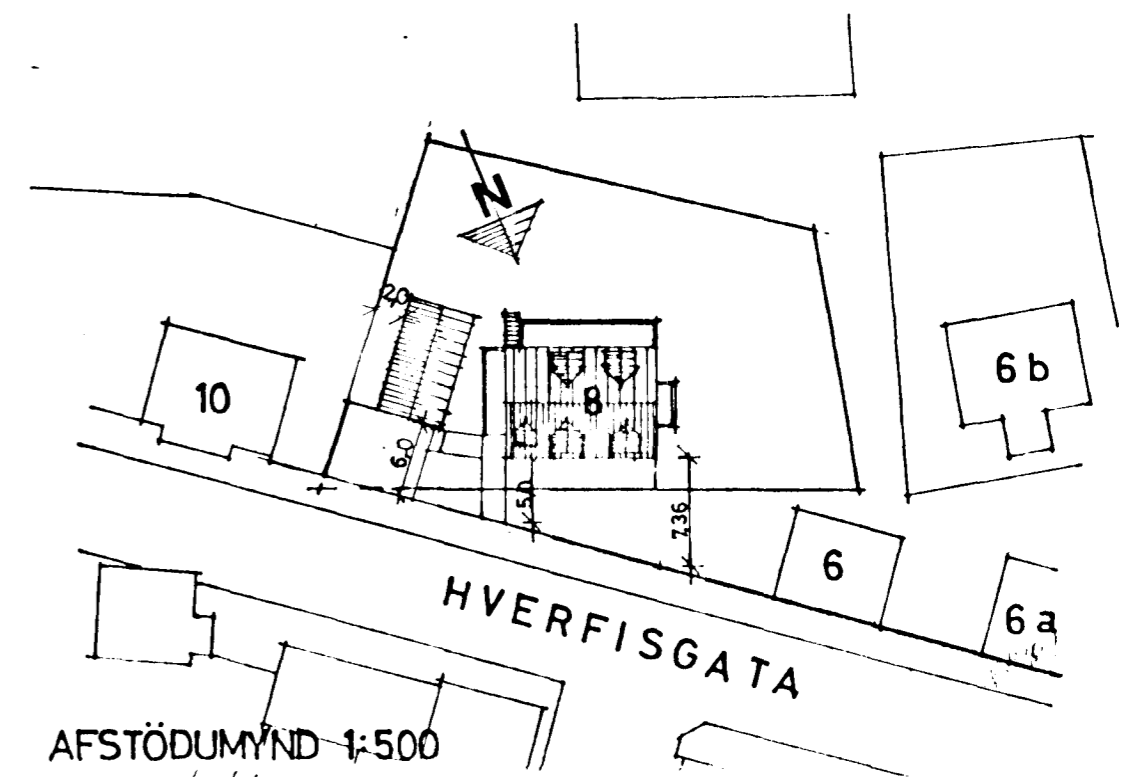


GRUNNMYND KJALLARA 1:100

MENIR	6,60
KV. MENIR	5,60
VEGGHÆÐ	3,42
GÓLF	0,00



SNÍÐ 1:100



AFSTÖÐUMYND 1:500
BREYTTI JÚLÍ

TEIKNISTOFAN HRINGBRAUT 56, 220 HAFNARFIRDI, S 54355
PALL V. BJARNASON, ARKITEKT, FAI

HVERFISGATA 8. HAFNARFIRDI - BÍLSKÚR, NÝTT RIS
GRUNNMYNDIR - SNÍÐ - AFSTÖÐUMYND

137.02	
DAGS	OKT 1982
KVARDI	1:500 1:500
HANNAÐ	P.V.B.
TEIKNAR	A.E.
YFER	P.V.B.