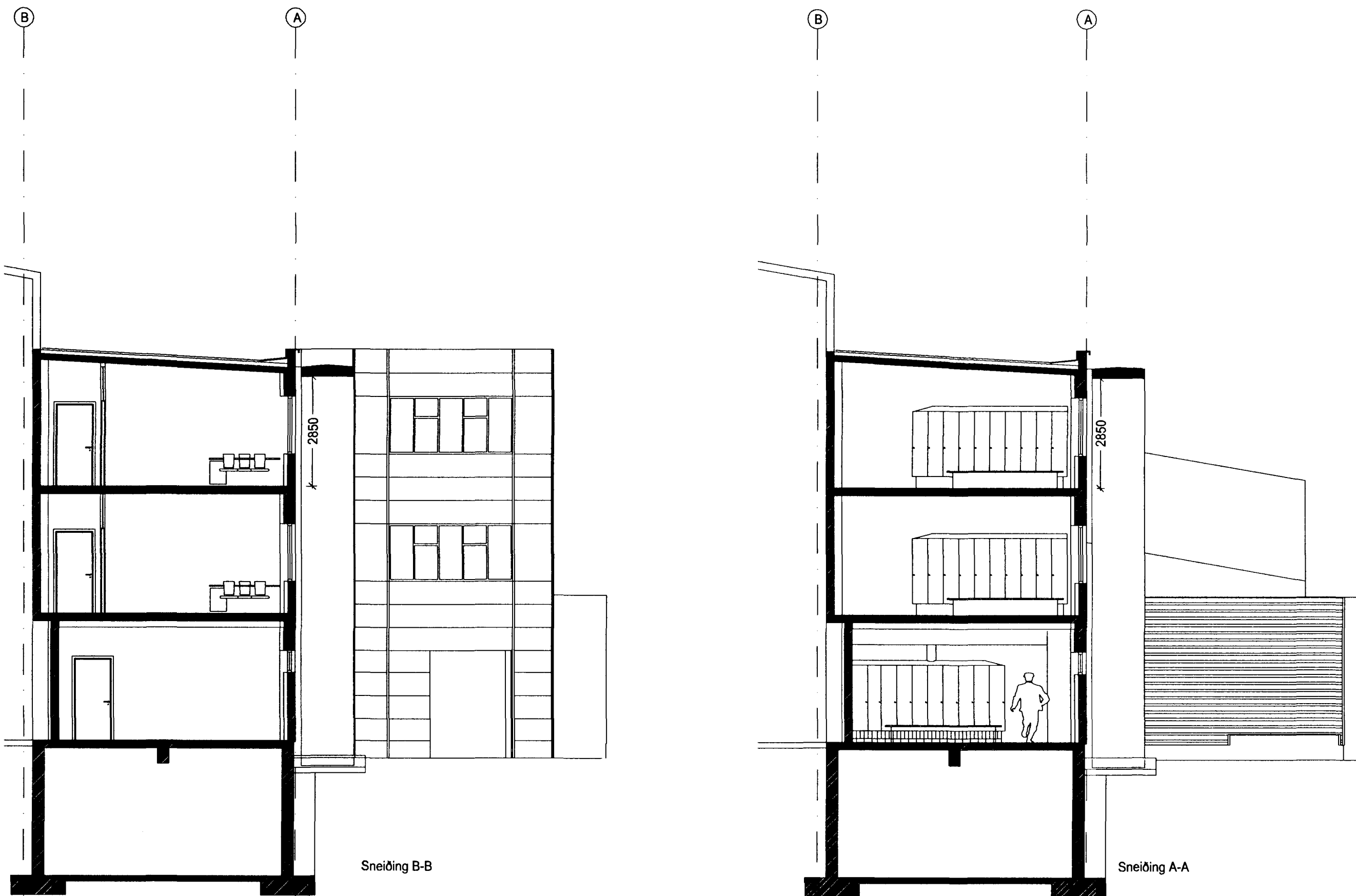




Nýbygging nr. 1

Nýbygging nr. 2



Sneiðing B-B

Sneiðing A-A



Skýringar:  
Explanations:

**ARK ÍS ehf**  
arkitektar ráðgjafar  
Aðalsteinn Snorrason arkitekt fái 161161-2769  
Egill Guðmundsson arkitekt fái 270152-6869  
Gisti Gíslason arkitekt fái 160657-4809  
Klapparstíg 16 101 Reykjavík  
sími 511 2060  
fax 511 2066  
netfang arkis@ark.is

Breyt. / Rev.	Dags. / Date	Gerf. / Made by	Samþykkt / Approved
A	10.09.01	MS	
Skráning matshluta			

Tilvitnir / Ref. no. of ISAL

This drawing is the property of the ICELANDIC ALUMINIUM CO. LTD. and handed out for personal use only. It may neither be copied nor made available to others without permission of the ICELANDIC ALUMINIUM CO. LTD. The receiver is liable for any misuse.

Fjöldi stúkkja / Number of pieces	Hlutf. / Object	Atríð / Item	Efni / Material	Eq. st. / Total weight (kg)	Í heild / Total pieces	Athugasemdir / Remarks
IV III II I	Steypuskáli					Málkvarði 1: 100
	ANNEX styrkingar / stökkun					Stærð þrumtekin. / Format of org. A1
	Ásýnd nýbygg. við eldri bygg. / Sneiðingar					CCno - Eq type - Eq. no. 6010 BA 1227
Verktali / Supplier				ARKIS ehf		
				(99)2.05		
Teknað / Drawn	AS MS 15.06.01	Yfirfarið / Checked	AS	Samþykkt / Approved	AS	
algroup alusulsse primary materials				Icelandic aluminium co. ltd. p.o. box 244 10-222 hafnarfordur, Iceland		
				166605		
				20.09.01		