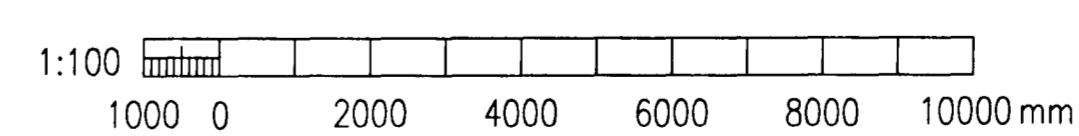
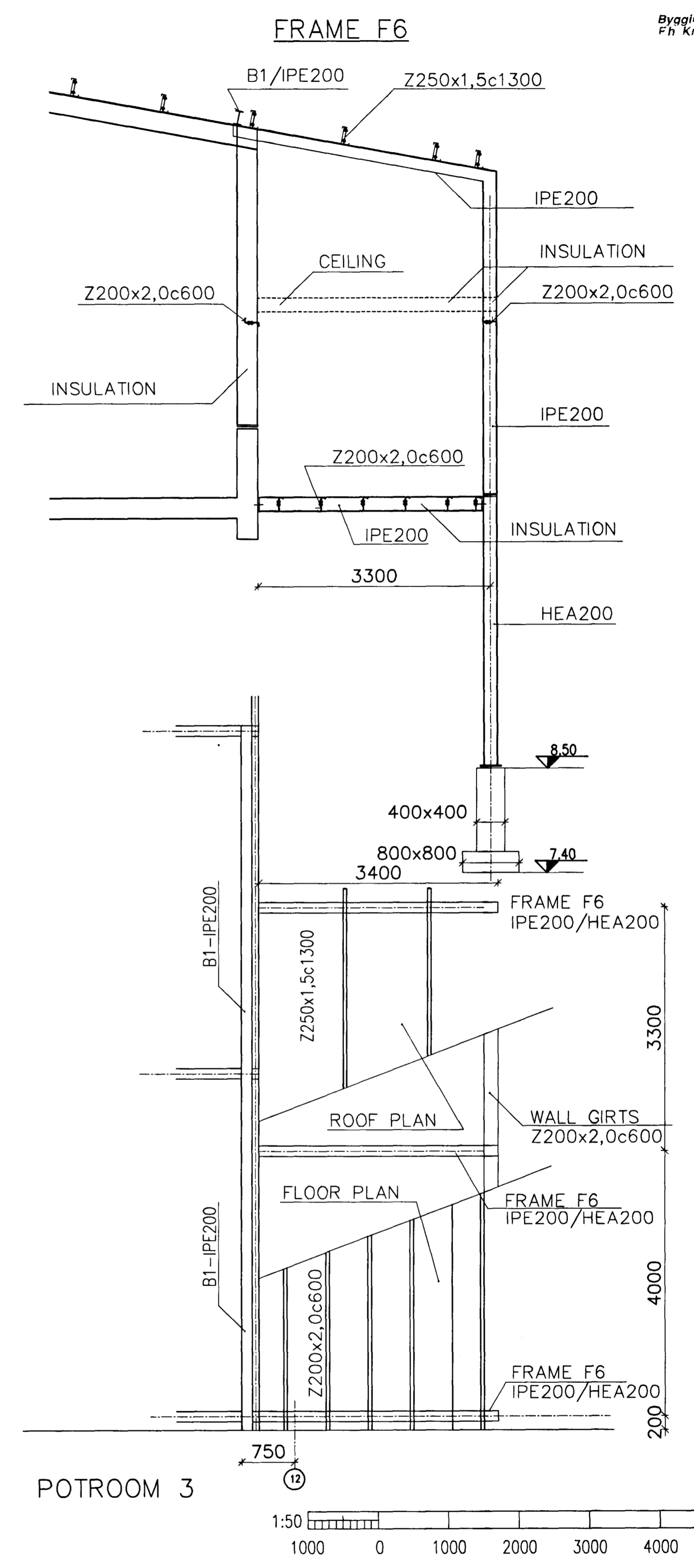
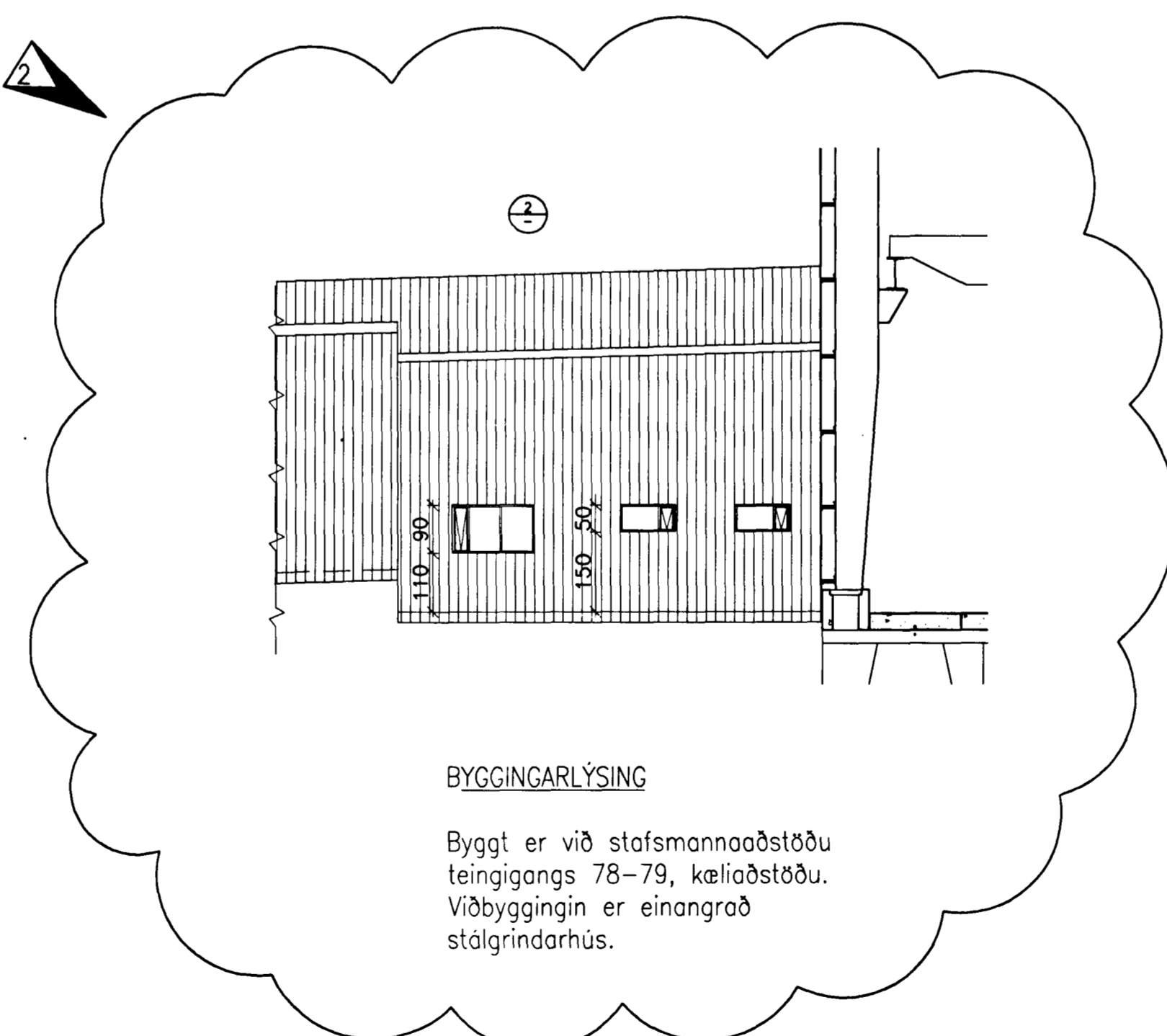
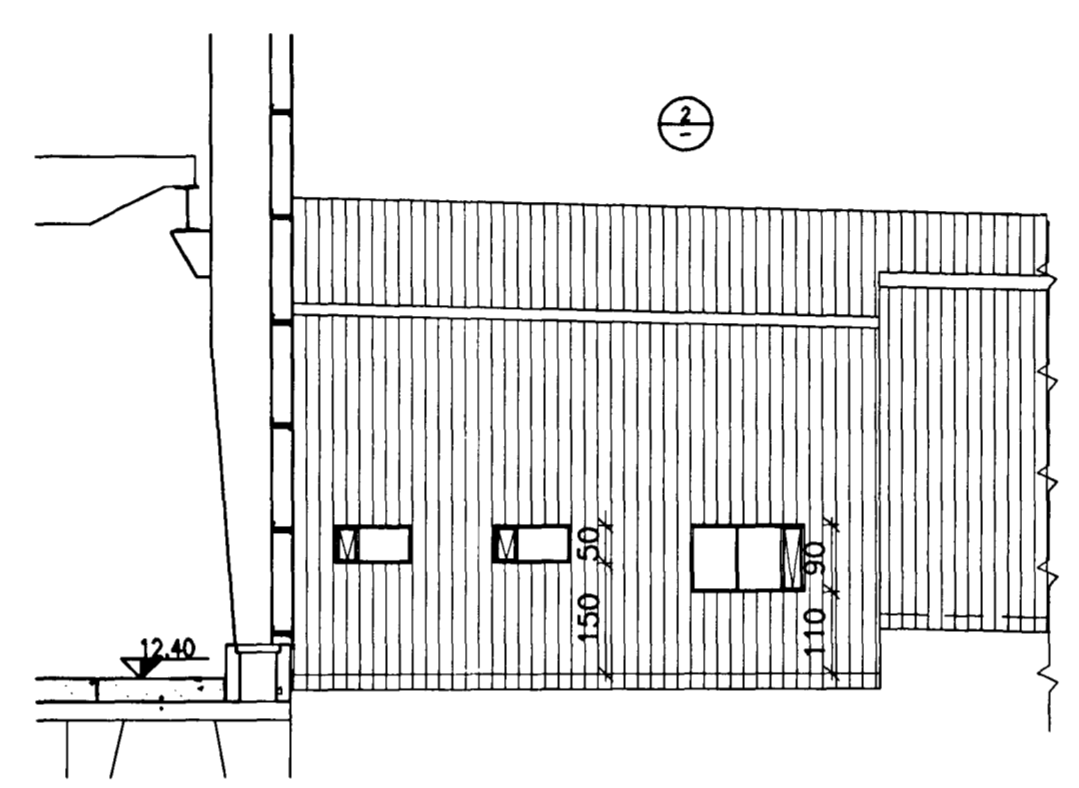
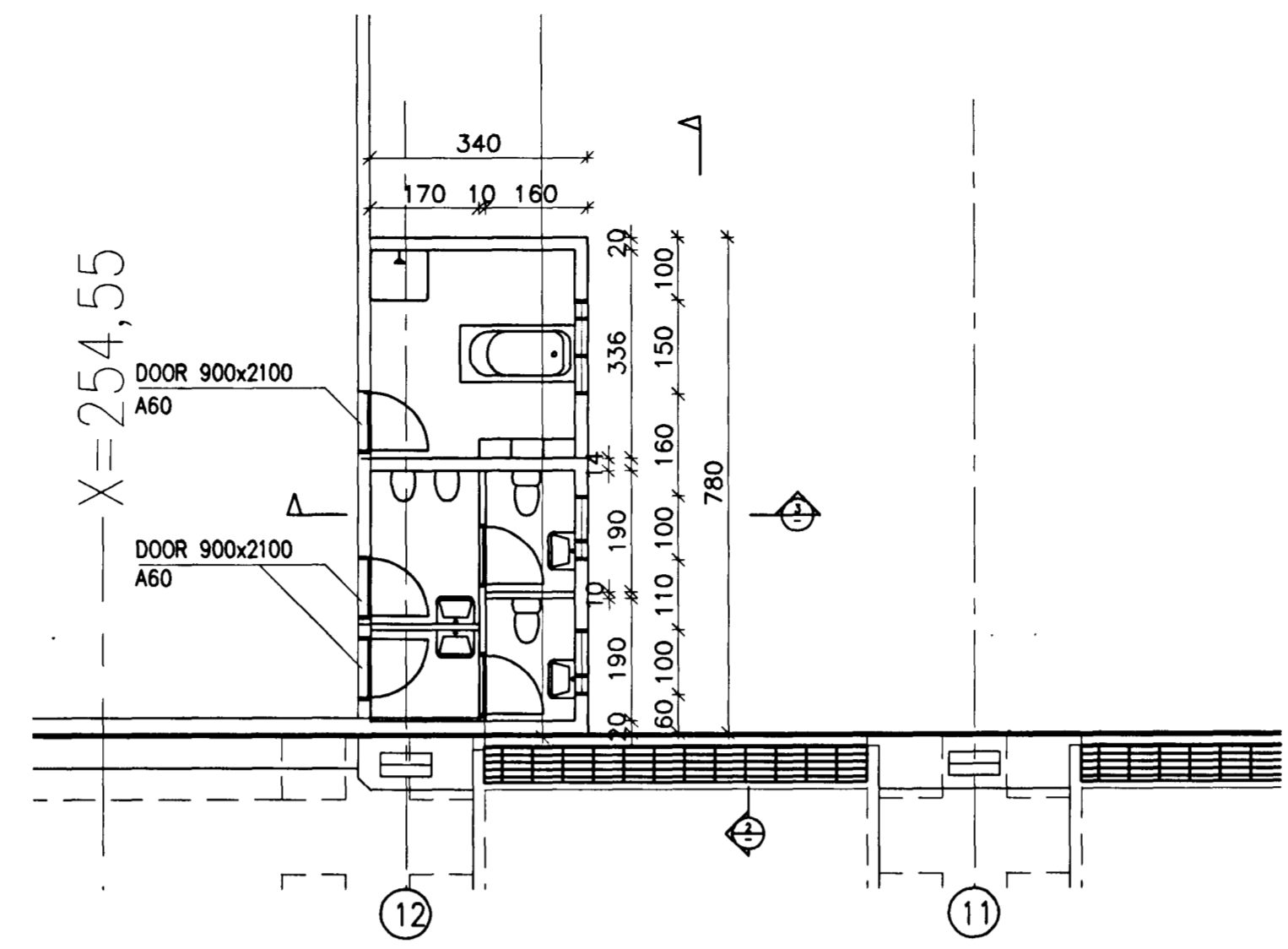
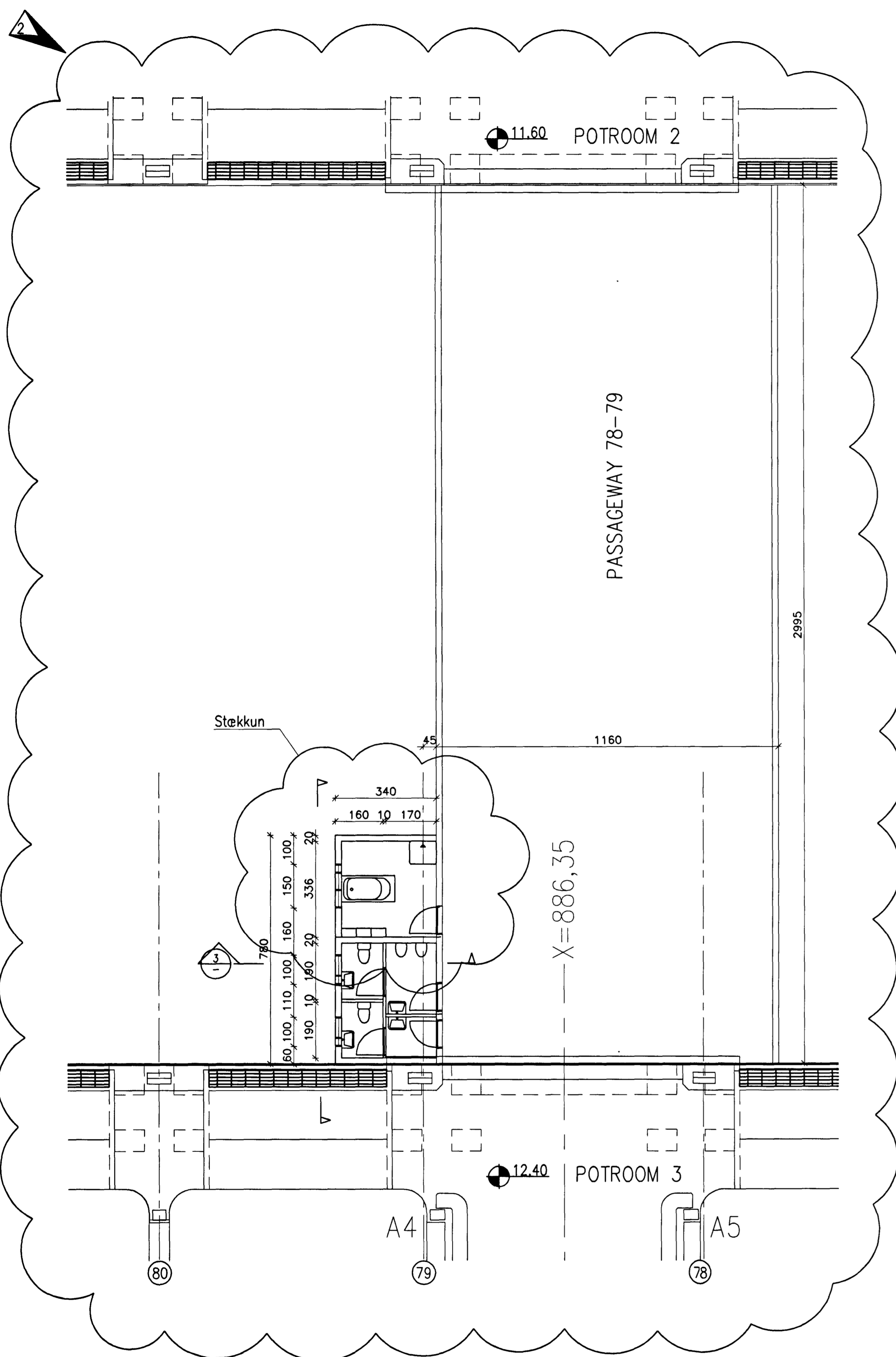


KP



Nich Indurson 181144-5845

VST VST CONSULTING ENGINEERS Ltd. Arnúlla 4 108 Reykjavík Iceland Tel: +354 569 5000 Fax: +354 569 5010		95.120 - 28.159	
ICELANDIC ALUMINIUM COMPANY LTD.		DRAWN 96.07.14 SGI APPROVED 96.07.14 NI PROCESS 96.07.14 NI PROJECT 96.07.14 NI SCALE 1:50 FORMAT A1	PASSAGEWAY BUILDINGS STRUCTURAL STEEL SANITARY FACILITIES, FRAME F6
ALUSUISSE ENGINEERING LTD. ZÜRICH SWITZERLAND		79000-35259	2
ICELANDIC ALUMINIUM CO. LTD		188.259	

REV. NO.	DATE	REVISION	BY	APP.	REV. NO.	DATE	REVISION	BY	APP.	NOTES	REFERENCE DRAWING	DRAWING NUMBER
2	200-11.26	KÆLIÁÐSTADA I TENGIBYGG. 78-79, MATSH. 57	NI	Á/Í								
1	1996.08.22	APPROVED FOR CONSTRUCTION	NI									

This drawing is our property and given for personal use only. It may not be copied or made available to others without our permission. The receiver is responsible for any misuse.

