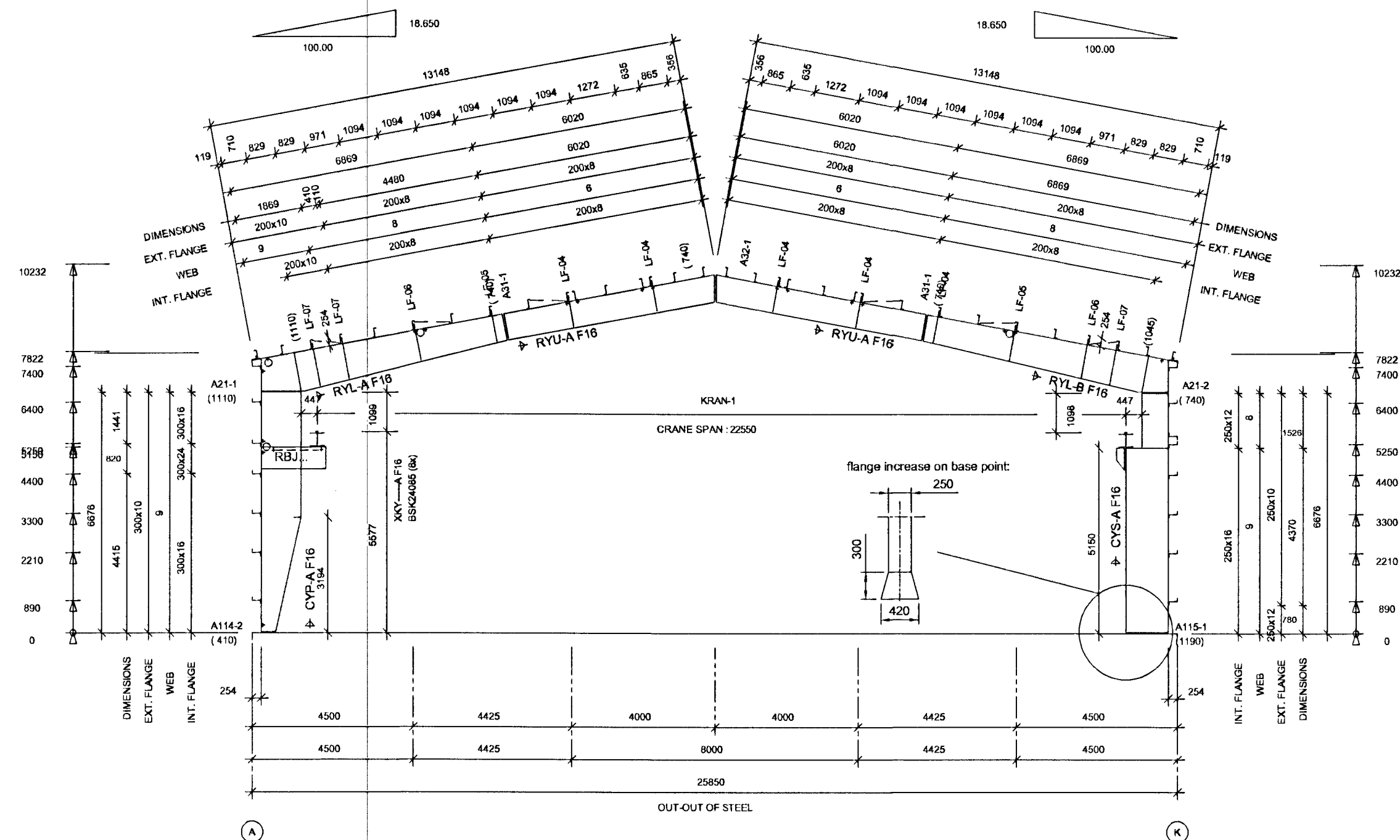


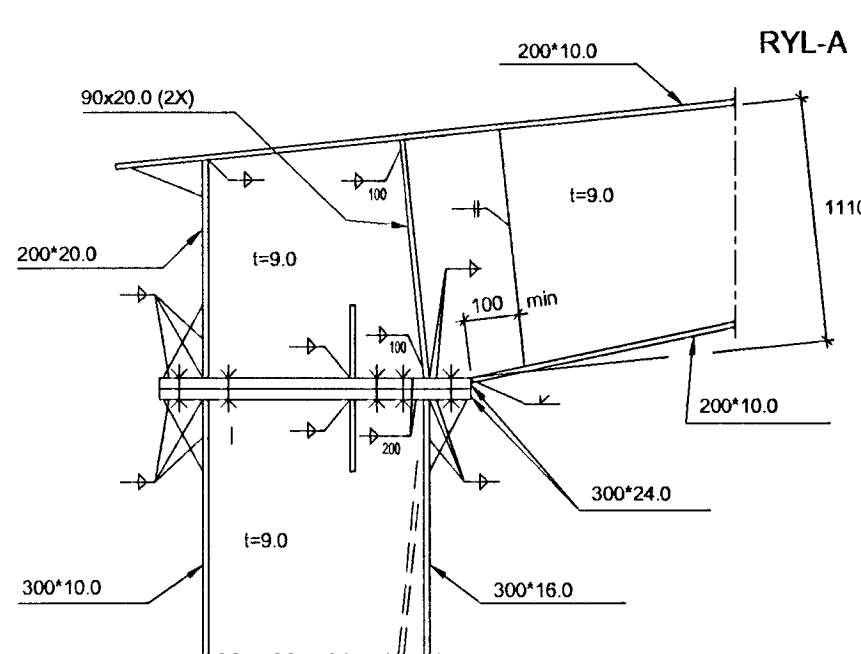
CONNECTION	BOLT	QTY
A21-1	BSK2408	2,2-4,2
A21-2	BSK2408	2,2-4,2
A31-1	BSK2007	2,2-2,2
A31-2	BSK2007	2,2-2,2
A32-1	BSK2007	2,2-2,2
A32-2	BSK2007	2,2-2,2

**MOS2 OIL
SREWS 100 % PRESET**
PV = 450 Nm M20 10.9
PV = 800 Nm M24 10.9



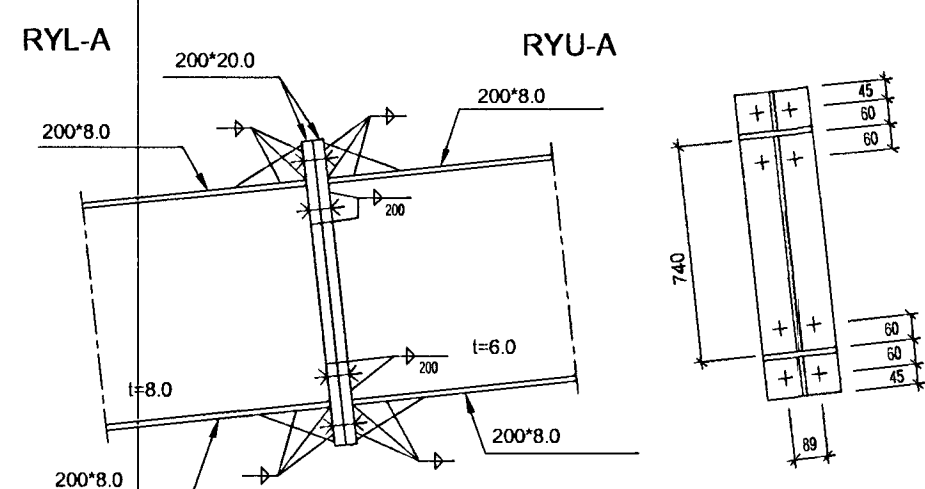
AXIS : 1
(SCALE: 1/125)

FRAME AXIS : 1
CONNECTION TYPE : A21-1



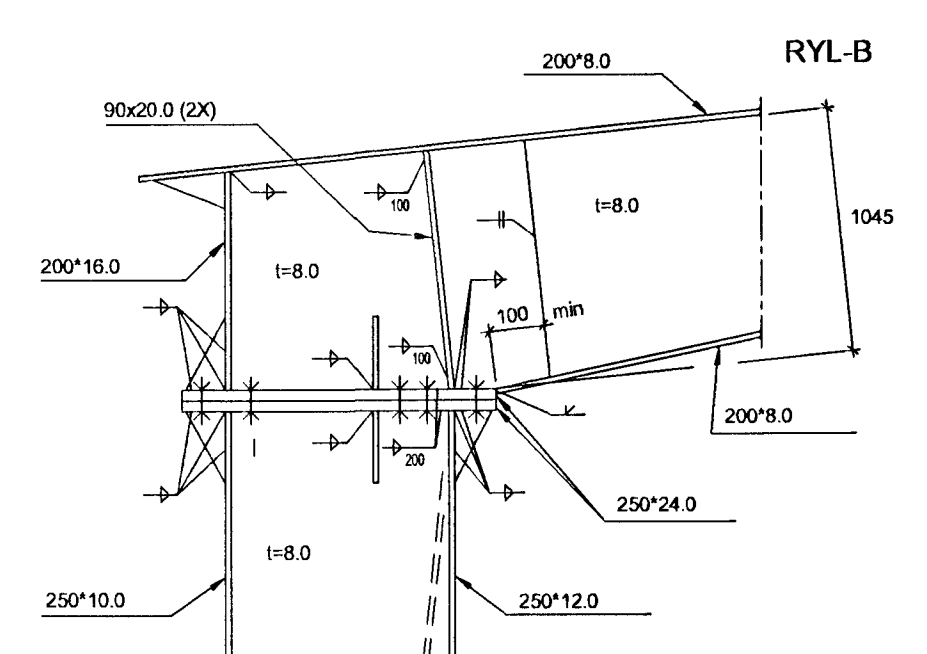
A21-1: BOLTS M24, Quality 10.9
 All welds : a=4.5mm
 All stiffeners triangle 200°90°9, Unless noted different
 Steel quality S355, Unless noted different
 All welds single, Unless noted different

FRAME AXIS : 1
CONNECTION TYPE : A31-1



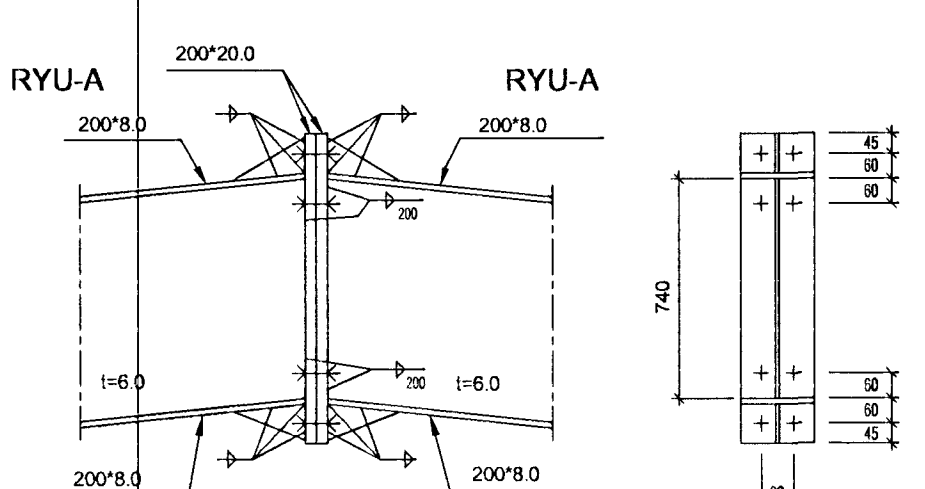
A31-1: BOLTS M20, Quality 10.9
 All welds : a=4.5mm
 All stiffeners triangle 200°90°9, Unless noted different
 Steel quality S355, Unless noted different
 All welds single, Unless noted different

FRAME AXIS : 1
CONNECTION TYPE : A21-2



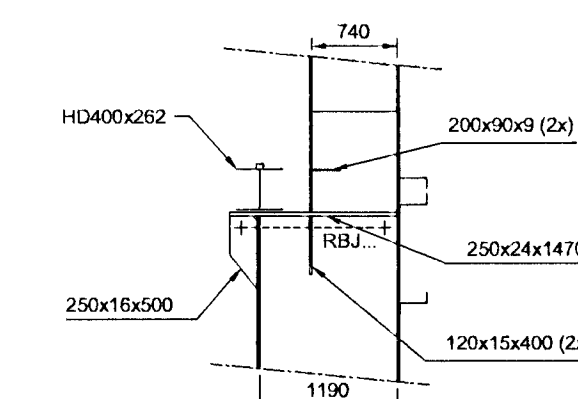
A21-2: BOLTS M24, Quality 10.9
 All welds : a=4.5mm
 All stiffeners triangle 200°90°9, Unless noted different
 Steel quality S355, Unless noted different
 All welds single, Unless noted different

FRAME AXIS : 1
CONNECTION TYPE : A32-1

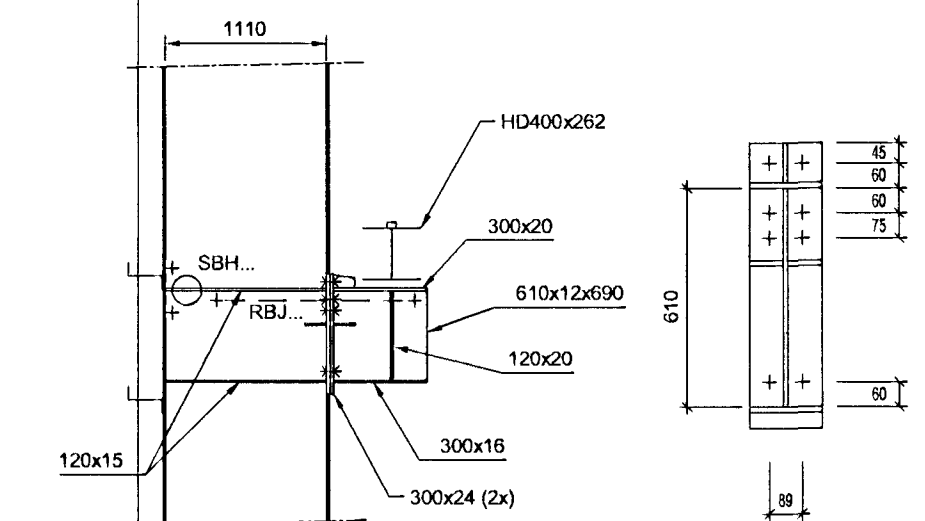


A32-1: BOLTS M20, Quality 10.9
 All welds : a=4.5mm
 All stiffeners triangle 200°90°9, Unless noted different
 Steel quality S355, Unless noted different
 All welds single, Unless noted different

FRAME AXIS : 1-9/K
CONNECTION TYPE : crane on sleep up column

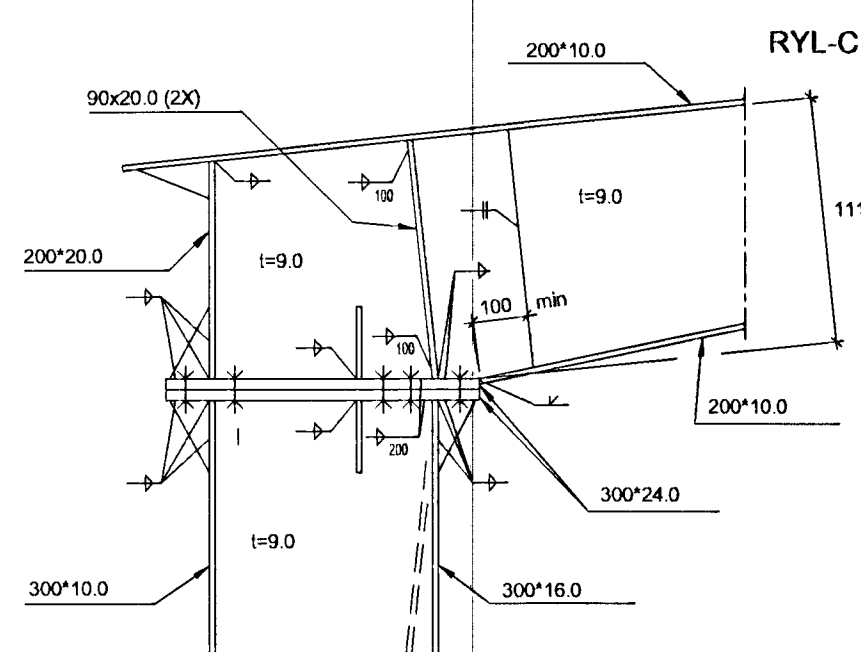


FRAME AXIS : 1-9/A
CONNECTION TYPE : XCY on main frame



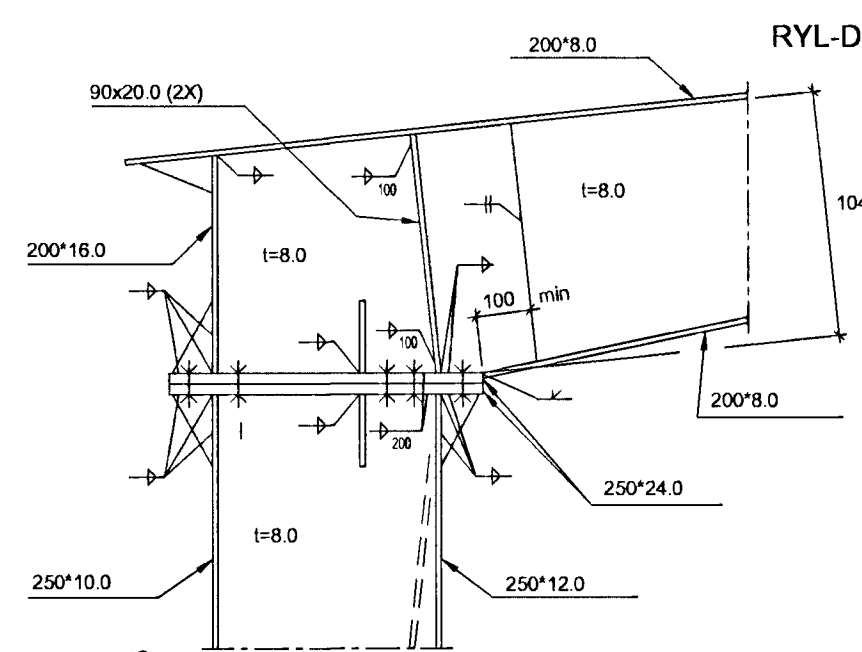
A32-1: BOLTS M24, Quality 10.9
 All welds : a=4.5mm
 All stiffeners triangle 200°90°9, Unless noted different
 Steel quality S355, Unless noted different
 All welds single, Unless noted different

FRAME AXIS : 2
CONNECTION TYPE : A21-1



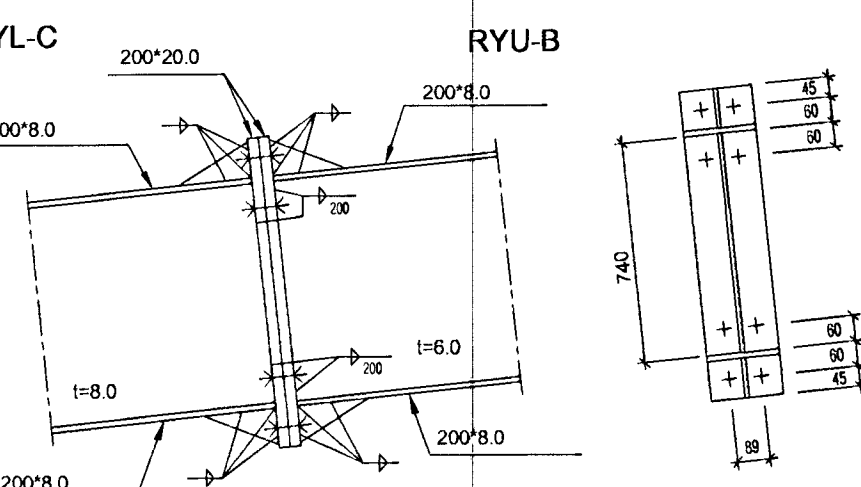
A21-1: BOLTS M24, Quality 10.9
 All welds : a=4.5mm
 All stiffeners triangle 200°90°9, Unless noted different
 Steel quality S355, Unless noted different
 All welds single, Unless noted different

FRAME AXIS : 2
CONNECTION TYPE : A21-2



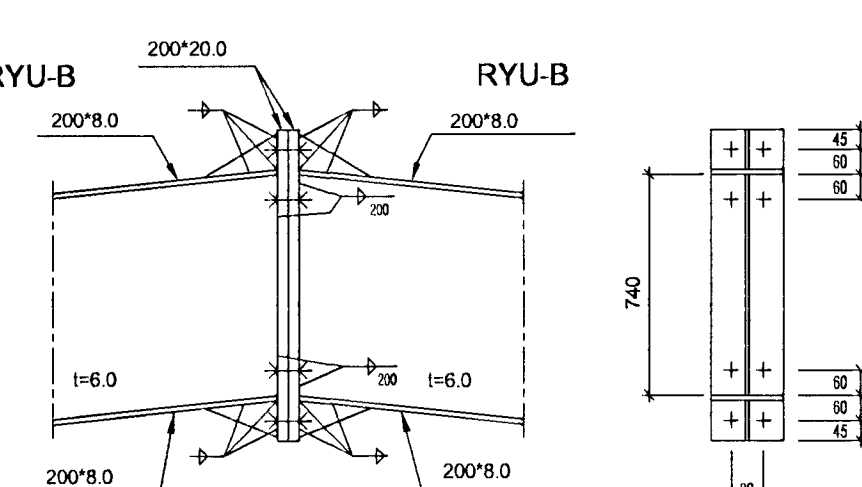
A21-2: BOLTS M24, Quality 10.9
 All welds : a=4.5mm
 All stiffeners triangle 200°90°9, Unless noted different
 Steel quality S355, Unless noted different
 All welds single, Unless noted different

FRAME AXIS : 2
CONNECTION TYPE : A31-1



A31-1: BOLTS M20, Quality 10.9
 All welds : a=4.5mm
 All stiffeners triangle 200°90°9, Unless noted different
 Steel quality S355, Unless noted different
 All welds single, Unless noted different

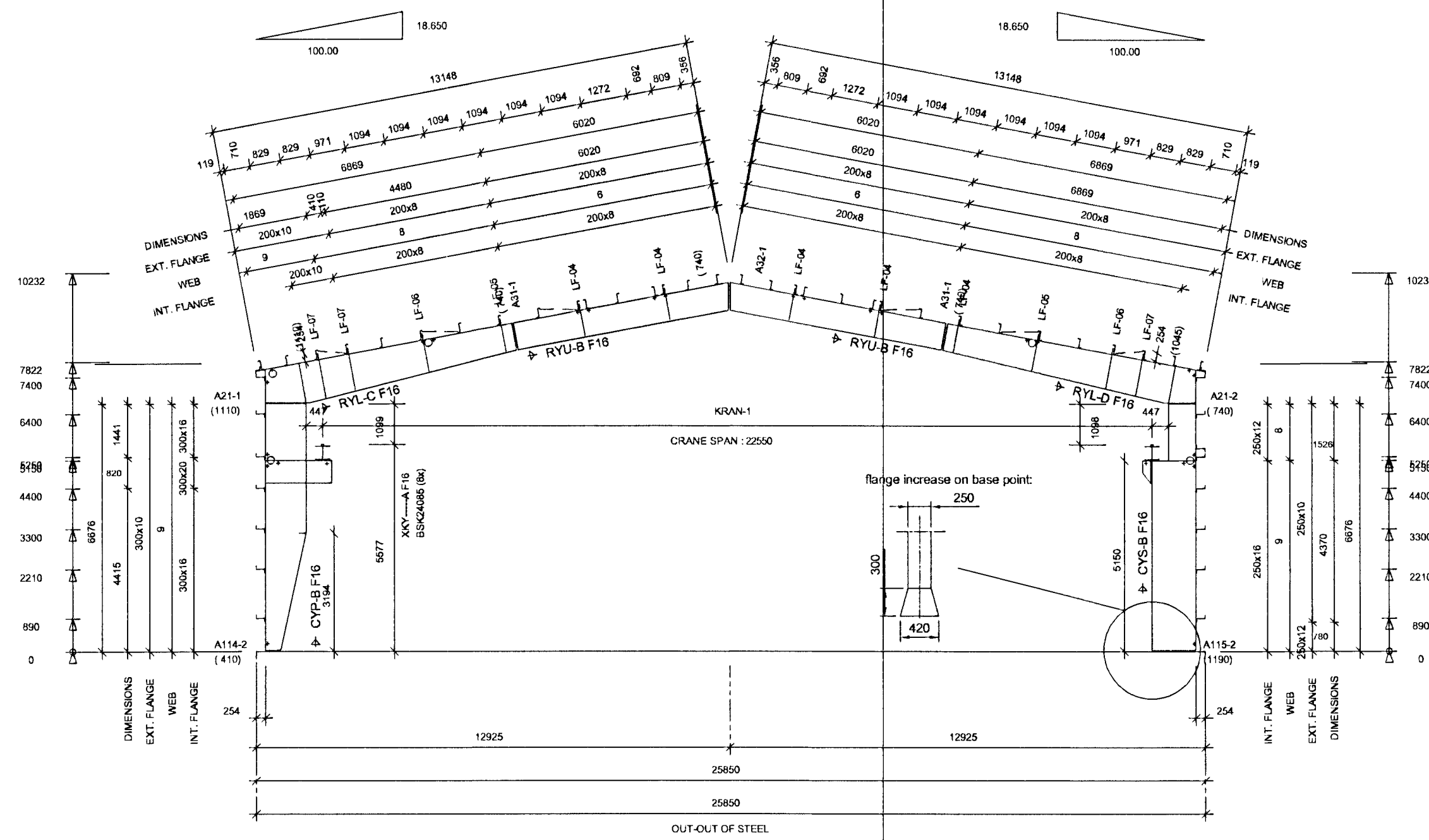
FRAME AXIS : 2
CONNECTION TYPE : A32-1



A32-1: BOLTS M20, Quality 10.9
 All welds : a=4.5mm
 All stiffeners triangle 200°90°9, Unless noted different
 Steel quality S355, Unless noted different
 All welds single, Unless noted different

CONNECTION	BOLT	QTY
A21-1	BSK2408	2,2-4,2
A21-2	BSK2408	2,2-4,2
A31-1	BSK2007	2,2-2,2
A32-1	BSK2007	2,2-2,2

BSK = DIN 914 / 24085 + M 24 x 85



AXIS : 2
(SCALE: 1/125)

FORM+RYMI
Architektura i Projektowanie

ÚS OG RÁÐGIÖF ehf.
 Arkitektúr- og Verkfræðistofa
 Kt. 510393-2529 · Vak. 37600
 Skúlagata 63 · 105 Reykjavík
 Sími 562-2420 · Fax 562-2430
 Pól. Sigurður Þóroddsson
 Hjálpi G. Samúelsson

STD PROFILES DESCRIPTION LIST	NSTD PROFILES DESCRIPTION LIST
LF - FLANGE BRACING 50°50°3.2	

- TECHNICAL NOTES
- Drawings to read in conjunction with ASTRON technical manual
 - All measures in millimeters
 - * = Field adapted
 - Design of foundations by local engineer
 - Applicable column reactions see chart "Foundation Reactions"
 - Purlin spacings are rounded to mm and cannot be added
 - Flange bracings installation per standard detail W1 chapter
 - Field locate roof openings and accessories
 - Compensation of panel tolerance currently during installation
 - Unless noted differently:
 - 1) Purlin diaphragms - At peak (see W316, W326, W327)
 - Double purlins (see W311, W321)
 - 2) Wind bracing details, see chapter W2
 - 3) Roof stabilisation if necessary:
 - Purlin spacers (HSA, HSB, HSC, SEE W37 AND W38)
 - Sag rods (RSG, ...) see W6 and cross section
 - Tie straps (HC 250) see W7 chapter
 - Field cut and adapt girts and panels shown in overlap with an accessory element

Bogunfarfylling Heimirjarðar
 Afg. og þann
 15 APR. 2002
 VG

This design is Astron property, copying and manufacturing components according to these drawings or calculations is illegal.

DET: A114 A115 A21 A31 A32 R451 W111 W112 XR111			
	2x 2806/01	Stalex EHF. + Erection	
	4x 0706/01	Stalex EHF.	
		TRANSMITTALS	

ISHELLA 10

PROJ: VELSMDJUA 1 - ICELAND	BD: STALEX EHF.
BUILDING: AZM1 18.6% SPAN 25.850m EH7.822m L.56.44m ALT.	
LOADS: LL/M/Adol.: 100/165/30 (Da/N/m2)	CRANE: 1x3.6, 1x20, 1x5
NORMS: PRIM. AISC	SEC. AISI
	MEMBR. 16h19

JACK FRAME AXIS 1+2

REV. A: Allgemeine Uebersarbeitung; 28.06/01; To B.
 REV. B.
 REV. C.

ASTRON
 COMMERCIAL INTERTECH S.A. - P.O. Box 152 - L-9202 DIEKIRCH-LUXEMBOURG - tel (352) 802911

103065
 CS-2
 DATE: 06/06/01
 ENG.: P.FAUTSCH
 DRAF.: T.BUEGGEMANN