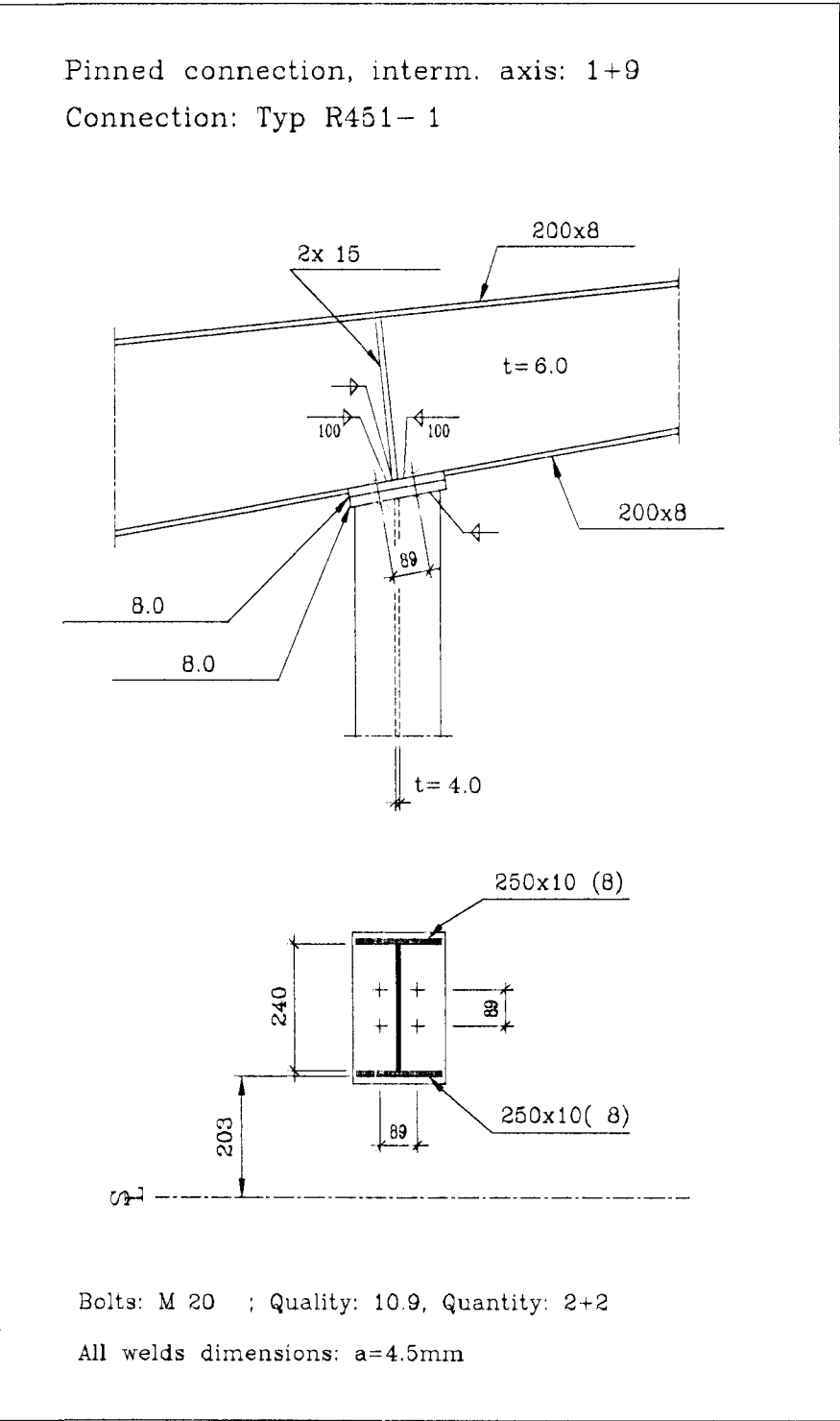
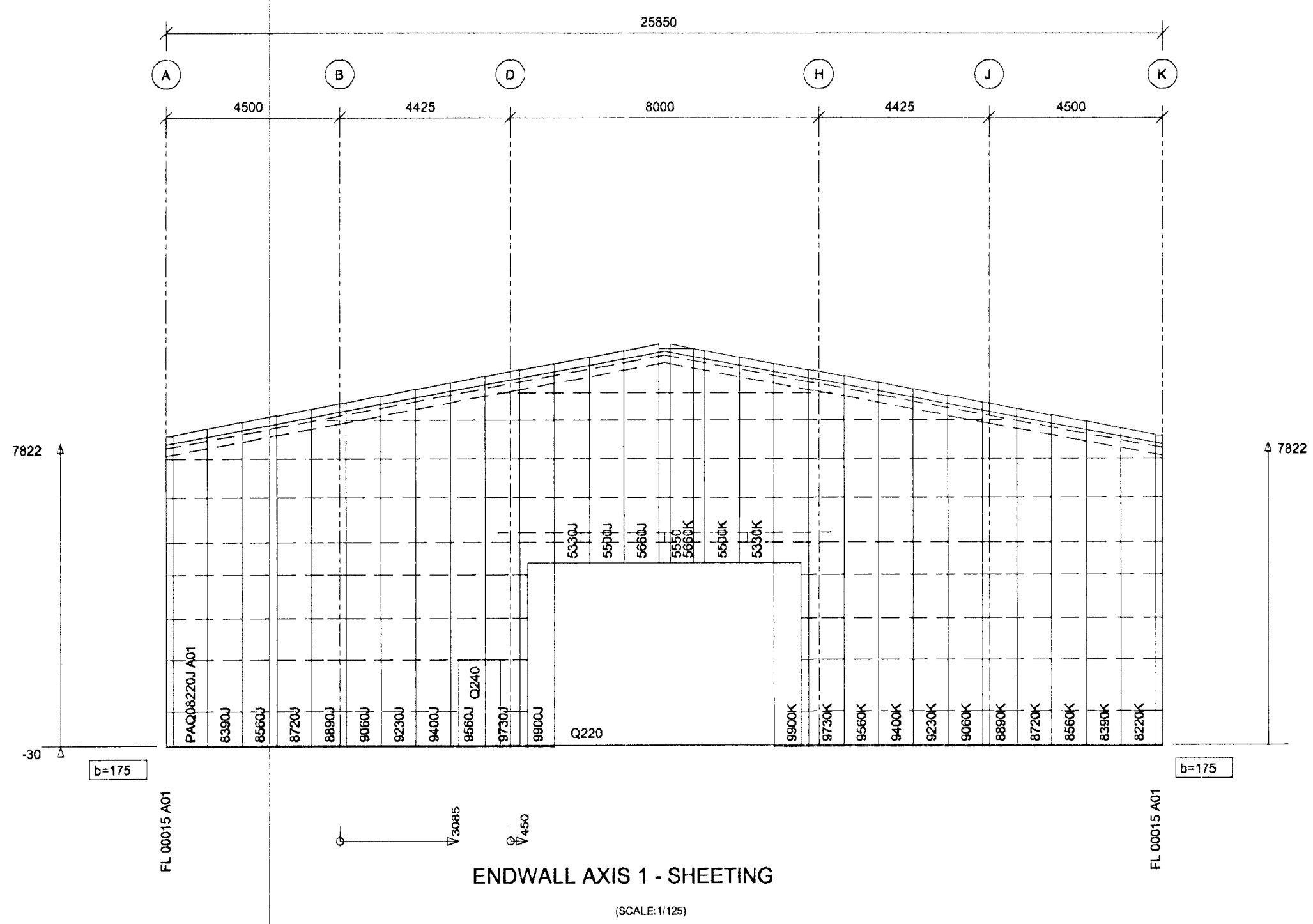


SECTION Z - Z



Bolts: M 20 : Quality: 10.9, Quantity: 2+2  
All welds dimensions: a=4.5mm



STD PROFILES DESCRIPTION LIST	NSTD PROFILES DESCRIPTION LIST
FL : NOT DEFINED UCA : SILL CHANNEL 203*81*1.95 ZLA : ZEE LAP COND. 203*1.52 ZLB : ZEE LAP COND. 203*1.70 ZLC : ZEE LAP COND. 203*1.91 ZLE : ZEE LAP COND. 203*2.67	EYS : ENDWALL COLUMN XCH-B : DOOR HEADER 254 * 3.00 XCB-B : DOOR JAMB 254 * 3.00 XLF : RAKE ANGLE 50°50'2

- TECHNICAL NOTES**
- Drawings to read in conjunction with ASTRON technical manual
  - All measures in millimeters
  - \* = Field adapted
  - Design of foundations by local engineer
  - Applicable column reactions see chart "Foundation Reactions"
  - Purlin spacings are rounded to mm and cannot be added
  - Flange bracings installation per standard detail W1 chapter
  - Field locate roof openings and accessories
  - Compensation of panel tolerance currently during installation
  - Unless noted differently:
    - Purlin diaphragms - At peak (see W316, W326, W327)
      - Double purlins (see W311, W321)
    - Wind bracing details, see chapter W2
    - Roof stabilisation if necessary:
      - Purlin spacers (HSA, HSB, HSC, HSD, SEE W37 AND W38)
      - Sag rods (RSG...) see W6 and cross section
      - Tie straps (HC 250) see W7 chapter
  - Field cut and adapt girts and panels shown in overlap with an accessory element

15 APR. 2002  
VC

This design is Astron property, copying and manufacturing components according to these drawings or calculations is illegal.

DET: 4T198 4T20 4T31 4T43 5T19 5T41 A21 I280 I281 K280 K281 K282 K283 R451 S111 S116 S222 S916 S917 S918 S919 S931 S932 S933 S934 V512 V517 W211 W212 W221 W222 W241 W311 XS11	4x 07/06/01 Stalex EHF. TRANSMITTALS
<b>ÍSHELLA 10</b>	
PROJ: VEISMOJIA 1 - ICELAND B/D: STALEX EHF.	
BUILDING: AZM1 18.6% SPAN/25.850m EH 7.822m L56.44m ALT.	
LOADS: LUWLA04L : 100/165/30 (DaNm <sup>2</sup> ) CRANE: 1x3.8; 1x20; 1x5	103065
NORMS: PRIM. AISC SEC. AISI MENBR - 16h19	EW-1 A
ASTRON ENDWALL AXIS 1 (FRAMING, SHEETING)	DATE: 06/06/01 ENG.: P.FAULTSCH DRAF: T.BRUEGGEMANN 12/09/01 H. G. S.
REV. A: REINFORCEMENT OF GIRTS IN BAY D - H, SEE REV. B. REV. C.	

FORM+RYMI  
HÚS OG RÁÐGJÖF ehf.  
ARKITEKTUR OG VERKFR. FÉLISSTOFA  
Kl. 510393-2529 - Vsk. 37600  
Skúlagötu 63 - 103 Reykjavík  
Sími 562-2420 - Fax 562-2130  
1.10.2001  
Helgi G. Samuelsen