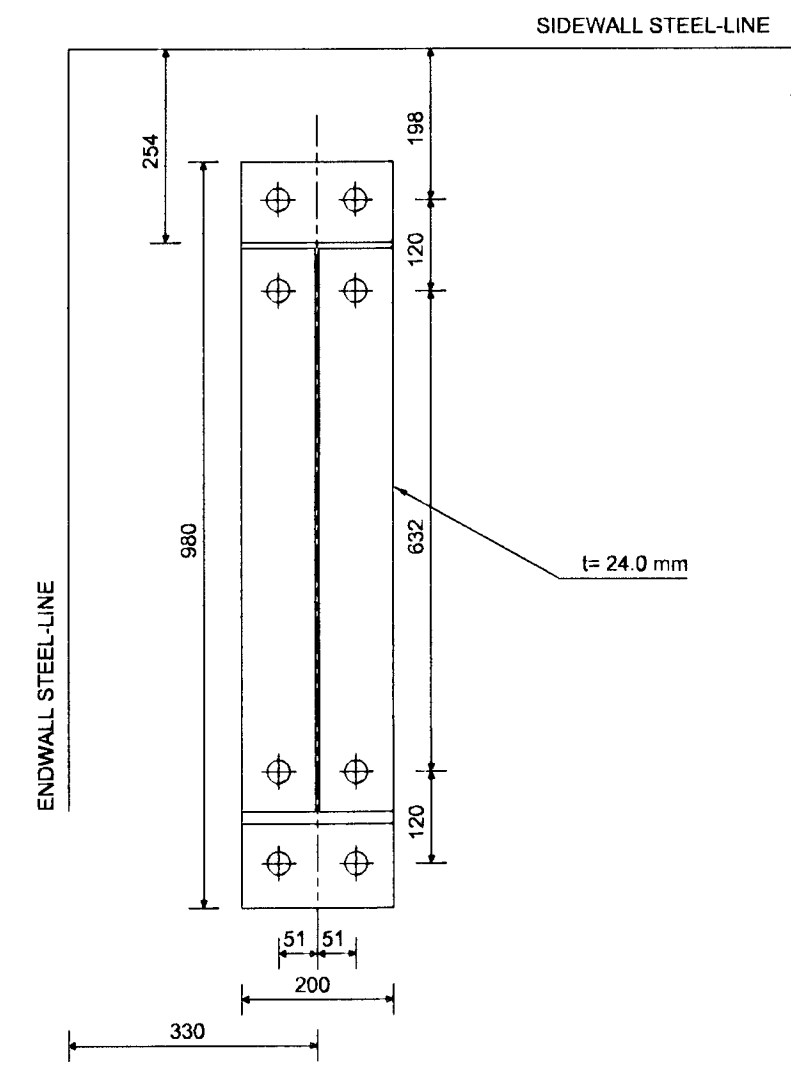
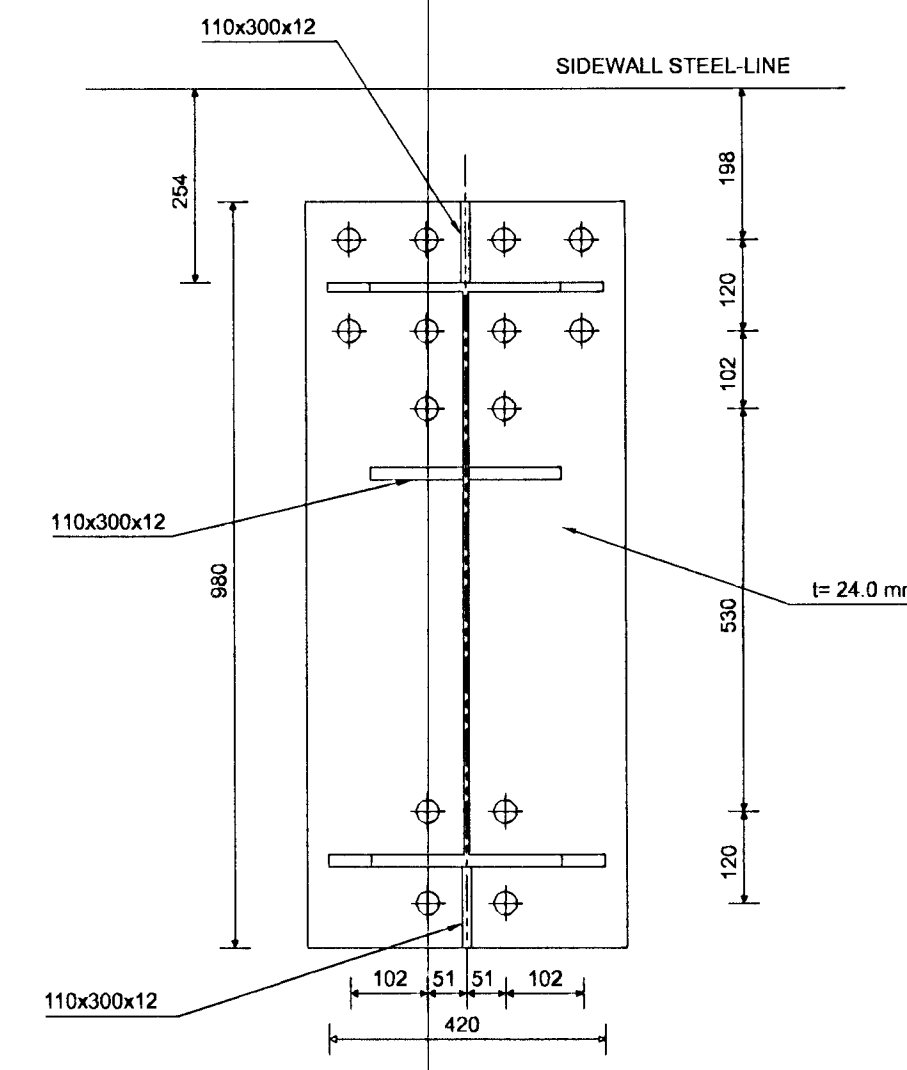


ANCHORBOLT - PLAN
(SCALE:1/100)



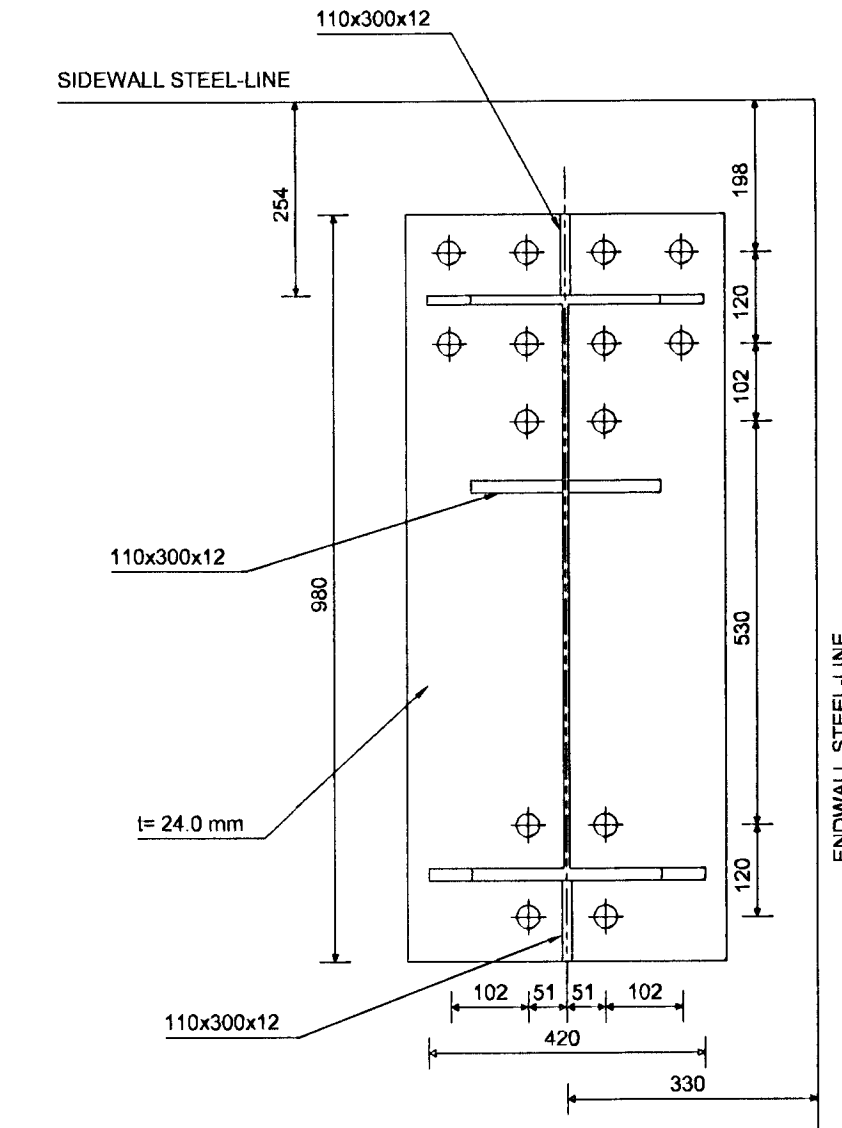
A115-3

(8X) BAM30610
SKP—A



A115-4

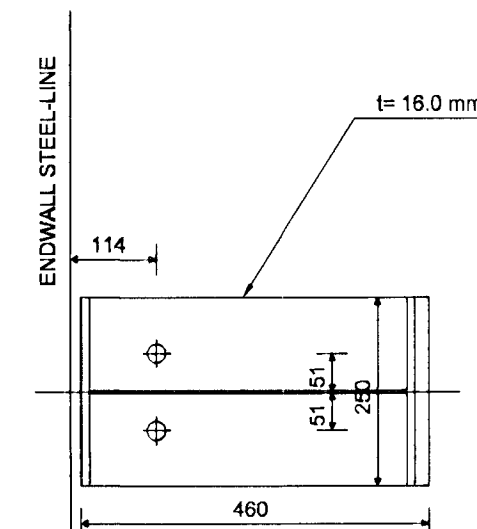
(14X) BAM30610
SKP—B



A115-4

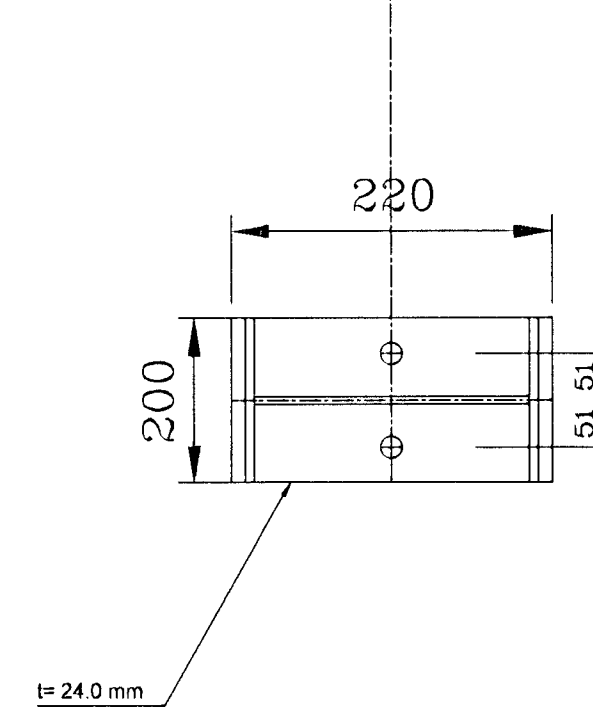
(14X) BAM30610
SKP—B

10'+11'+11'

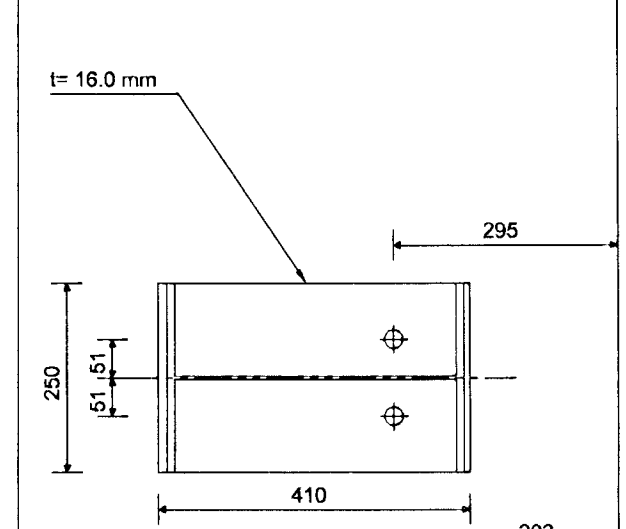


XR121-1

(2X) BAM24460
CL 21608



A134-1
(1x BAM24460)

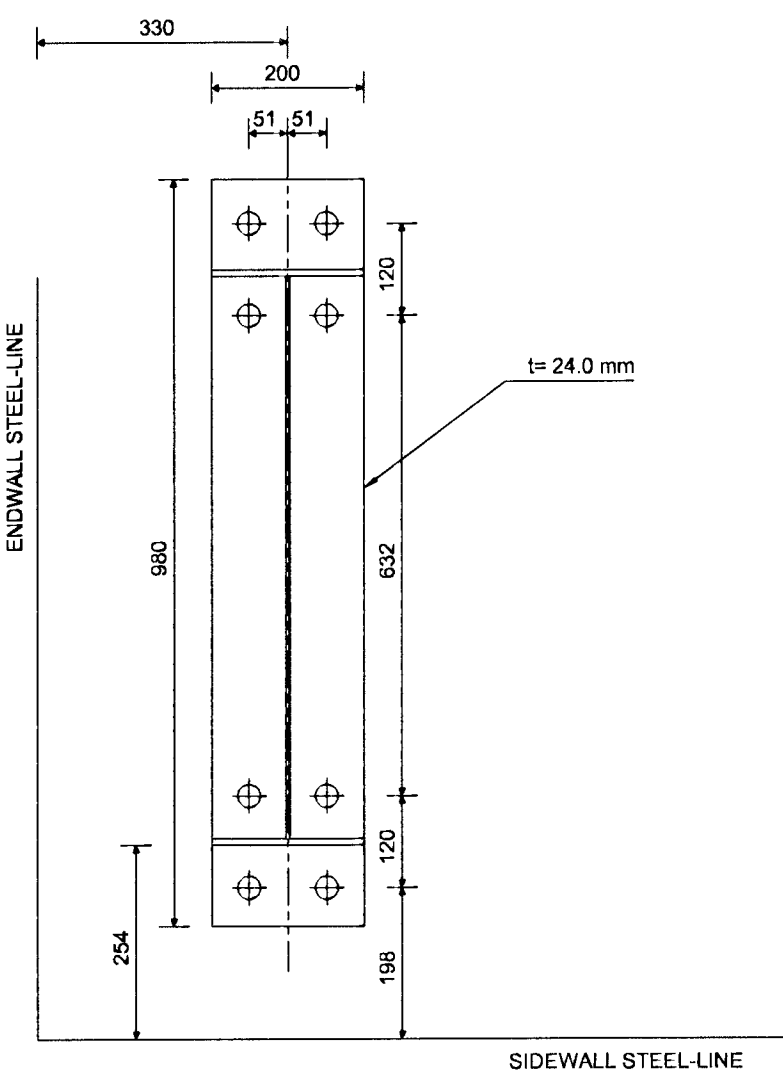


XR111-1

(2X) BAM24460
CL 21608

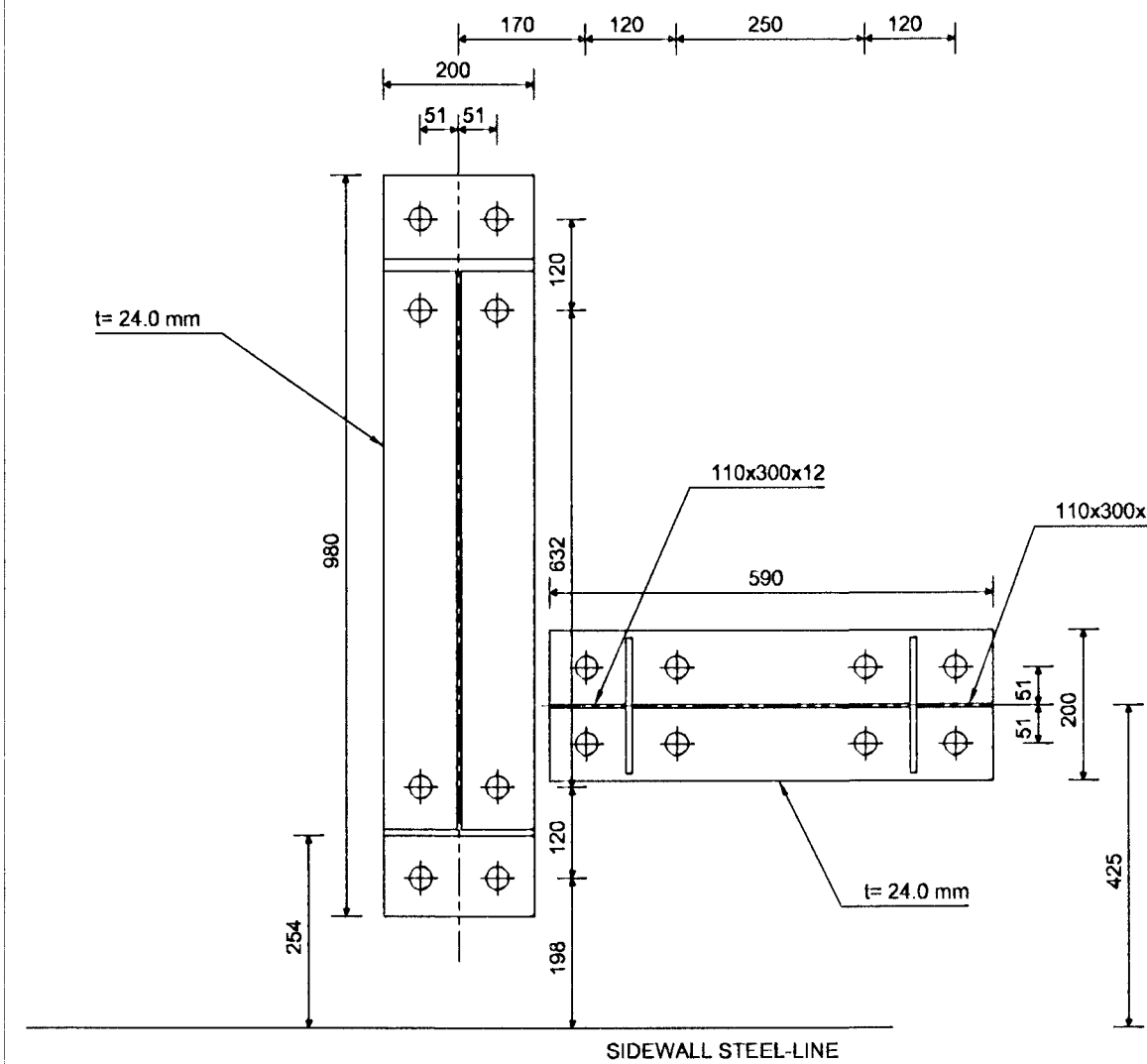
SKP—A
(8X) BAM30610

A115-3



SKP—A
(8X) BAM30610

A165-1

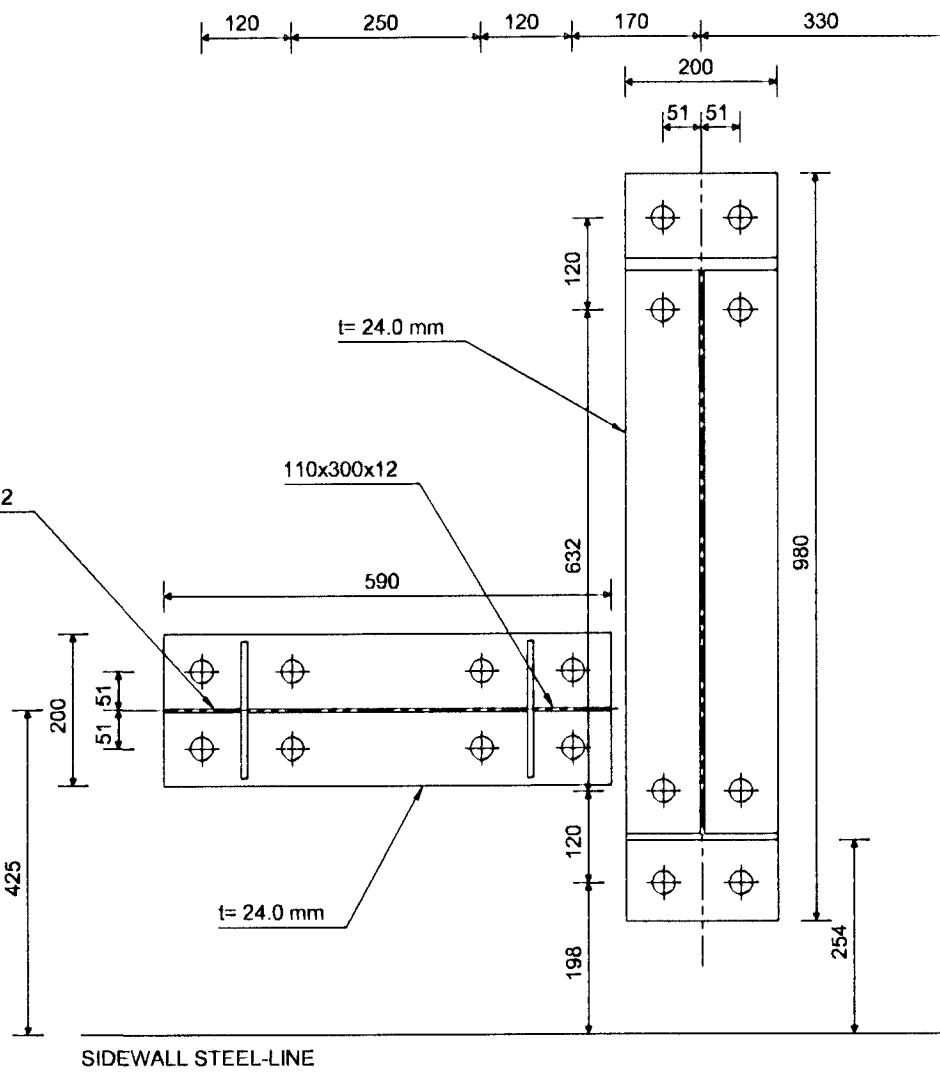


SKP—C
(8X) BAM30610

A165-2

SKP—C
(8X) BAM30610

SKP—A
(8X) BAM30610



TO BE CHECKED / SUMMARY

- Finish coat on primary framing : F16
- Finish of secondary framing : GAL
- Roof panels : PSE AZA / PSE AZA
- Wall panels : PAQ A01
- Inside sheeting : PIQ A01
- Gutters + rakes : ???
- Downspouts : ???
- Roof insulation : 200mm WOF + isoblock
- Wall insulation : only isoblock + long screws

TECHNICAL NOTES

1. Drawings to read in conjunction with ASTRON technical manual
2. All measures in millimeters
3. * = Field adapted
4. Design of foundations by local engineer
5. Applicable column reactions see chart "Foundation Reactions"
6. Purlin spacings are rounded to mm and cannot be added
7. Flange bracings installation per standard detail W1 chapter
8. Field locale roof openings and accessories
9. Compensation of panel tolerance currently during installation
10. Unless noted differently:
 - 1) Purlin diaphragms - At peak (see W316, W326, W327)
 - Double purlins (see W311, W321)
 - 2) Wind bracing details, see chapter W2
 - 3) Roof stabilisation if necessary:
 - Purlin spacers (HSA, HSB, HSC, HSD. SEE W37 AND W38)
 - Sag rods (RSG, ...) see W6 and cross section
 - Tie straps (HC 260) see W7 chapter
11. Field cut and adapt girls and panels shown in overlap with an accessory element

This design is Astron property, copying and manufacturing components according to these drawings or calculations is illegal.

Byggingafréttir Háemarjardar
Alfreit þann
15 APR. 2007
V.G.

DET: A115 A165 XR111 XR121

ISHELLA 10

PROJ: VELSMJAJA 2 - ICELAND
BUILDING: AL -18.7% SPAN:12850m EH:10.219m L:11.31m ALT:
LOADS: LL/W:Addl: 100/165/30 (Da/N/m2)

4x 07/06/01 Stalex EHF.
TRANSMITTALS

CRANE: 103228

NORMS: PRIM. DIN SEC. AISI

MENBR - 08+48

ANCHORBOLTS

REVISIONS:
REV. A
REV. B
REV. C

ASTRON

COMMERCIAL INTERTECH S.A. - P.O.Box 152 - L-9202 DIEKIRCH-LUXEMBOURG - tel:352/802811

STEEL QUALITY OF ANCHOR BOLTS IS FE510 (YIELD POINT 355 N/mm2)

ANCHOR BOLT DIMENSIONS

PN	DIAM	L	H
BAM18380	18	380	50
BAM24460	24	460	80
BAM30610	30	610	100

ANCHOR BOLT DIMENSIONS

PN	DIAM	L	H
BY 00001	2x18	500	40
BY 80105	2x24	500	60

DATE: 06/06/01
ENG.: P.FAUTSCH
DRAF.: T.BRUEGGEMANN