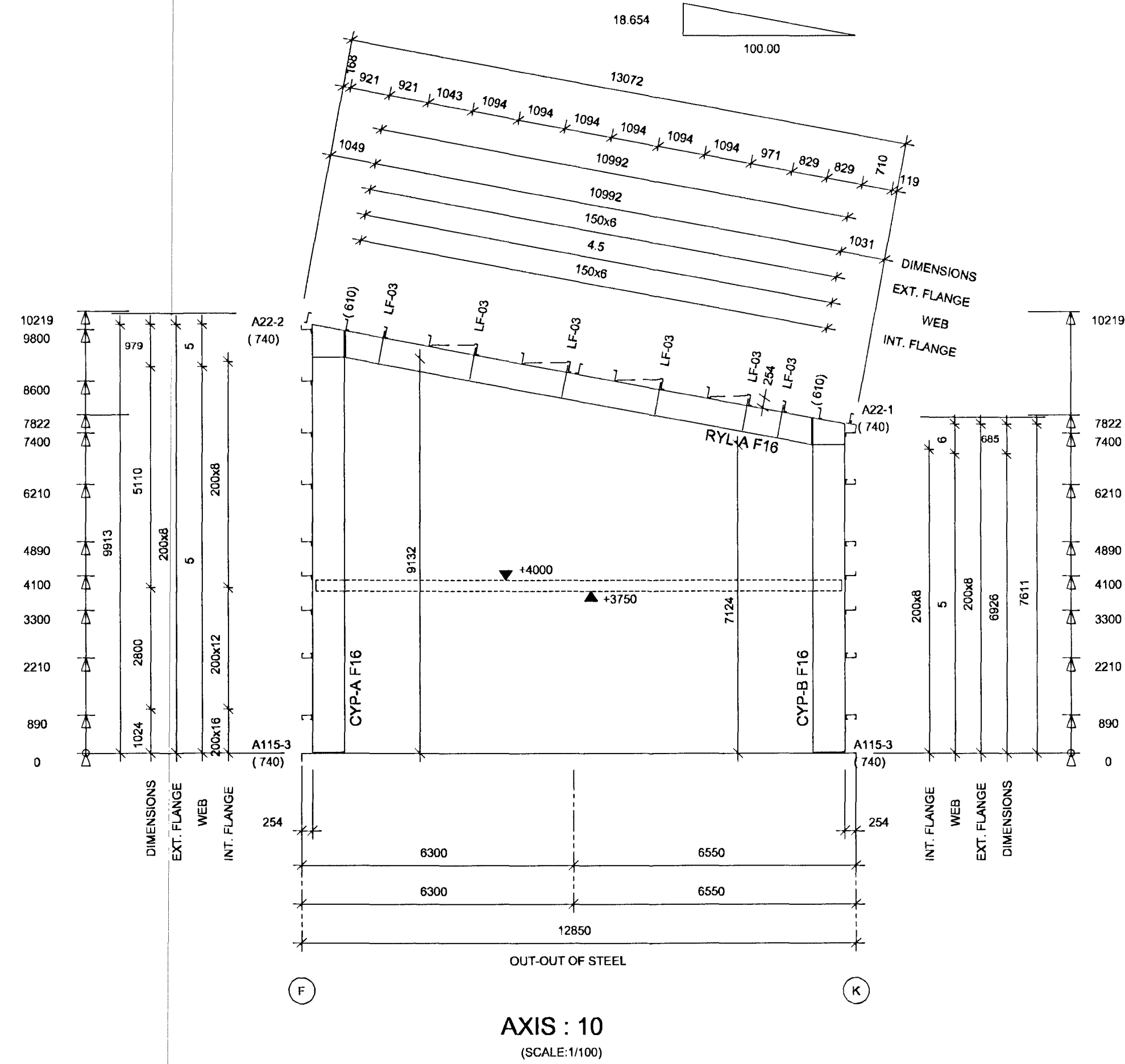
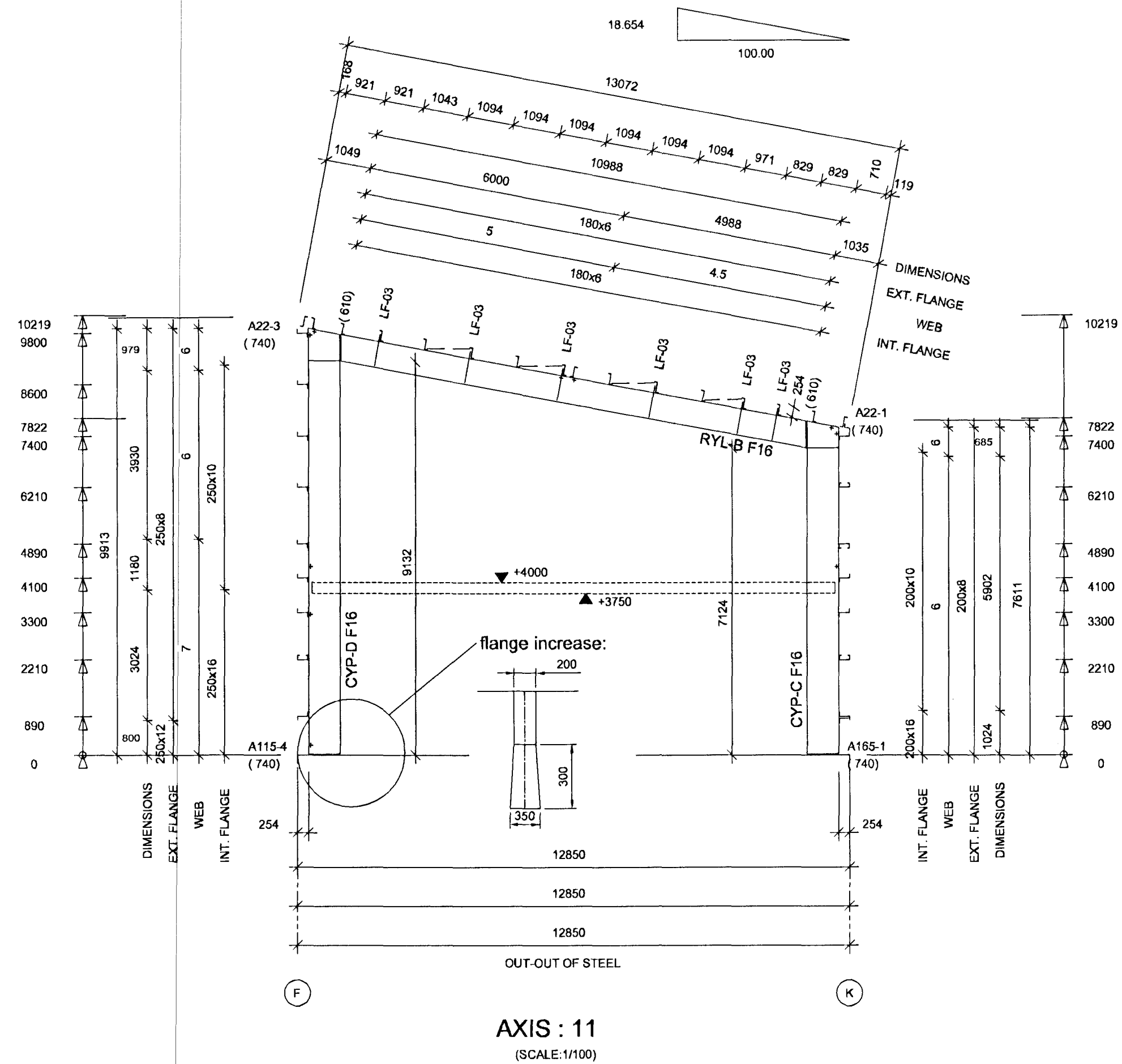


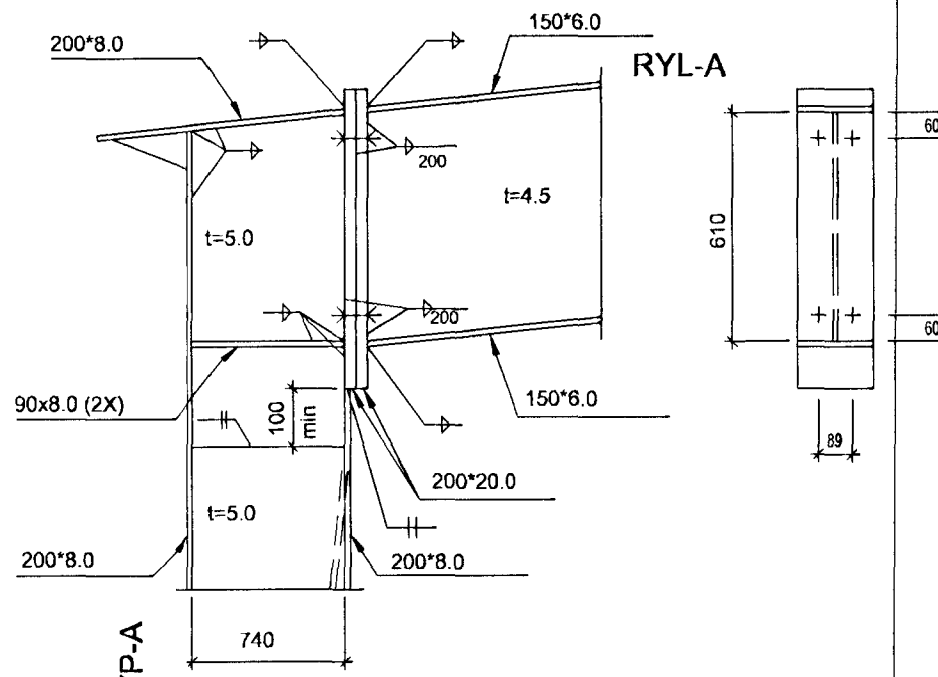
CONNECTION	BOLT	QTY
A22-1	BSK20075	0,2 - 2,0
A22-2	BSK20075	0,2 - 2,0
BSK = DIN 6914 / 20075 = M 20 x 7,5		



CONNECTION	BOLT	QTY
A22-1	BSK20075	0,2 - 2,0
A22-3	BSK20075	0,2 - 2,2
BSK = DIN 6914 / 20075 = M 20 x 7,5		

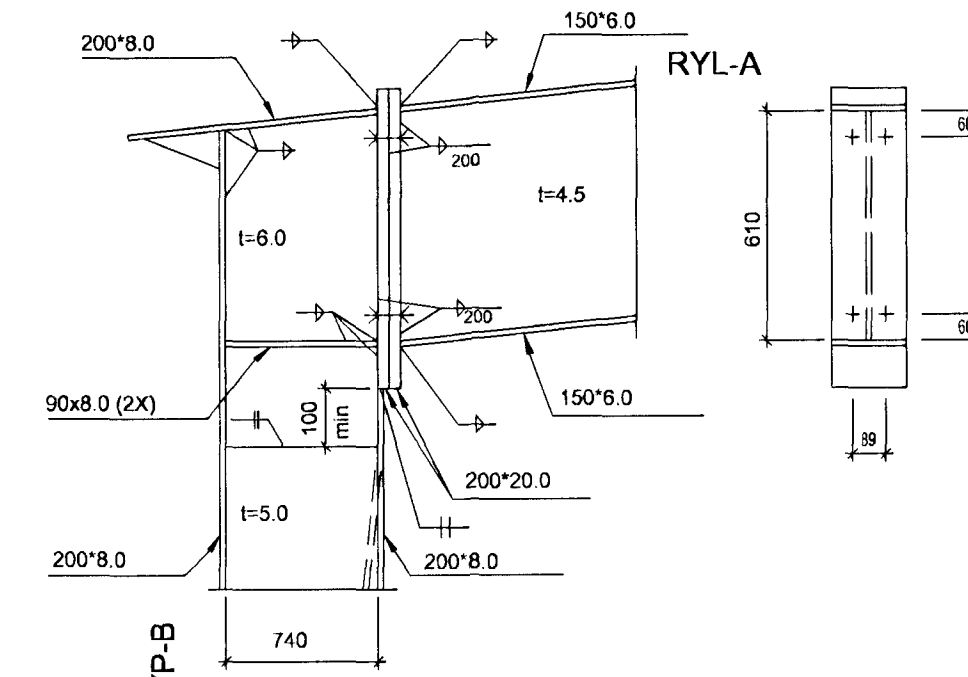


FRAME AXIS : 10
CONNECTION TYPE : A22-2



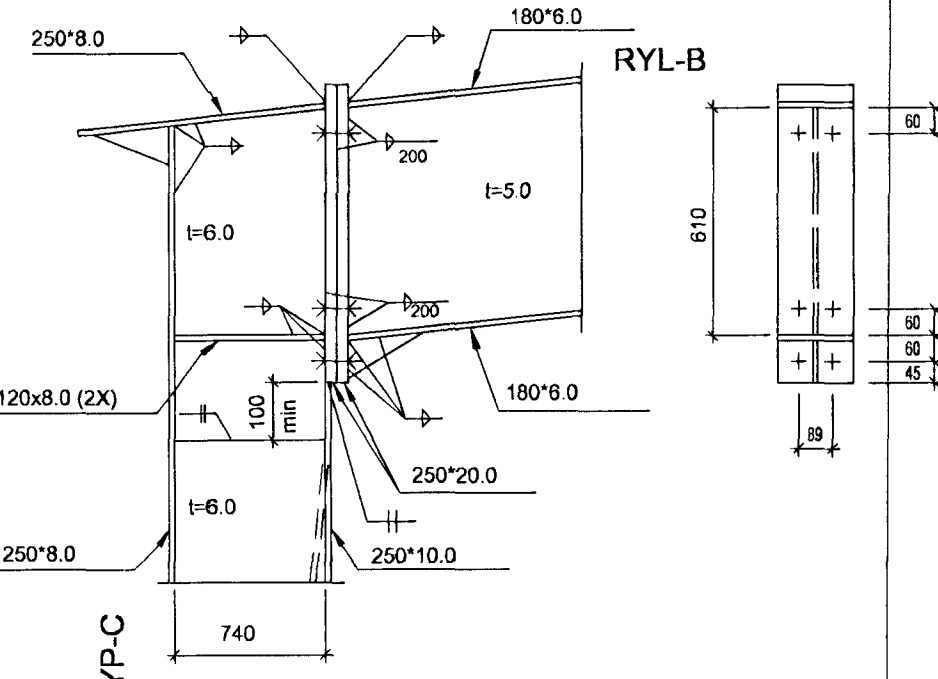
A22-2: BOLTS M20, Quality 10.9
All welds : a=4.5mm
All stiffeners triangle 200°90°9, Unless noted different
Steel quality S355, Unless noted different
All welds single, Unless noted different

FRAME AXIS : 10
CONNECTION TYPE : A22-1



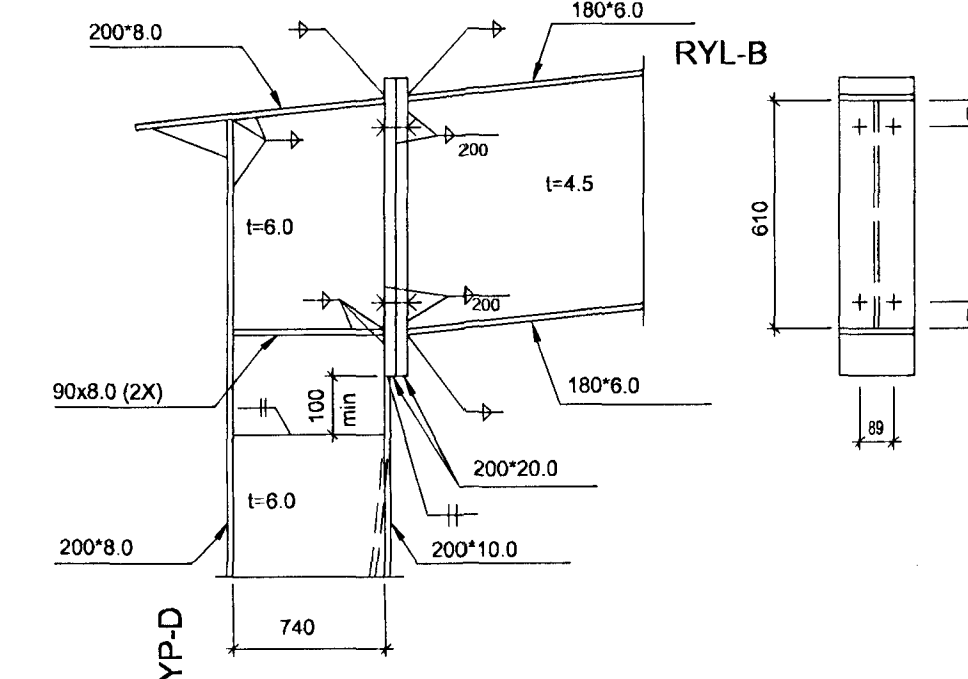
A22-1: BOLTS M20, Quality 10.9
All welds : a=4.5mm
All stiffeners triangle 200°90°9, Unless noted different
Steel quality S355, Unless noted different
All welds single, Unless noted different

FRAME AXIS : 11 + 12
CONNECTION TYPE : A22-3



A22-3: BOLTS M20, Quality 10.9
All welds : a=4.5mm
All stiffeners triangle 200°90°9, Unless noted different
Steel quality S355, Unless noted different
All welds single, Unless noted different

FRAME AXIS : 11 + 12
CONNECTION TYPE : A22-1



A22-1: BOLTS M20, Quality 10.9
All welds : a=4.5mm
All stiffeners triangle 200°90°9, Unless noted different
Steel quality S355, Unless noted different
All welds single, Unless noted different

HÚS OG RÁÐGJÖF ehf.
VAKTERTUR OG VEIRNÁRÁÐSTOFA
Kt. 510393-2529 - Vsk. 37600
Skúlagata 63 - 103 Reykjavík
Sími 562-2420 - Fax 562-2430
21. september 2001
Hilmar Gunnarsson

FORM+RYMI
ERBYRIN ENDRÆÐINGEN LÖSTVÆTT FÖT

STD PROFILES DESCRIPTION LIST	NSTD PROFILES DESCRIPTION LIST
LF : FLANGE BRACING 50°50°32	

- TECHNICAL NOTES
- Drawings to read in conjunction with ASTRON technical manual
 - All measures in millimeters
 - * = Field adapted
 - Design of foundations by local engineer
 - Applicable column reactions see chart "Foundation Reactions"
 - Purlin spacings are rounded to mm and cannot be added
 - Flange bracings installation per standard detail W1 chapter
 - Field locate roof openings and accessories
 - Compensation of panel tolerance currently during installation
 - Unless noted differently :
 - Purlin diaphragms - At peak (see W316, W326, W327)
 - Double purlins (see W311, W321)
 - Wind bracing details, see chapter W2
 - Roof stabilisation if necessary :
 - Purlin spacers (HSA, HSB, HSC, HSD, SEE W37 AND W38)
 - Sag rods (RSG,) see WB and cross section
 - Tie straps (HC 250) see W7 chapter
 - Field cut and adapt girts and panels shown in overlap with an accessory element

15 APR. 2002
VG

This design is Astron property, copying and manufacturing components according to these drawings or calculations is illegal.

DET: A115 A165 A22 R451 W112 XR121	
4x 07/06/01	Stalex EHF.
ÍSHELLA 10	
PROJ: VELSMÍÐIA 2 - ICELAND	BID: STALEX EHF.
BUILDING: AL -18.7% SPAN:12.850m EH:10.219m L:11.31m ALT:	103228
LOADS: LL/WL/AdL: 100/165/30 (DaNm2)	CRANE:
NORMS: PRIM. DIN SEC. AISI	MENBR - 08/48
JACK FRAME AXIS 10+11	
REV. A	DATE: 06/06/01
REV. B	ENG: P.FAUTSCH
REV. C	DRAF: T.BRUEGGEMANN
ASTRON	
COMMERCIAL INTERTECH S.A. - P.O. Box 152 - L-8002 DIEKIRCH-LUXEMBOURG - tel (352) 802911	