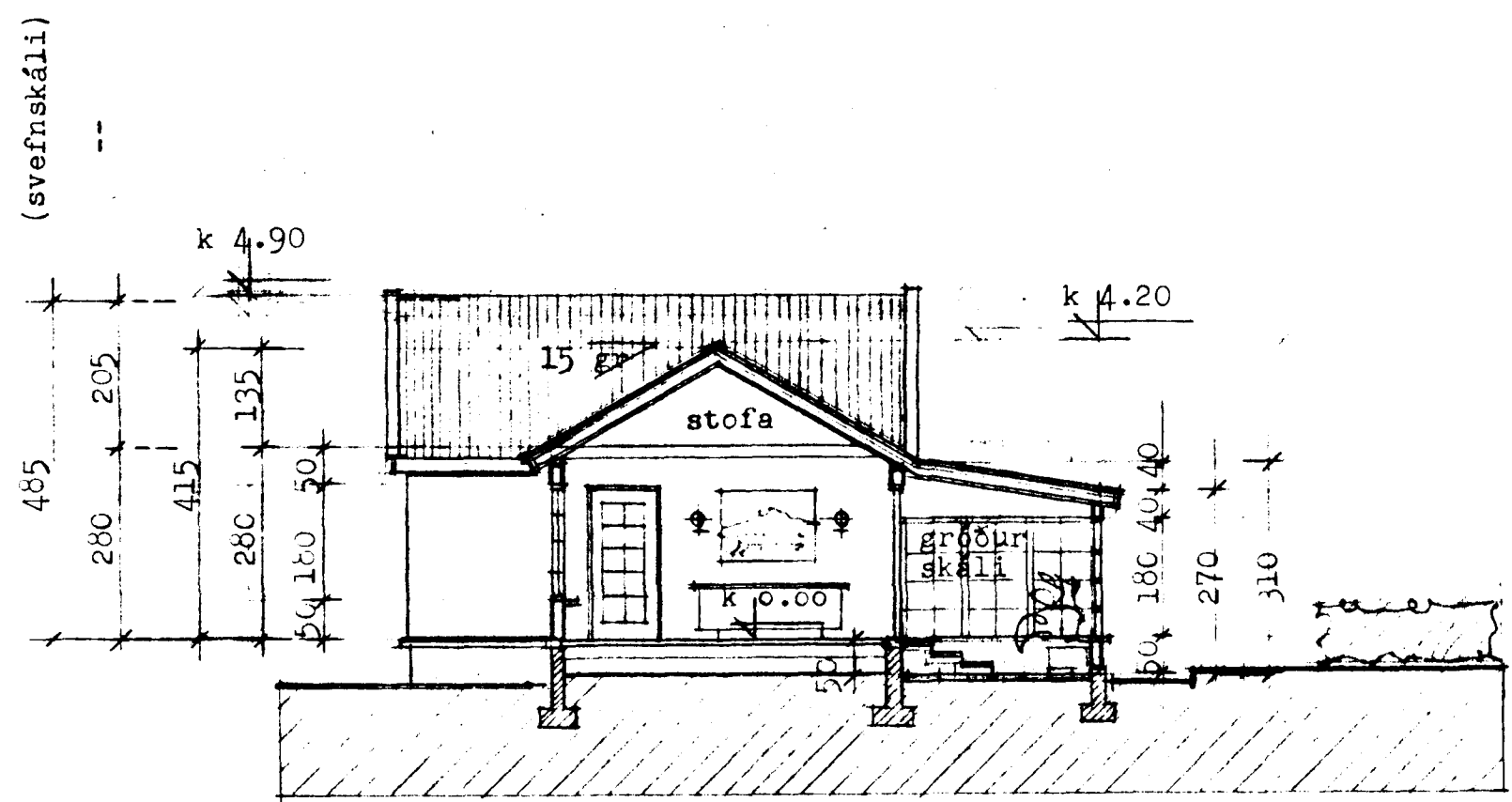
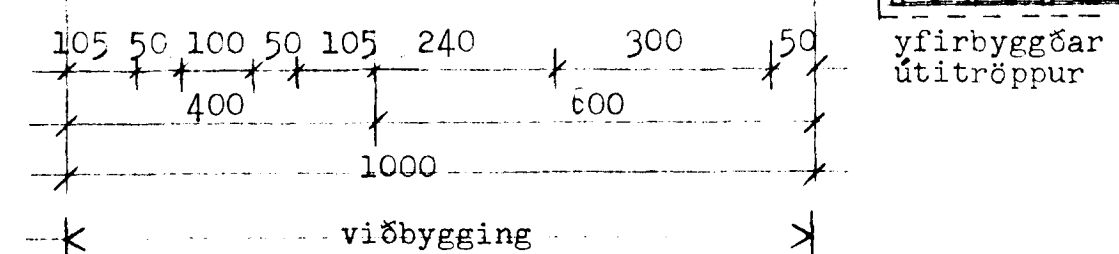


GRUNNMYND



ÞVERSNID

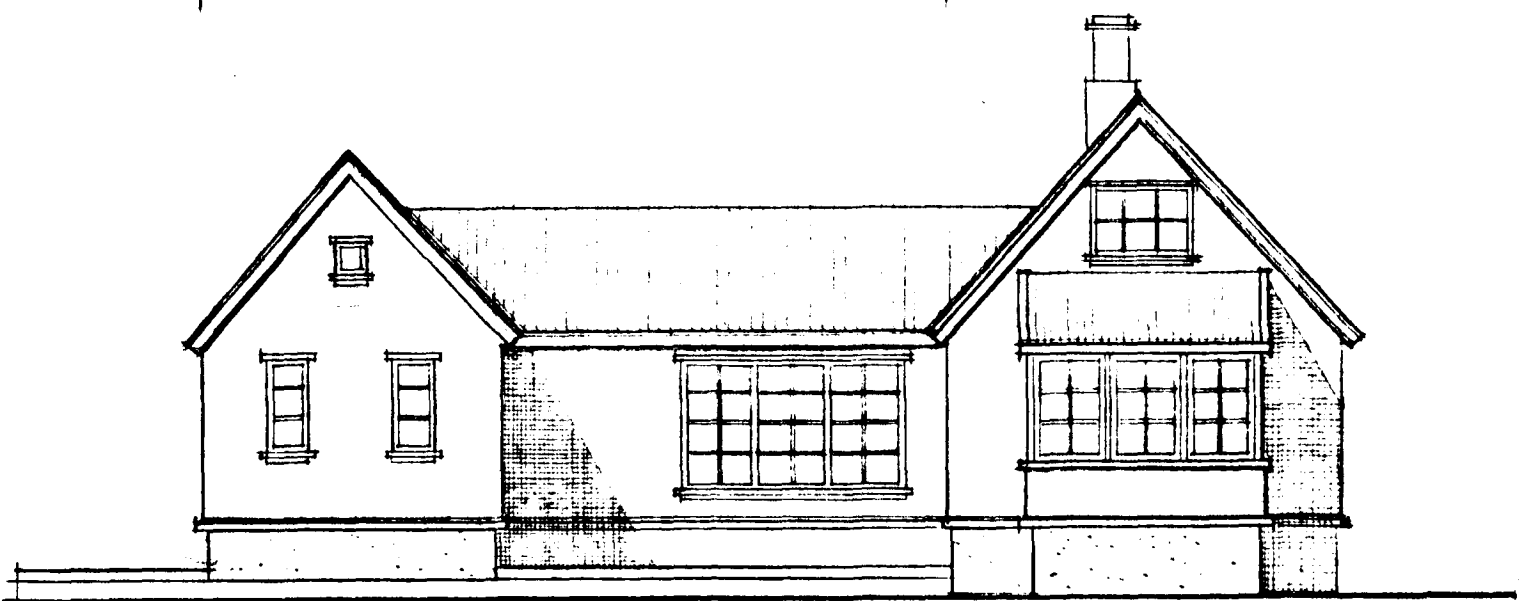
Samþykkt á fundi bygginga-  
nefndar þ. 4.10.1987  
BYGGINGAFULLTRÚINN  
Í HAFNARFIRÐI

*Ástundlaust*  
Þekkt er að fyrir liggja samþ. um lótarbr.  
með hljóðjón að br. skipulagi  
Samþykkt á neðranum liggja fyrir

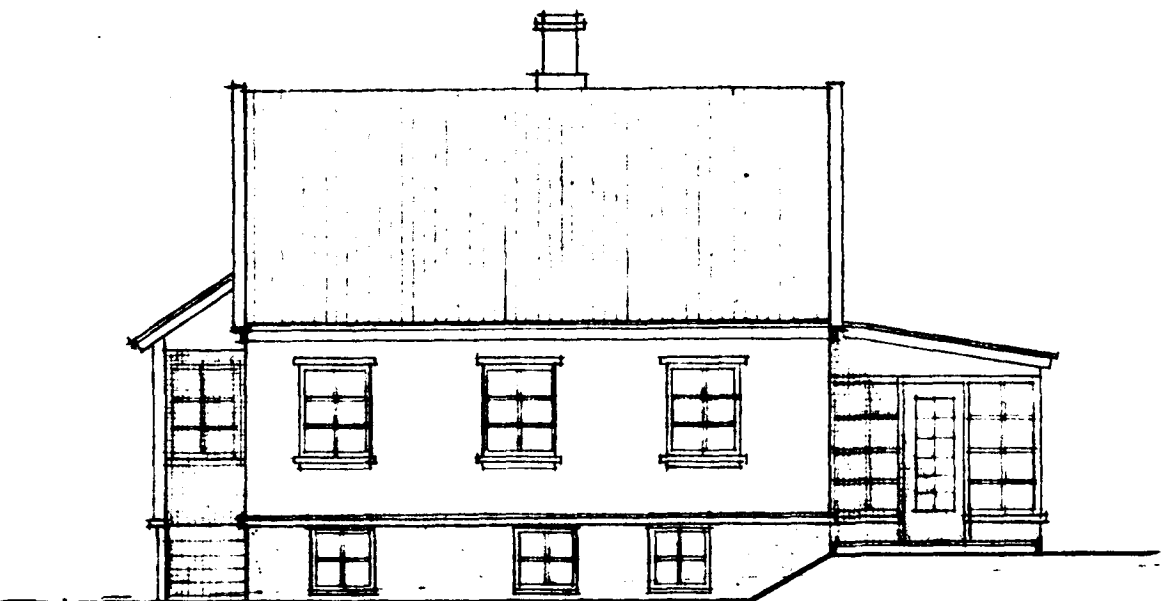
BRÚTTÓ  
FLATARMÁL:

Stofa	30 m <sup>2</sup>	Gróðurskáli	10.2 m <sup>2</sup>
Svefnskáli	28 m <sup>2</sup>		
Alls	58 m <sup>2</sup>		844 m <sup>3</sup>

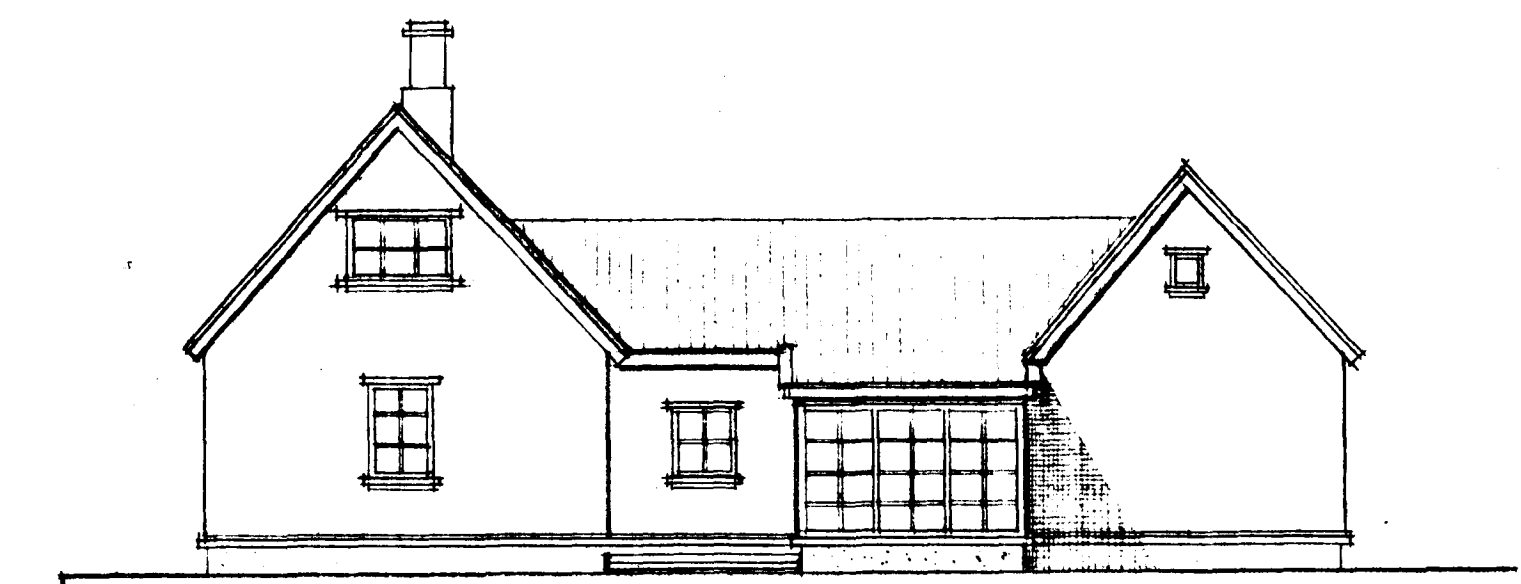
Heildarflatarmál viðbyggingar 68.2 m<sup>2</sup>



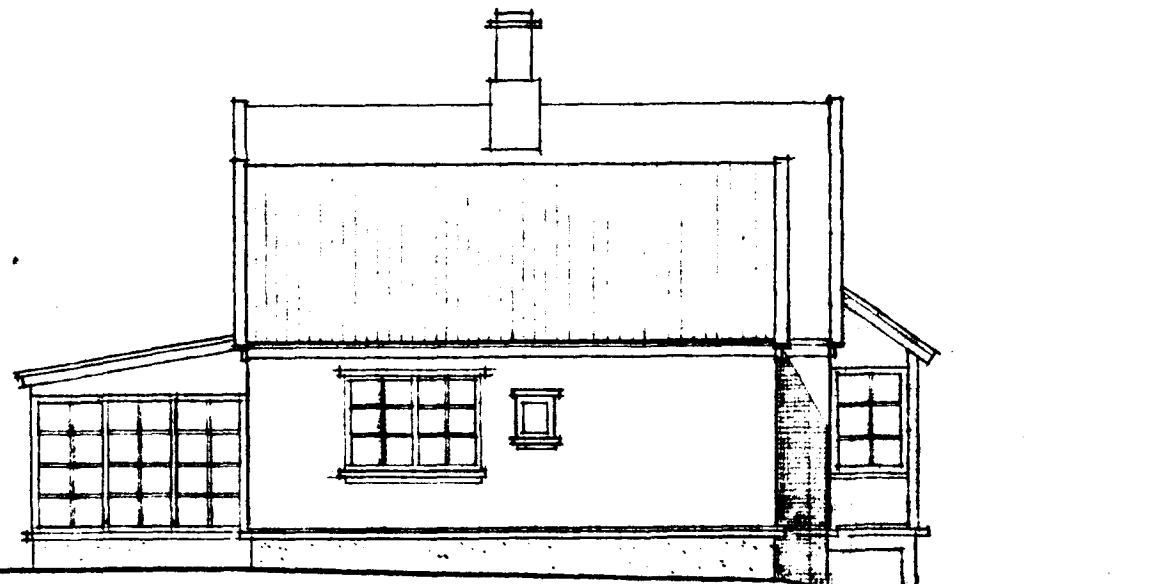
NORÐURHLIÐ



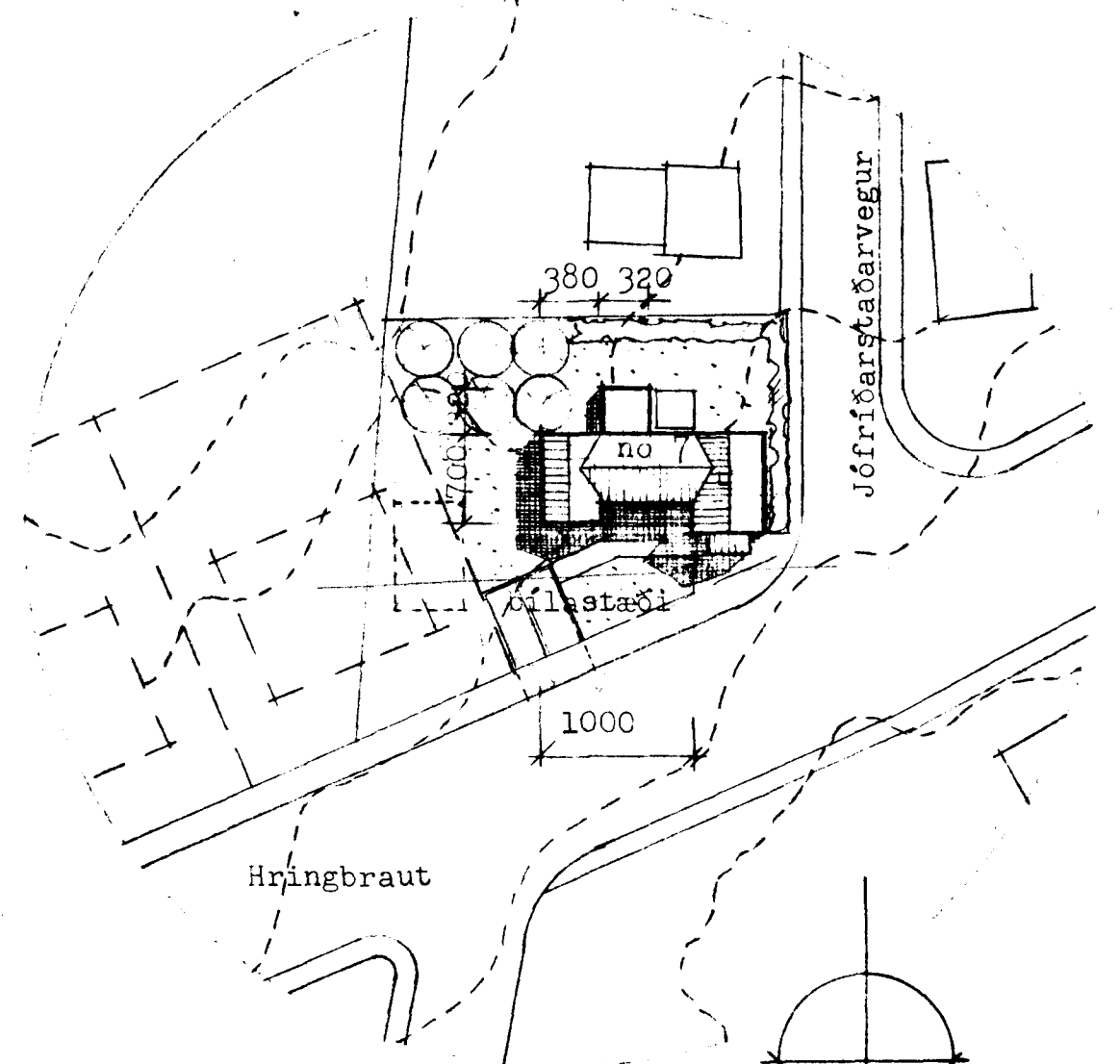
VESTURHLIÐ



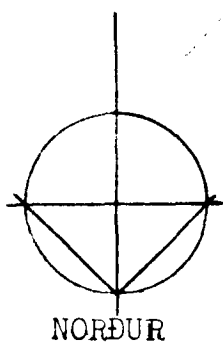
SUÐURHLIÐ



AUSTURHLIÐ



AFSTÖÐUMYND 1:500



JÓFRÍÐARSTADAVEGUR 7 HAFNARFIRÐI viðbygging.

ADALTEIKNING. grunnmynd snið útlit afstöðumynd.  
mkv 1:500 1:100 máí 1987. •g. br 4.6.87.

**TT3** TEIKNISTOFA TÚNGÖTU 3 101 REYKJAVÍK SÍMI 12070  
PÓRARINN PÓRARINSSON OG EGILL GUÐMUNDSSON, Arkitektar FAÍ  
*Árn Jónsson*