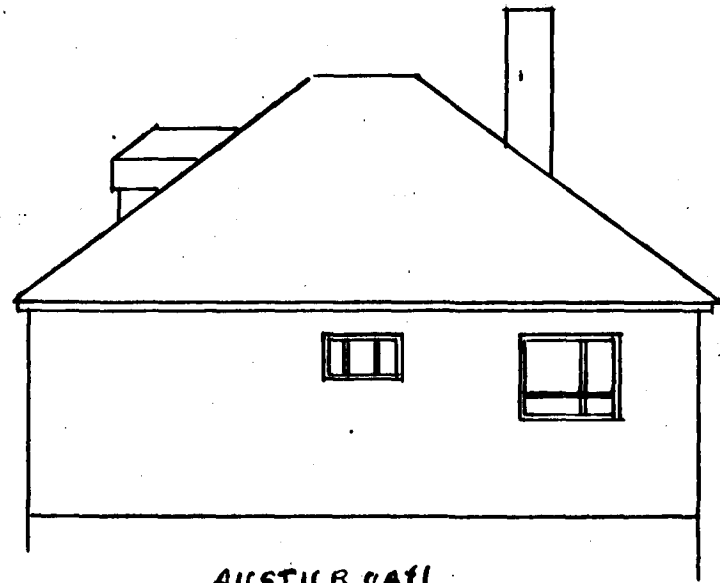
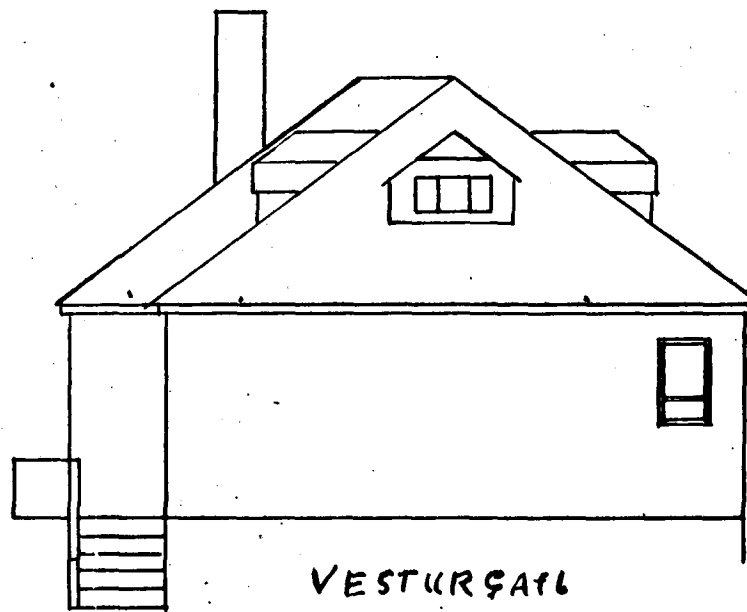


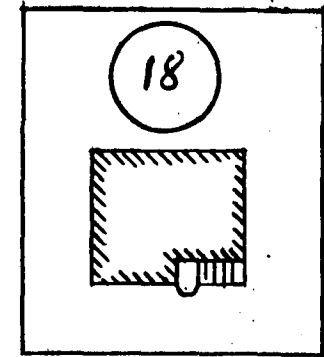
Hús Háldans Þorgeirssonar við Köldukinn. 18 í Hafnarfirði.



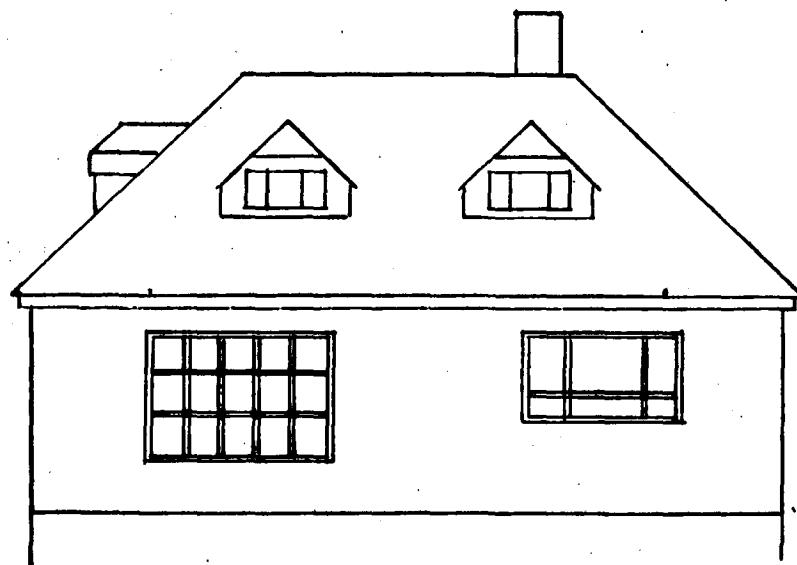
AUSTURGAFL



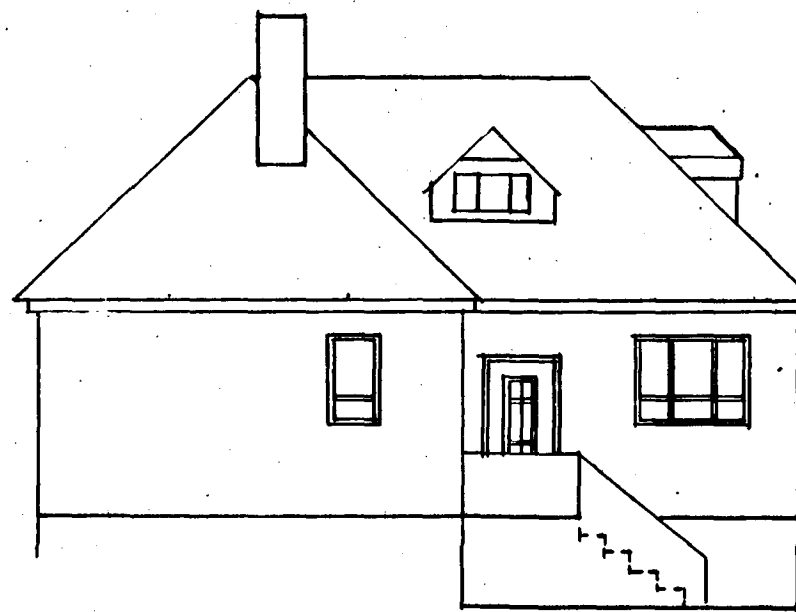
VESTURGAFL



KALDAKINN.



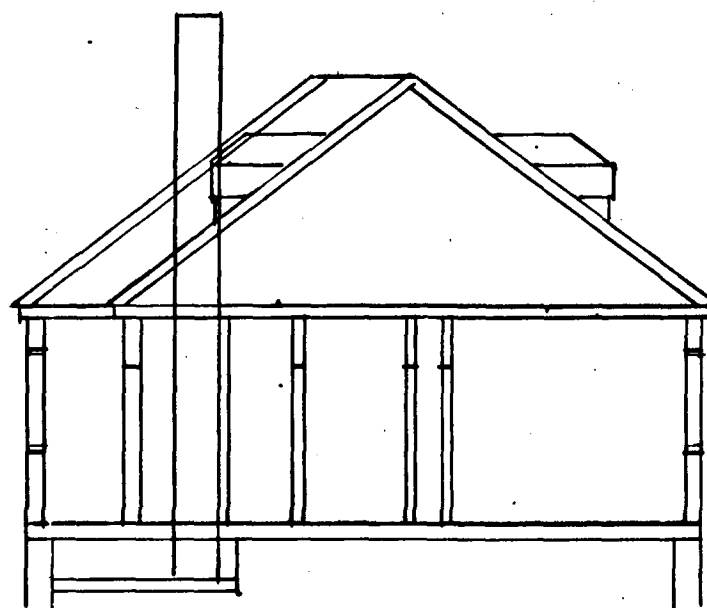
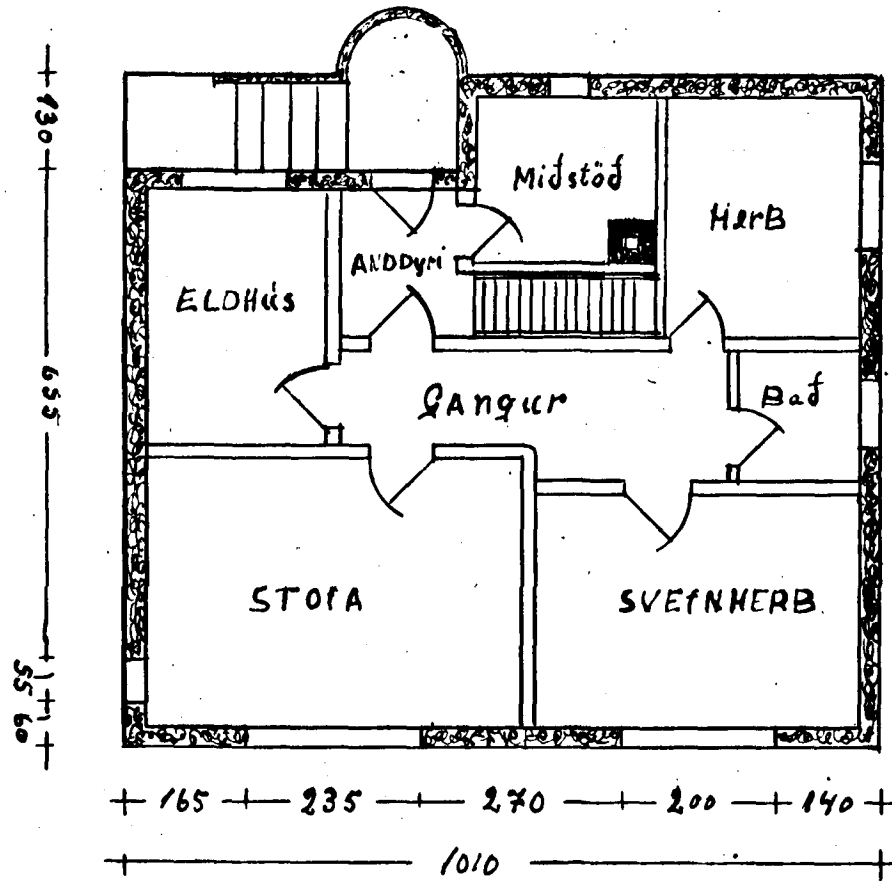
SÚÐURHLÍÐ



NORÐURHLÍÐ

M. 1:100

35
+ 80 + 140 + 110 + 80 + 125 + 10 + 390



175 + 230 + 170 + 415 + 95 +

Benedikt Björnsson
1/4.54