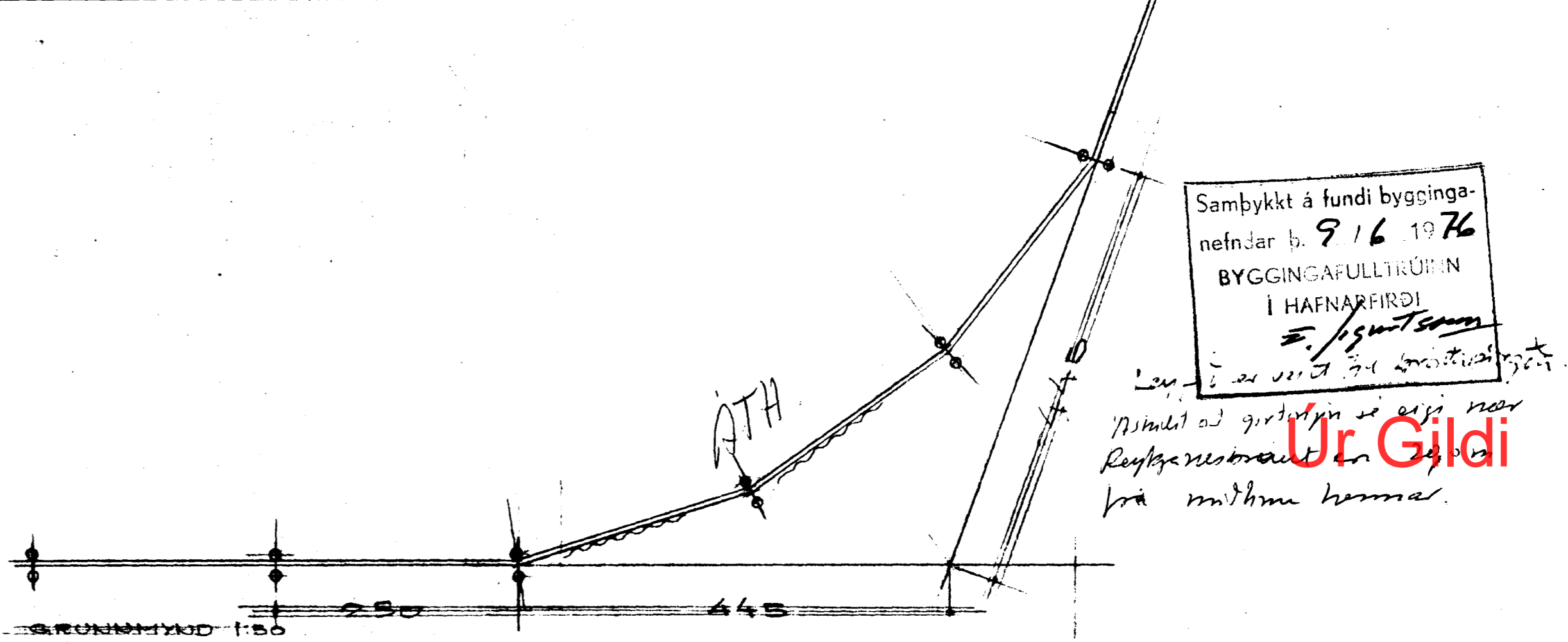
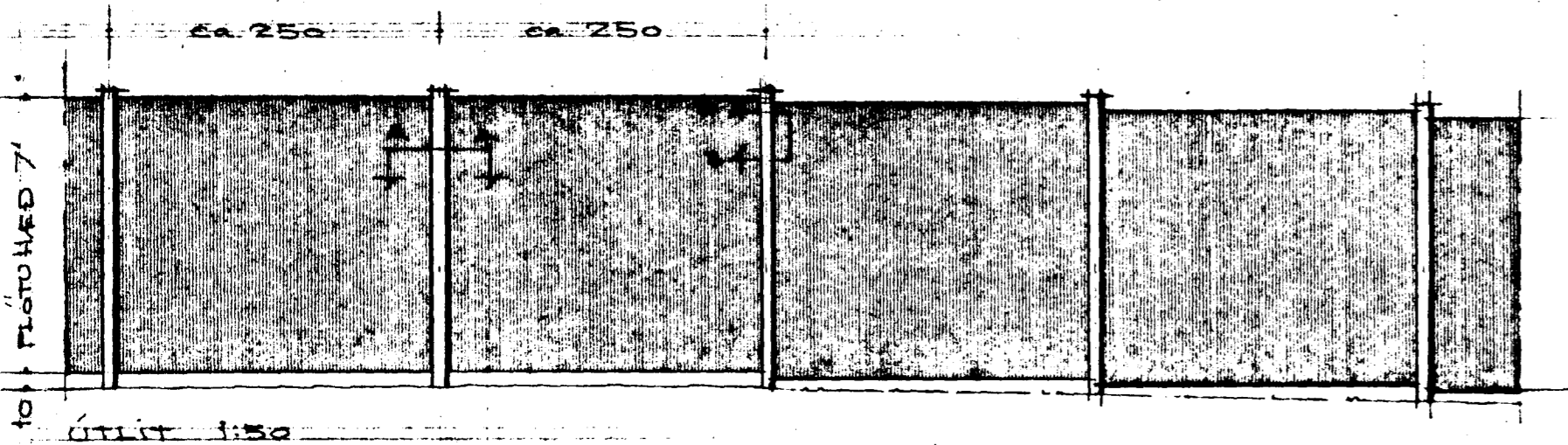


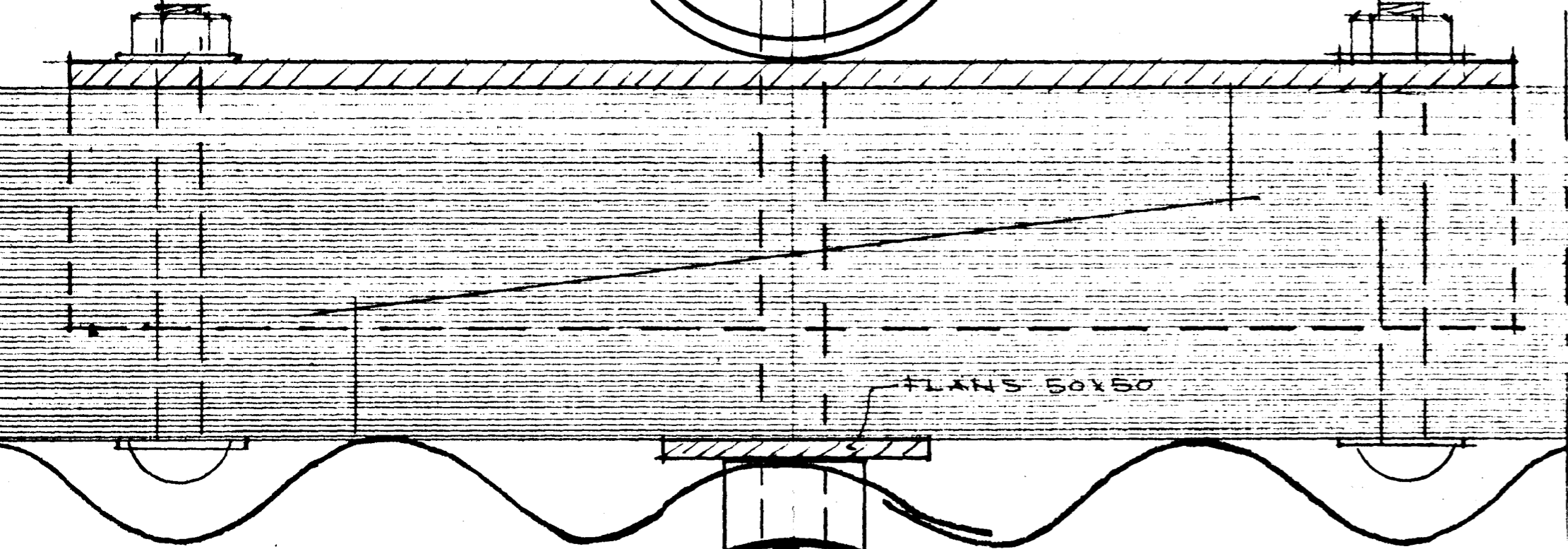
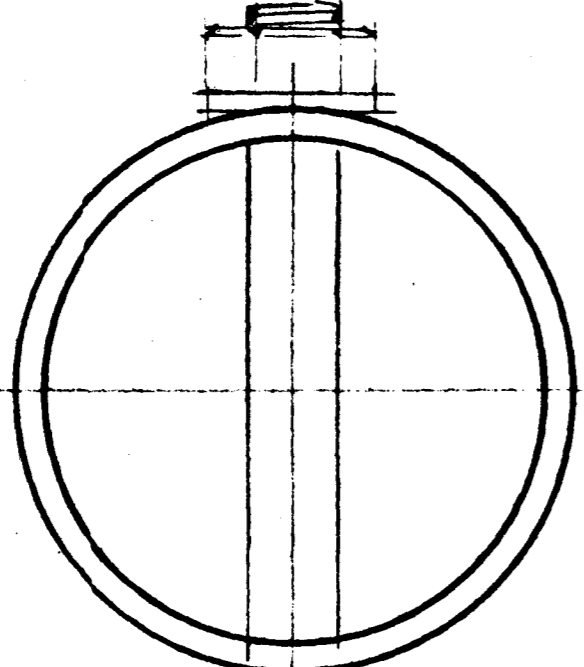
MILLIBIL Á STÖLPUM, MIÐIÐ  
VIÐ BÆRUR Á JÄRNI



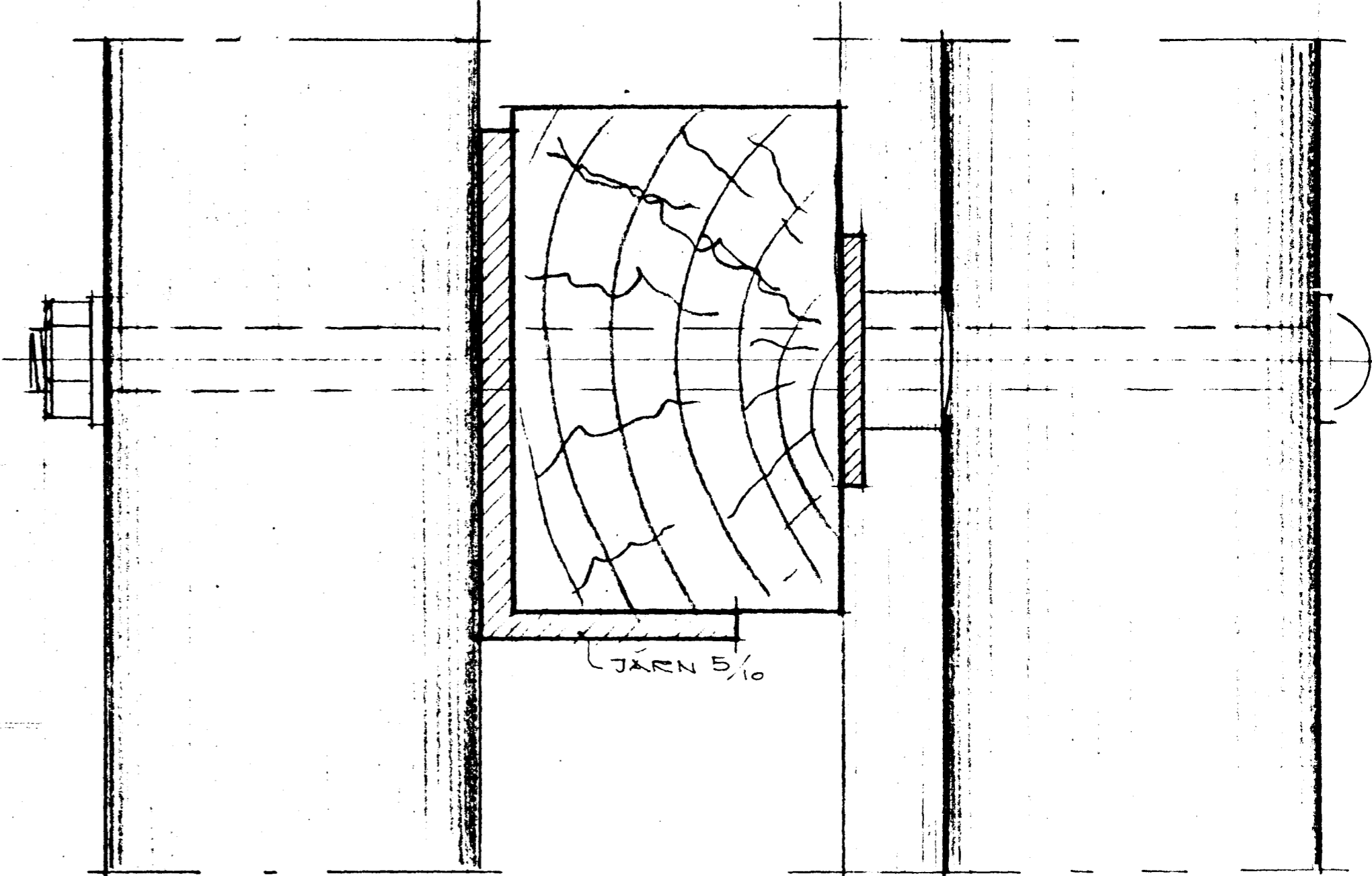
Samþykkt á fundi bygginga-  
nefndar þ. 9/6 1976  
BYGGINGAFULLTRÚÐIN  
Í HAFNARFIRÐI  
E. Jónsson

Ástundit að gættu sé eigi nær  
Reykjavík frá miðinu hennar.

Úr Gildi



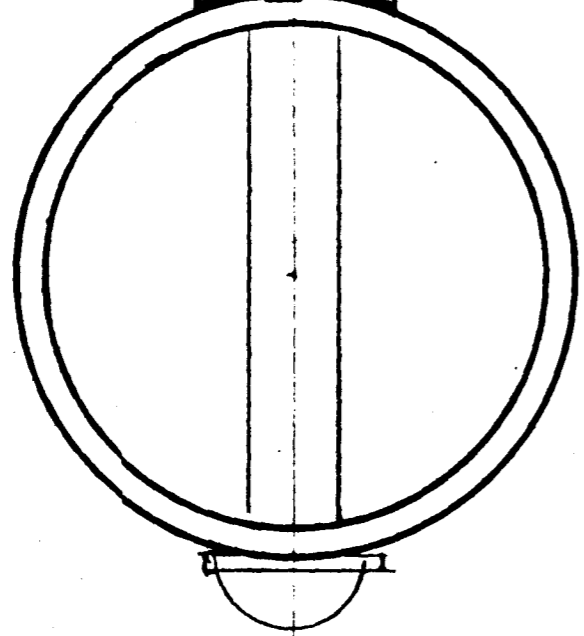
FLANS 50x50



JÄRN 5/10

SNID B-B 1:1

SNID A-A 1:1



FJÖLDI LANGBANDA, STAÐSETNING OG  
STERÐIR, SAMKV. FYRIRSÖGN VERKFR.

<b>TEIKNISTOFAN S.F. ÁRMÚLA 6</b>			
REYKJAVÍK			
GÍSLI HALDÓRSSON ARKITEKT JÓSEF REYNIS ARKITEKT			
MÁL: 1:50	VERKEFNI:	FIMLEIKAFÉLAG	
DAGS: 13-5-76		HAFNARFJÁRDAR	
TEIKN. NR.		GRINDVERK	
TEIKNAD AF: E. Jónsson	BREYTT:		
SAMP.			