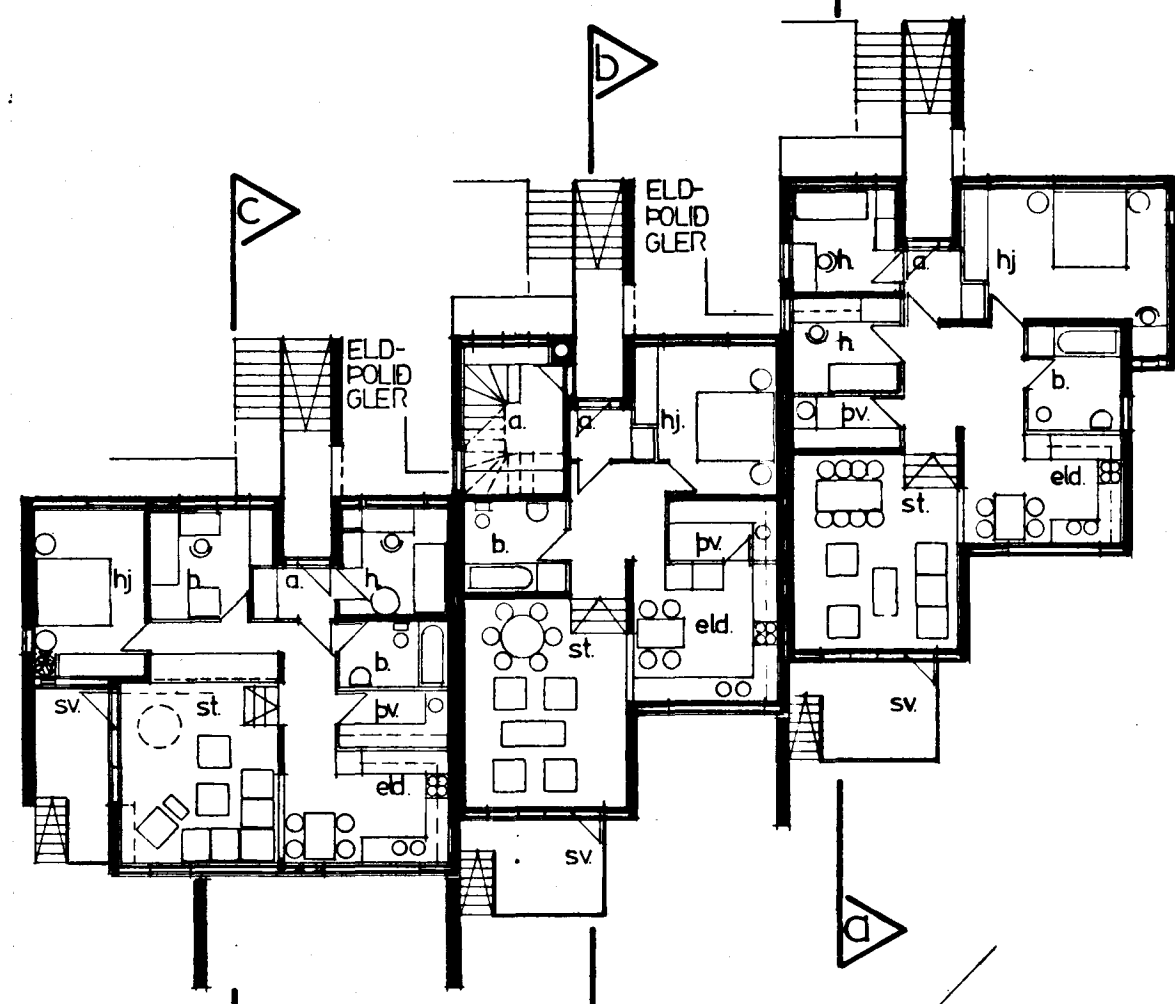
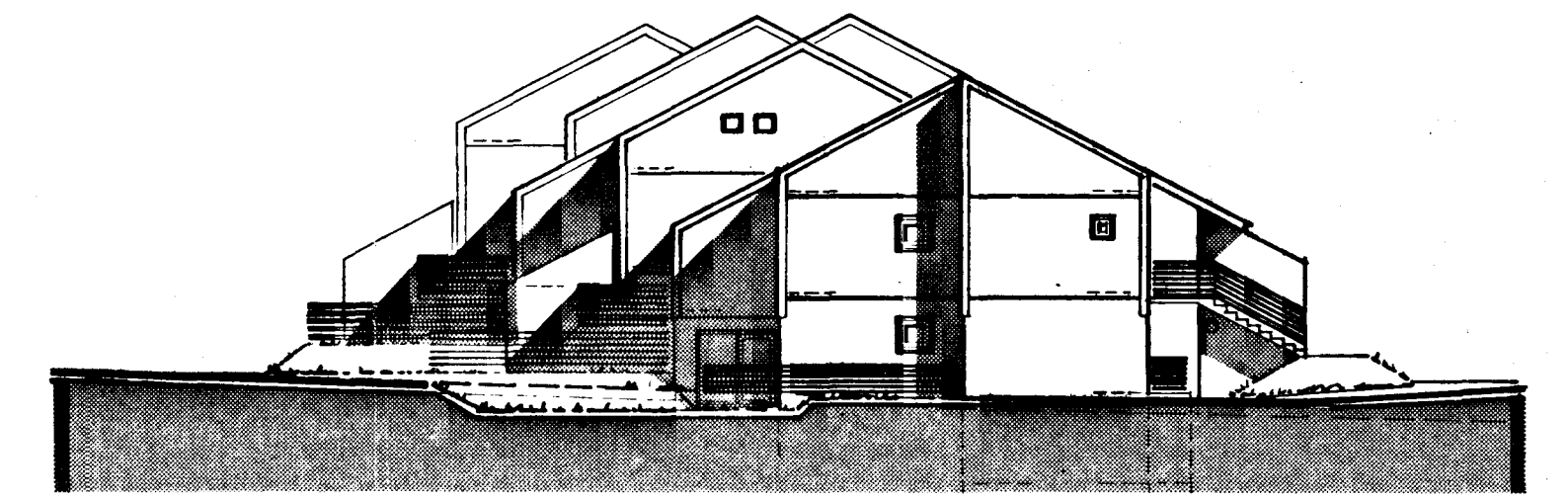
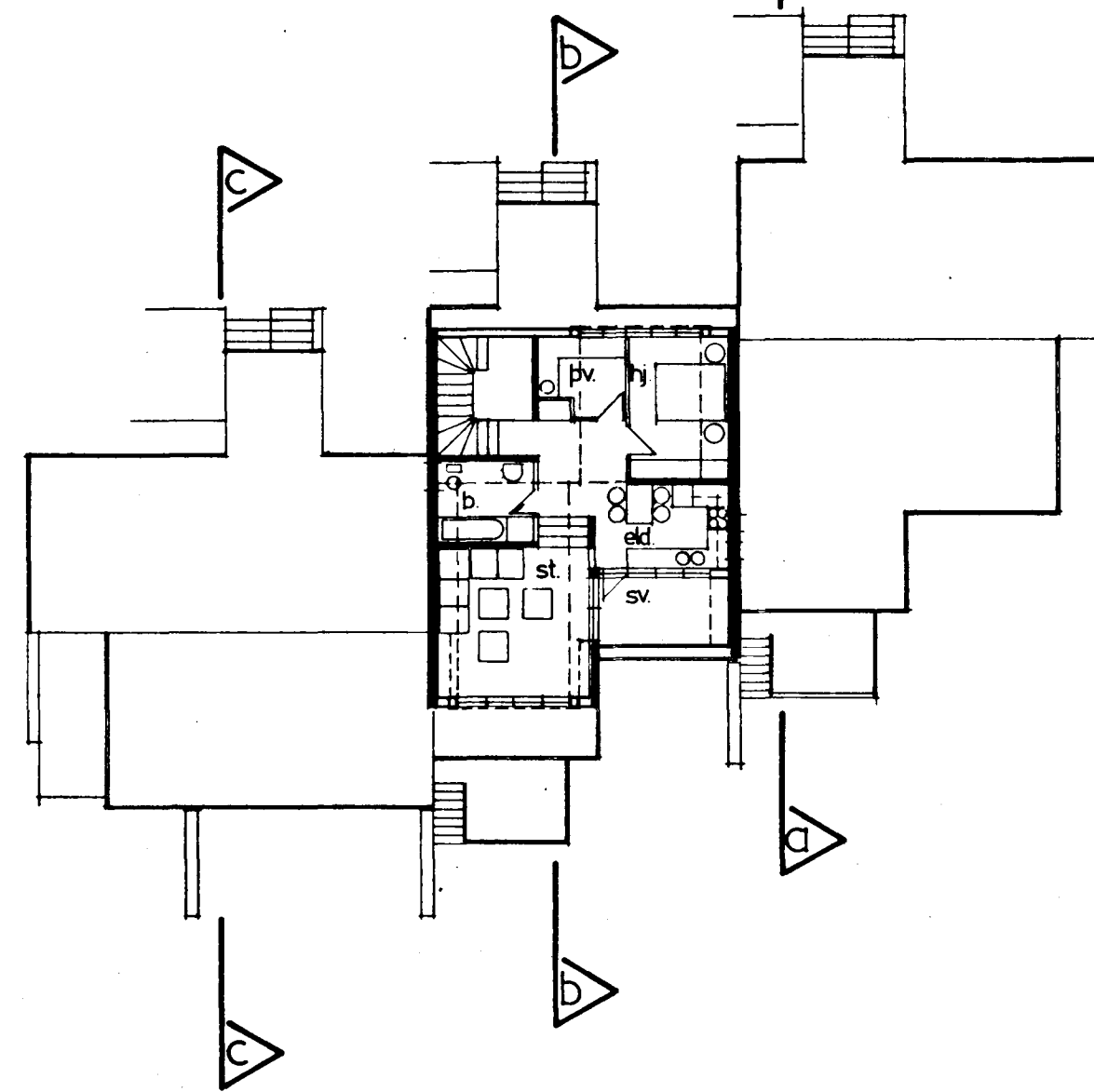


2. HÆÐ



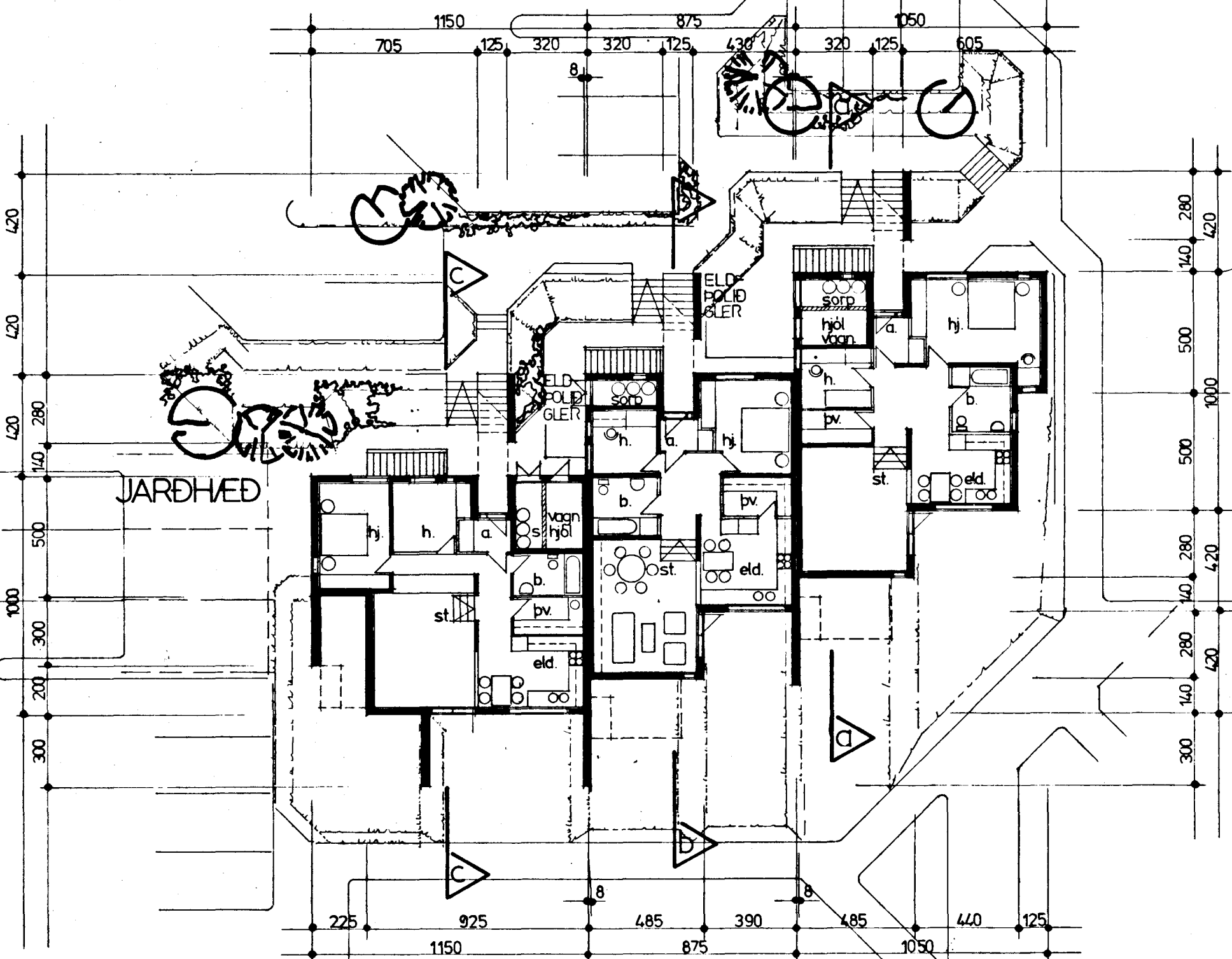
RISHÆÐ



súð-austur

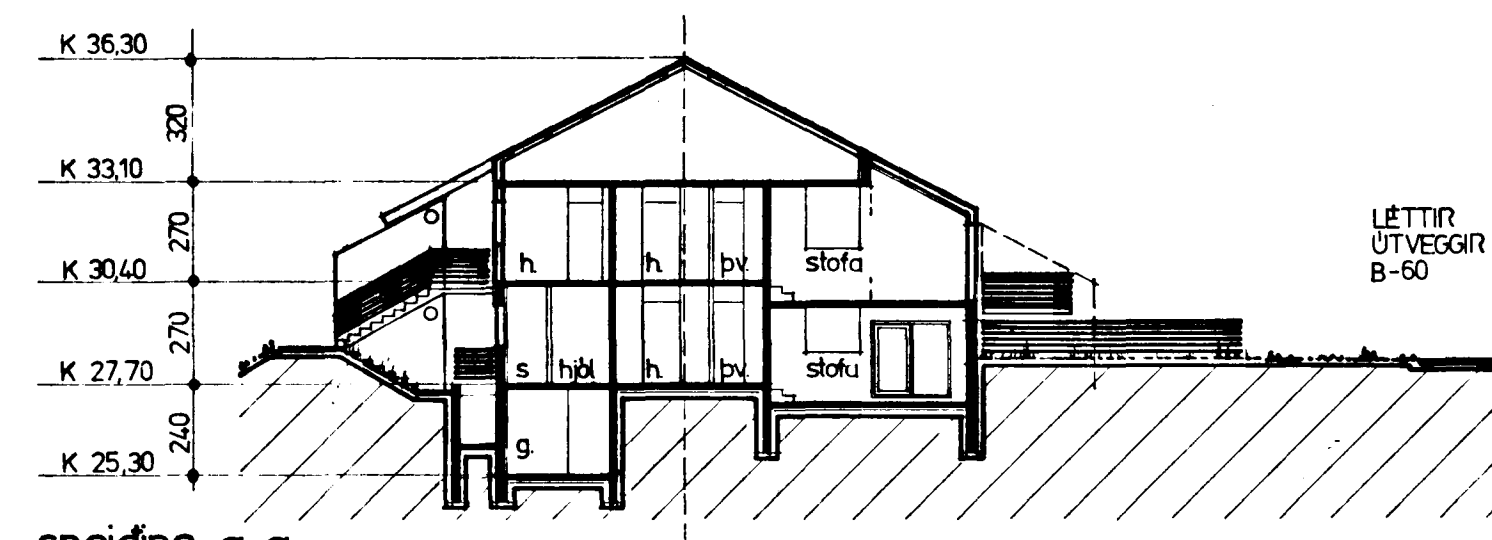
4 N 96.0 m<sup>2</sup> BR 124.0 (14)    2 N 83.0 m<sup>2</sup> BR 104.8 (4)    4 N 105.0 m<sup>2</sup> BR 134.0 (9)

2 N 64.5 m<sup>2</sup> BR 99.0



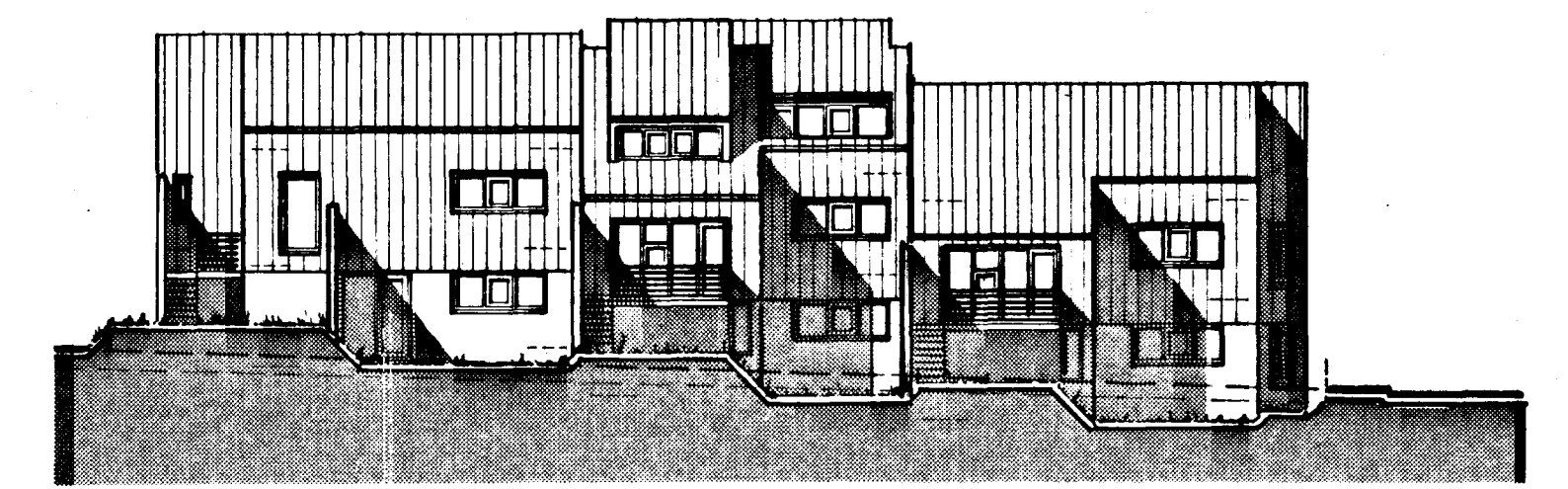
JARDHÆÐ

3 N 87.0 m<sup>2</sup> BR 114.0 (13)    3 N 92.0 m<sup>2</sup> BR 114.0 (2)    3 N 100.0 m<sup>2</sup> BR 123.0 (8)

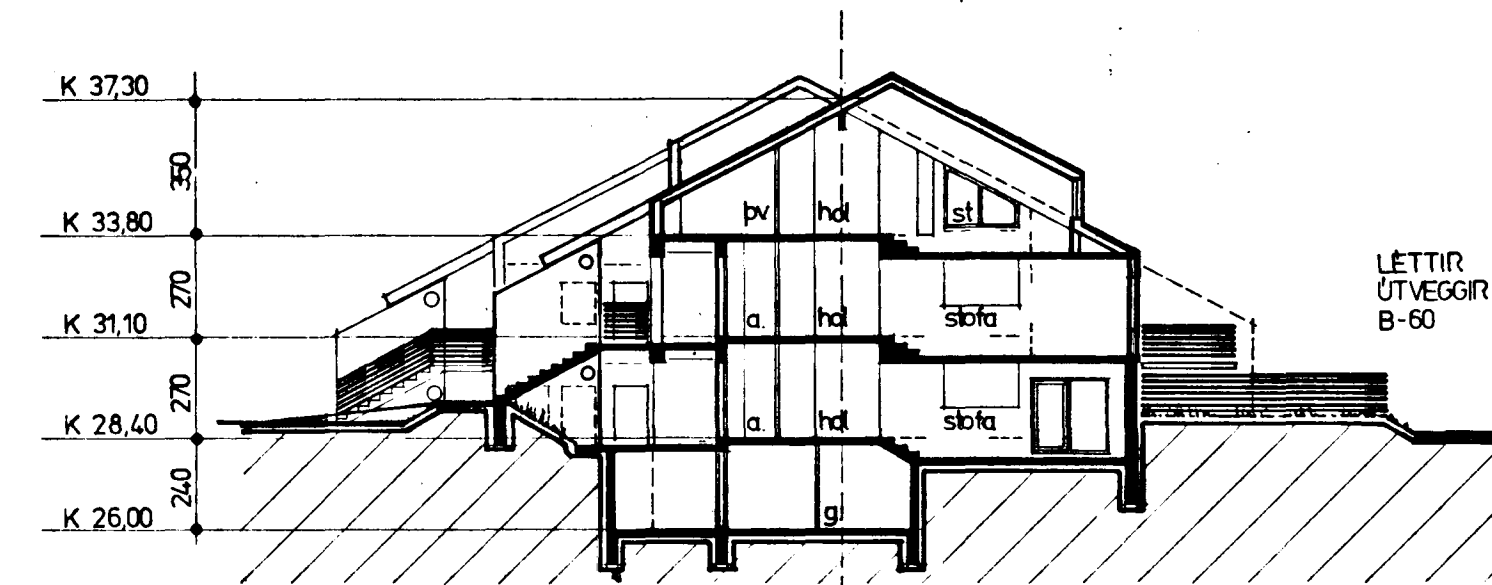


sneiðing a-a

LETTIR ÚTVEGGIR B-60

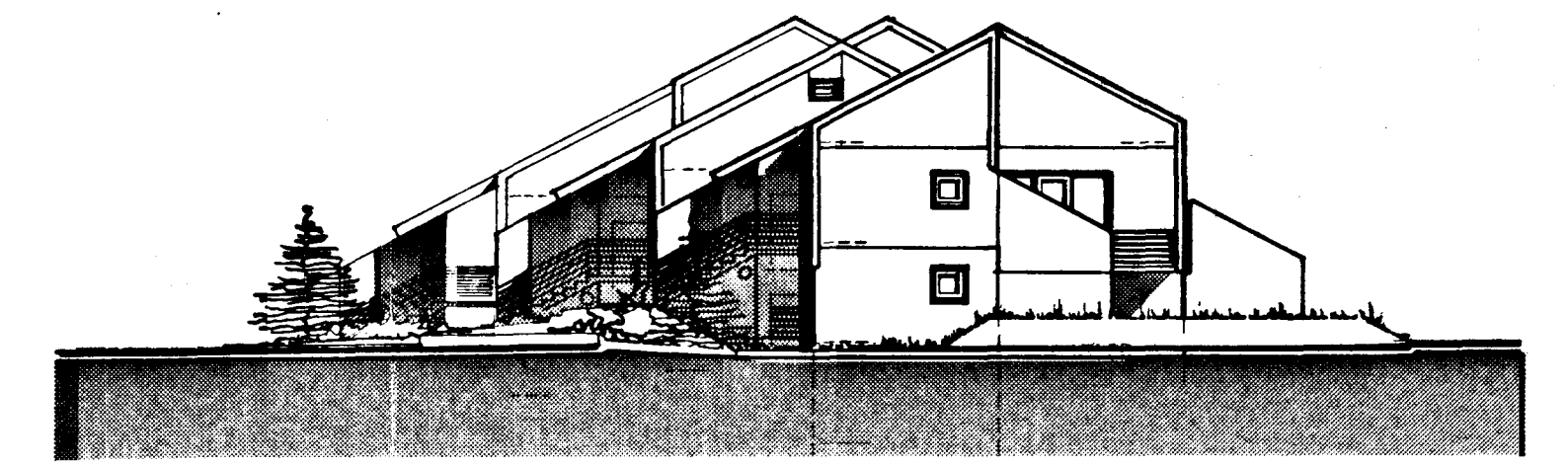


súð-vestur



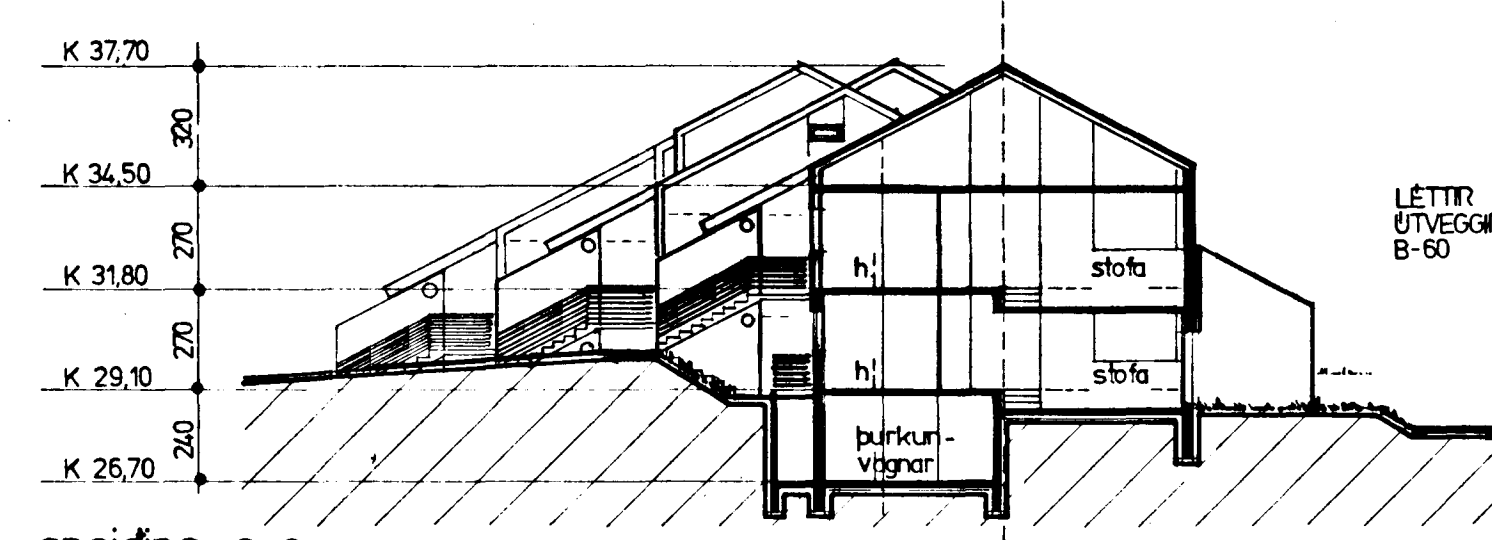
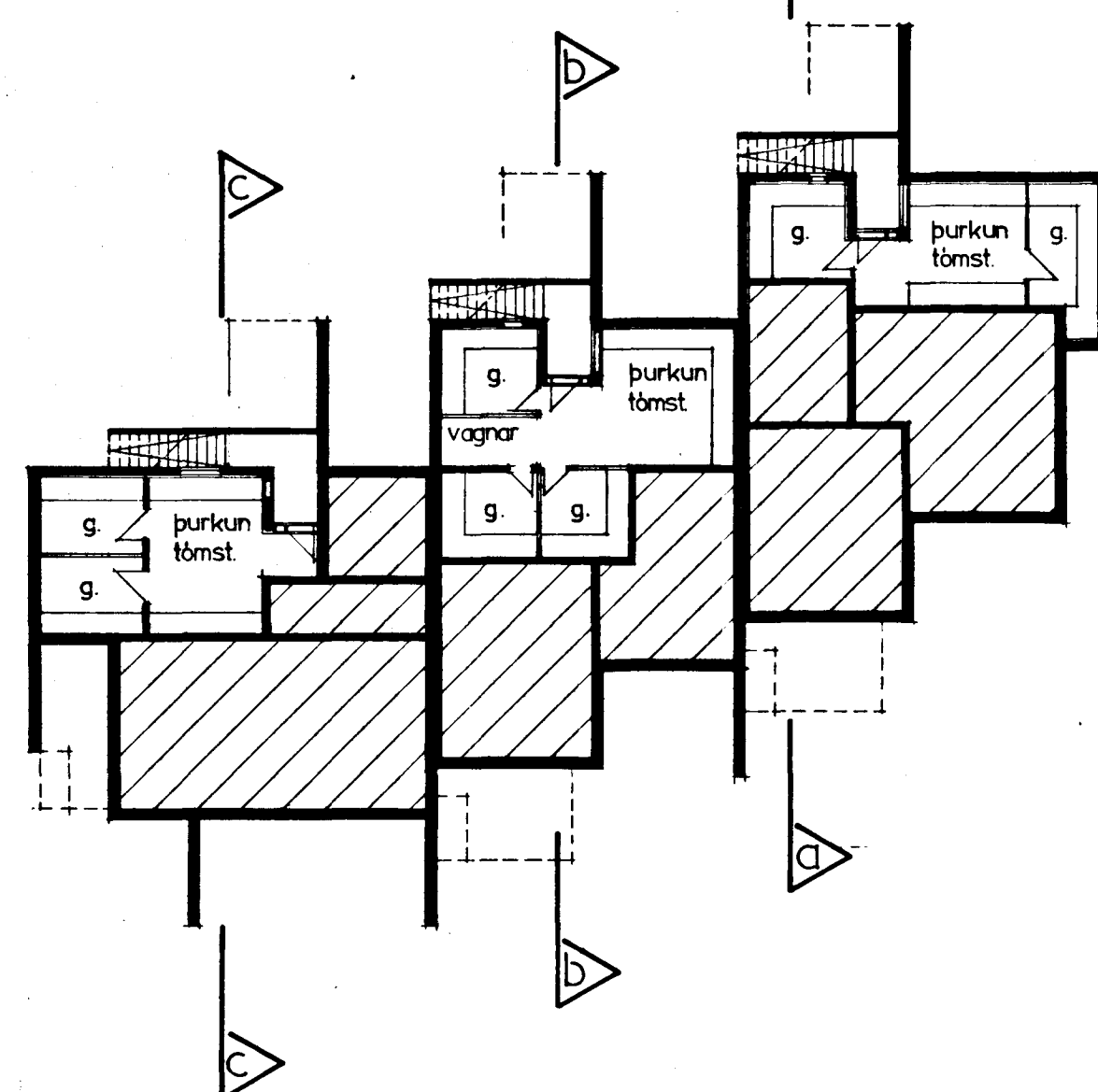
sneiðing b-b

LETTIR ÚTVEGGIR B-60



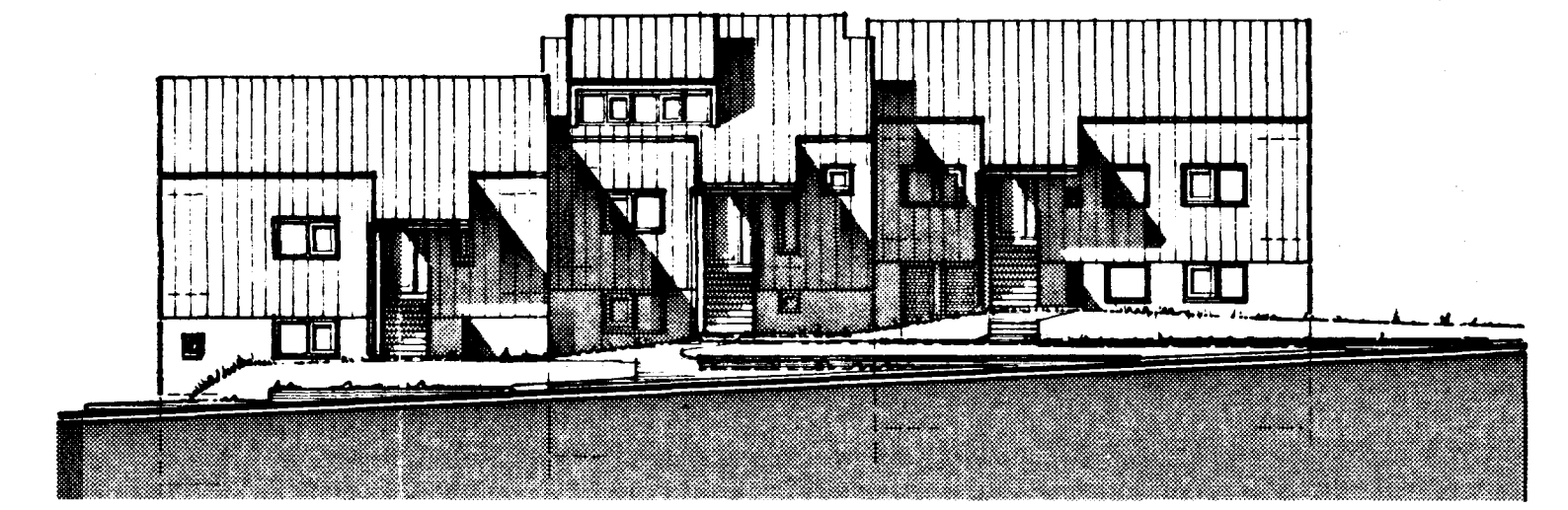
nord-vestur

KJALLARI



sneiðing c-c

LETTIR ÚTVEGGIR B-60



nord-austur

SAMÞYKKT 0603 1984  
SBR-BRÉF DAGS. 19  
BRUNAMÁLASTOFNUN PIKISINS

004

IBÚÐIR VIÐ KELDUHVAMM-PÚFUBARÐ

HÚS NR. 2 GERÐ B

GRUNNMYNDR, SNEIDINGAR, ÚTLIT, M 1:200

12.12.'83

HÖNNUN: BJÖRN S HALLSSON STRANDGÖTU 11 54660