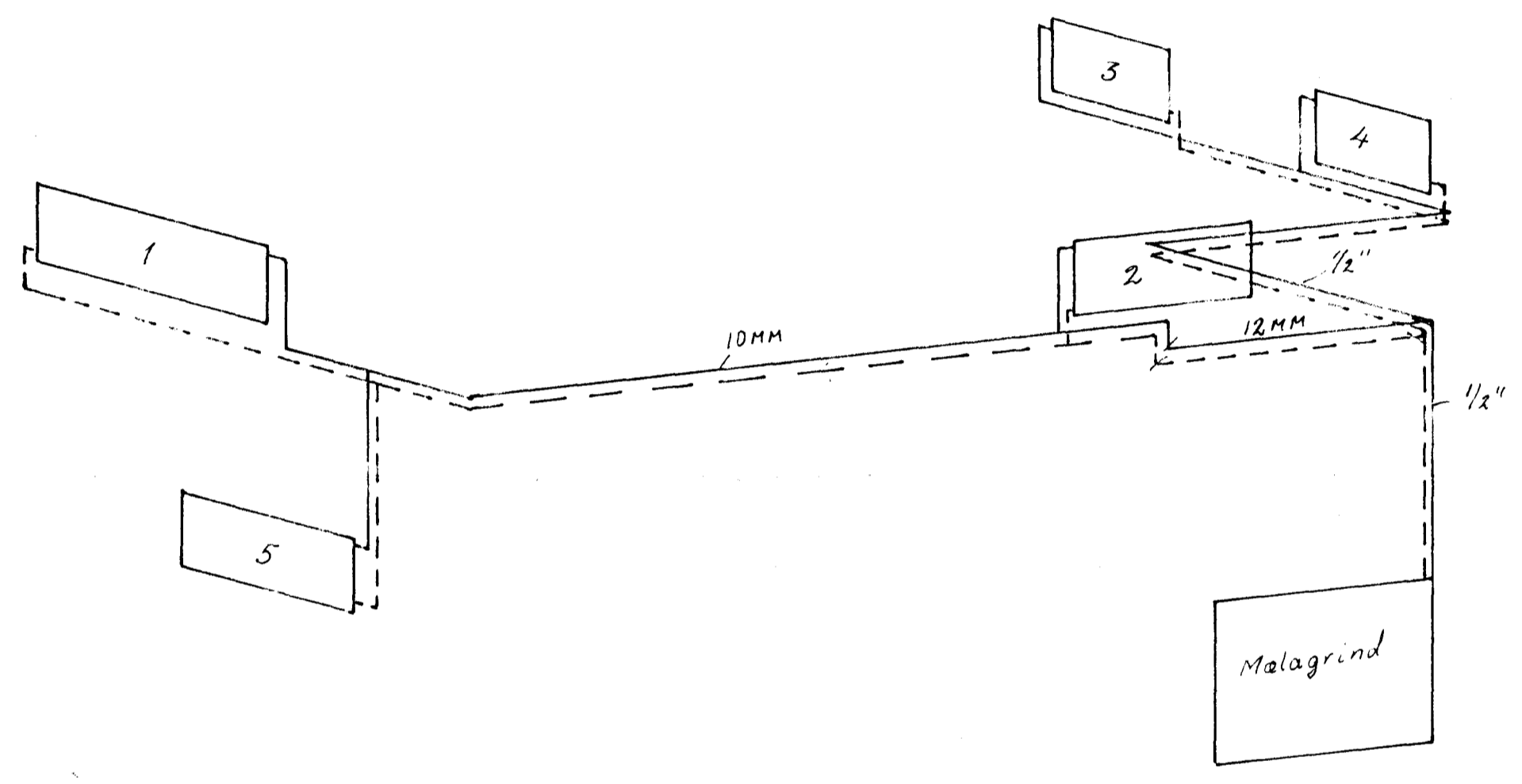
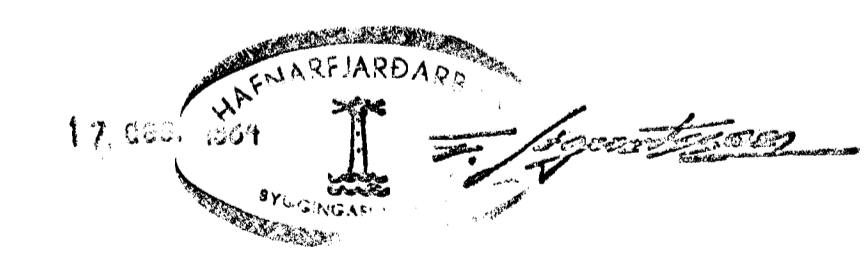


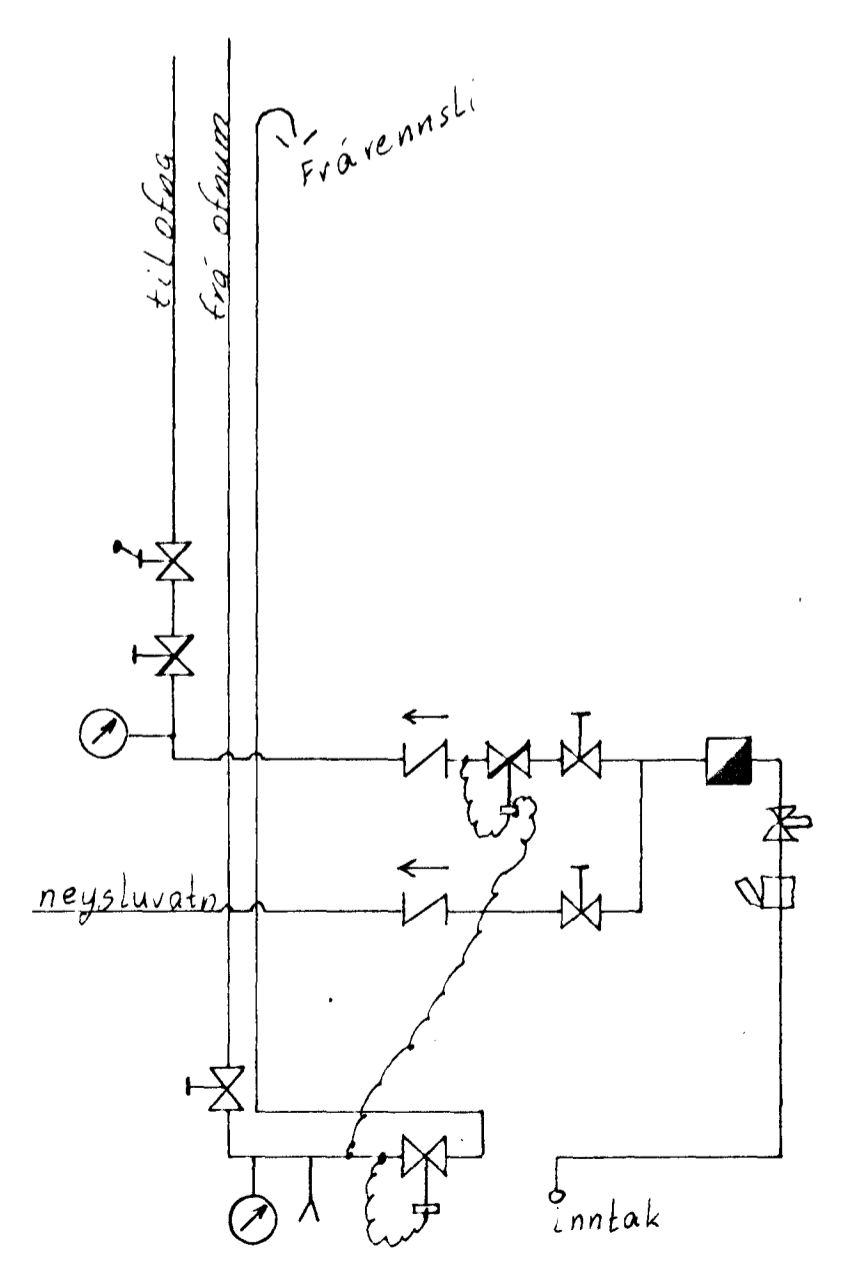
Eldri lagn 1/2" galv. vor einangrud og vafin lögð eftir staðli.
 Nýrri lagn utani-liggjandi úr eir 10MM og 12MM



Ofn nr.	staðsetning	KCAL	staðs stúta
1	Stofa	1600	A-D
2	Eldhús	1000	C-D
3	Salerni	600	A-D
4	Forstofa	600	A-D
5	Kjallari	1200	A-B



Malagrind (malikvarti öskv)



- Vatnsmálir
- ⊗ Renn-loki
- ⊗ Þrjústíjafnari
- ⊗ Einstefnuloki
- ⊙ Hitamálir
- ⊗ Öryggisloki
- ⊗ Dren
- ⊗ Hemill
- ⊗ Sia

Kirkjuvegur 13	Mk.	16.12.1984
	1:40	Mát Sveinbj
Öfna teikning.	Teikn. nr.	