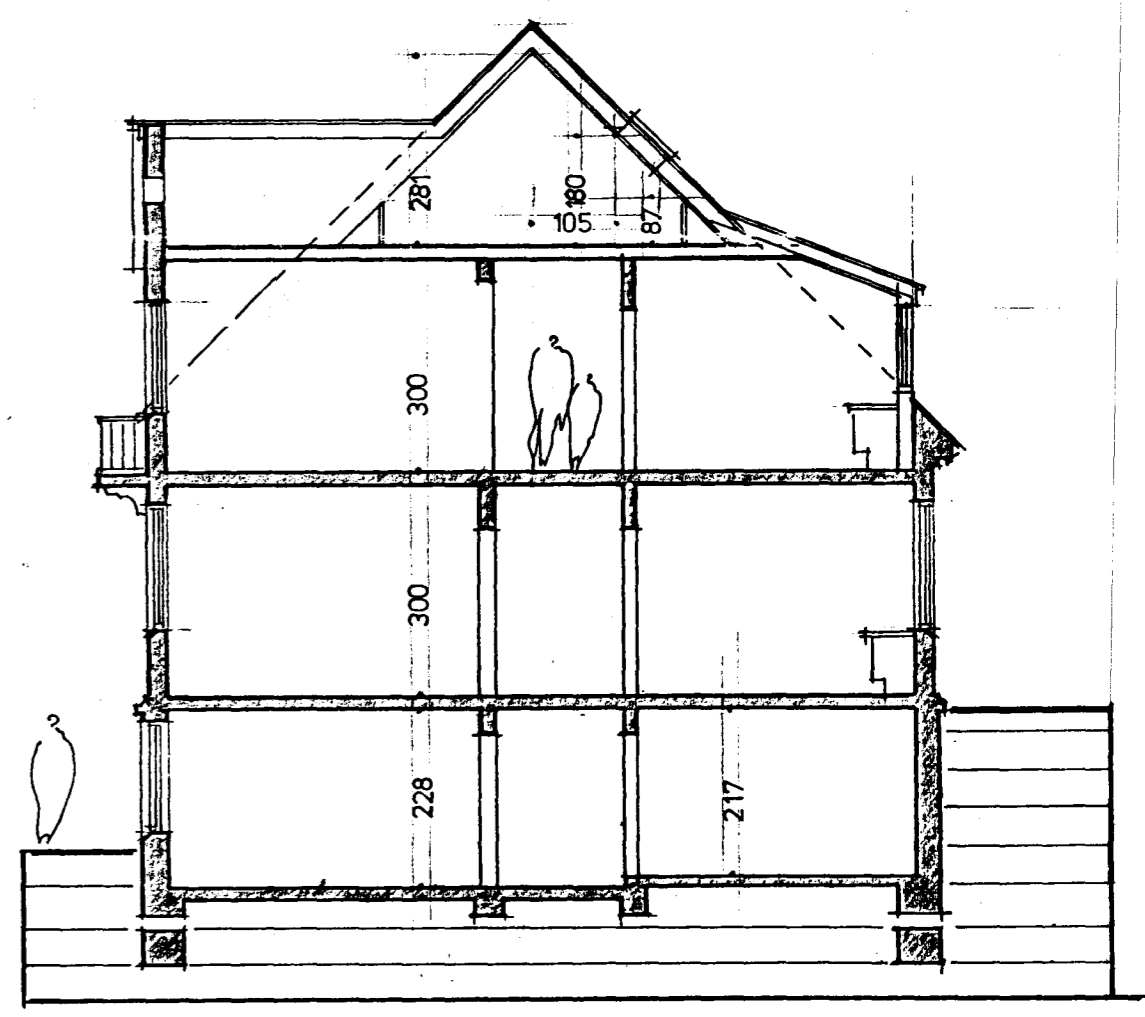
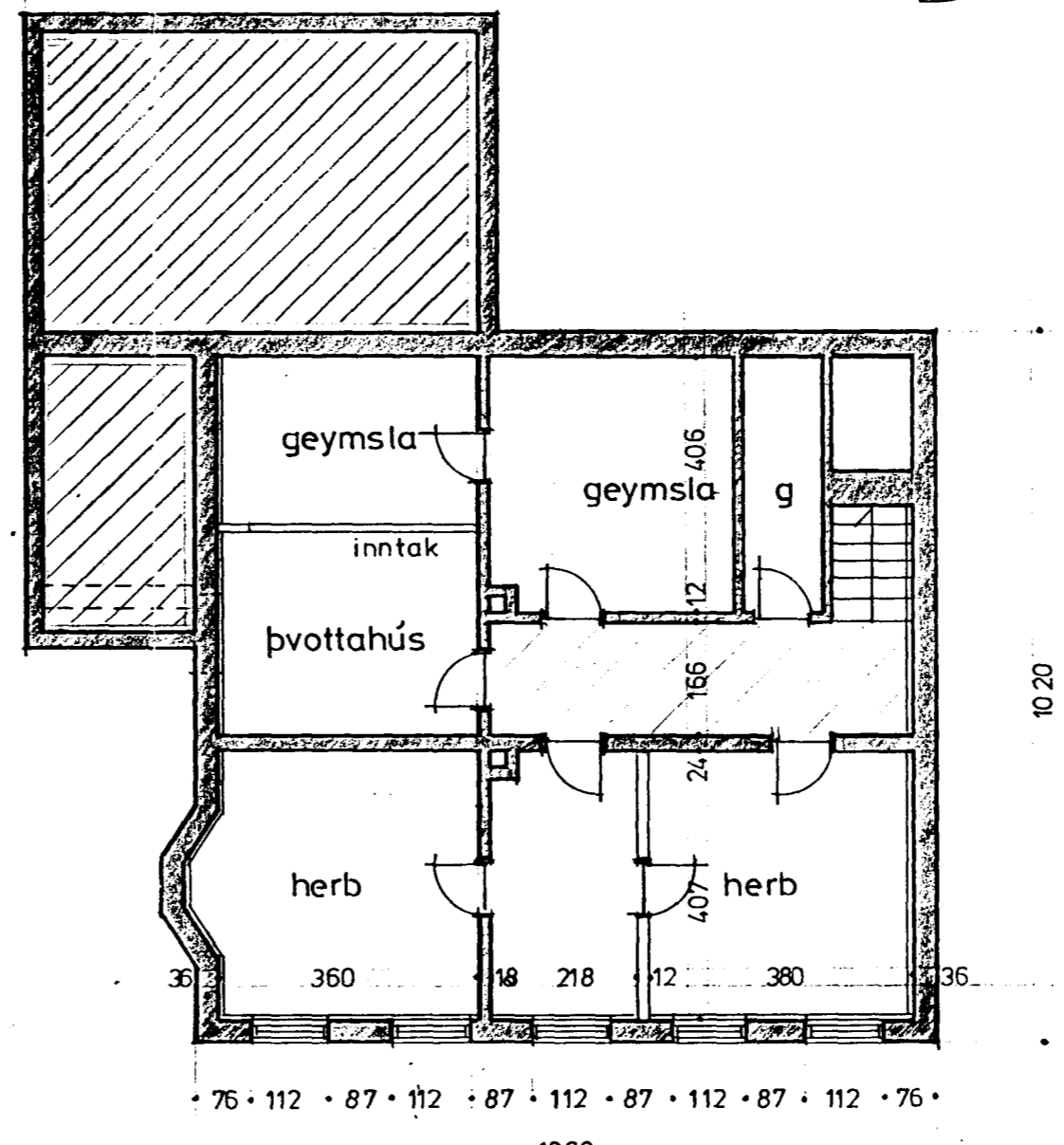
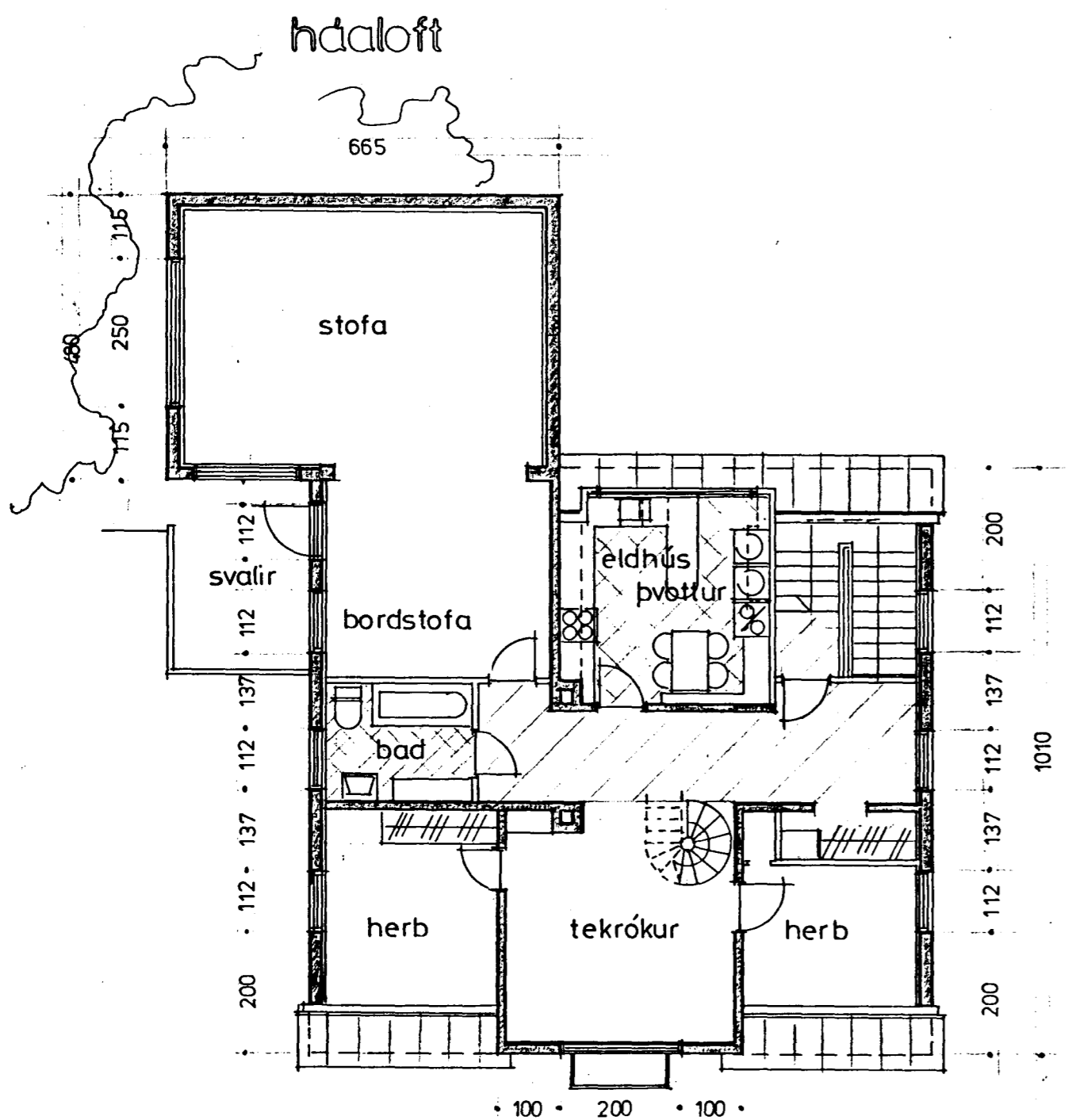
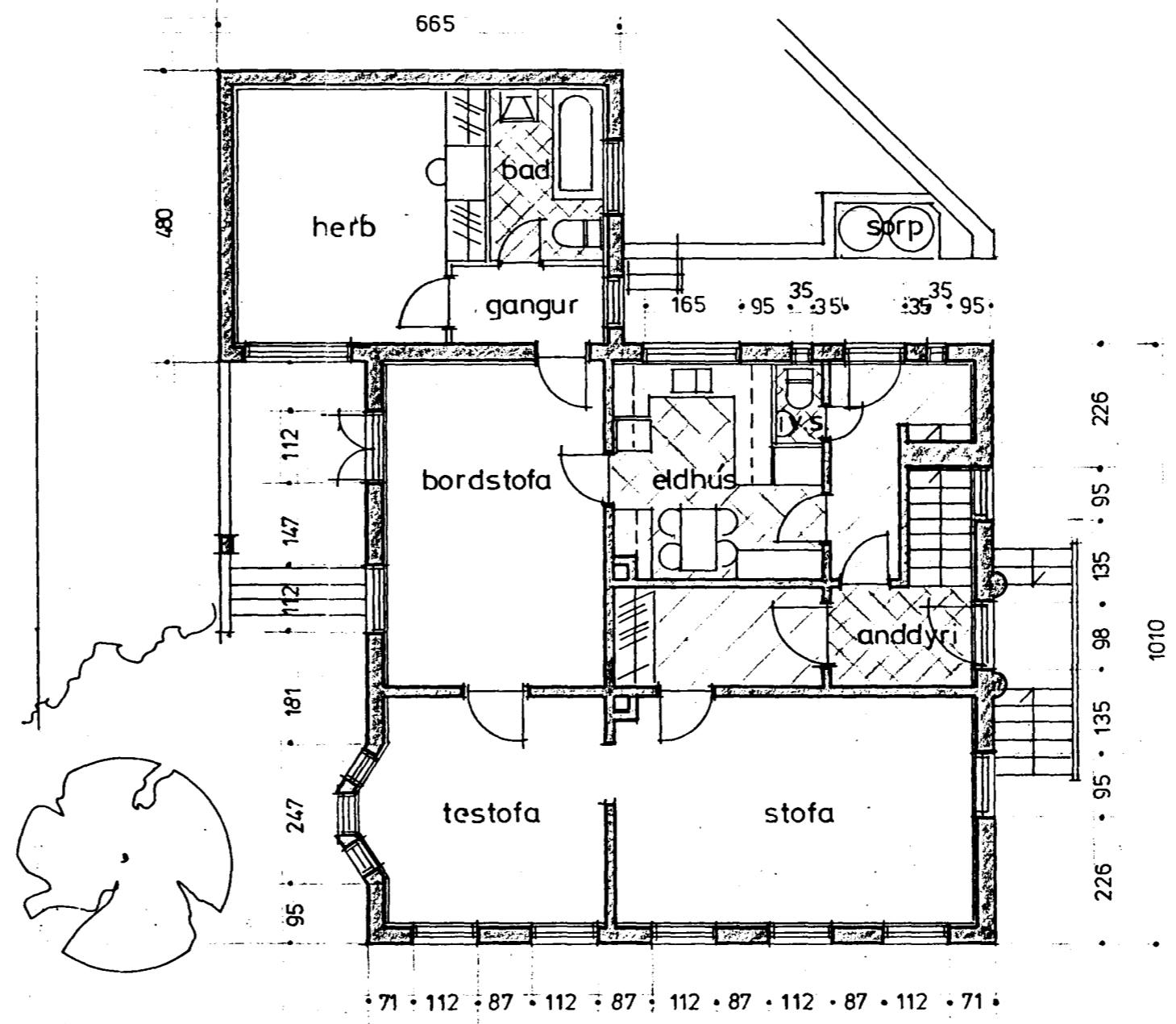
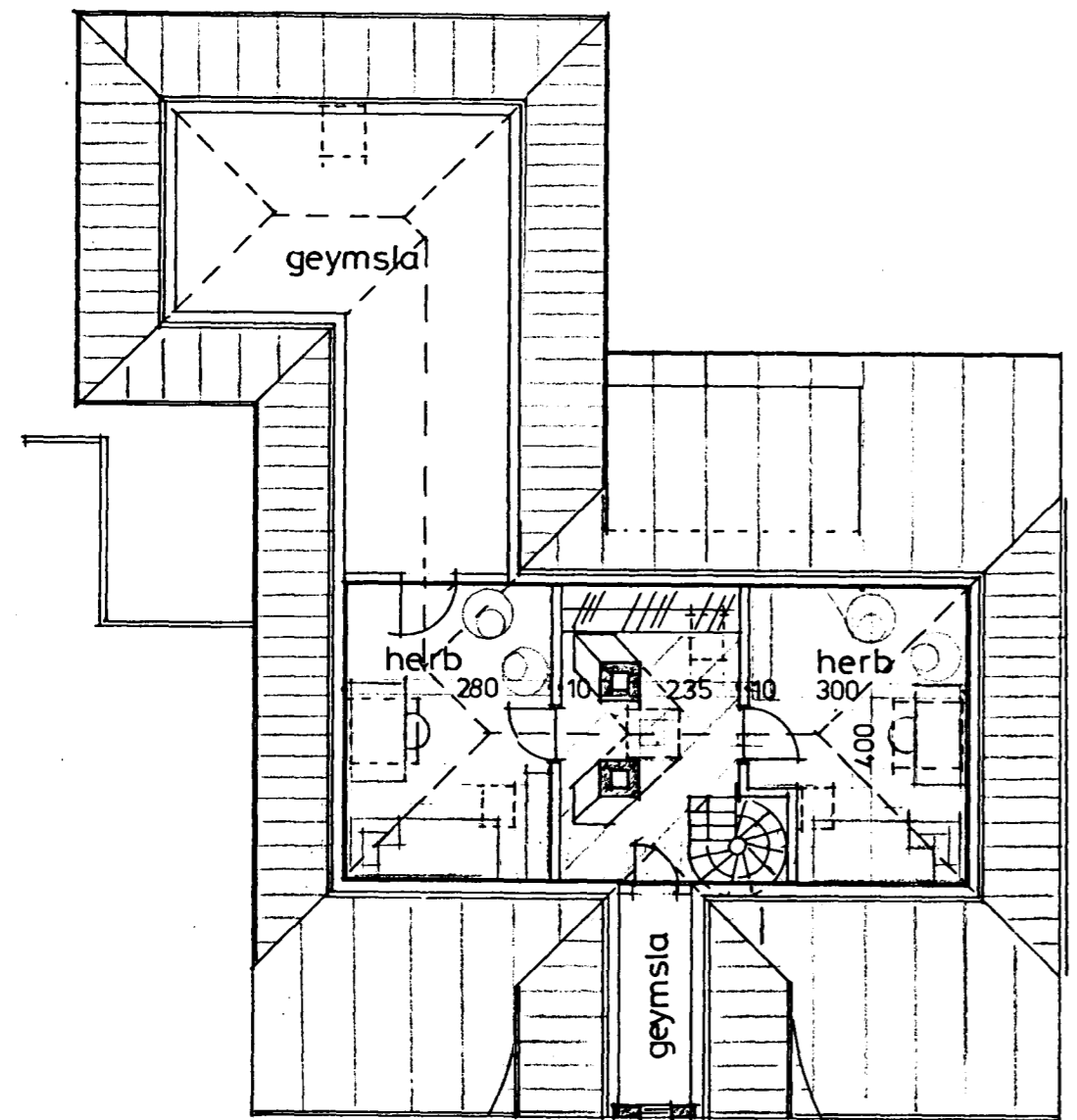


Samþykkt á fundi bygginga-  
nefndar þ. 17/10 1990  
BYGGINGA- og ELDLITRÚINN  
Þórh. Jónsson



sneiding  
stærdir

kjallari	108 m <sup>2</sup>
1. hæð	137 m <sup>2</sup>
2. hæð	128 m <sup>2</sup>
háaloft	33 m <sup>2</sup>
porthæð 180 13 m <sup>2</sup>	
rúmmál hússins	1104 m <sup>3</sup>

*Bjarni Snæbjörnsson*  
Bjarni snæbjörnsson arkitekt f.a.l. s 53266

grunnmyndir 04. 10. '90. 1:100 kirkjuvegur 5