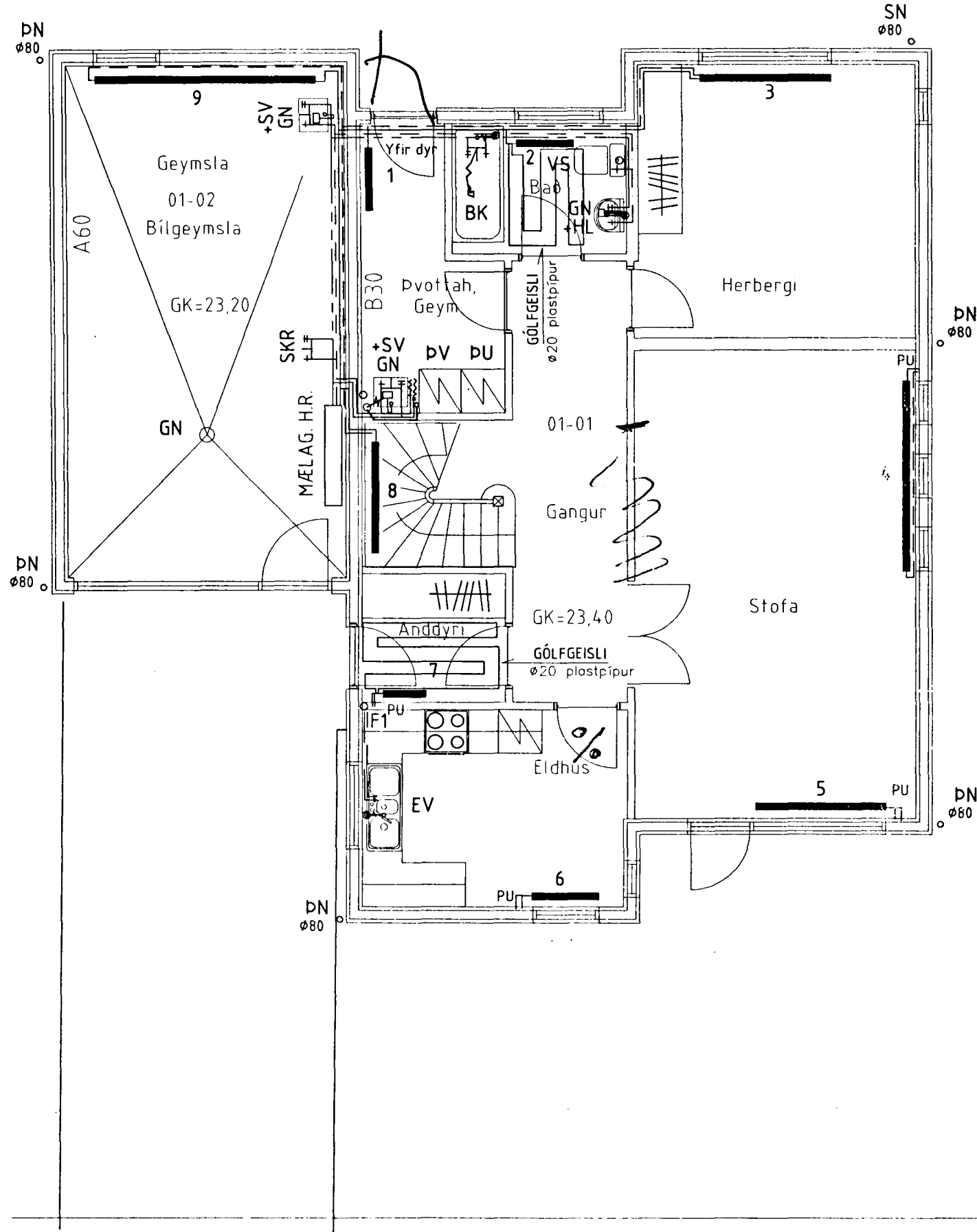


1. HÆÐ

*hokaeffek*

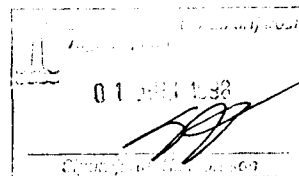


**Ofnaskrá Kjóahraun 4** dT=40 °C

Ofn nr.	Valdir ofnar Stelrad panelofnar	Afköst Kcal/h	Tenging $\varnothing$ 10mm	Loki Danfoss	Stíllitala Iromlaka	Aths.
1	P11-600x1120	678	CD	FJVR		
2	P10-600x800	329	AB	FJVR		
3	P21-600x1600	1468	AB	RA2000	3,5	
4	P22-300x2080	1373	AD	RA2000	3	
5	P11-600x1440	871	AB	FJVR		
6	P22-500x800	793	CD	RA2000	2	
7	P11-800x480	370	CD	FJVR		
8	P21-600x1440	1146	CD	RA2000	2,5	
9	P22-600x2560	2919	CB	FJVR		
10	P11-800x480	370	AB	FJVR		
11	P21-600x800	733	AB	RA2000	2	
12	P22-600x800	912	AB	RA2000	2,5	
13	P22-600x800	912	CD	RA2000	2,5	
14	P11-800x480	370	AB	FJVR		
Samt.		13244				

P21-600x1600 merkir tvöfaldan panelöfn með 1 varmauka (konvektor), hæð=600 mm og lengd=1600 mm.

KJÓAHRAUN



I H G T D C B A				EINAR EINARSSON TÆKNIFRÆÐINGUR, STRANDGATA 2B, 3.HÆÐIN kennitala 1510504769, sími 5650788
				TEKNI NR. 302
				HANNAÐ EE
				TEKNIÐ EE
				YFIR. <i>Einar Einarsson</i>
DACS.	BREYTING	SAMT.	MRV. 1:50	DACS APRIL 1998