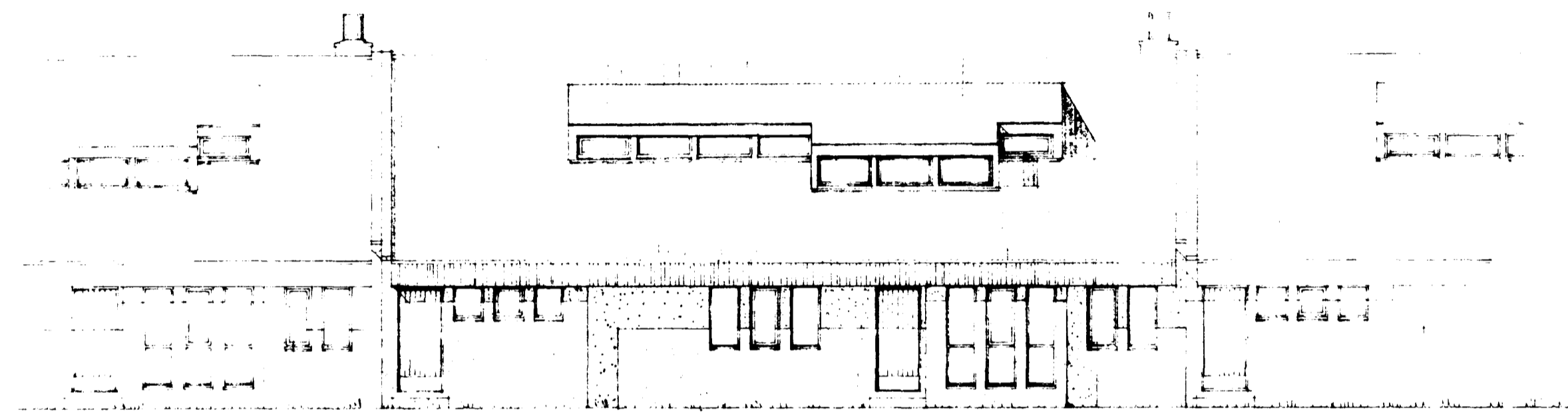
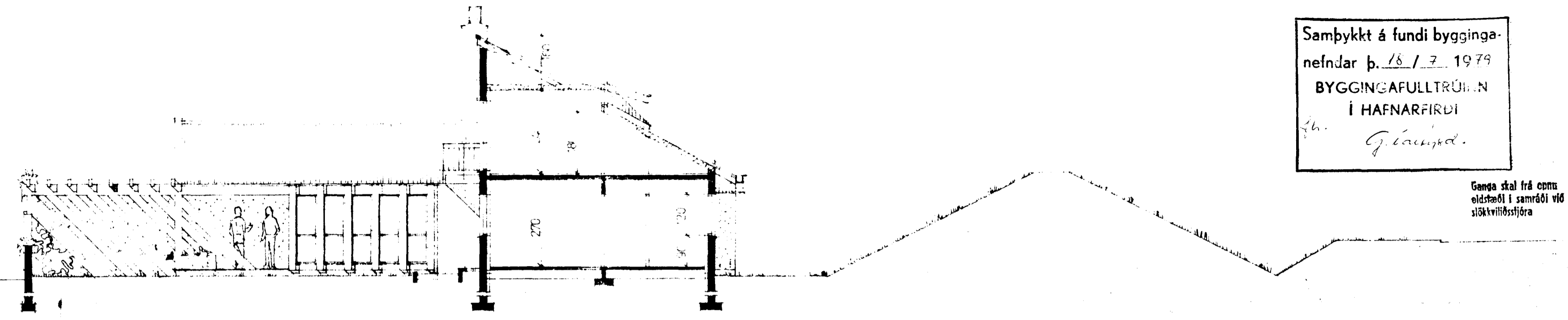


Samþykkt á fundi bygginga-
nefndar þ. 18. 7. 1979
BYGGINGAFULLTRÚÐIN
Í HAFNARFIRDI
G. Guðmund.

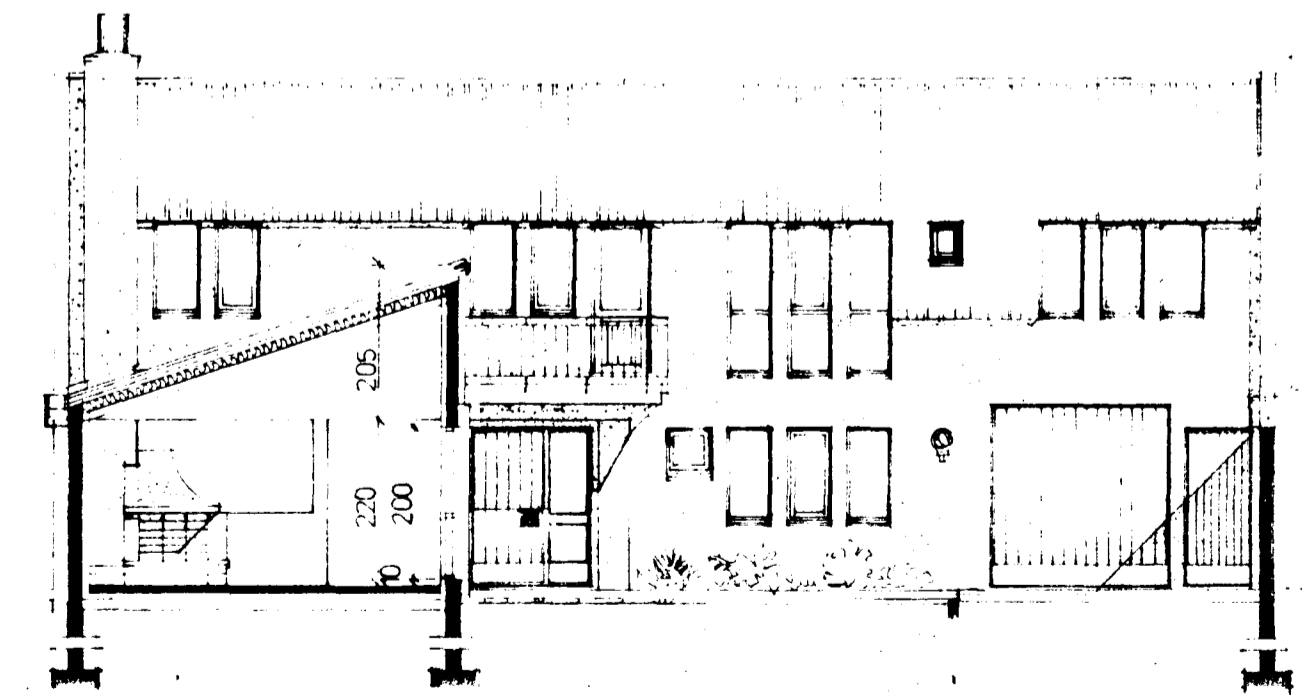
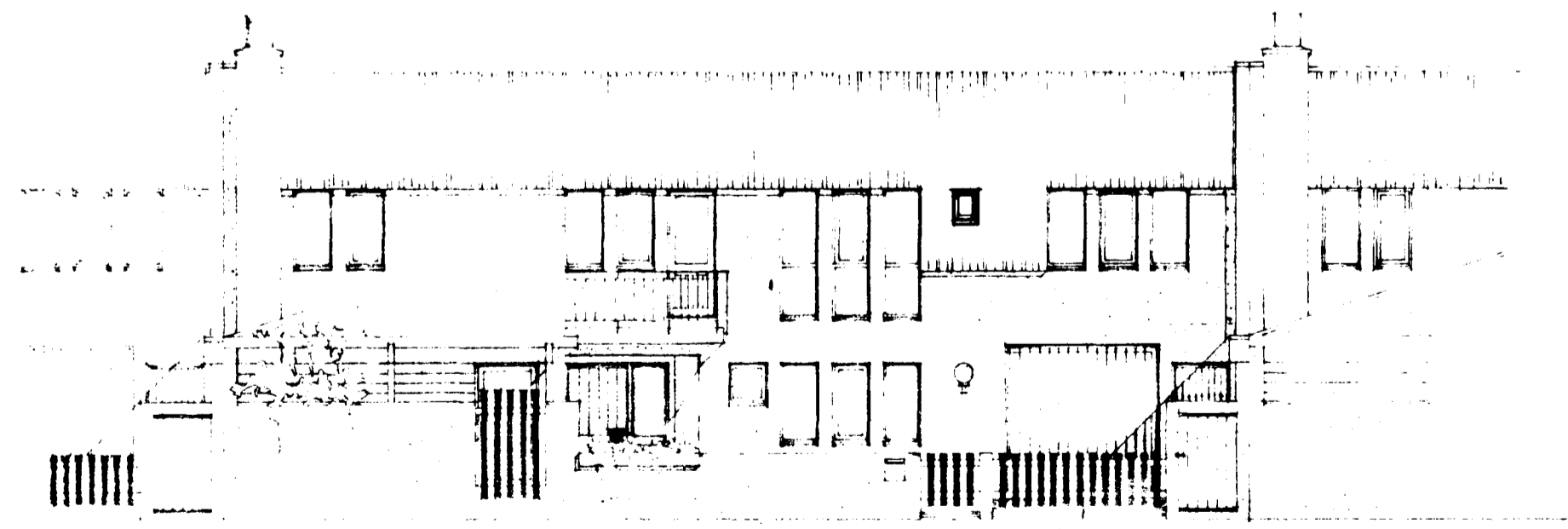
Ganga skal frá önnu
eldstaði í samráði við
sökkvillissjóra

SNÍÐ A-A · M 1:100



KVAÐIR VEGNA HLJÓÐEINANGRUNAR
15 c.m. STEINULLAREINANGRUN
Í PAKI.
PREFALT EINANGRUNARGLER Í
GLUGGUM AÐ REYKJANESBRAUT

HLÍÐ AÐ REYKJANESBRAUT



SNÍÐ B-B · M 1:100