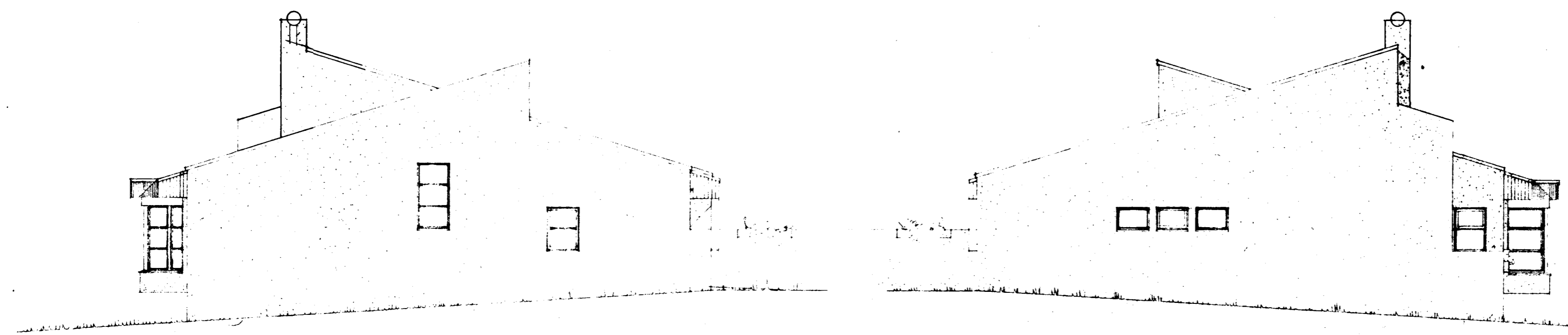
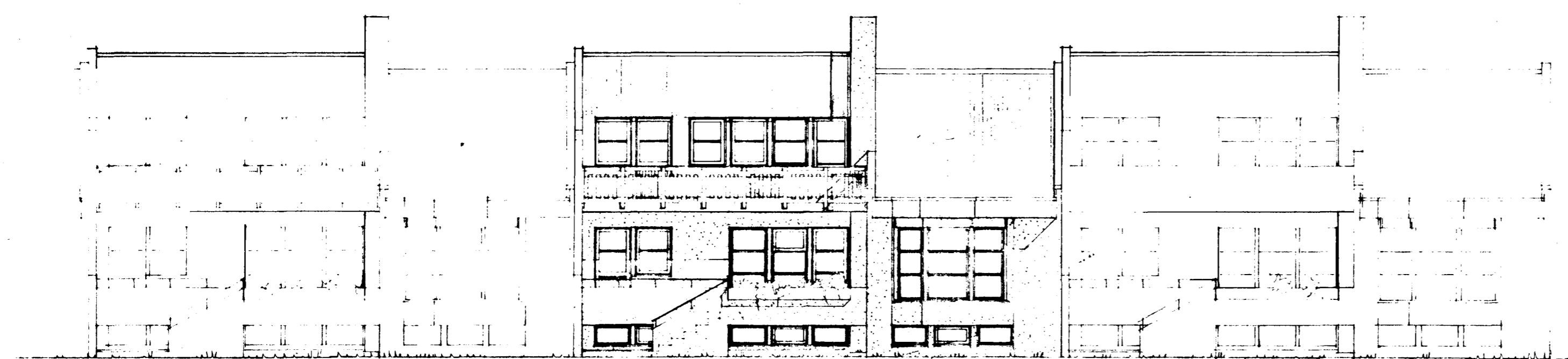
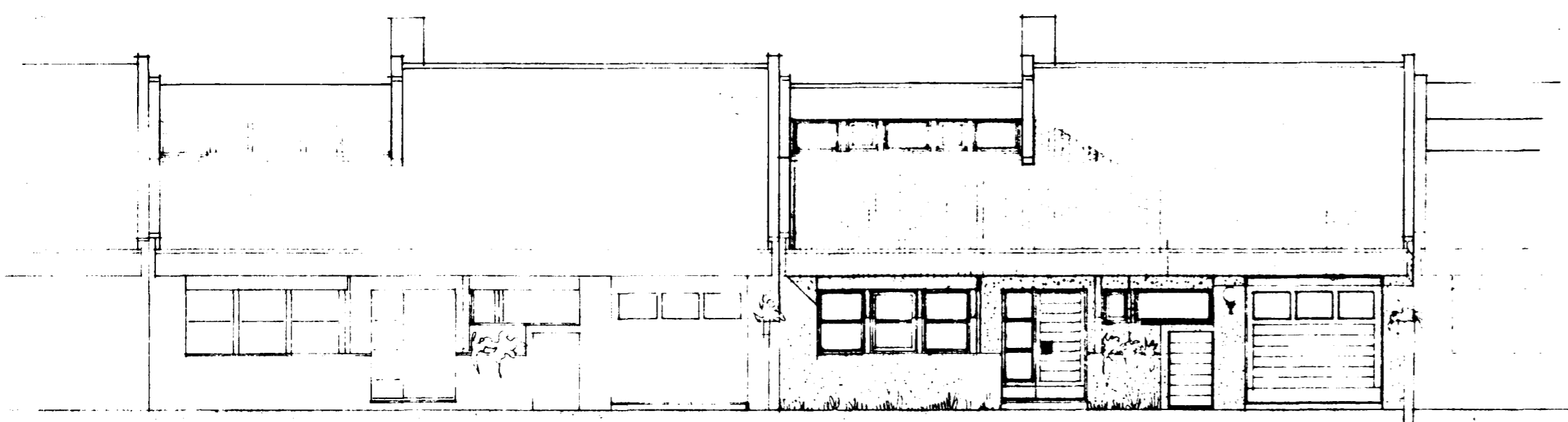


Samþykkt á fundi bygginga-
nefndar þ. 20/2 1980
BYGGINGAFULLTRÚINN
Í HAFNARFIRDI
[Signature]

Ganga skal frá opnu
eldstæði í samráði við
viðkvæmsstjóra



9

KLAUSTURHVAMMUR
NR 9-11-13-15-17-19

(B)

BREYTT 14.9.79

[Signature]

RAÐHÚS VÍÐ KLAUSTURHVAMM, HAFNARÉ