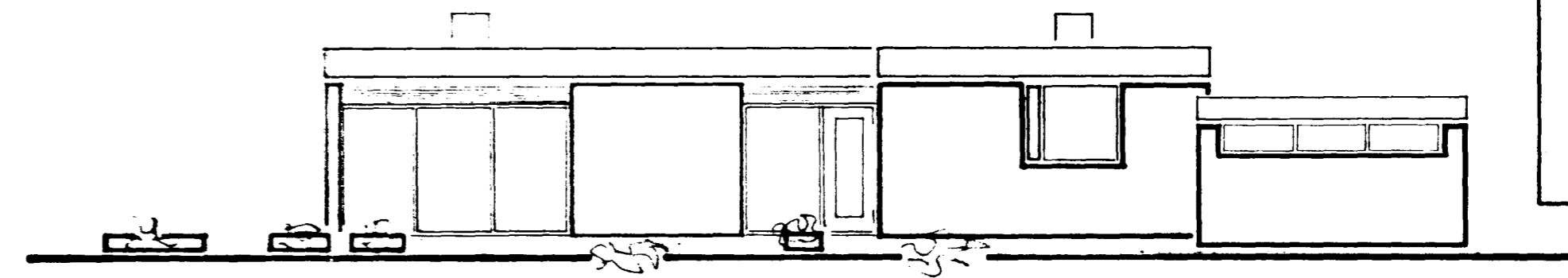
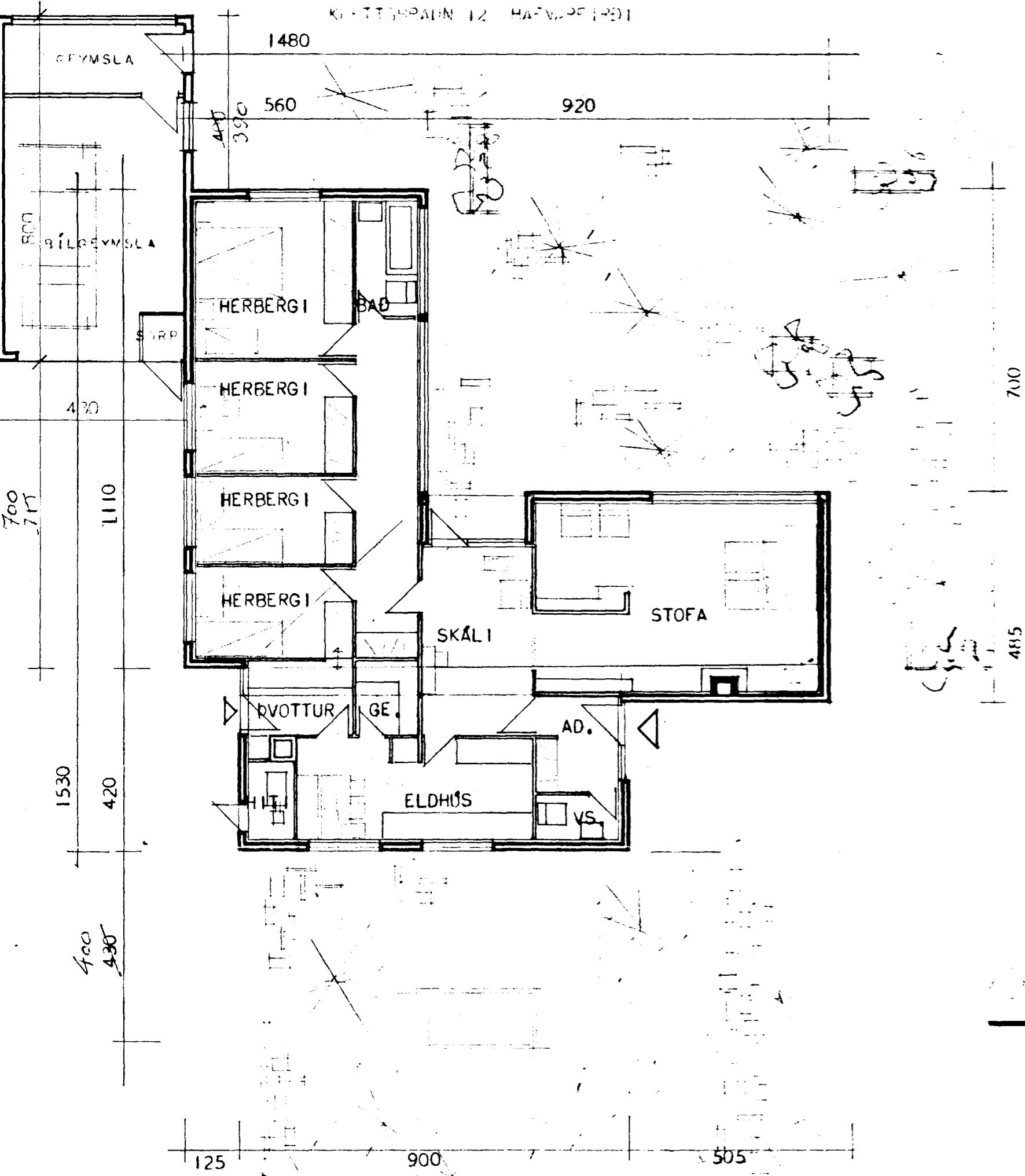


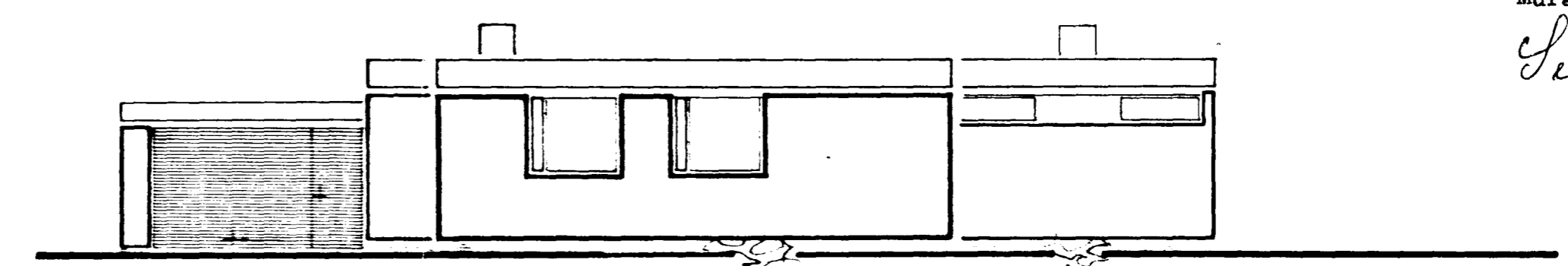
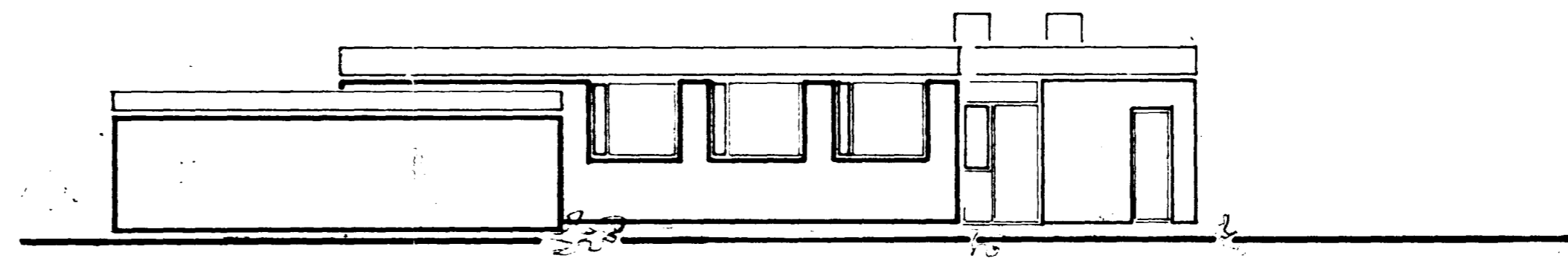
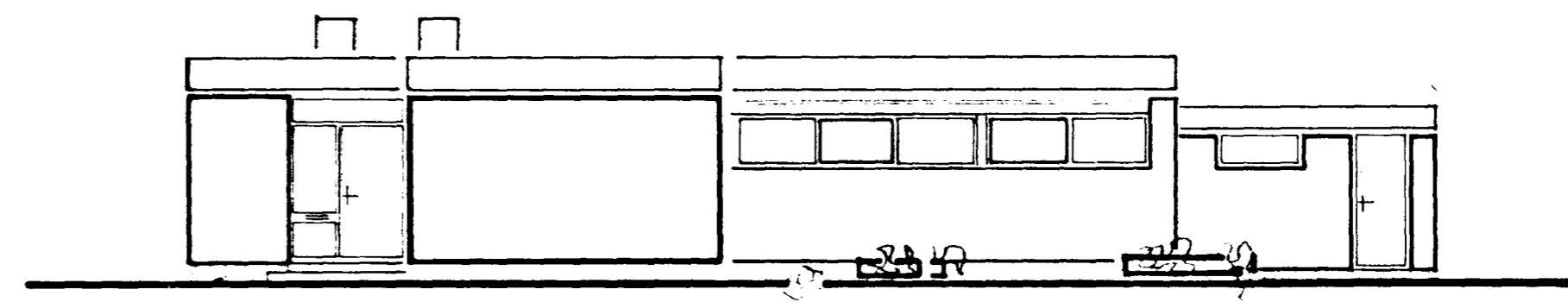
Áskjal á fundi bygginga-
ráðs p. 19. 15. 1965

BYGGINGAFLUKURIN
Í HAFNARFIRDI

Sigurður Ólafsson

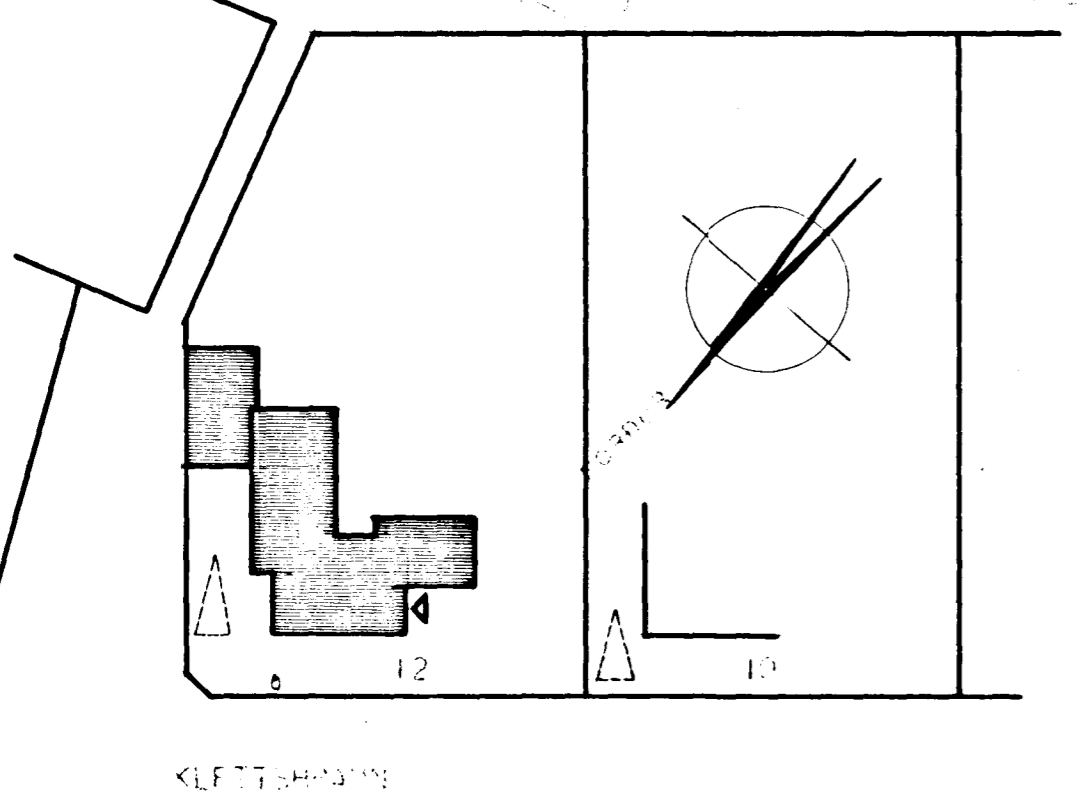


BRÚTOFLATARMÁL ÍBÚÐARHÚSS----- 138,45 M²
NETTOFLATARMÁL ÍBÚÐARHÚSS----- 120,00 M²
BRÚTOFLATARMÁL BÍLGEYMSLU----- 35,20 M²



Húsnámsábyrgðarmannastjóri.
Víggfinna Sigurðsson

Múraramannastjóri.
Sigurður L. Arnason



HÚSNÆÐISMÁLASTOFNUN RÍKISINS	
GRUNNMYND ÚTLITSMYNDIR SNEIÐING MÁL 1:100	EINBYLISHÚS VERK 70
	OKTÓBER 1963 BLAÐ NR. 1

Hilmar Ólafsson
Kaeldís Kaeldís