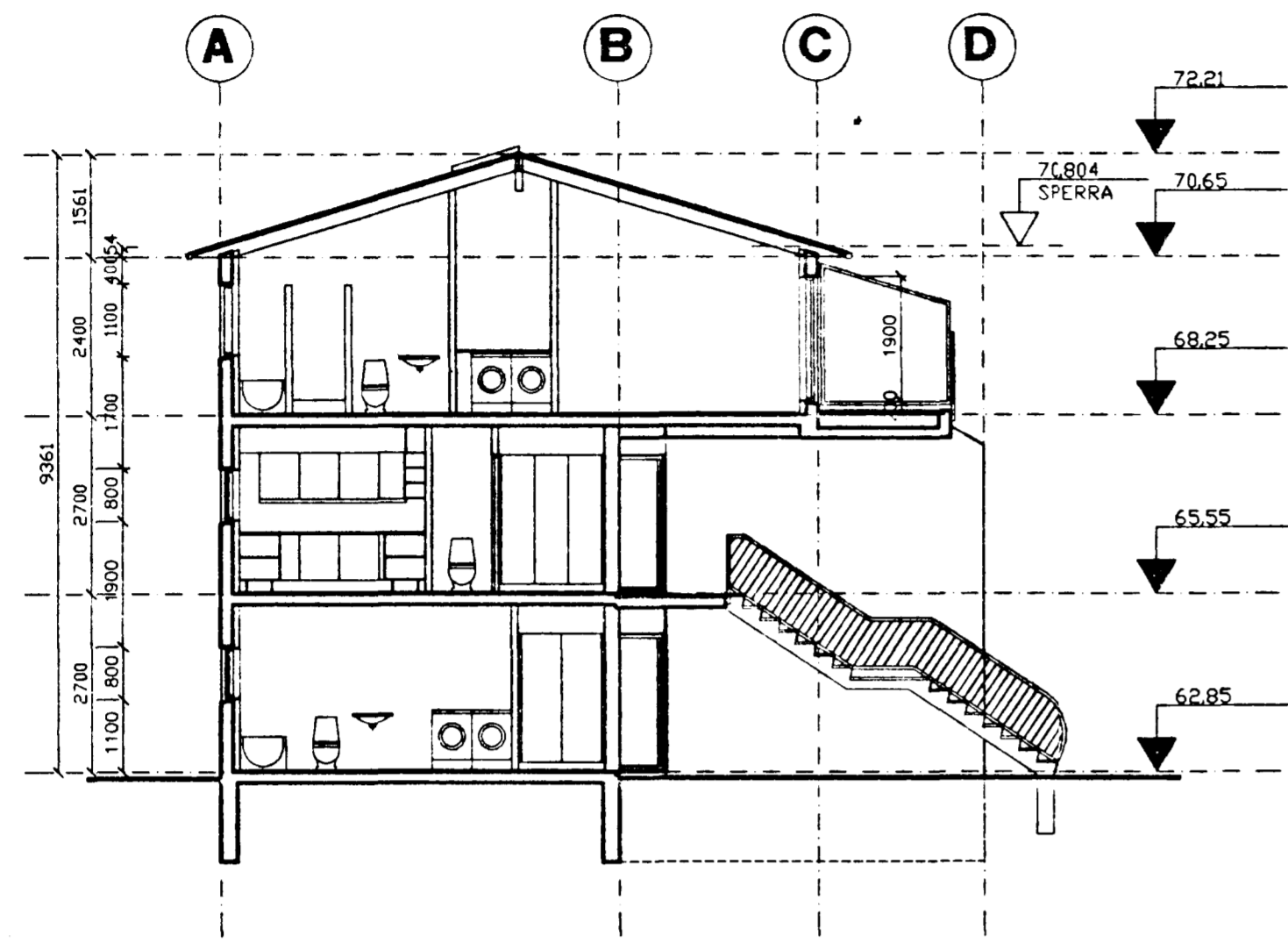


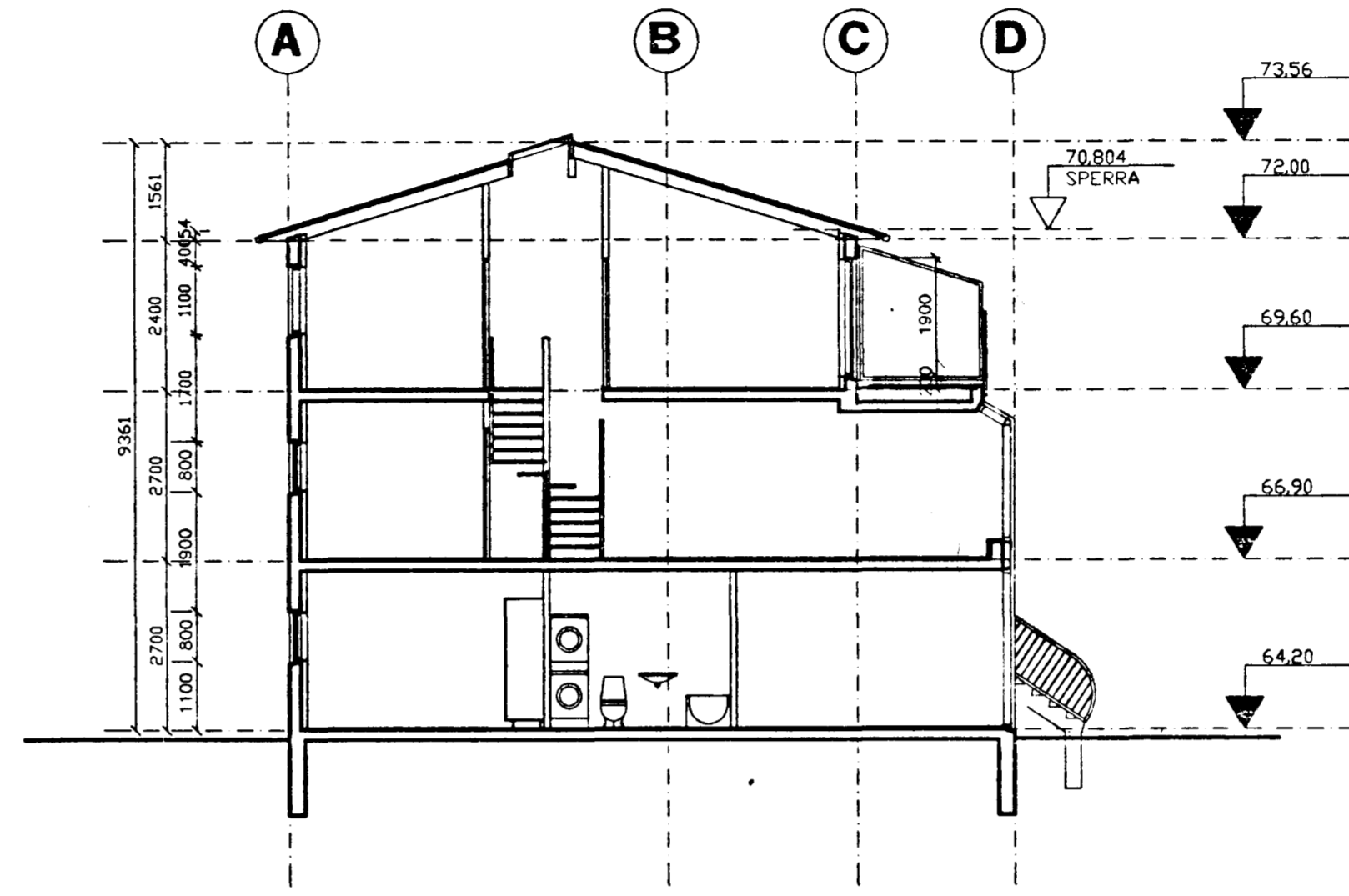
Sambykkt á fundi bygginga-  
nefndar þ. 17.10.1990

BYGGINGAFAULLTRÚINN  
HAFNARSTRÆTI  
*Póttur Jónsson*

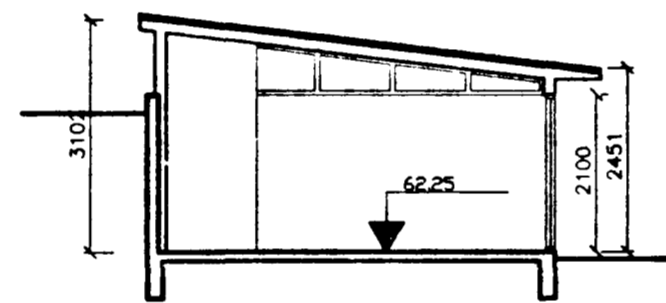
Ganga skal frá opnu  
eldstæði í samræmi  
við reglugerðir



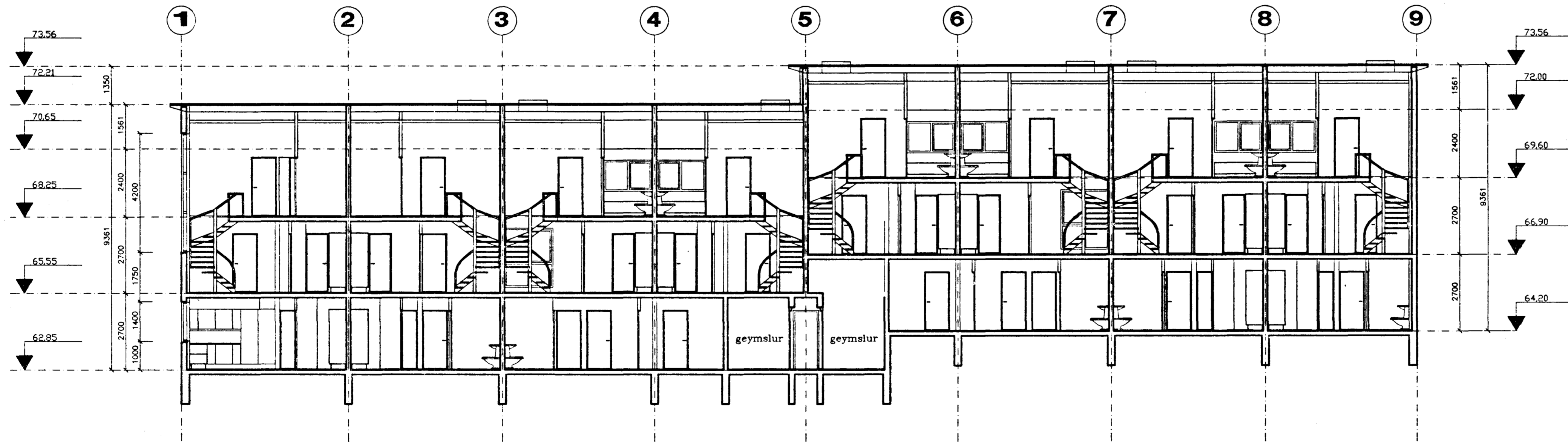
SKURÐUR A - A



SKURÐUR B - B

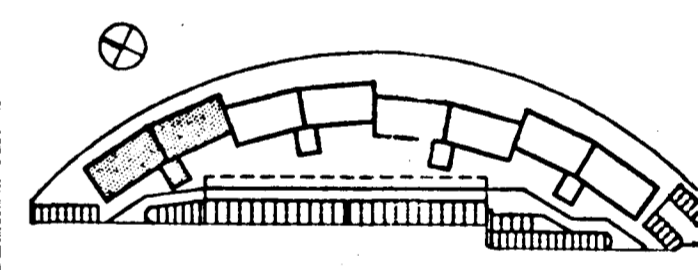


SKURÐUR Í HJÓLA-  
OG VAGNAGEYMSLU



SKURÐUR C - C

B 12.10.90 ALM. BR. SVALAR MÁL SKUR OFL. JÓL  
BREYTT: DAGS: LYSING: TEIKNAD:



**SETBERGSHLÍÐ**

**SH VERKTAKAR**  
STAPAHAUN 4. SIMI: 652221  
220 HAFNARFJÖRÐUR FAX: 652745

**BATTERIÐ**  
ARKITEKTAR  
HAFNARSTRÆTI 17  
IS 101 REYKJAVÍK  
SÍMI: 623355, FAX: 623708  
KENNITALA: 450788-1559  
JÓN ÓLAFUR ÓLAFSSON FAI  
SIGURÐUR EINARSSON FAI

**KLUKKUBERG 11-17**

**SKURDMYNDIR**

MKV: 1:100 DAGS: 14.09.1990

TEIKNAD: SE JÓL SAMBYKKT: SE JÓL

HANNAÐ: *Jón Ólafur Ólafsson*

9008A 103