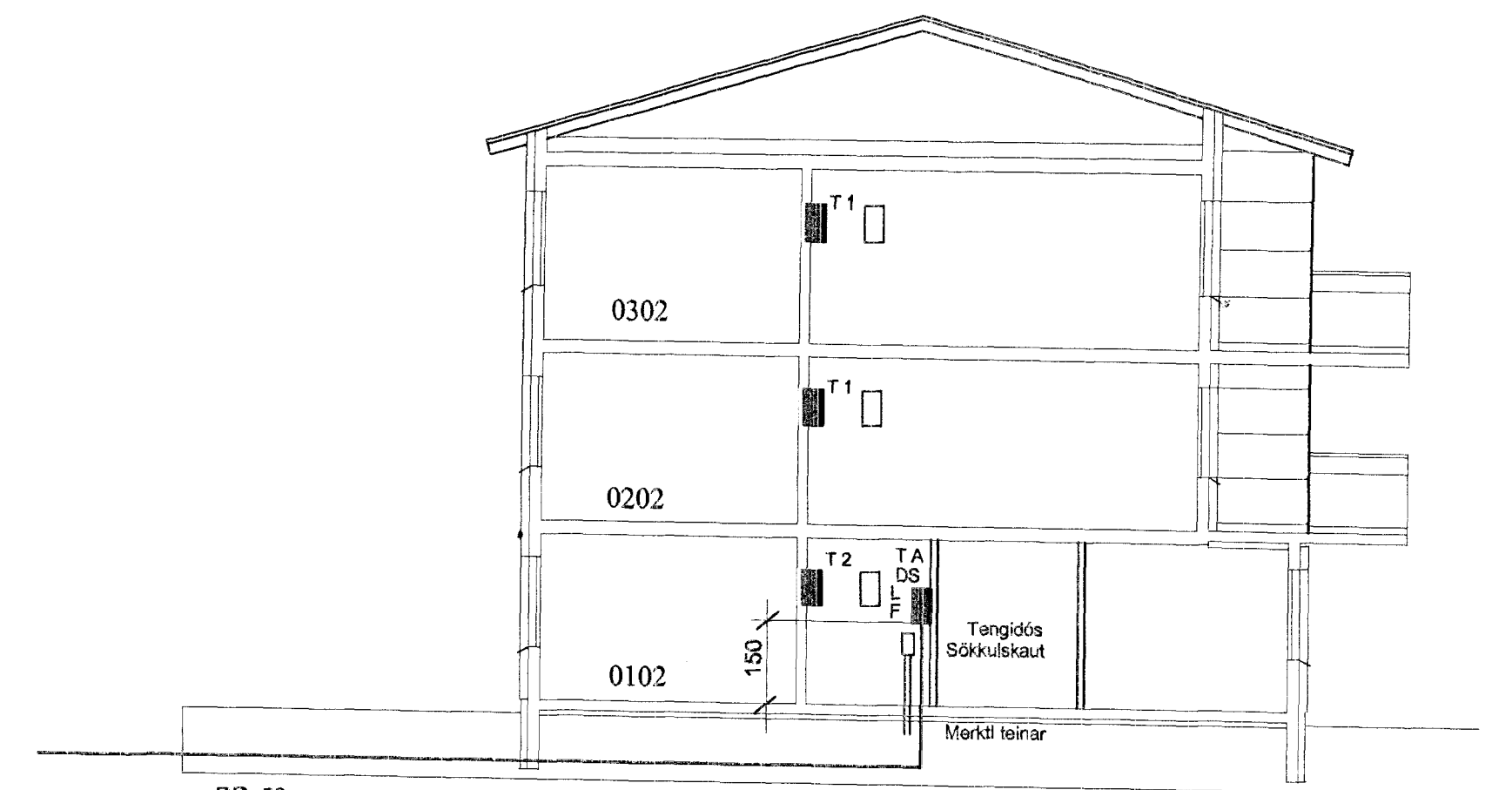
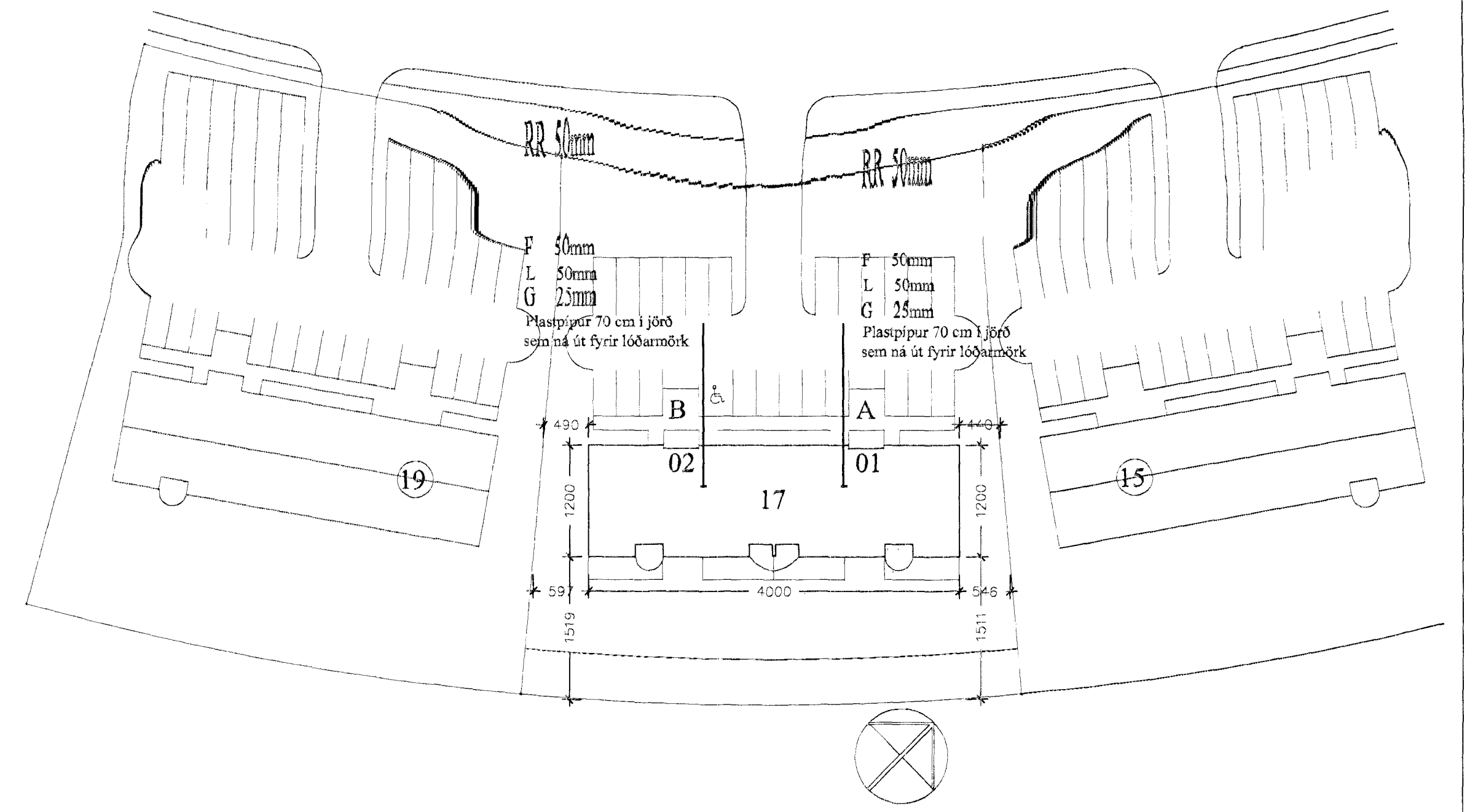
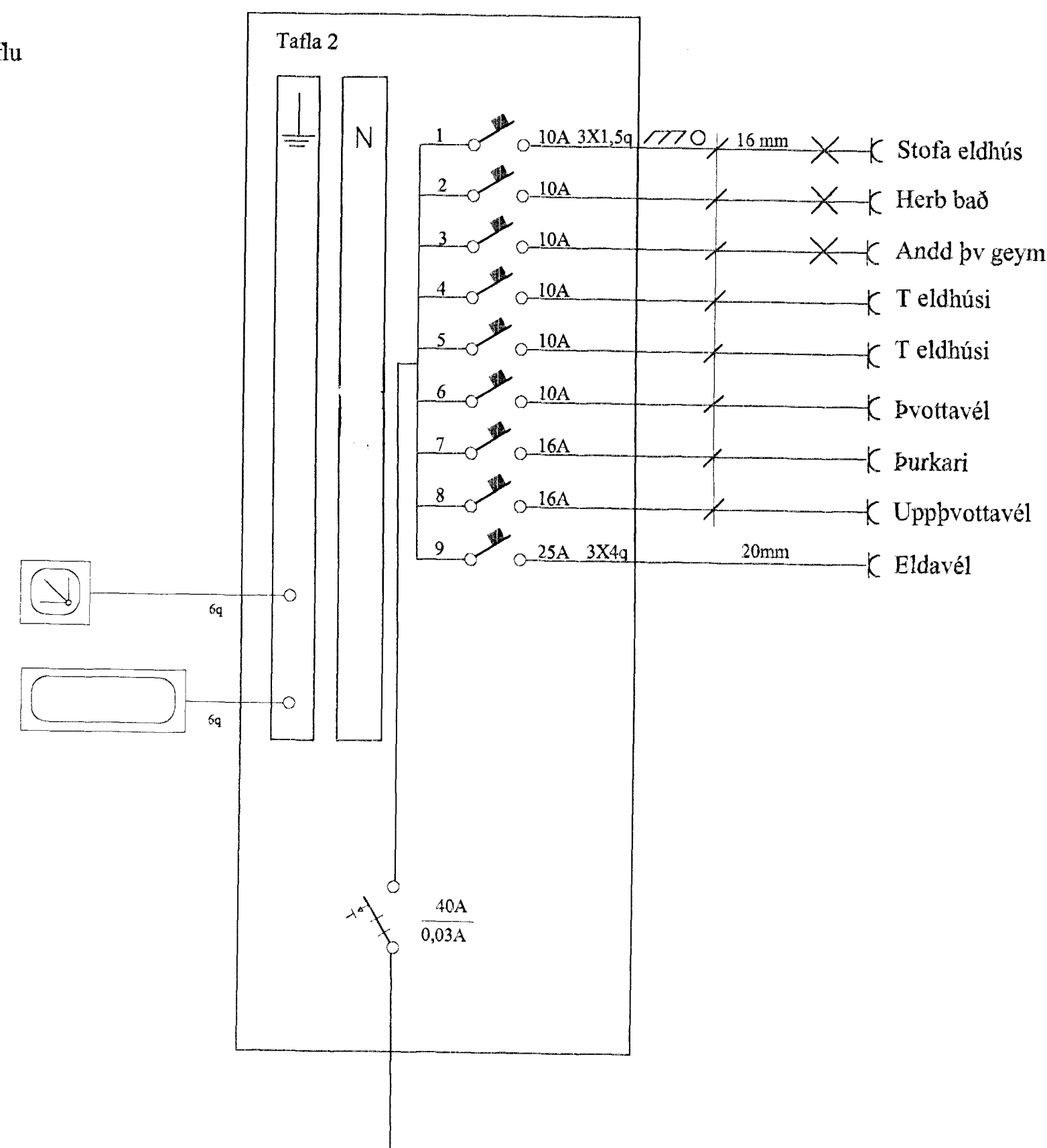
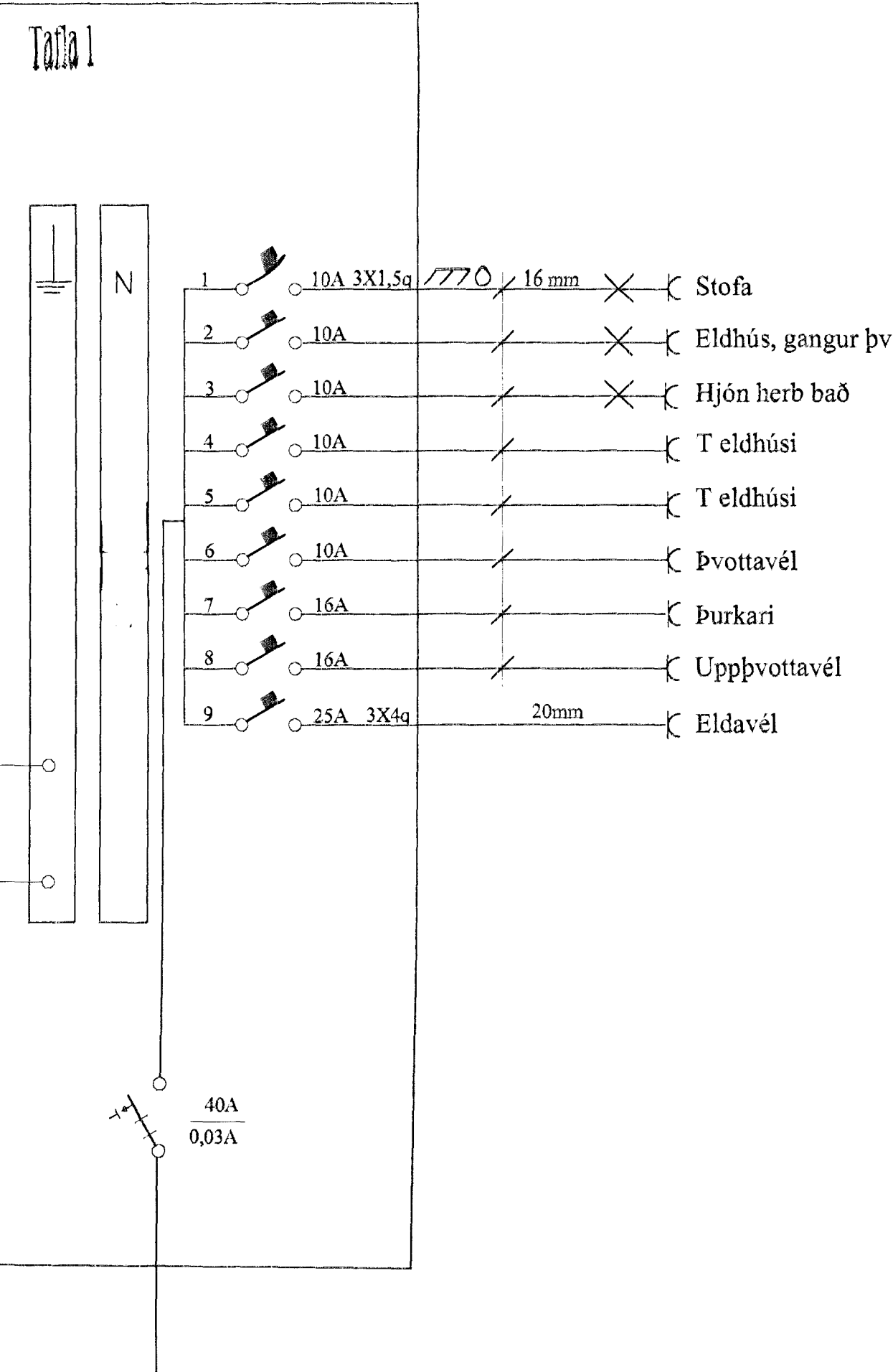
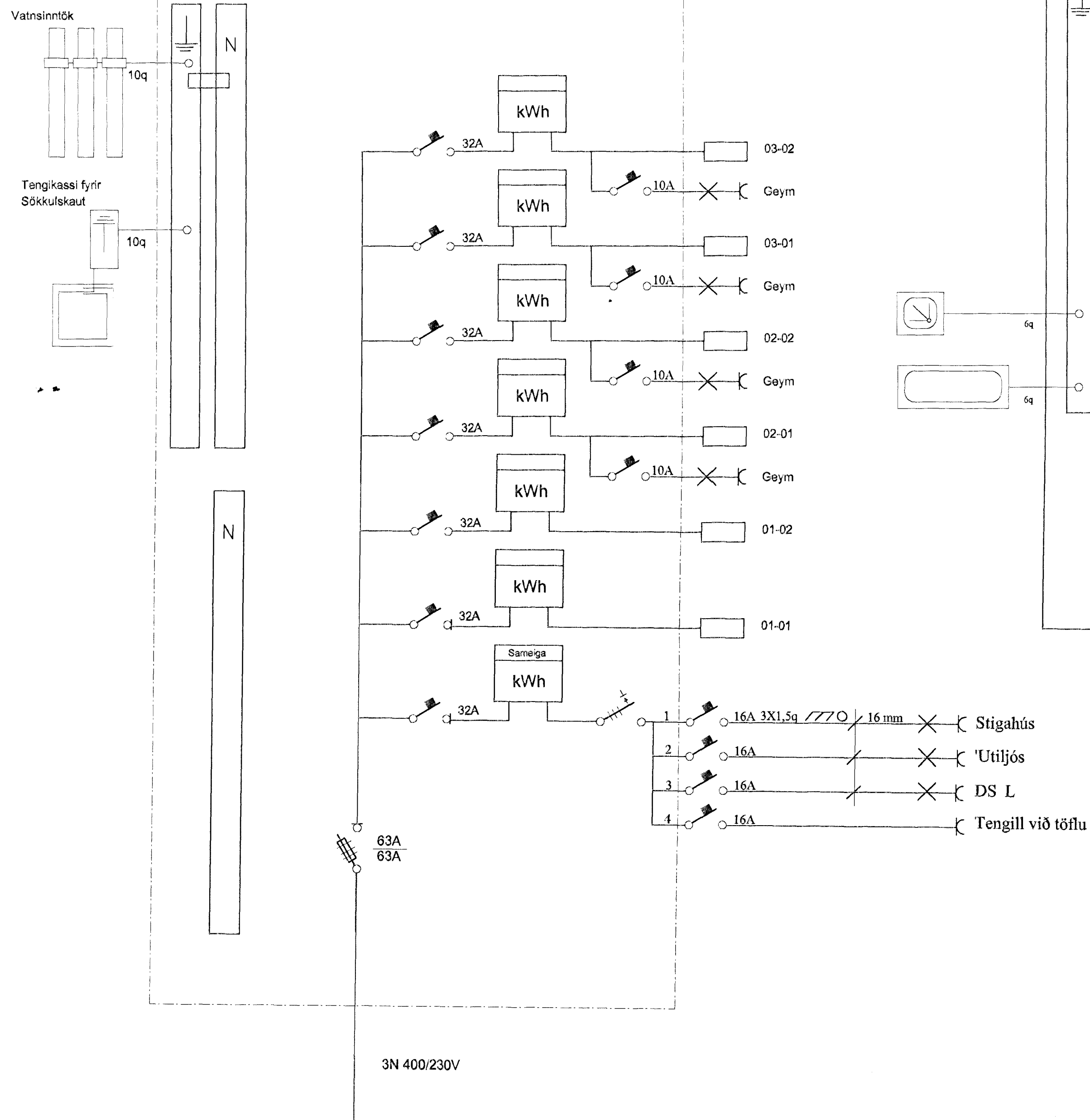
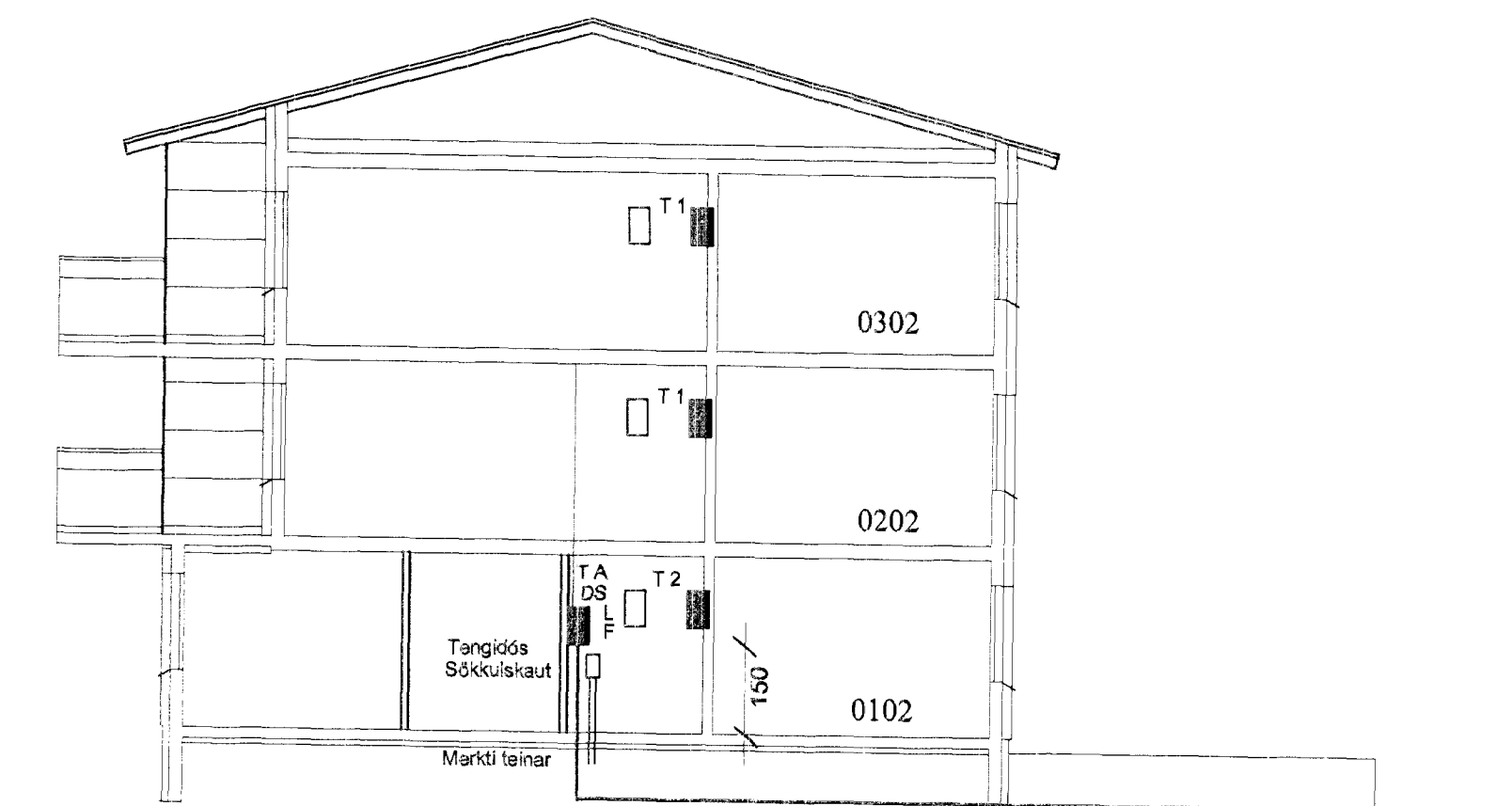


Adalstaða Kriúás 17 A og B



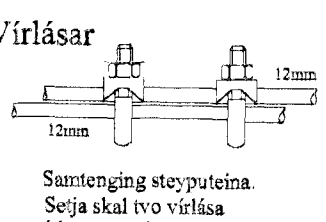
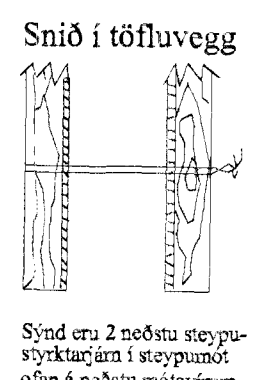
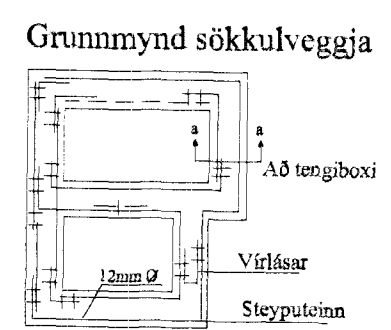
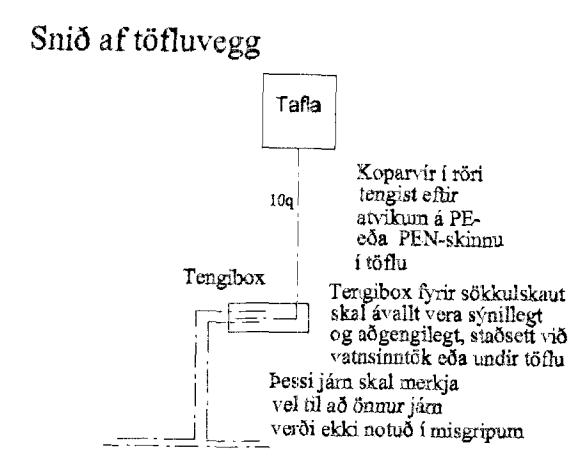
Snið a-a Kriúás 17 A mkv. 1:100

RR 50mm
L 50mm
F 50mm
G 25mm
Plastp/ur 70 cm í jörð sem ná út fyrir lóðarmörk



Snið a-a Kriúás 17 B mkv. 1:100

RR 50mm
L 50mm
F 50mm
G 25mm
Plastp/ur 70 cm í jörð sem ná út fyrir lóðarmörk



Elys
Rafagnaveikningar

Reykjavíkuvagi 66 Hafn. S. 565-4755 GSM. 863-4720

Þórhur Kristjánsson Rafv.m. kt. 040851-4969 V. Eima Cates Tætnit. kt.131155-3529

Kriúás 17 A og B Hafnarfirði

Grunnmynd 3 hæðar A og B
Rafagnaveikningar E. A. Hauksson
Afstöðuneyti - Sniðara.

Tekning nr. 565-00	Dags: 30-08-00	Hanna
Mkv: 1:50	Bláð: 7 af 7	Teknað: vec