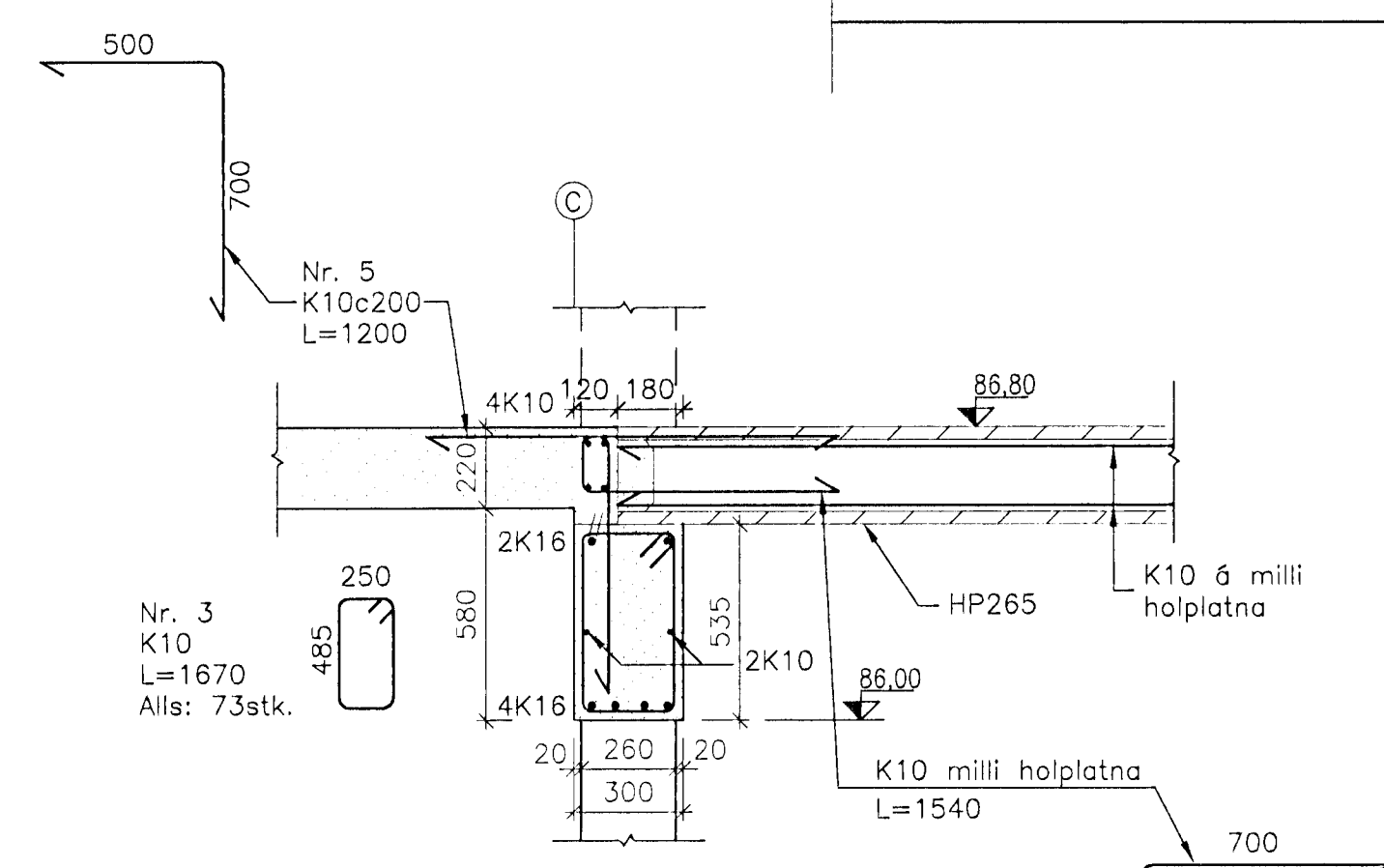
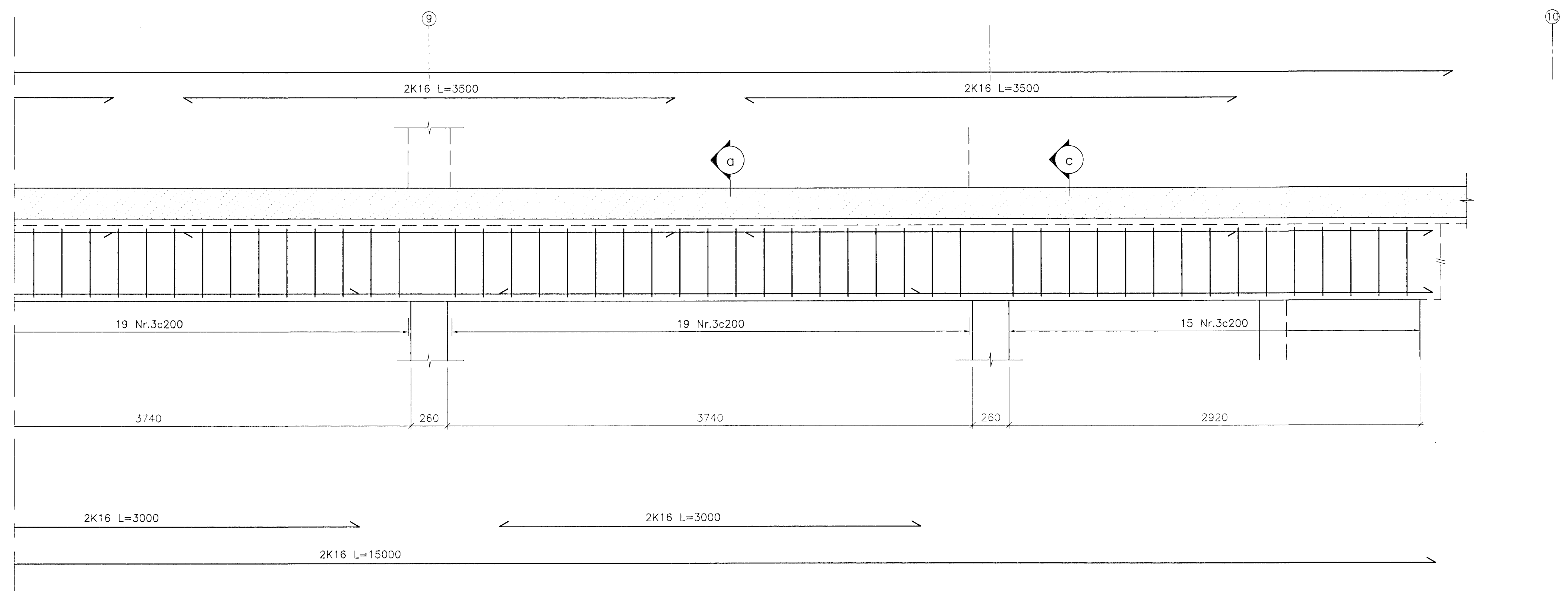
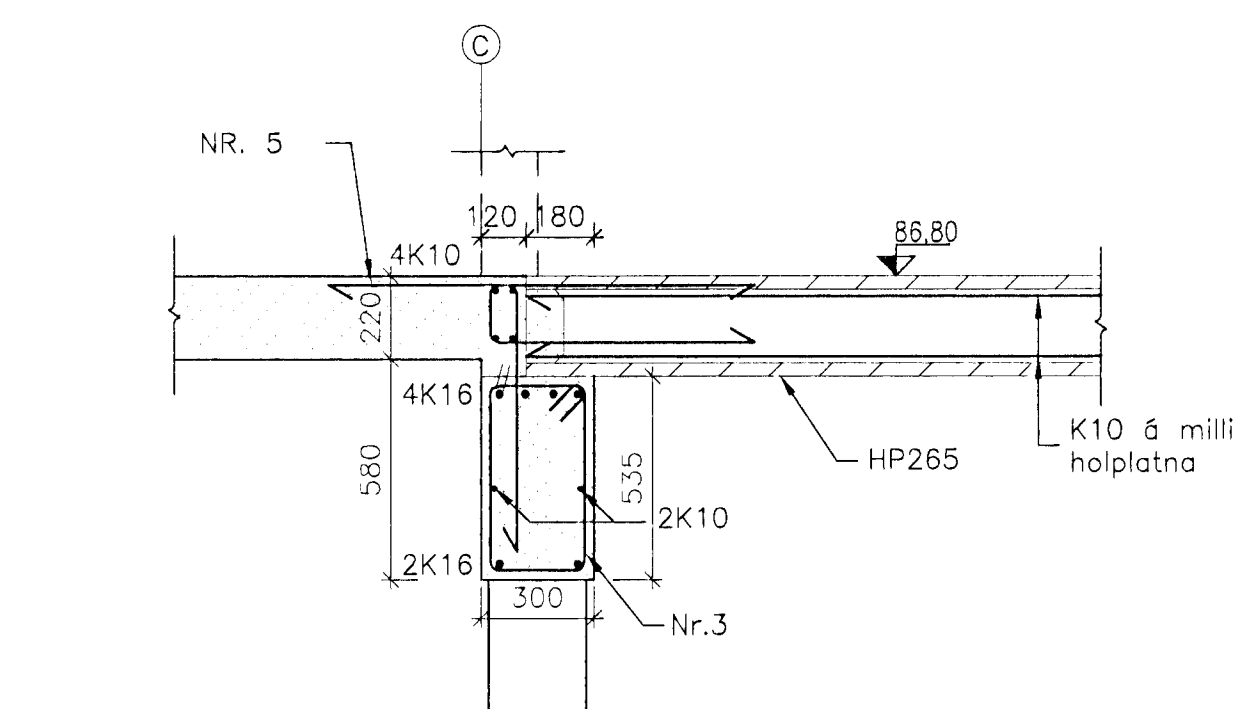


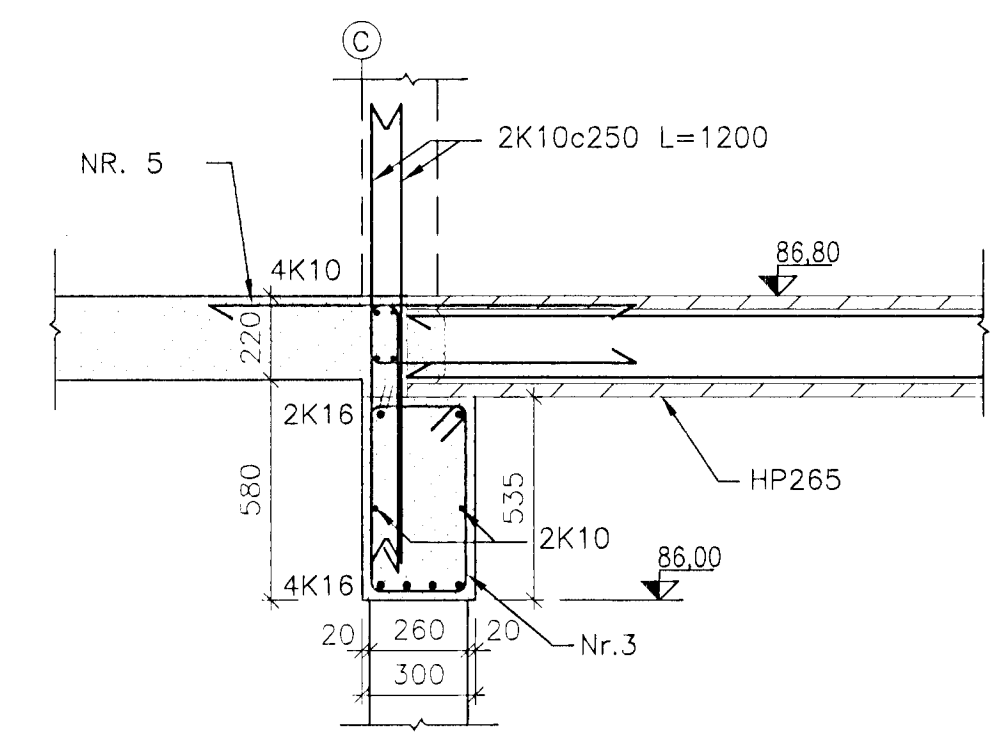
B7 LANGSNID
032 1:20 Alls: 1 stk.
033



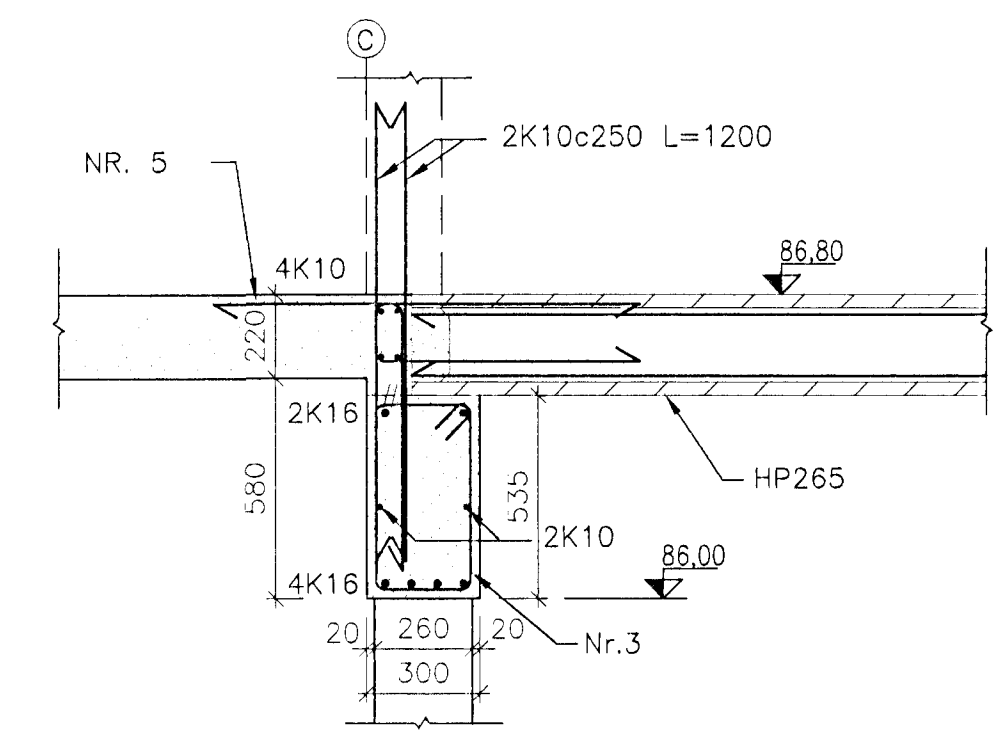
a SNID
1:20



b SNID
1:20



c SNID
1:20



d SNID
1:20

Aritun samræmingarhönnuðar:
Dani Erlin

SKÝRINGAR:
Almennar skýringar sjá teikningu 5138-010.

Ath: Steypa í bitum skal vera C30

| ÓTÁFA | DAGSETNING | TEIKNAD | YTIRFARID | SAMÞYKKT |
|----------|------------|------------|-----------|----------|
| EDLU | BREYTINGAR | | | |
| HANNAÐ: | PG | DAGS.: | 31.07.'00 | |
| TEIKNAD: | PG/SI | KVARDI: | 1:20 | |
| YFIRF.: | GAM | VERK NR.: | 5138 | |
| SKRÁ: | 5138-056 | TEIKN.NR.: | 056 | |

SAMP: *Rud. Camundson 20259284*
FRUMSTÆRD BLADS A1 - BLADSTÆRD A3, MINNKUN 1:2

GRUNNSKÓLI Í ÁSLANDI
KRIÚÁS 1, HAFNARFIRDI

Burðarvirki Biti B7 Langsnið og snið
Sampykkt þann 19 OKT. 2000



BORGARTÓNI 17 - 105 REYKJAVÍK NETFANG: fjarhitun@fjarhitun.is
SÍMI 562 8955 - FAX 562 8950 VEFSIDA: www.fjarhitun.is
KENNITALA: 700186-1649