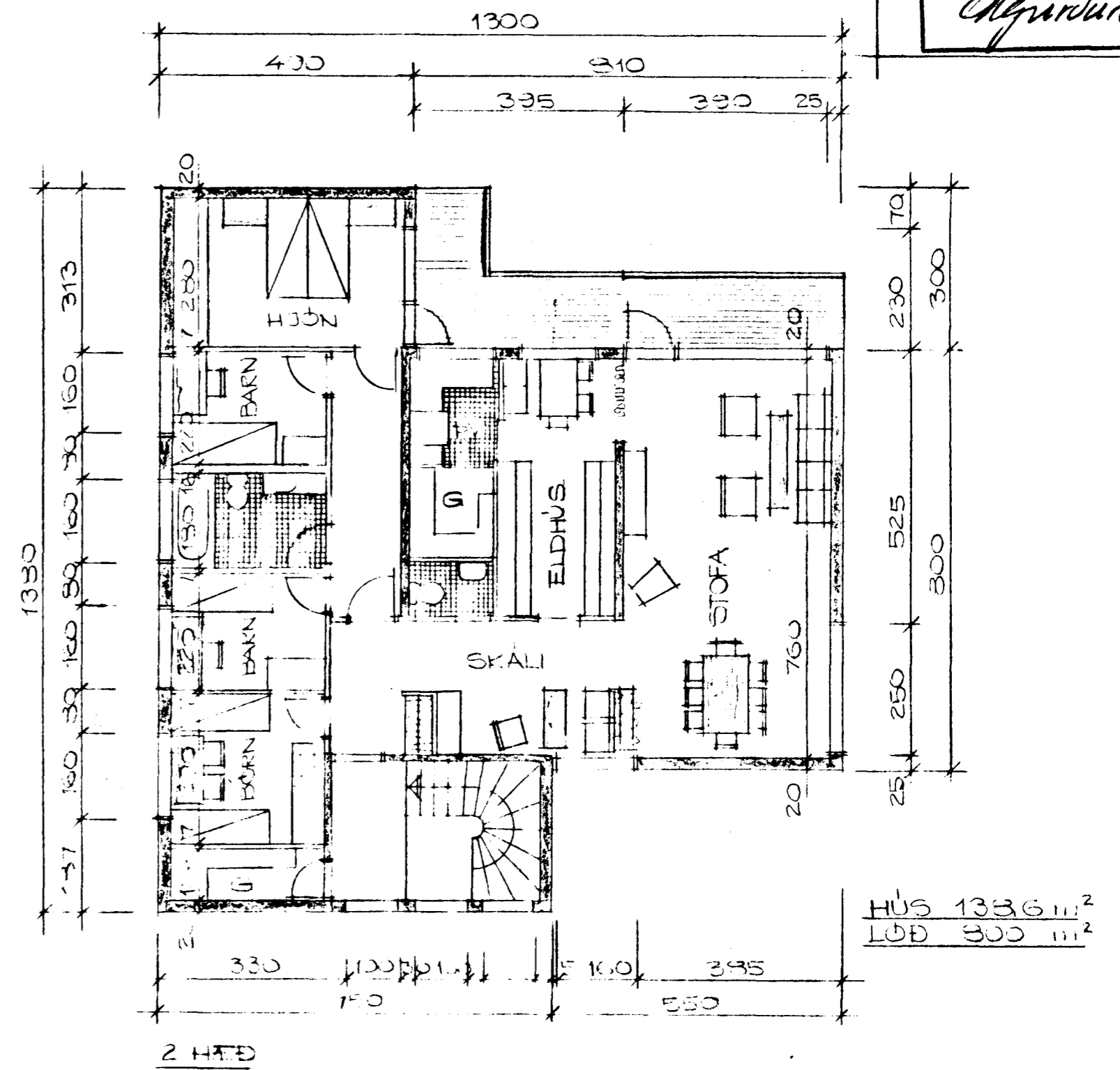
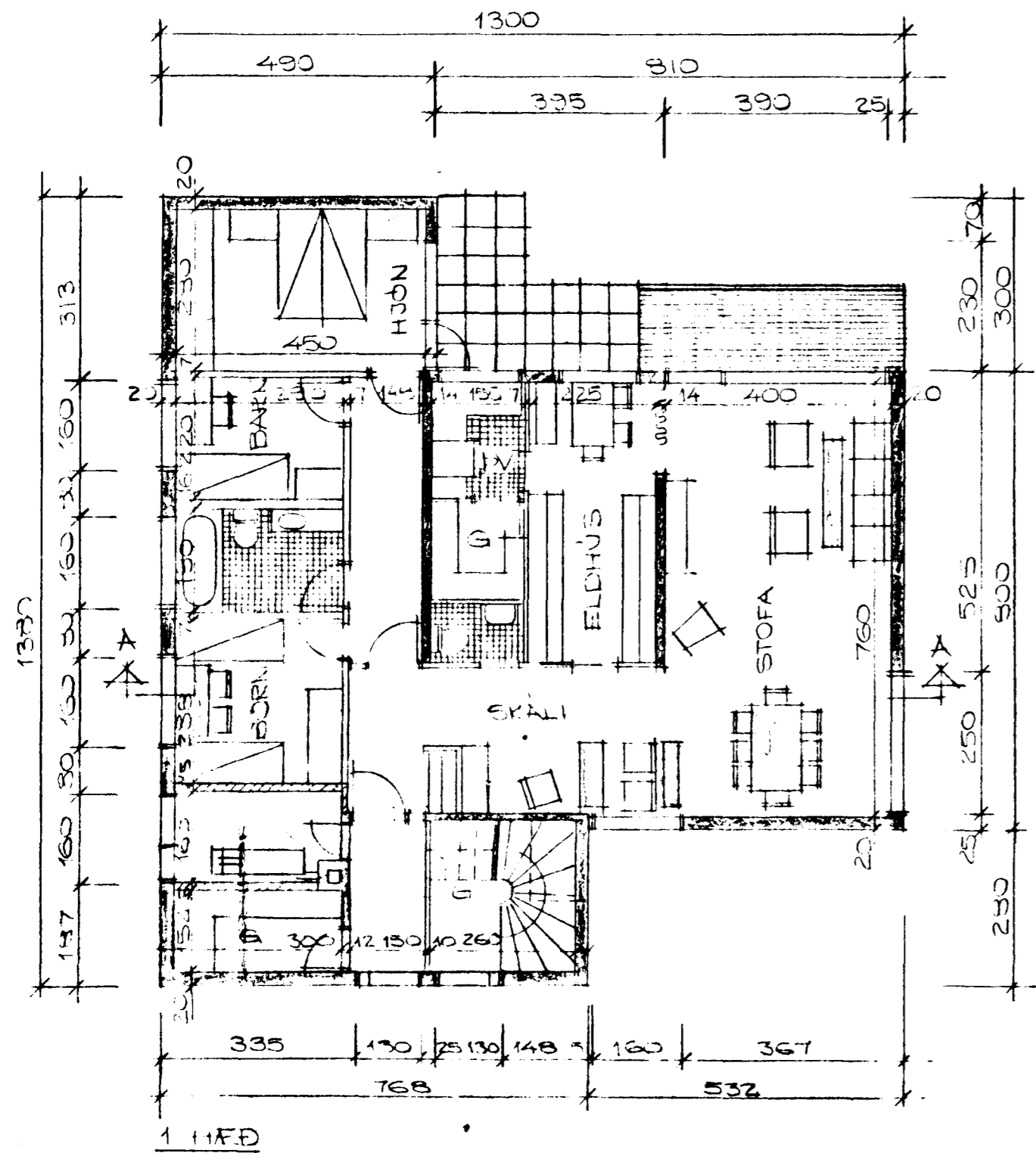


KRÖKAHRAUN NR 2

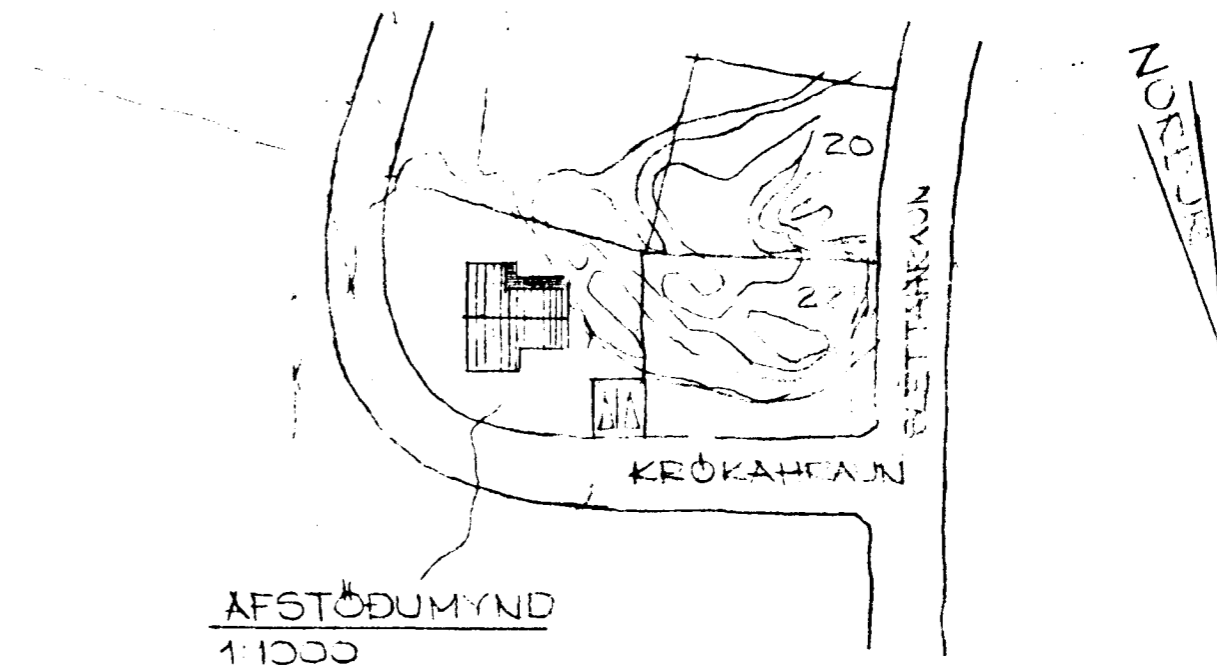
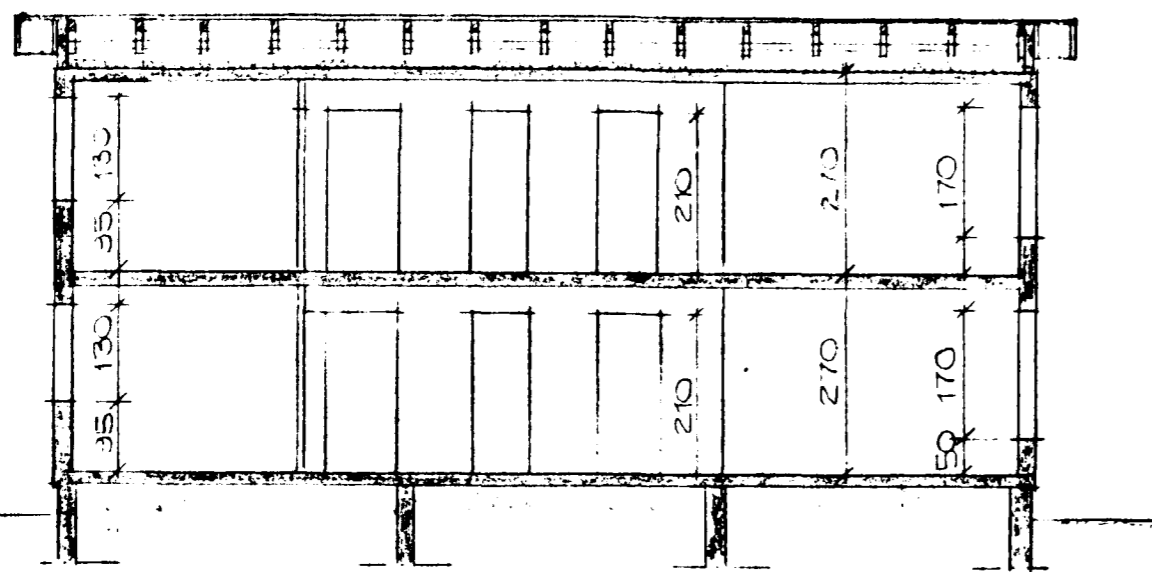
Samþykkt & fundi bygginga-
nefndar þ. 213 1966

BYGGINGAFULLTRÚINN
Í HAFNARFIRÐI

Sigurður Ólafsson



HÚS 133,6 m²
LGD 300 m²



REYKJAVÍK | MARZ 1966

Sigurður Ólafsson