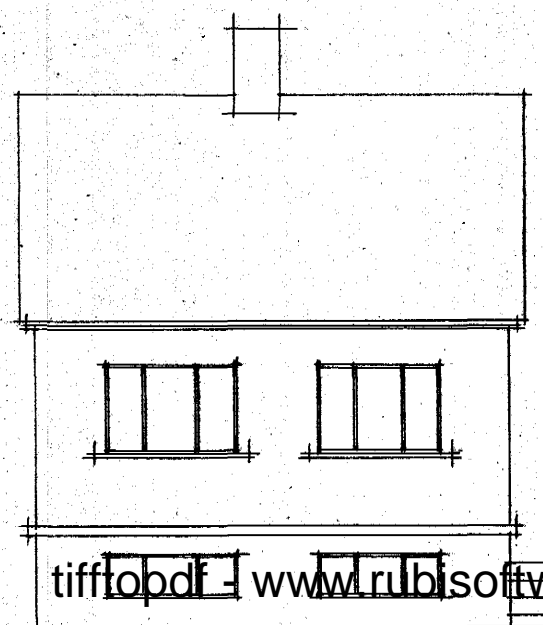
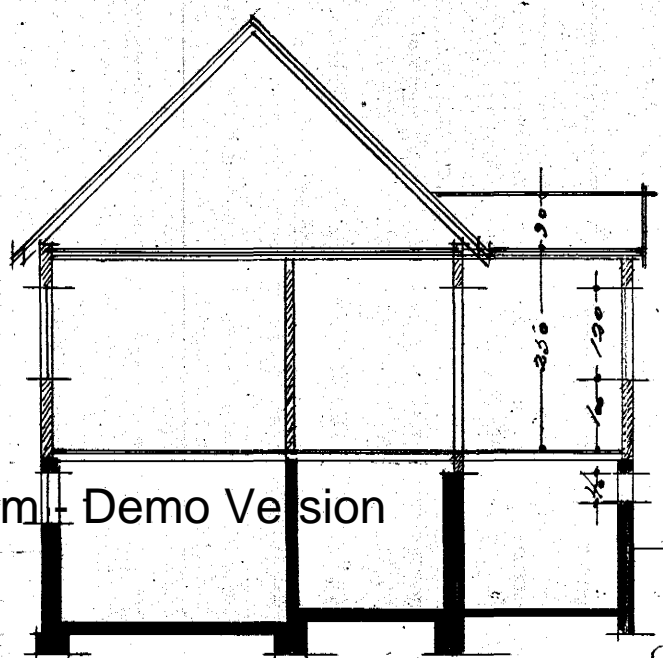


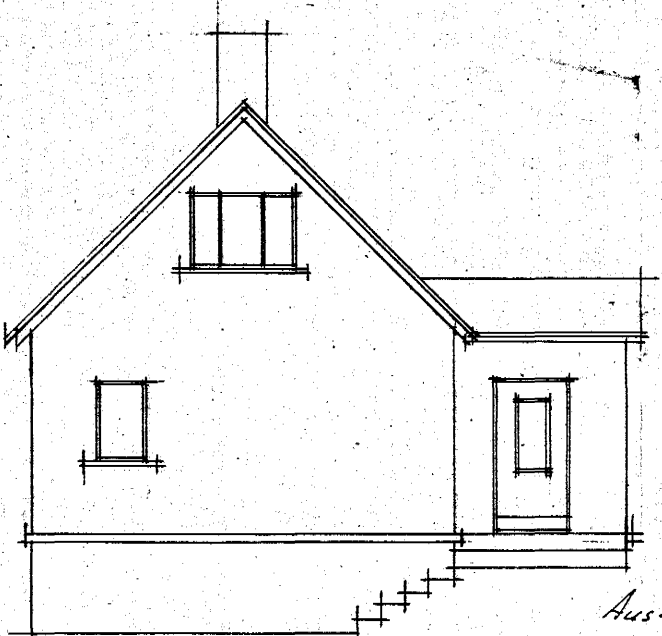
Hús Lóns Sigurdssonar Krossenarv. 14. Hafnarf. (eftir breytingu)  
M-1-100



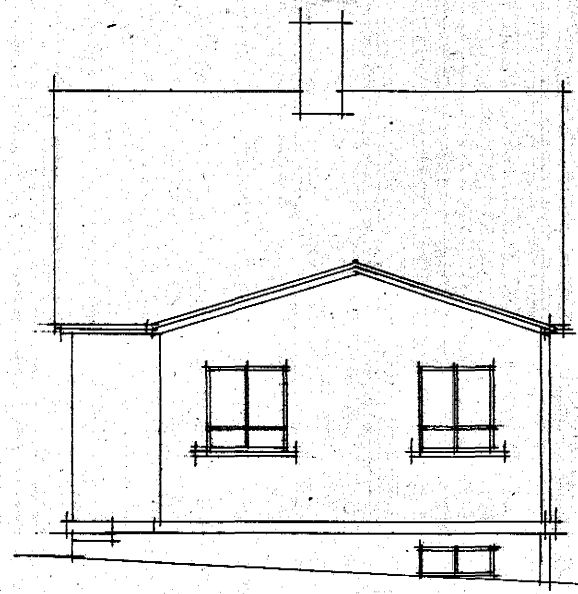
Götuhlíð



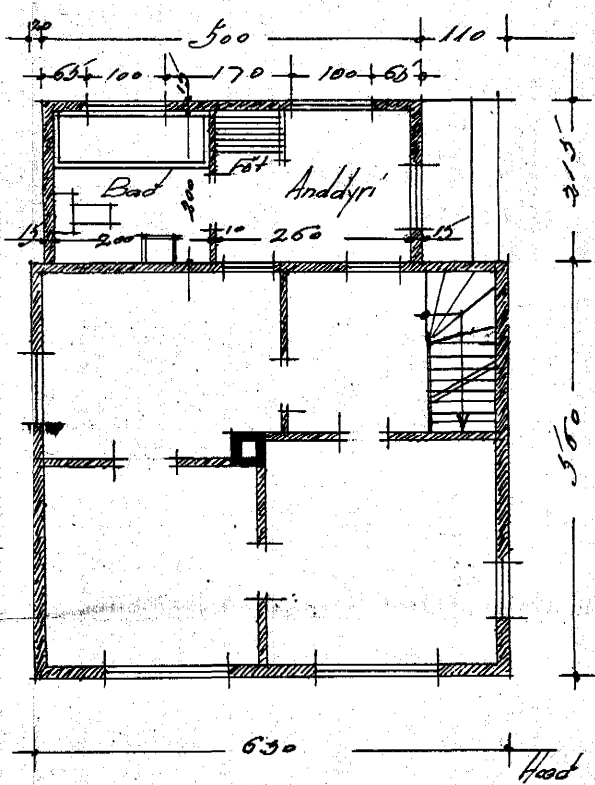
Skurður



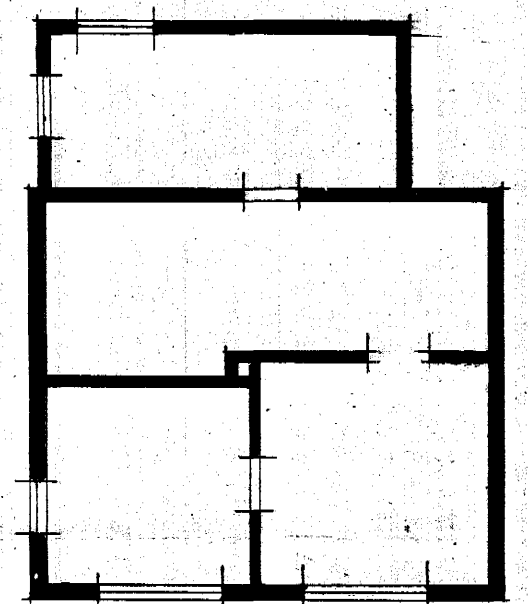
Austur



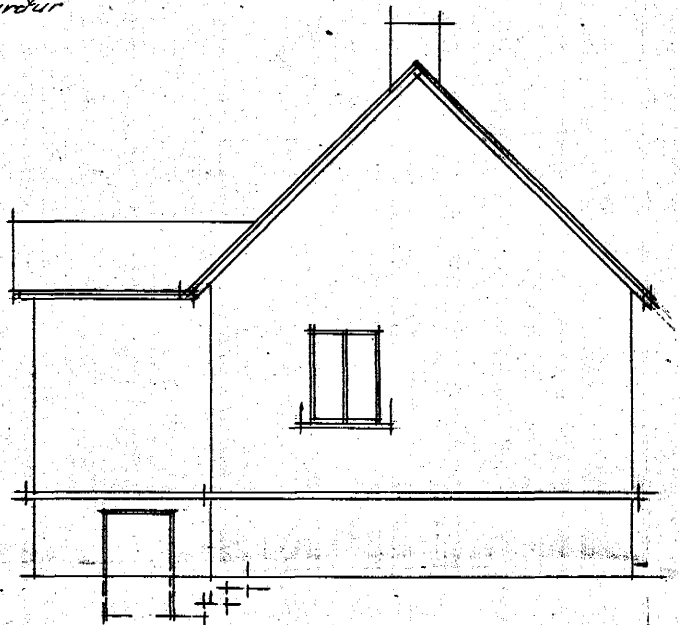
Norður



Kjallari



Kjallari



Vestur

Hafnarfirði í maí 1947  
H. Ragnbjörnsson  
Sig. Guðmundsson