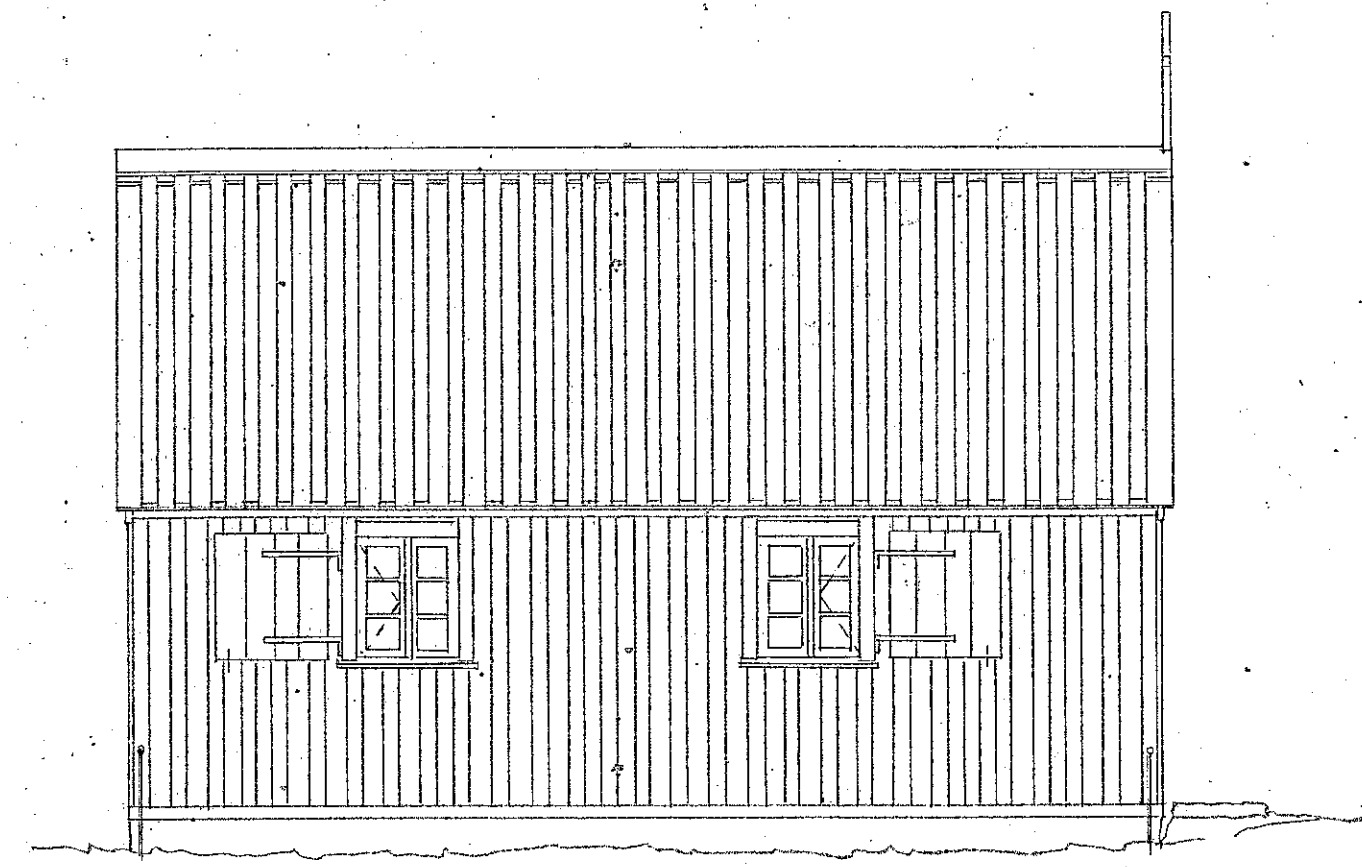
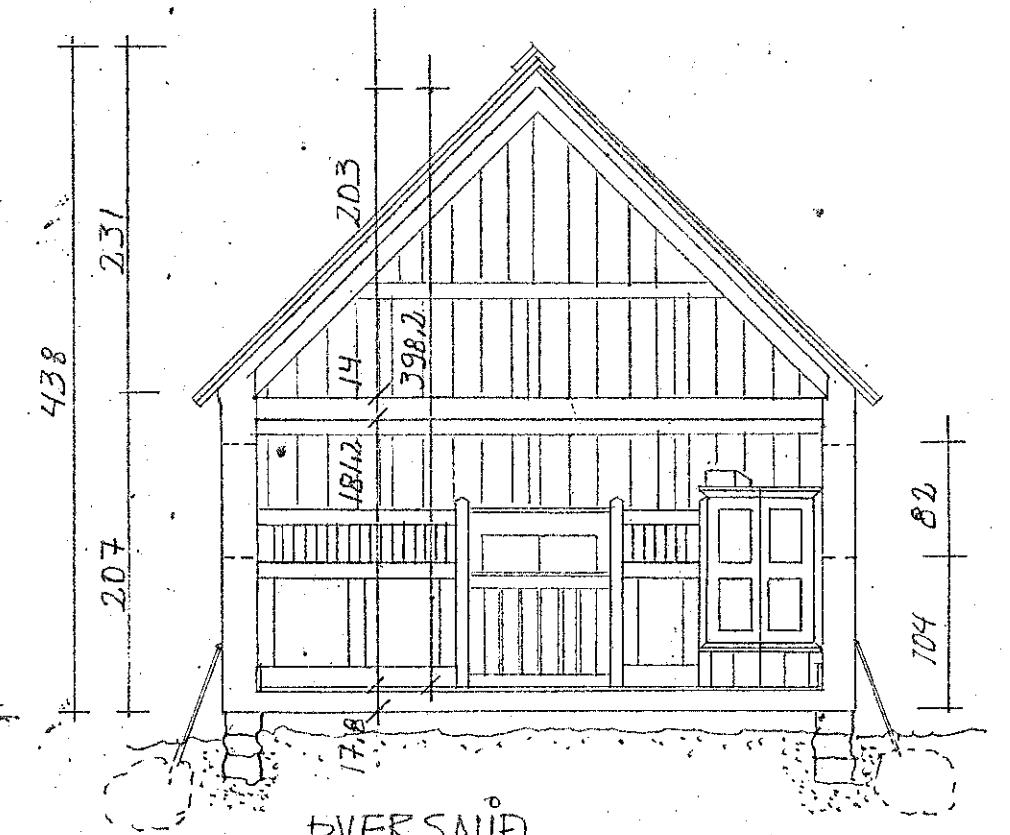


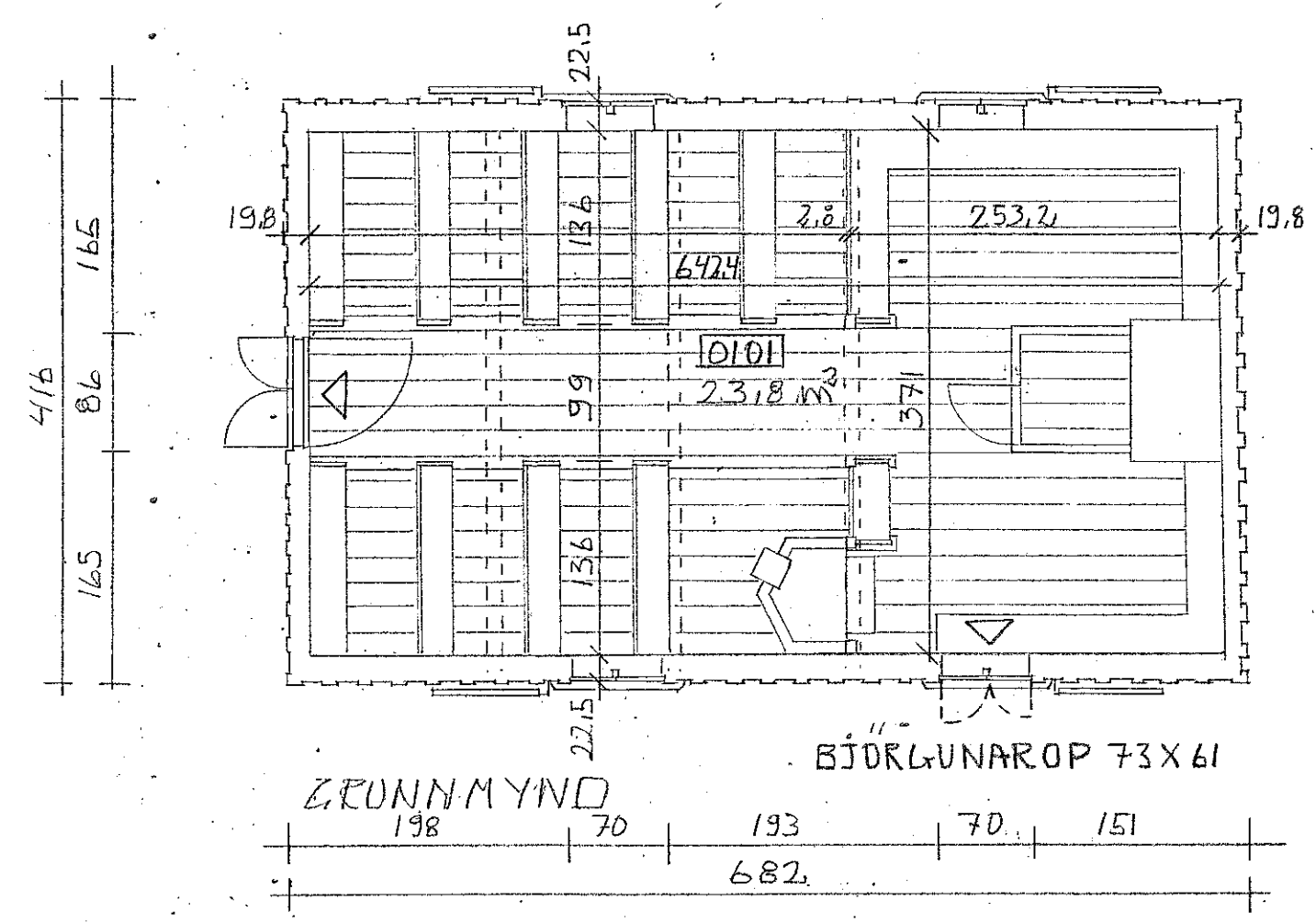
SÚÐURHLIÐ



NORÐURHLIÐ

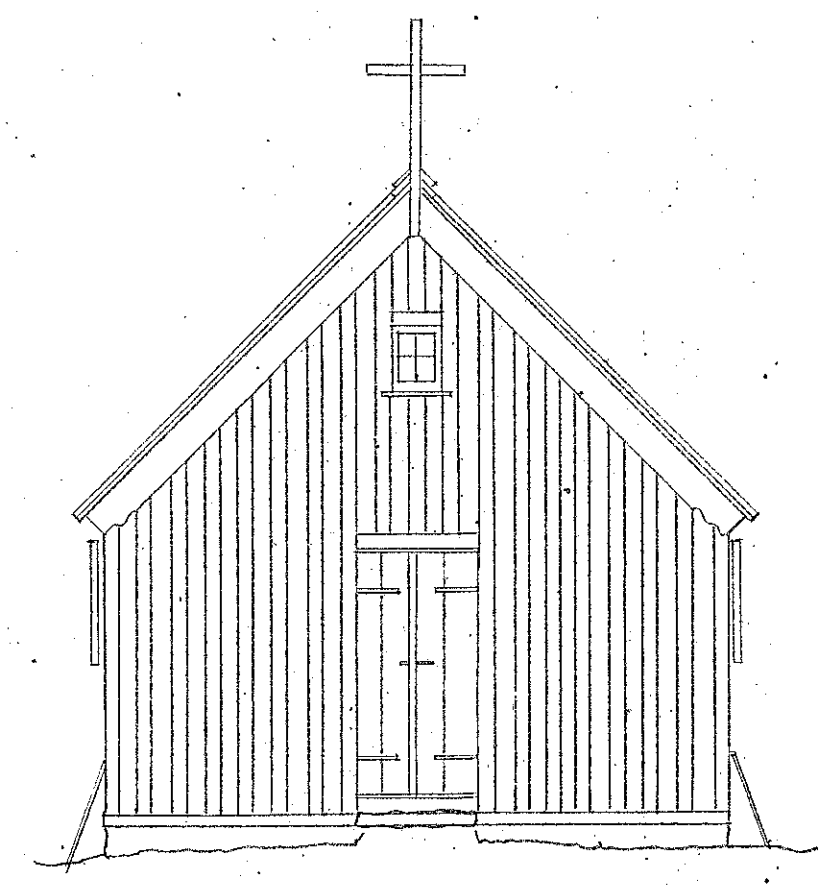


ÞVERSNIÐ

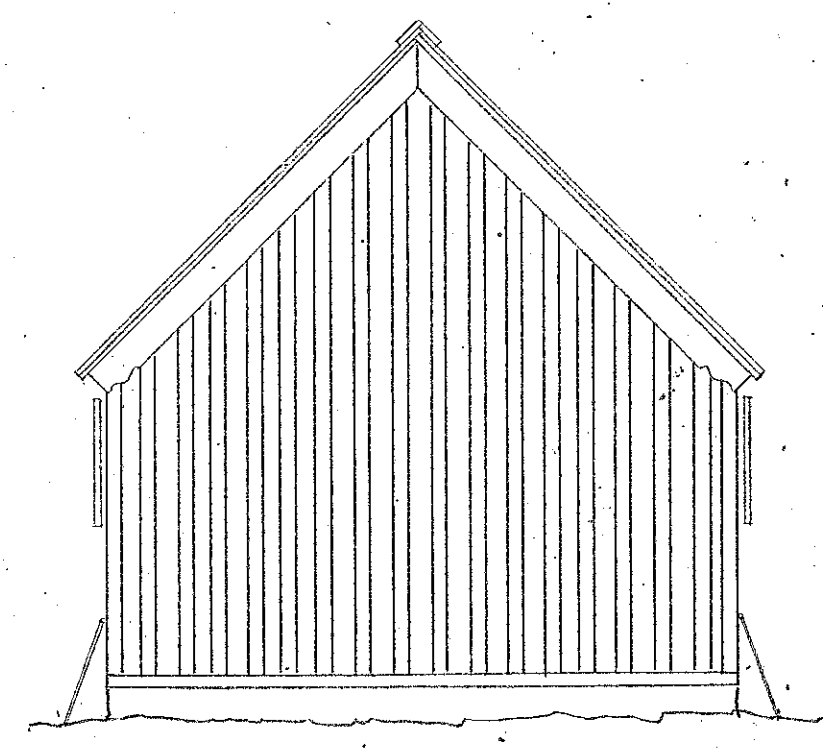


GRUNNMYND

BJÖRGLUNAROP 73 X 61



VESTURGAFL



AUSTURGAFL

Sigurður Einarsson arkitekt, kt. 110457-2789
Hönnuður aðaluppdráttu og hönnunarstjóri

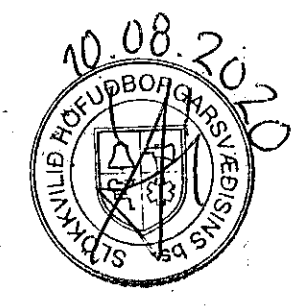


Suðurgötu 41 102 Reykjavík sími 5302200

Húsasafn
Tjarnarvöllum 11 221 Hafnarfirði
Guðmundur Lóther Hafsteinsson arkitekt

Jóhanna L. Kjellman
Krýsuvíkúrkirkja

Endurreisn eftir bruna.
Byggingarnefndarteikning.
Mkv.: 1:50. Teikning nr. 2.
Dags. 22.06.2020
Teiknað af: GLH
Hannað: GLH



Krýsuvík