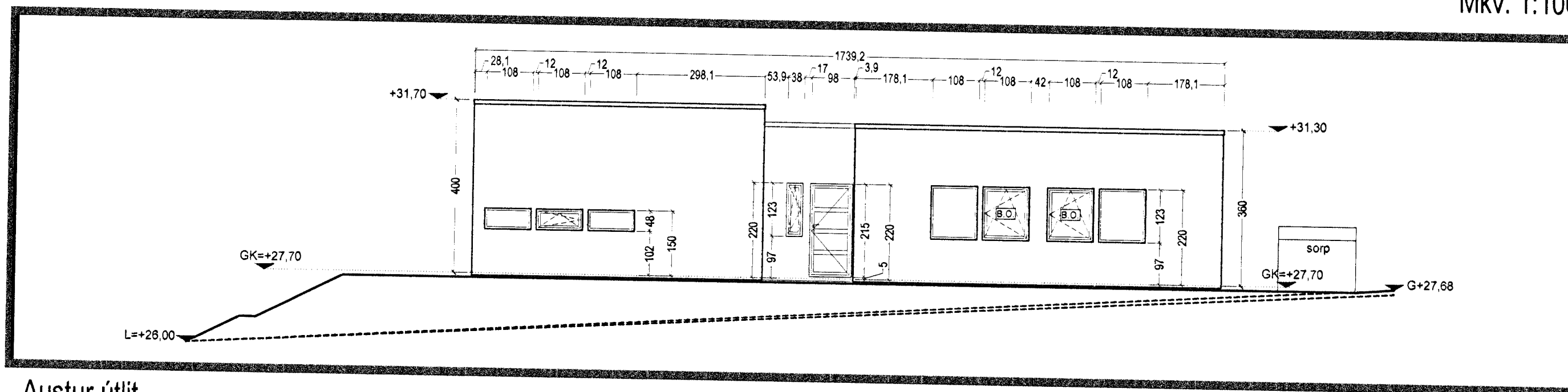


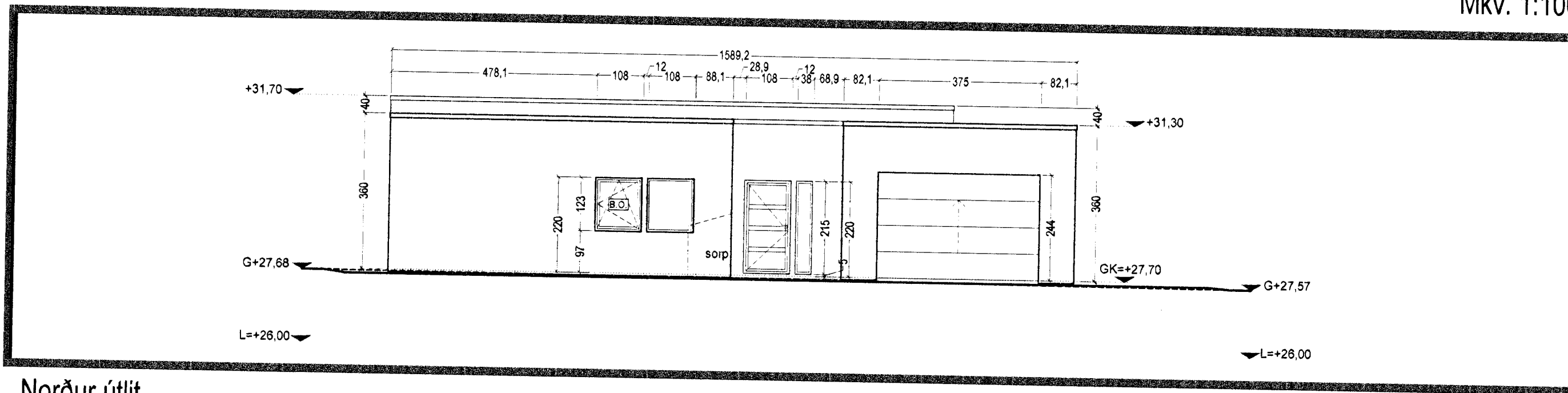
Suður útlit

Mkv. 1:100



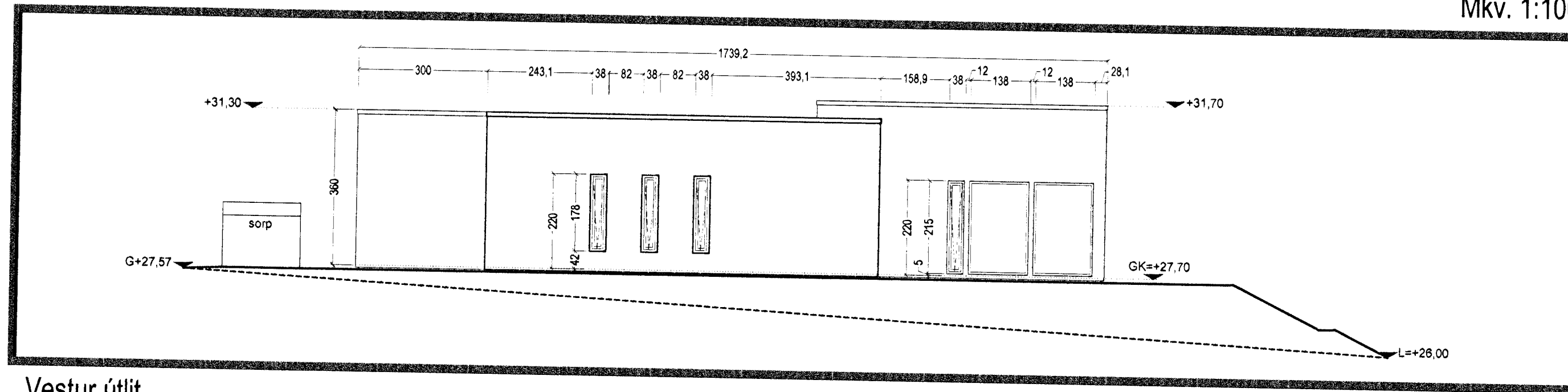
Austur útlit

Mkv. 1:100



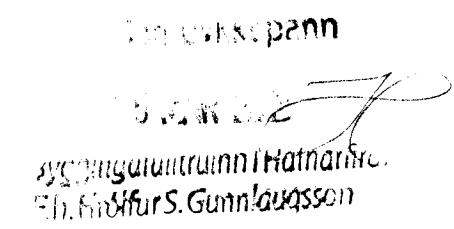
Norður útlit

Mkv. 1:100

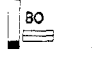


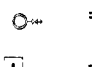


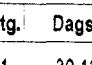


Vestur útlit

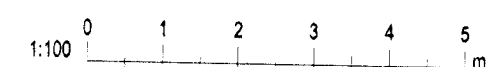
Mkv. 1:100



 KRARK
 Sýningarumræddur í Hafnarfjörð
 E. S. Sifur S. Gunnlaugsson

Tákn

GN	= Gólfniðurfall	Brunatákn
PN	= Þakniðurfall	Vaggir og hæðaskil
SN	= Svalniðurfall	EI60
LR	= Loftfræsting	EI90
VLR	= Vefknúin loftfræsting	A-EI60
PK	= Póstkassar	A-EI120
NL	= Neyðarjós	REI60
BO	= Björgunarpop	REI120
R	= Reykskynjar	A-REI120
HSL	= Handslökkvitæki	
ÚT	= Merktur útgangur	
	= Feilistigi við björgunarpop	Hurðir
	= Brunaslanga	E-CS30
	= Stigleiðsla	EI-CS60
	= Stigleiðsla út	Gluggar
	= Stjómstöð brunavíðvörðunarkerfis	E30
	= Inntak	
	= Bilastæði fyrir fatlaða	

Útg.	Dagsetning	Lýsing	Nafn
1	30.12.2011	Breyting á gluggum og innra skipulagi á baði.	RCM




 KRARK
 Kristinn Ragnarsson arkitekt ehf.
 Ármúli 1 - 4. hæð - 108 Reykjavík, Ísland
 S. 564 2255 - Fax. 544 4225
 Kt. 581298 3589 - www.krark.is - krark@krark.is

Kvistavellir 29
Hafnarfjörður
 Landnúmer: 204394 Staðgreinir: 1400-1-53900290
 Einbýlishús
Útlit
 Sérteikningar
 Hönnun: KR Verknúmer: 06095IE
 Verkefnastjóri: KR Mælikvarði: 1:100
 Teiknað: RCM Dagsetning: 15.06.2007
 Yfirfarið: KR Blað: Útgáfa:
 Samþykkt:
 Kristinn Ragnarsson
 Kt. 120944 2669

A403