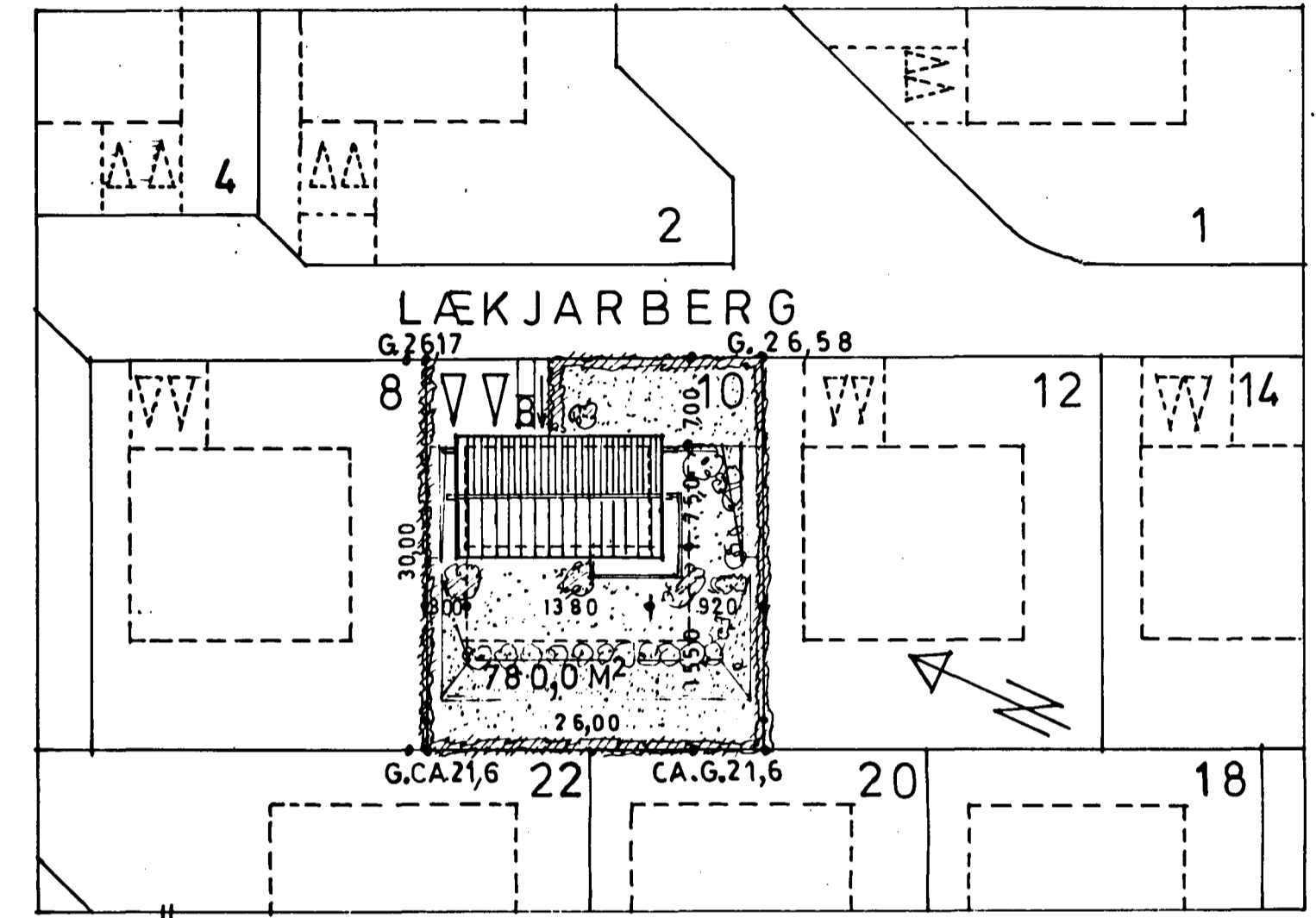
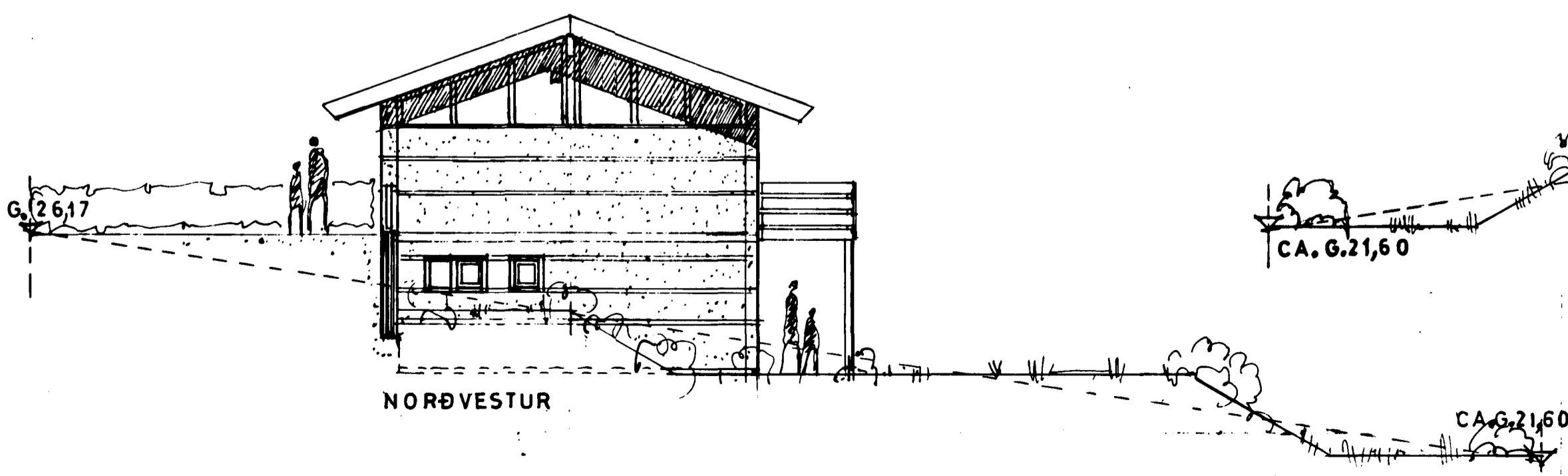
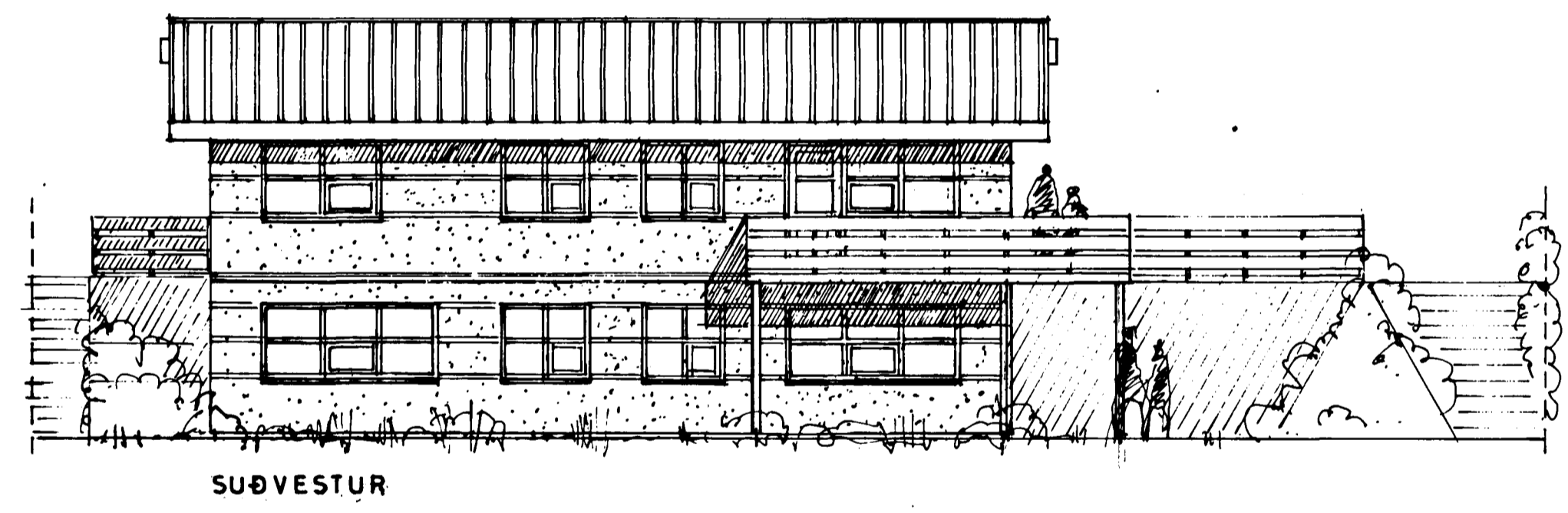
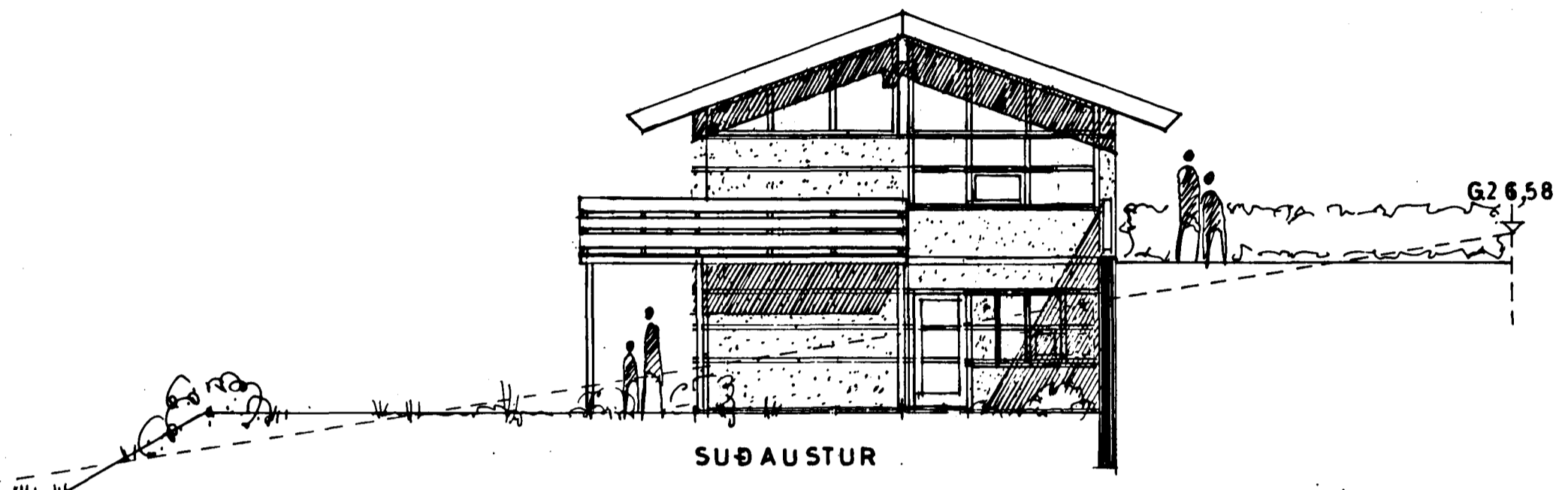
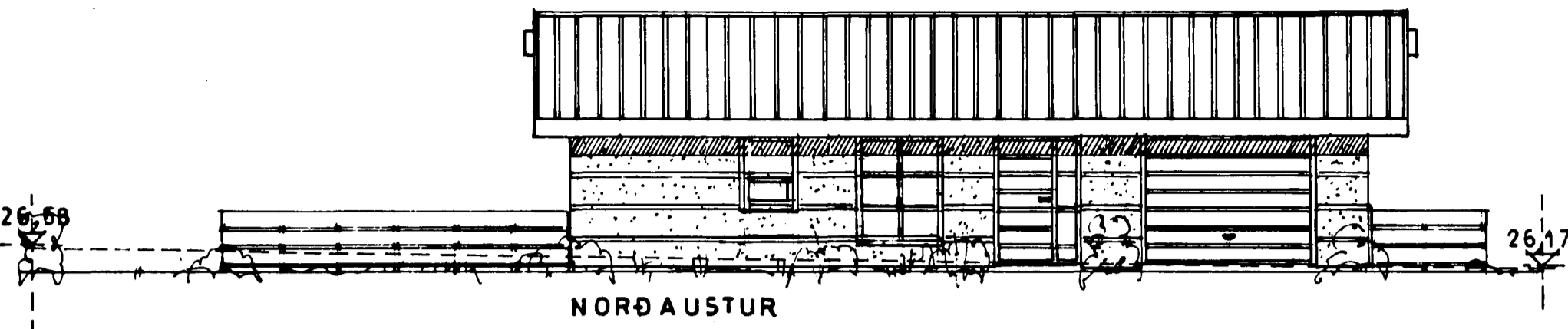
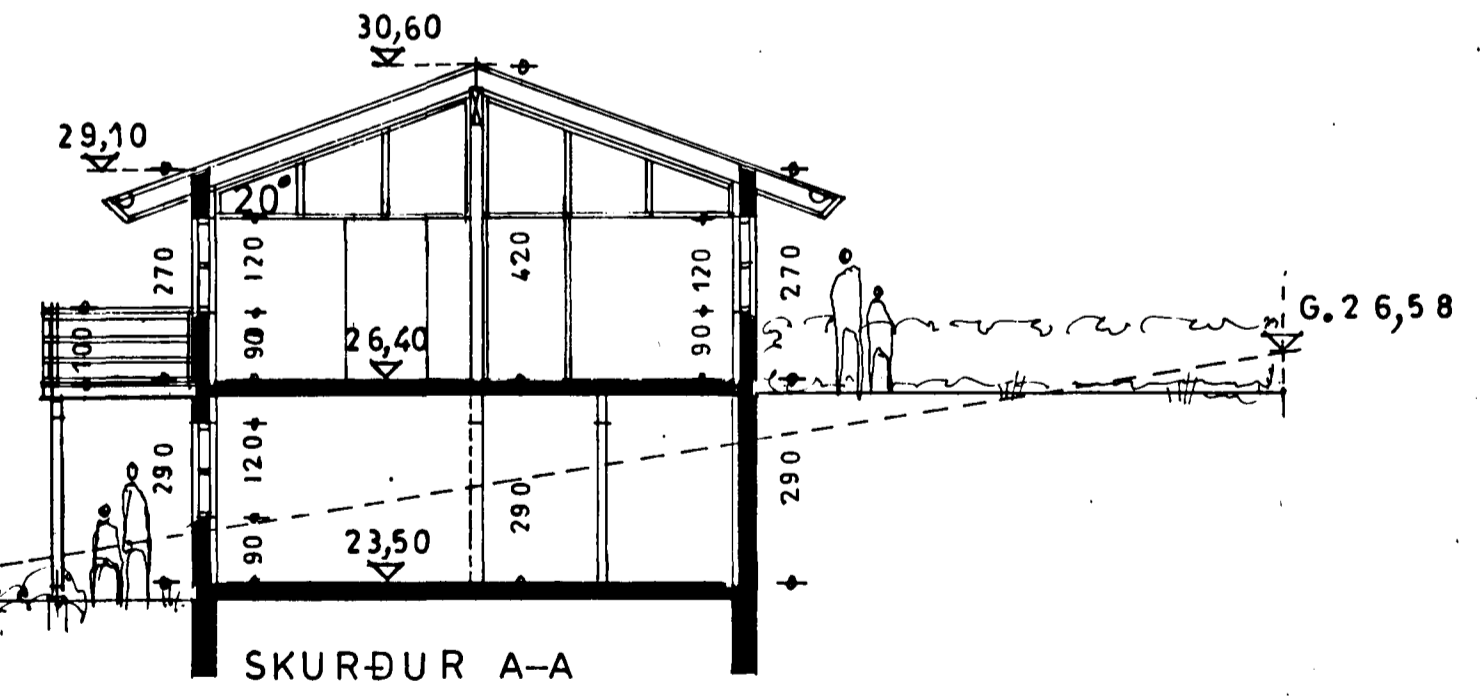


Sambykkt á fundi bygginga-  
ráðs 14/12/89  
nefndar p. 28/6 1990  
BYGGINGAFULLTRÚINN  
Í HAFNARFIRÐI



AFSTÖÐUMYND, M. 1:500

STÆRÐ HÚSS; ÍBÚÐ BÍLAGEYM. ALLS  
 $173,25\text{M}^2 + 33,75\text{M}^2 = 207,00\text{M}^2$   
 $540,80\text{M}^3 + 116,43\text{M}^3 = 657,53\text{M}^3$



**LÆKJARBERG 10, HAFNARFIRÐI**  
 ÚTLIT, SKURÐUR, AFSTÖÐUMYND, MÆLIKVARÐI 1:100 OG 1:500  
 VINNUSTOFAN HREFNUGÖTU 8, 105 REYKJAVÍK, SÍÐI 27320  
 SVERRIR NORÐFJÖRÐ ARKITEKT F.A.Í.  
 Sverrir Norðfjörð BR. 8.12.89  
 DES. 89  
 BR. 20.5.90