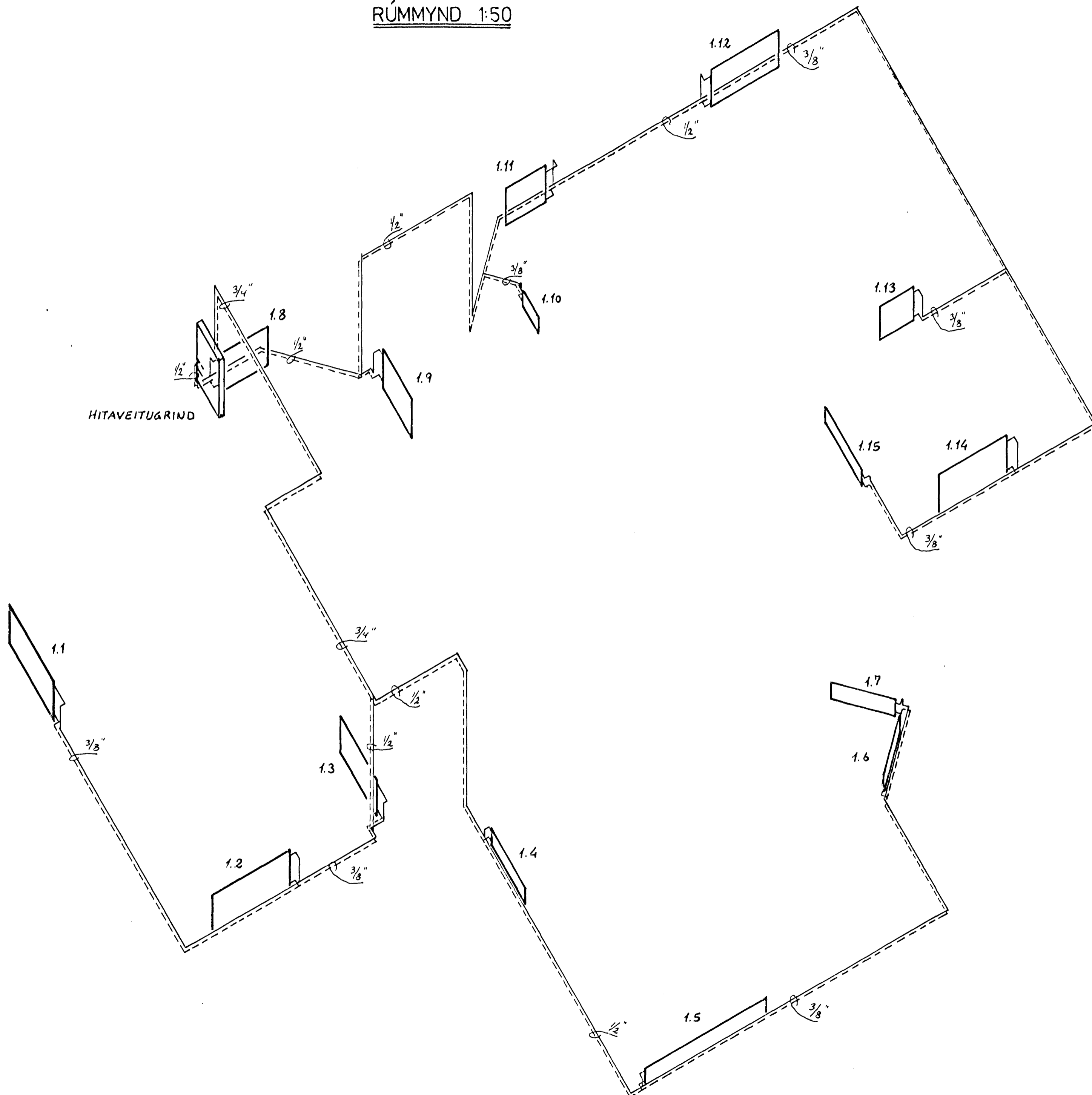
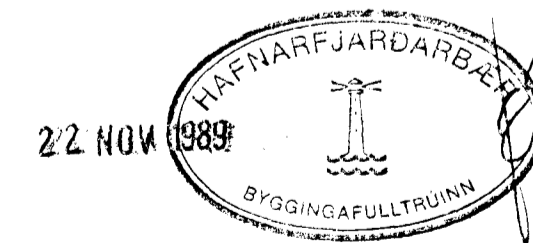


RÚMMYND 1:50



OFNASKRÁ  $\Delta T = 40^\circ C$

nr.	Kcal/h	mesta hæð	mesta lengd	stútar
1.1	2.500	700	1.600	AB
1.2	1.500	700	1.600	AB
1.3	810	700	1.300	AB
1.4	940	300	1.200	CD
1.5	1.960	300	2.500	CD
1.6	1.020	300	1.300	CD
1.7	1.020	300	1.300	CD
1.8	900	700	1.000	CD
1.9	800	700	1.000	CD
1.10	210	300	600	AB
1.11	1.010	700	800	CD
1.12	1.170	700	1.400	AB
1.13	540	700	700	AB
1.14	1.170	700	1.400	AB
1.15	1.020	300	1.300	CD



**VERKFRÆDISTOFA** HALLDÓRS HANNESSONAR S. 91-54355  
SUDURGÖTU 14 - 220 HAFNARFJÖRDUR

LÆKJARBERG 28 HAFNARFIRÐI  
HITALAGNIR, RÚMMYND OG OFNASKRÁ.

Mkv: 1:50  
Reiknað: A.H., V.B.  
Teiknað: *Sólin B.*  
Yfirfarð:

Vark: Blað nr: 4.2 Dags: Agúst '89