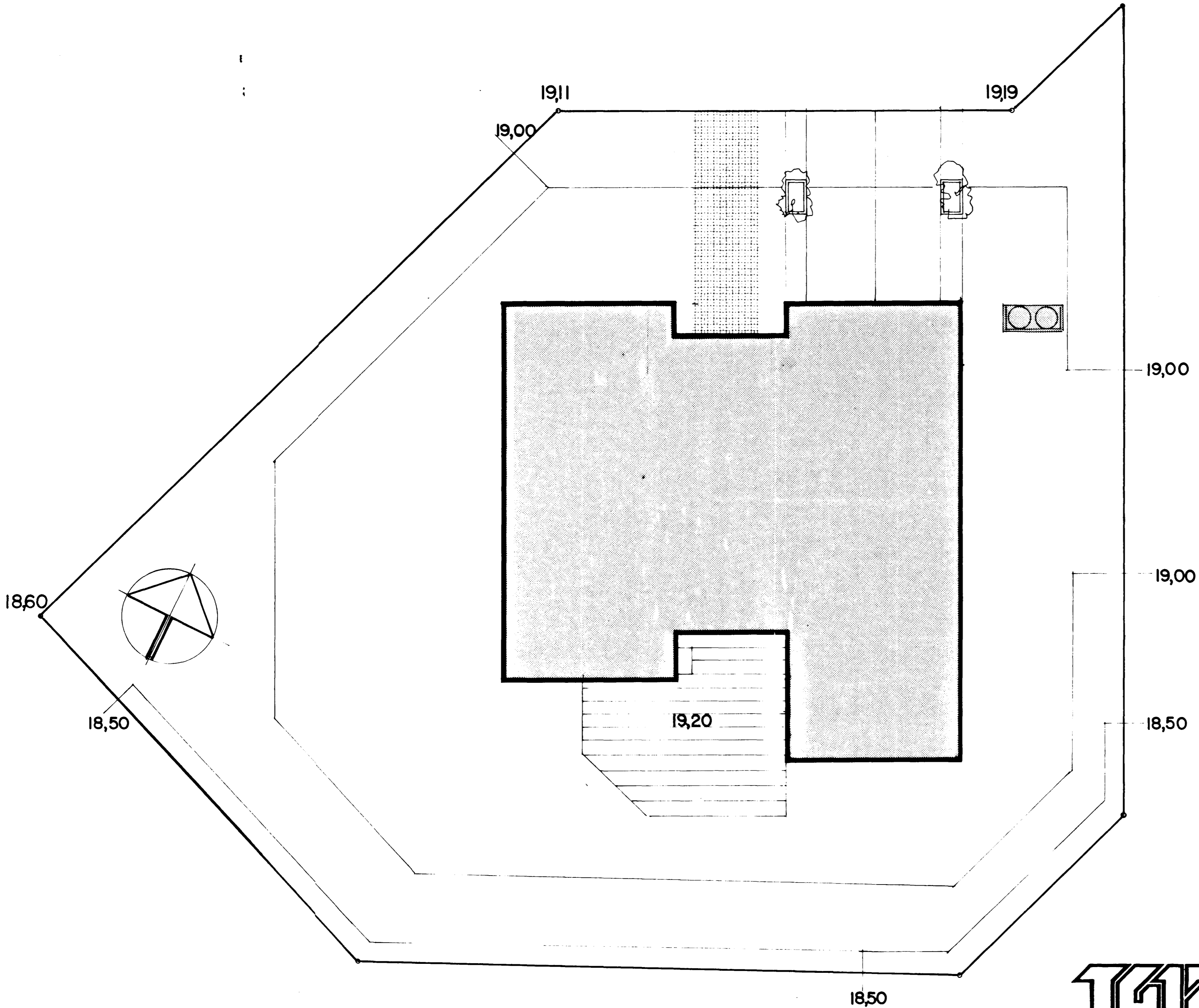


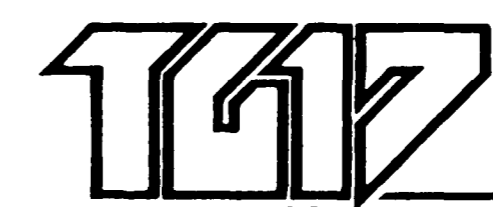
Samþykkt á fundi byggingar-
nefndar þ. 3. 11. 1988

BYGGINGAFULLTRÚINN
Í HAFNARFIRÐI



FLATARMÁL HÚSS	245,00 m ²
FLATARMÁL LÓÐAR	1013 m ²
NYTINGAR HL.	0,24
BÍLASTÆÐI	2
RÚMMÁL	796 m ³

HÆÐARLEGA LÓÐAR.



LÆKJARBERG 32 BL3