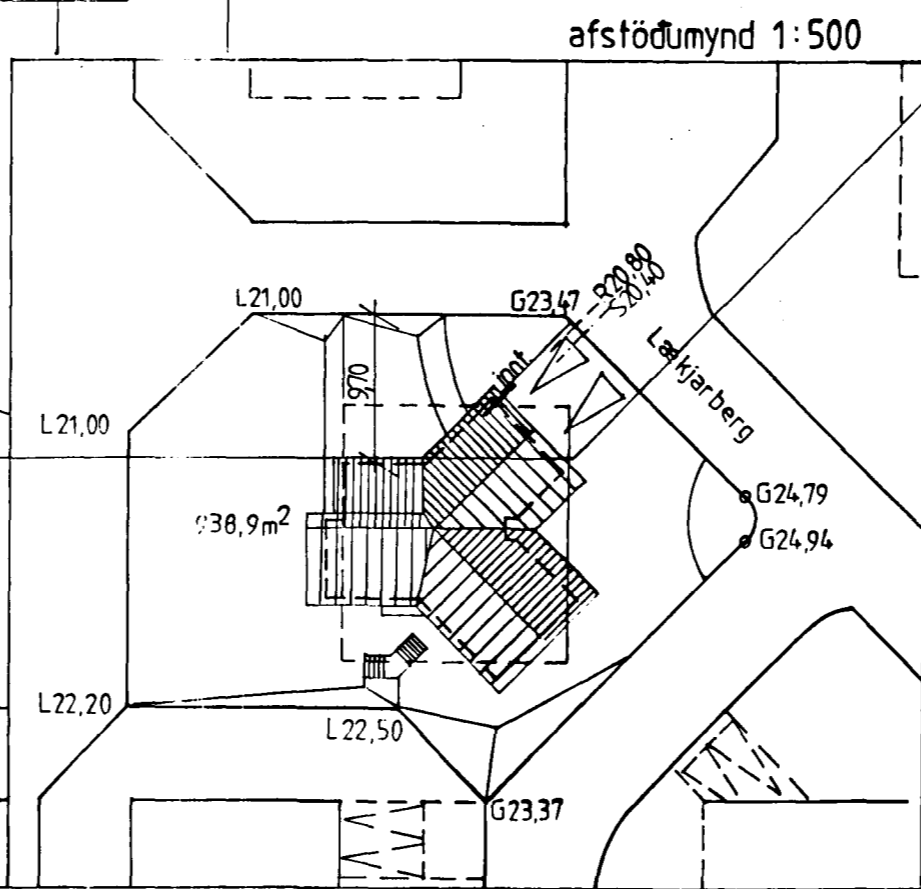
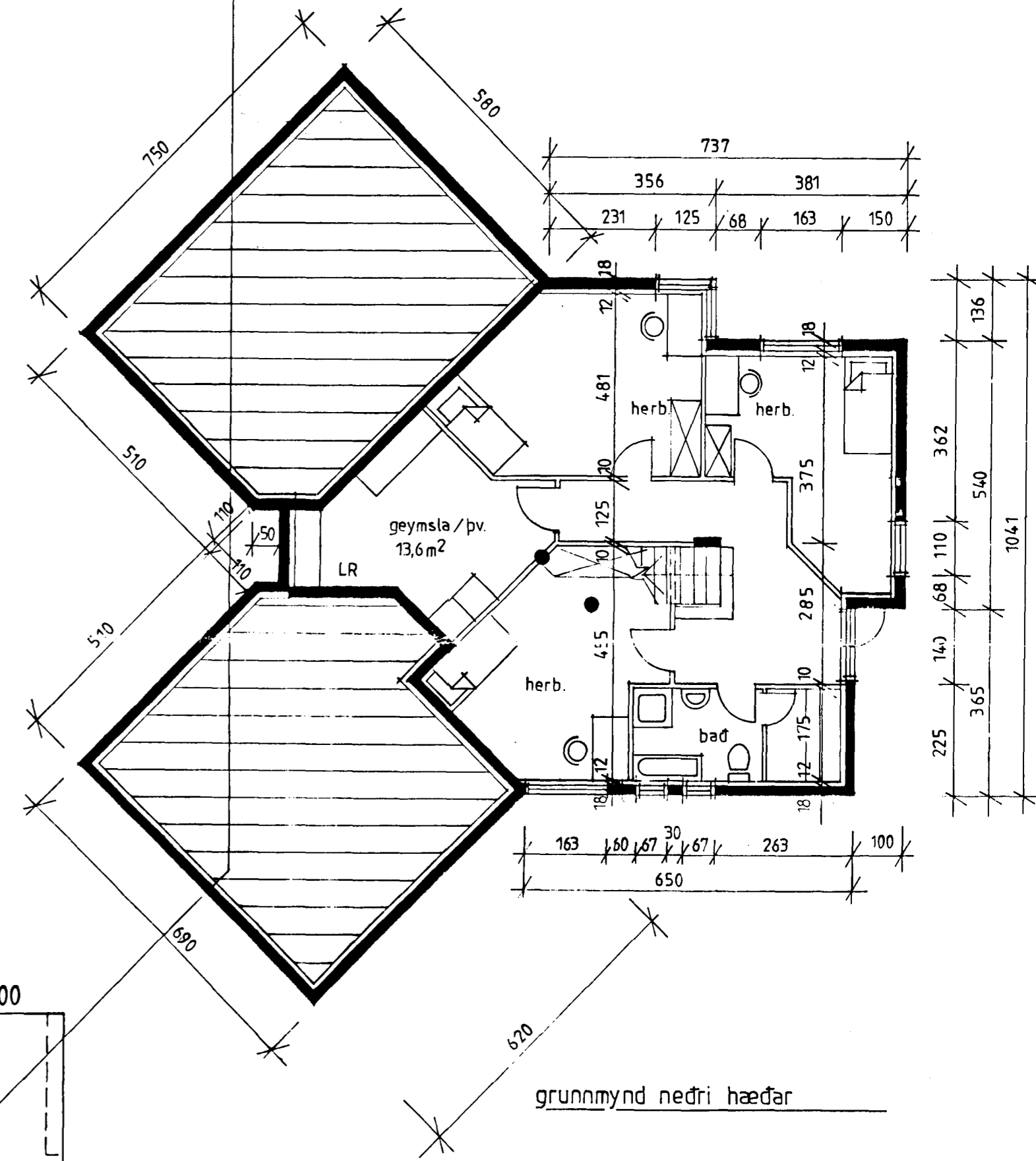
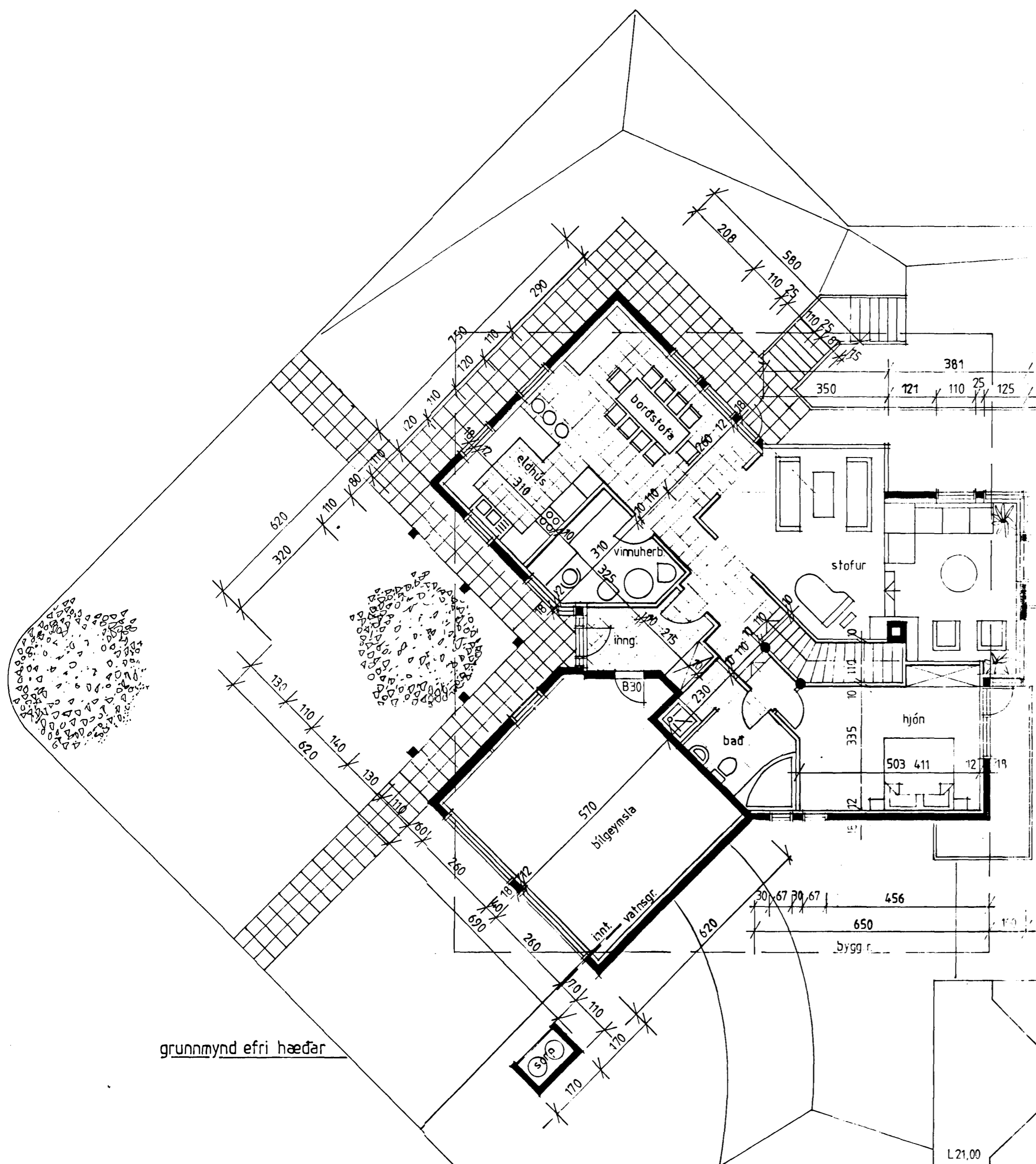


Samþykkt á fundi bygginga-  
nefndar þ. 29.16 1994  
BYGGINGAFULLTRÚINN  
I HAFNARFIRDI  
Sigríður Halldóttir



grunnmynd efri hæðar

grunnmynd neðri hæðar

afstöðumynd 1:500



rúmmál: 773m<sup>3</sup>      flatarmál: efri hæð 130 m<sup>2</sup>  
neðri — 87 m<sup>2</sup>  
frádr stigi 5 m<sup>2</sup>  
samtals 212 m<sup>2</sup>  
bílgeymsla 46 m<sup>2</sup>  
all's 258 m<sup>2</sup>

Nikulás Ólfar Músson arkitekt,  
Vinnustofa Bíldshöfða 18, 112 Reykjavík, sími: 672 772

verkefni: Lækjarberg 52, Hafnarfirdi

teikning: grunnm. og afstöðumynd      dags/umt.: br 15.08.1991 neðri hæð  
jan. 1991      númer: br 02.06.1994 badherb.

skali: 1:100 1:500      Rb/SB: | | | |

*Nikulás Ólfar Músson*