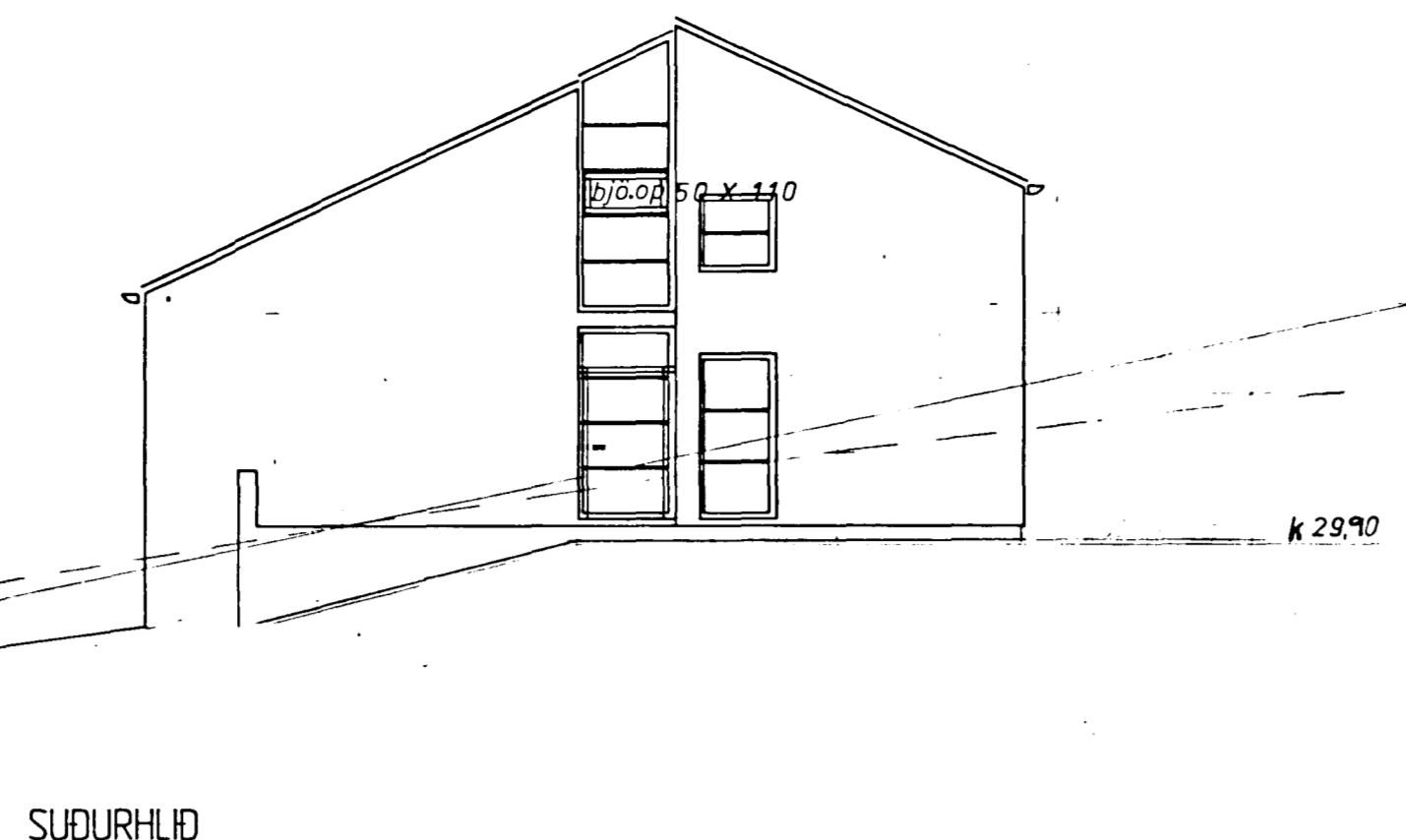
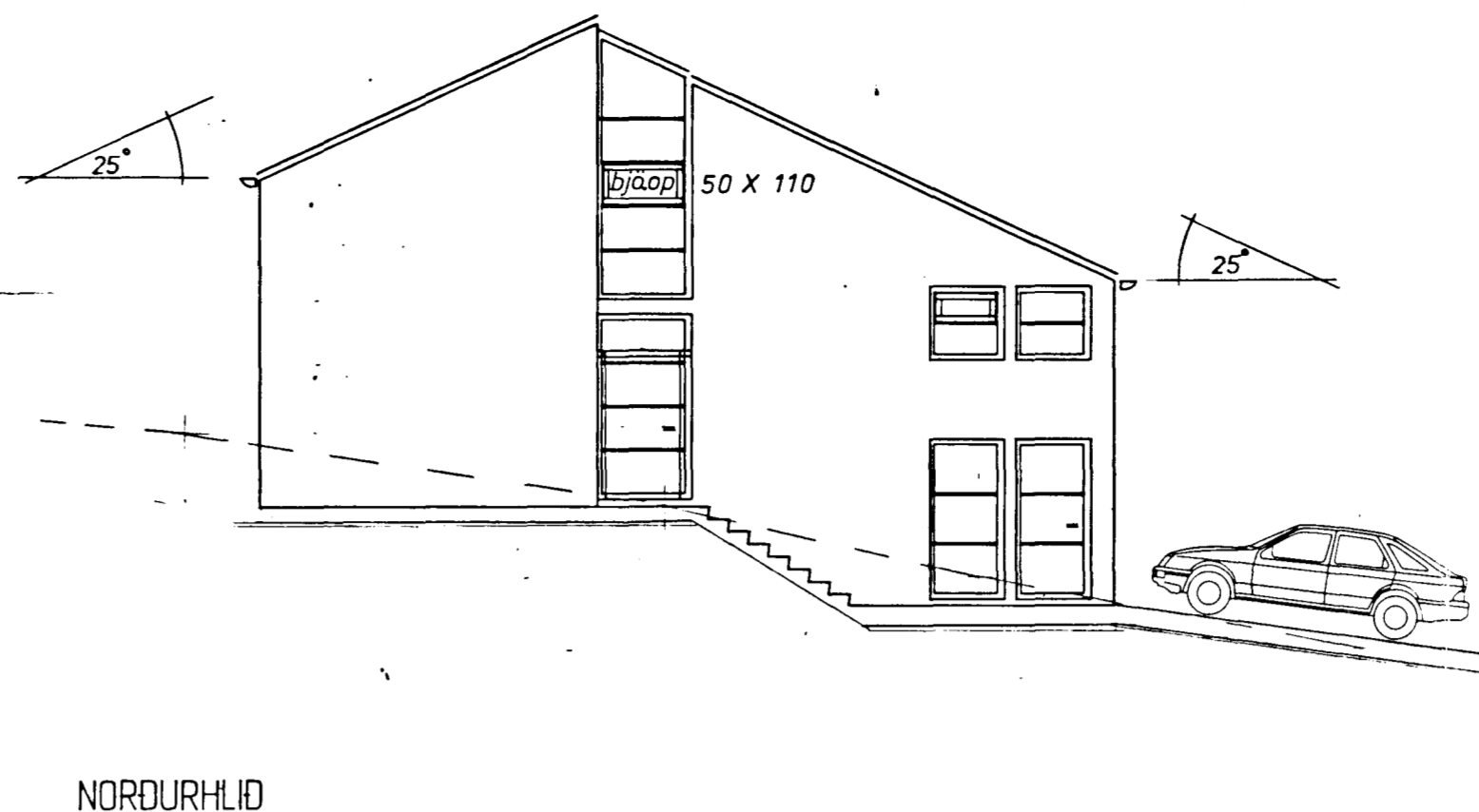


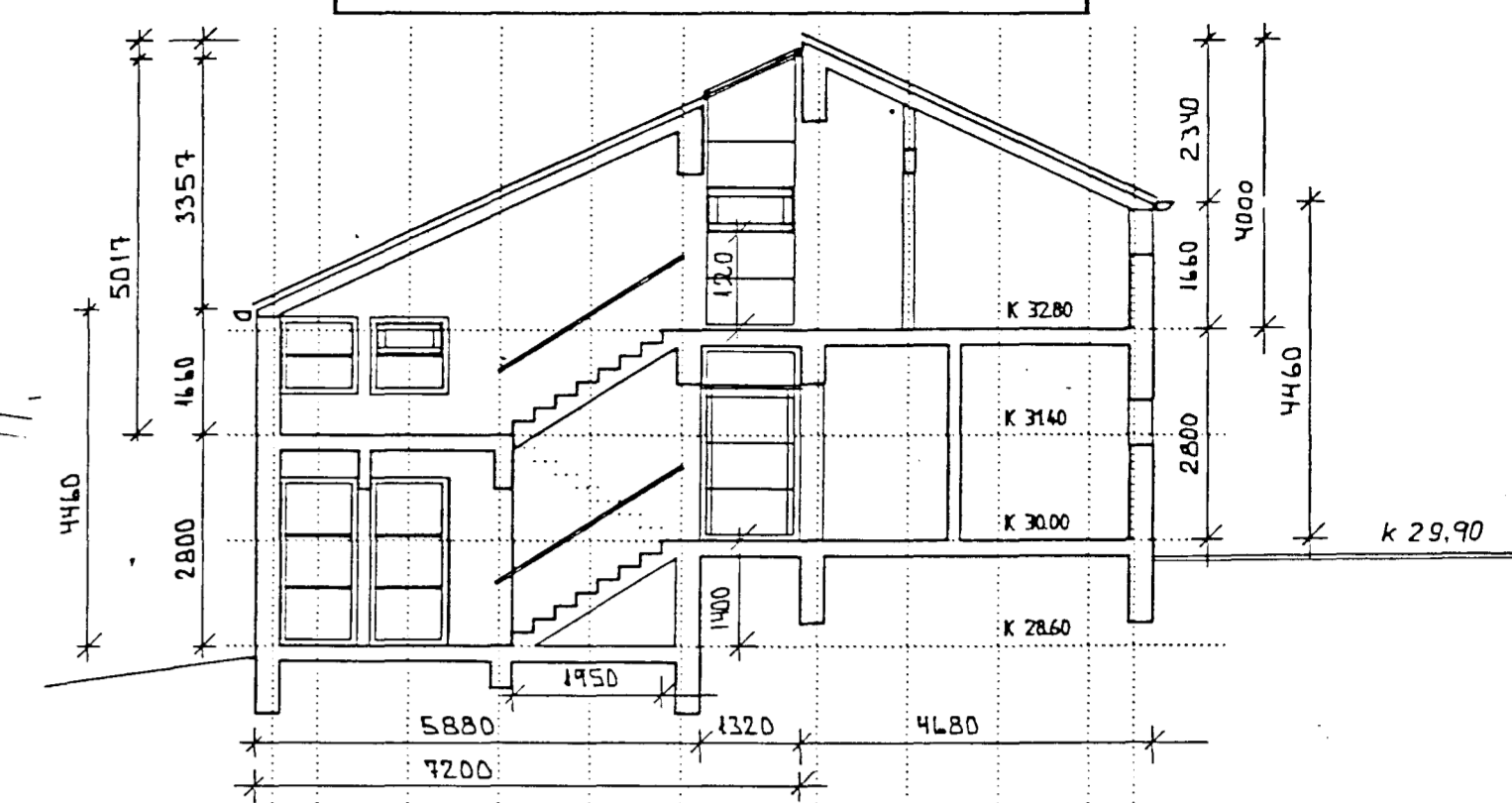
VESTURHLID



SUÐURHLID



NORÐURHLID

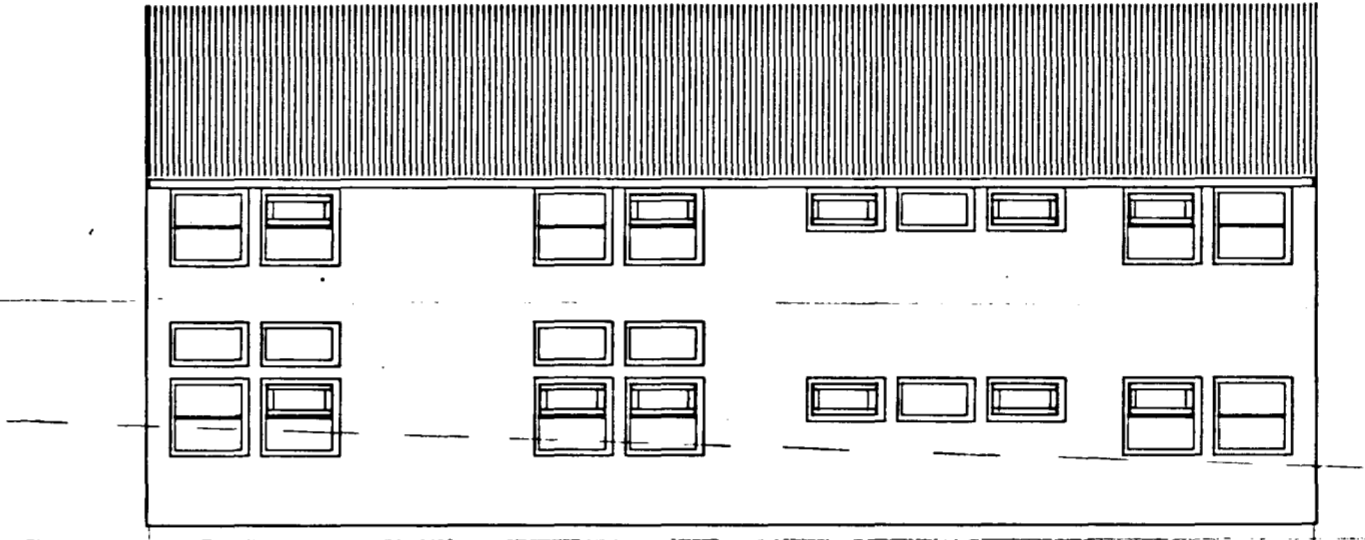
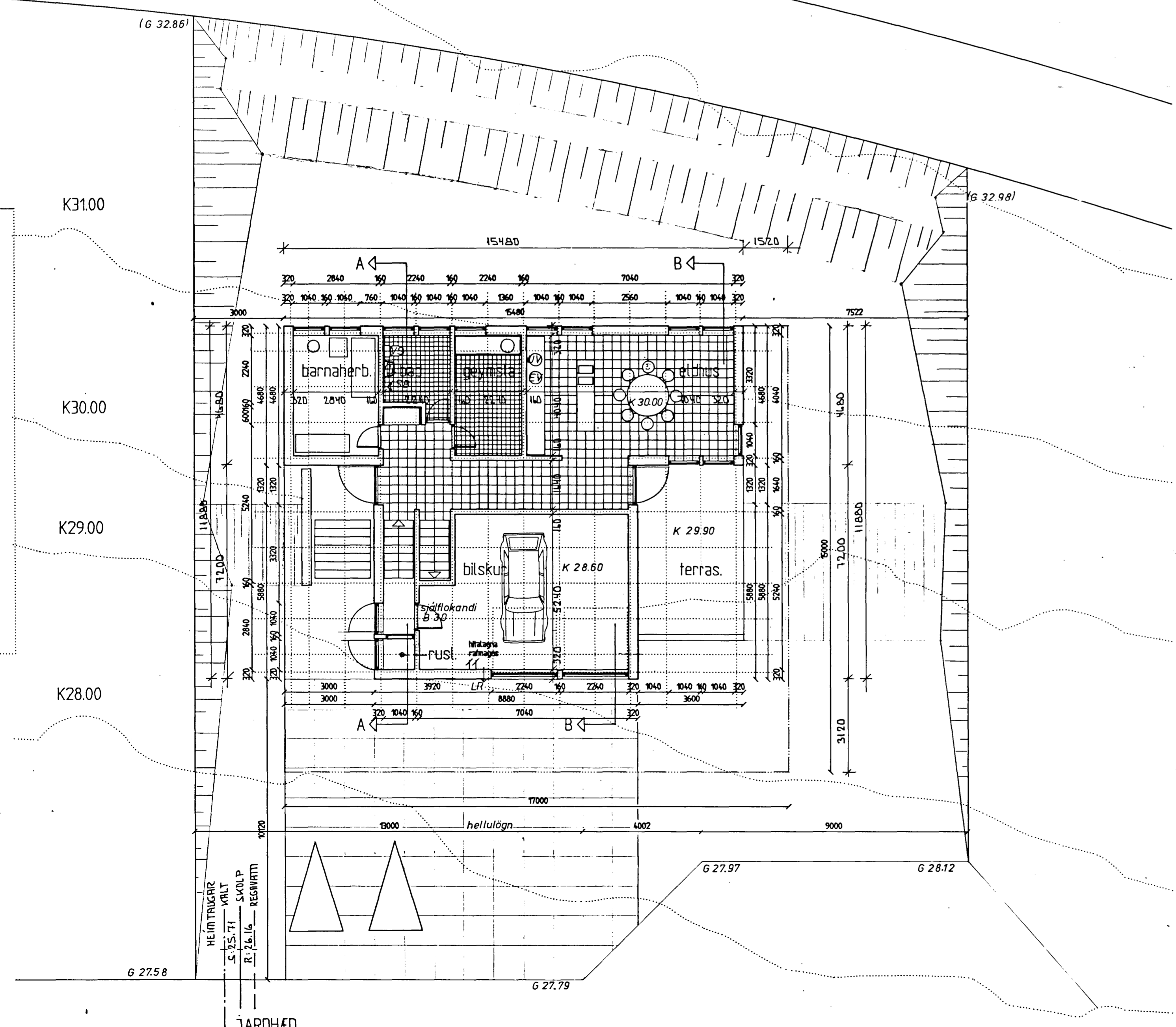


BVERSURDARMYND A - A

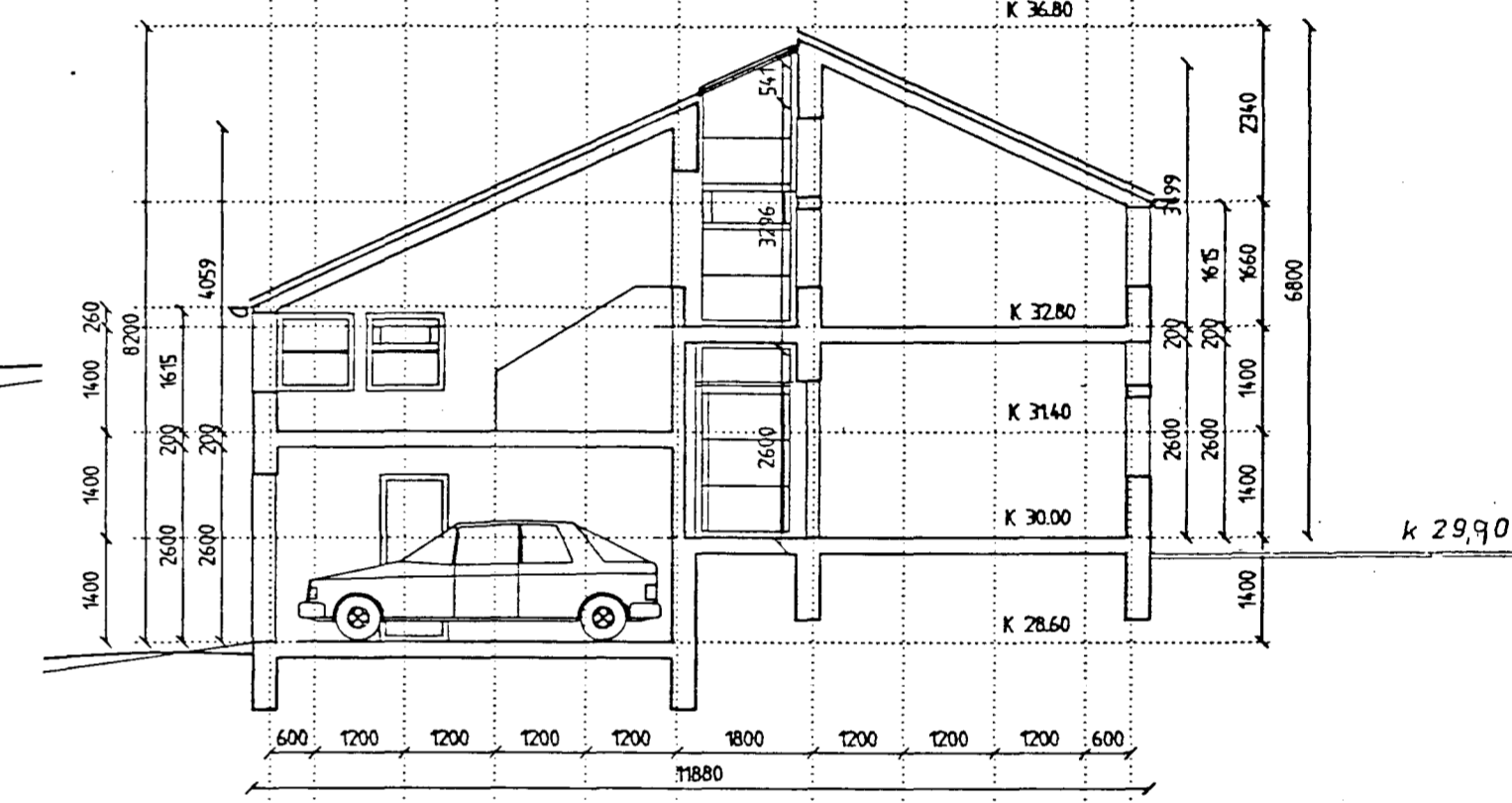
húsið er steinsteypt og múrhúðað að utan  
þak er léttbyggt og klætt með þakstáli

köfnunartölur	
útvæggi, vegid. meðaltal	0.8 w/m <sup>2</sup>
þak	0.2 - -
gölf	0.3 - -

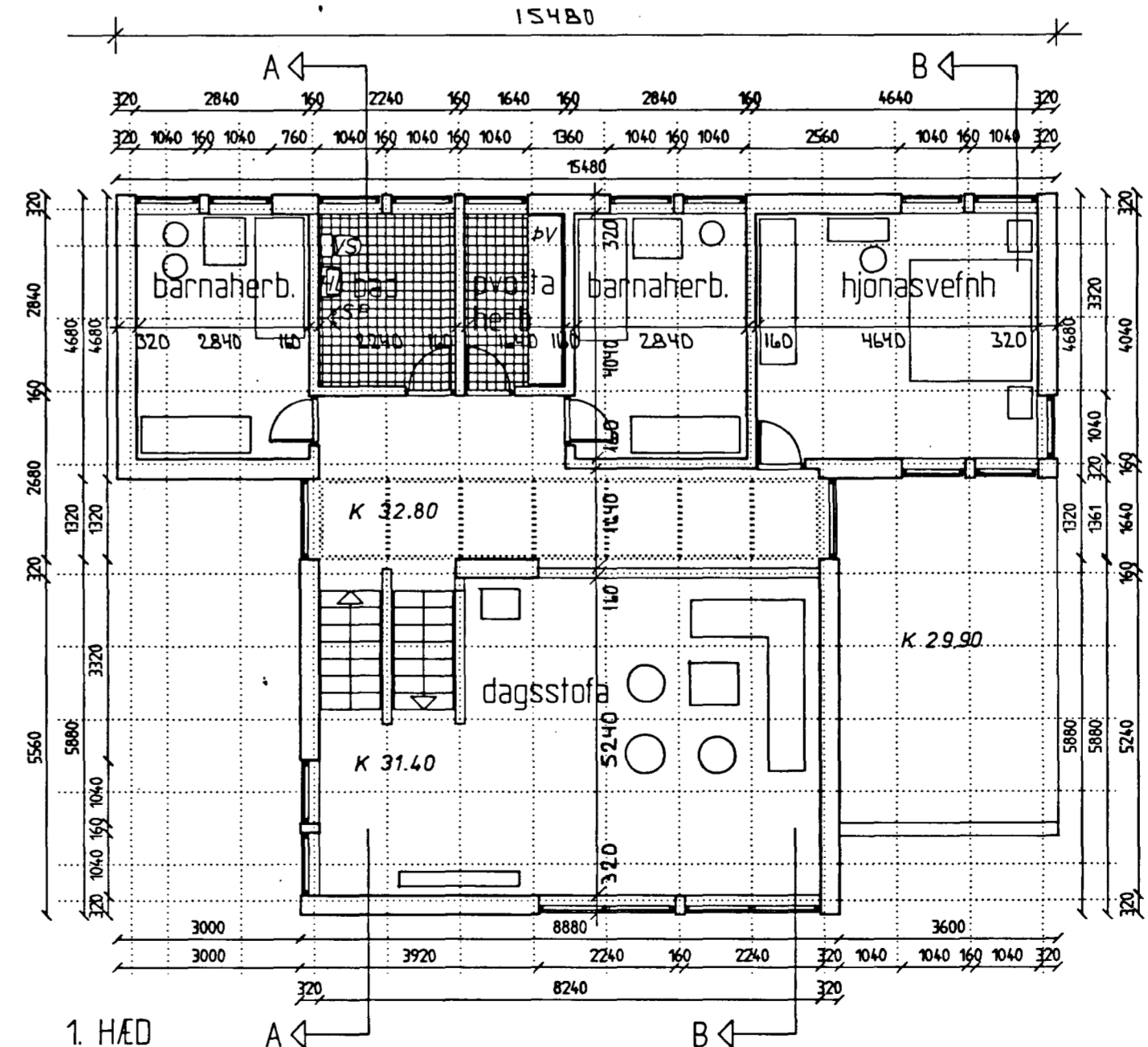
innhurdi eru 80x200  
úthurdi eru 100x200



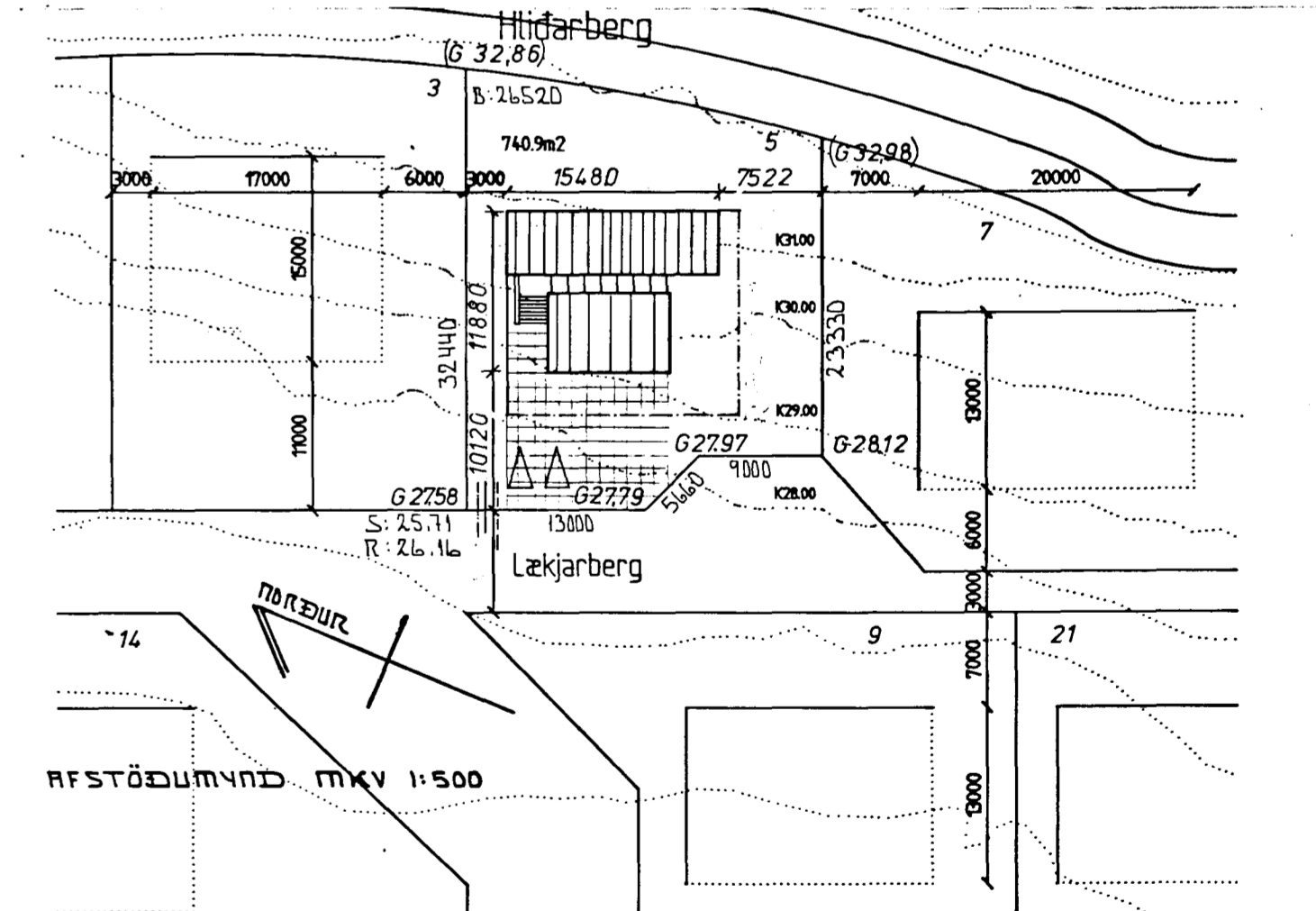
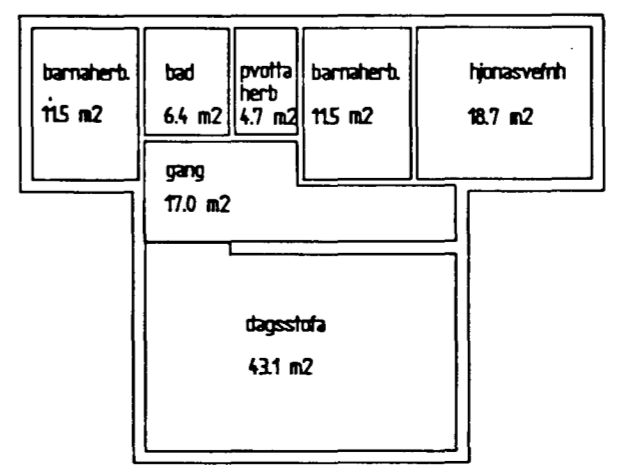
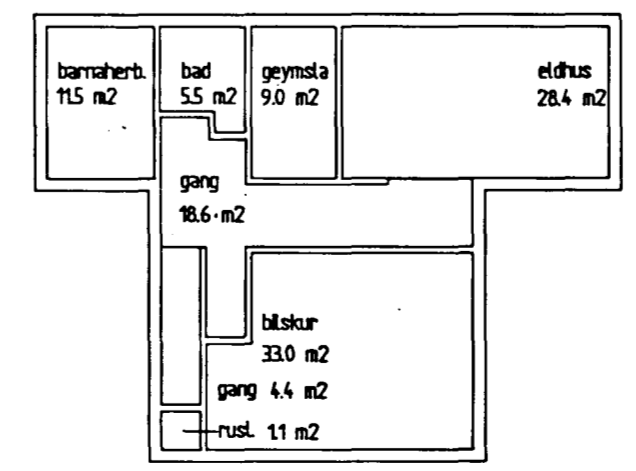
AUSTURHLID



BVERSURDARMYND B - B



1. HÆÐ



	netto	brutto	brutto m <sup>3</sup>
lbuð, jarchæð	78.5 m <sup>2</sup>		
Bitstur	34.0 m <sup>2</sup>	136.4 m <sup>2</sup>	(92.4 m <sup>3</sup> )
lbuð, 1. hæð	112.9 m <sup>2</sup>	136.4 m <sup>2</sup>	
Samtals	224.4 m <sup>2</sup>	272.8 m <sup>2</sup>	795.6 m <sup>3</sup>
lôðarstærð 740,9m <sup>2</sup>			
nýtingarhlutfall 0,37			

SAC GUNNAR INGVARSON  
SUÐURLVANGI 14  
220 HAFNARFJÖRÐUR

JOURN.NR. 610 A1  
MÁL 1:100 / 1:500  
SÖN. NE/AWS  
TECH.NR. 101

DATE LÆKJARBERG 5 - HAFNARFJÖRÐUR - ISLAND  
REV. 04 07 1989  
REV.DATO 24.07.1989

HOLM & GRUT Holm & Grut A/S Nórregade 7A Telefon 33 13 92 05  
DK - 1165 København K Arkitekt MAA DK - 1165 København K Telefon 33 32 47 55  
TEKNIÐUNASTA SVEINS KARLSSONAR TFI  
BEJARFRÁUNI 2 220 HAFNARFJÖRÐUR