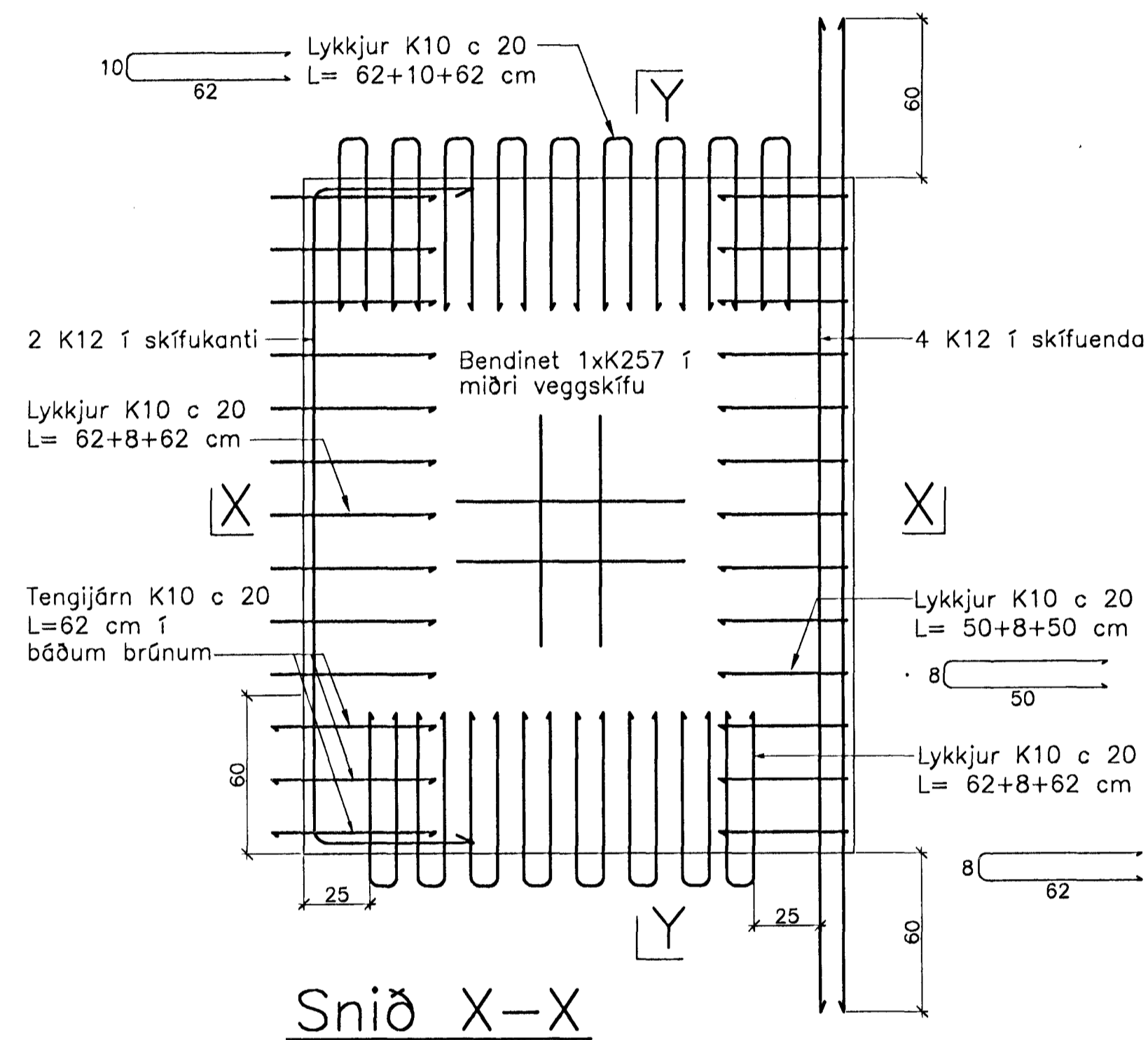
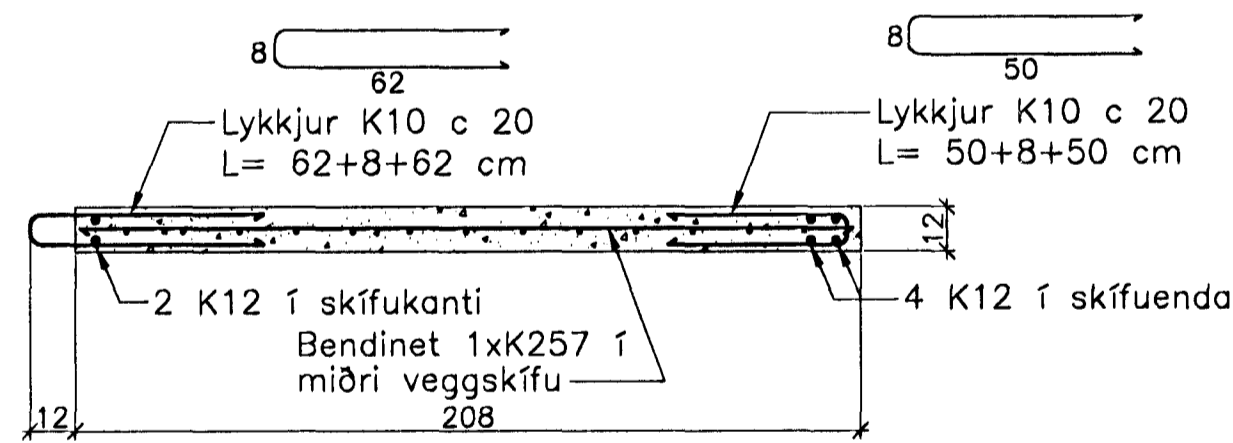


# JÁRNBENT STEYPA Innveggjæiningar 1:20

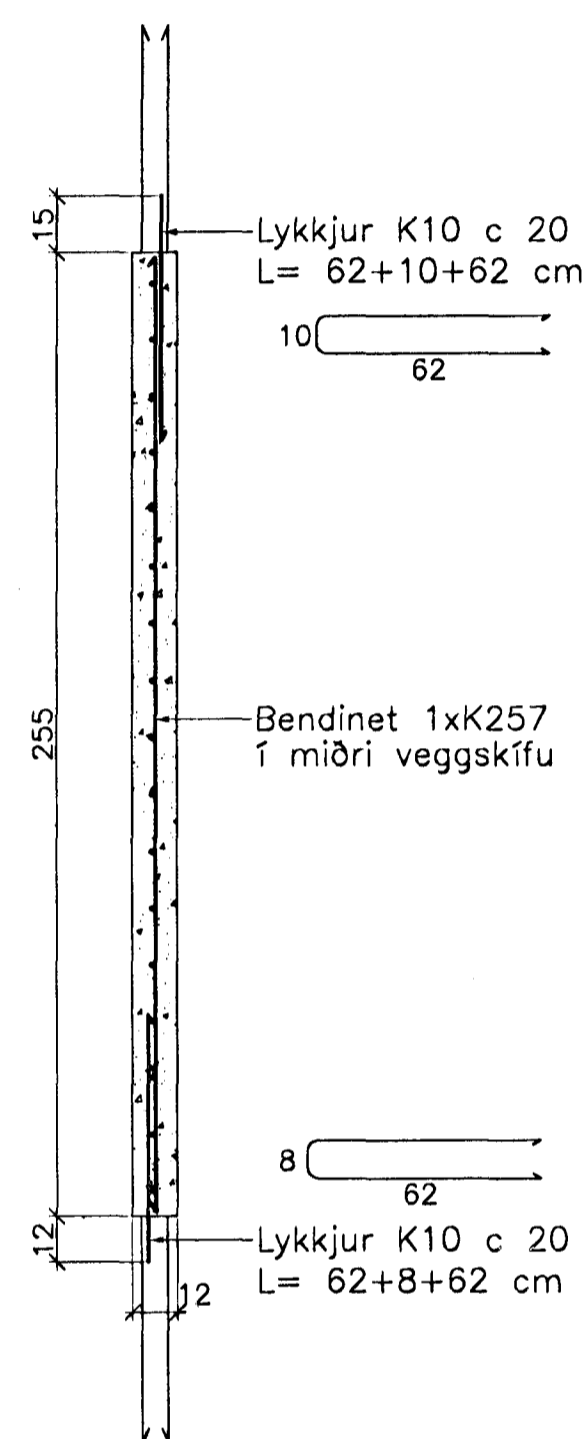
Innveggur IV.2.12.26  
Innveggur IV.3.12.26  
Hliðarmynd 1:20



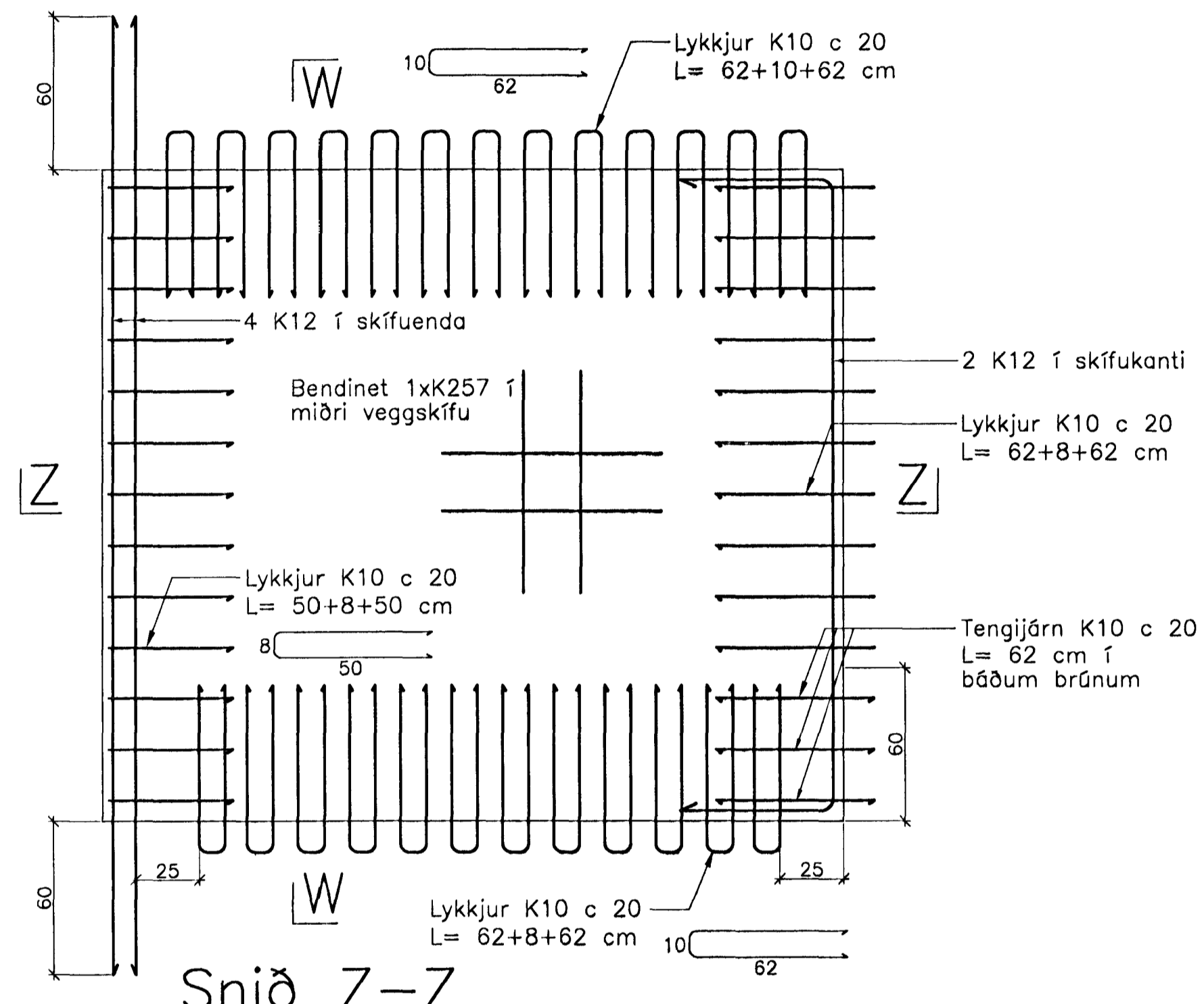
Snið X-X



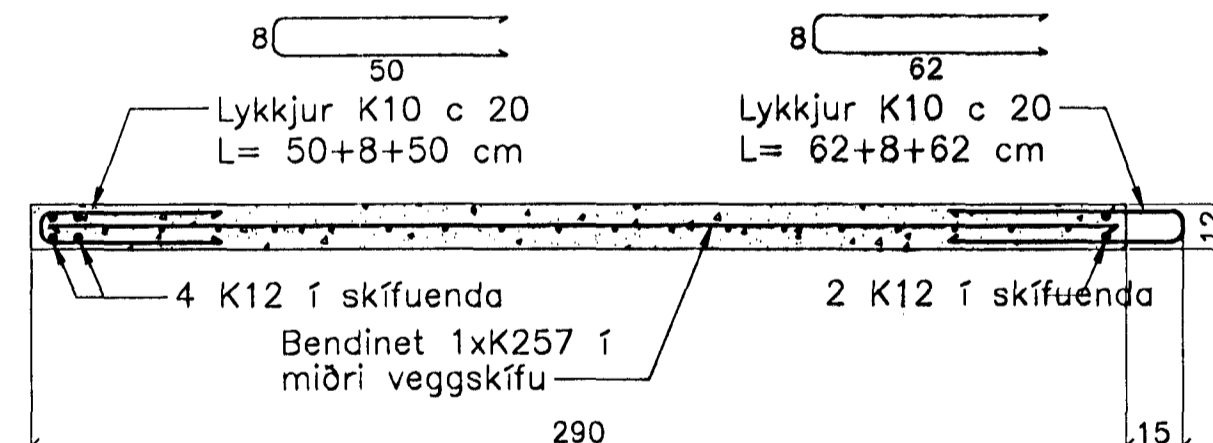
Snið Y-Y



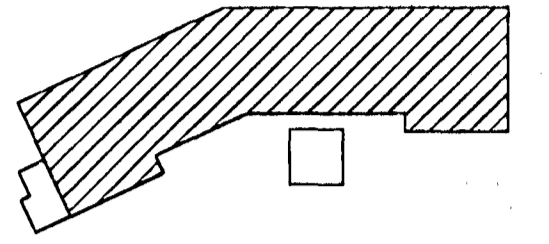
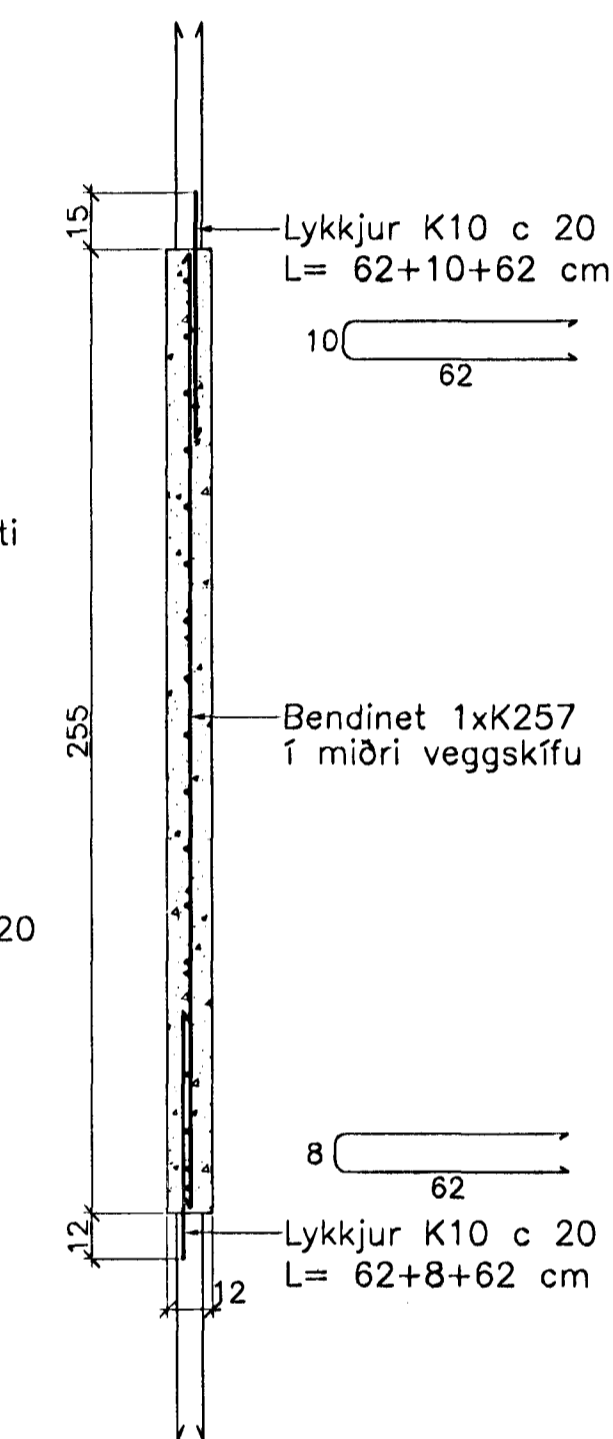
Innveggur IV.2.13.26  
Innveggur IV.3.13.26  
Hliðarmynd 1:20



Snið Z-Z



Snið W-W



Breytingar:

Athuga þarf sérstaklega staðsetningu lóðréttu K12 járnanna upp úr einingum, þar sem loftaplötturnar sitja 3 cm inn á veggjum beggja megin frá.

23 APR. 2005  
**TEIKNISTOFAN ÖDINSTORGI**  
 Byggingafræðingur / K.S.G.  
 E.h. Sigurbjartur Halldórsson

Verkefni: Lækjargata 26 Háfnarfirði  
 Heiti: Járn bent steypa: Innveggjæiningar á 2. og 3. hæð  
 Hönnun: Vífill Oddsson verkfræðingur

VÍFILL ODDSSON VERKFRÆÐINGUR  
 kt. 101237-3629 FVFI - FRV  
 ÖDINGSGÖTU 7 REYKJAVÍK FAX: 510-2201  
 SIMI: 510-2200

M. 1:20  
 R. V.O./K.S.G.  
 T. K.S.G.  
 Dags. apríl 2005 Nr. 967-1-50