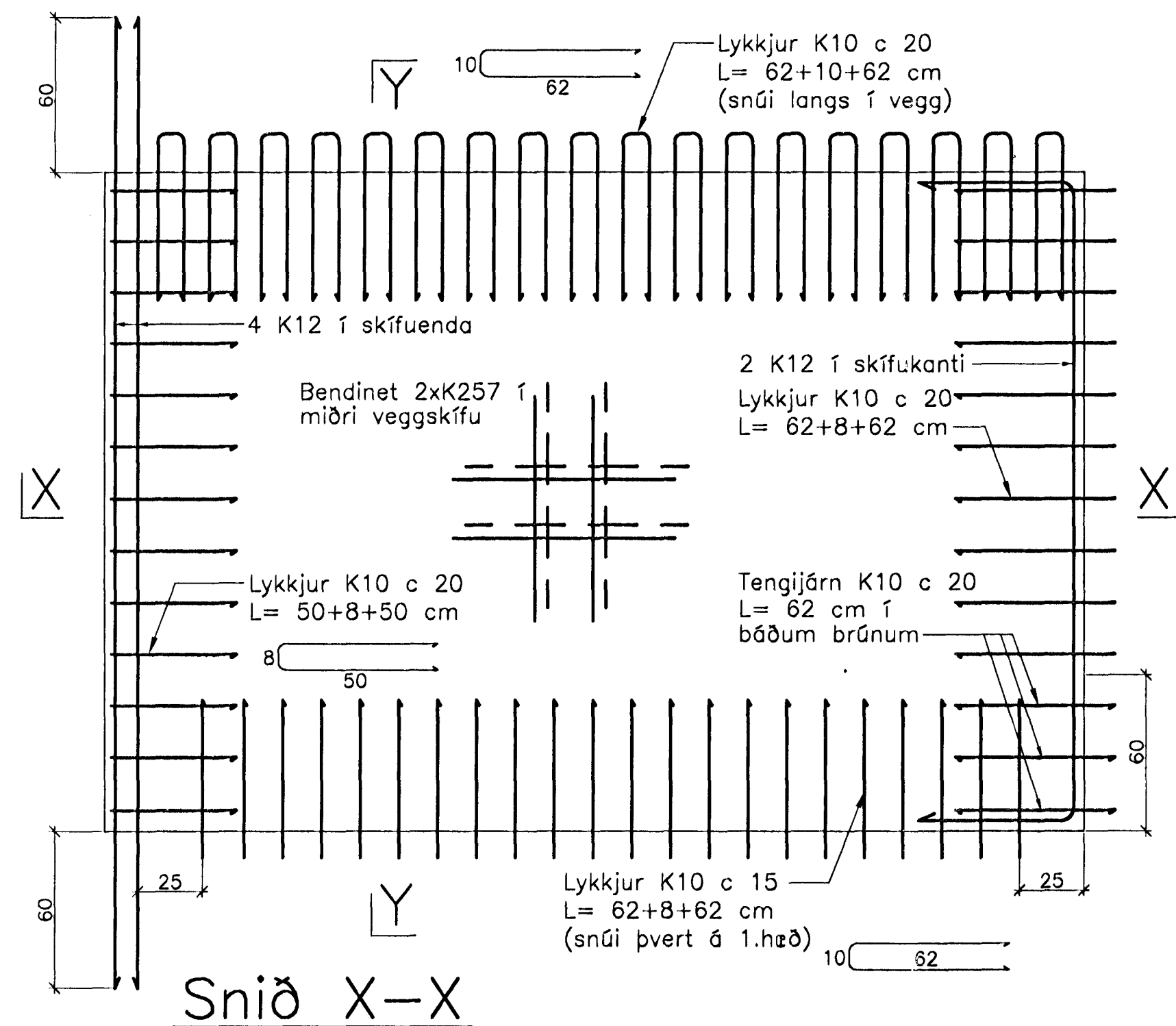


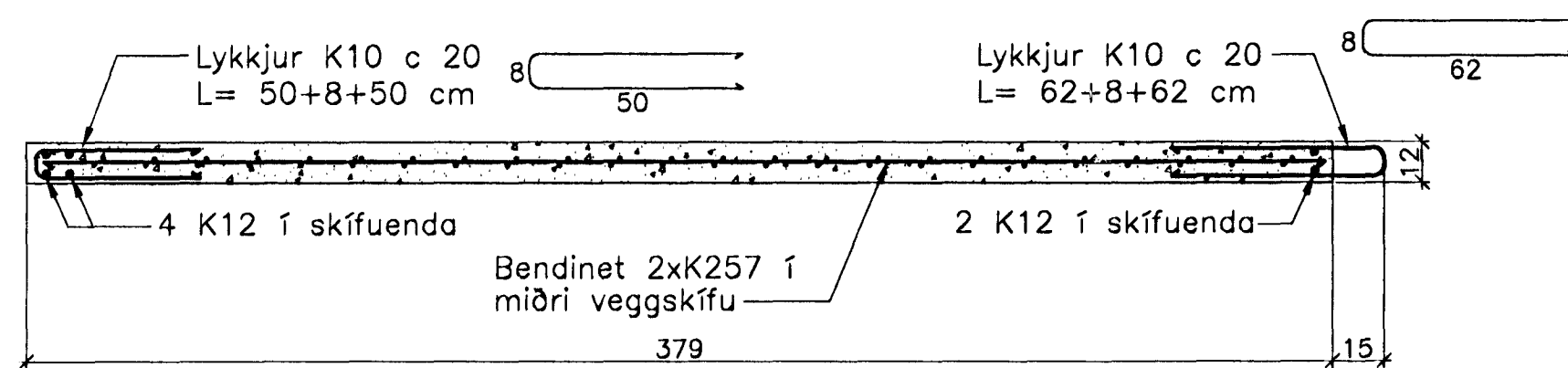
JÁRNBENT STEYPA

Innveggjaeiningar 1:20

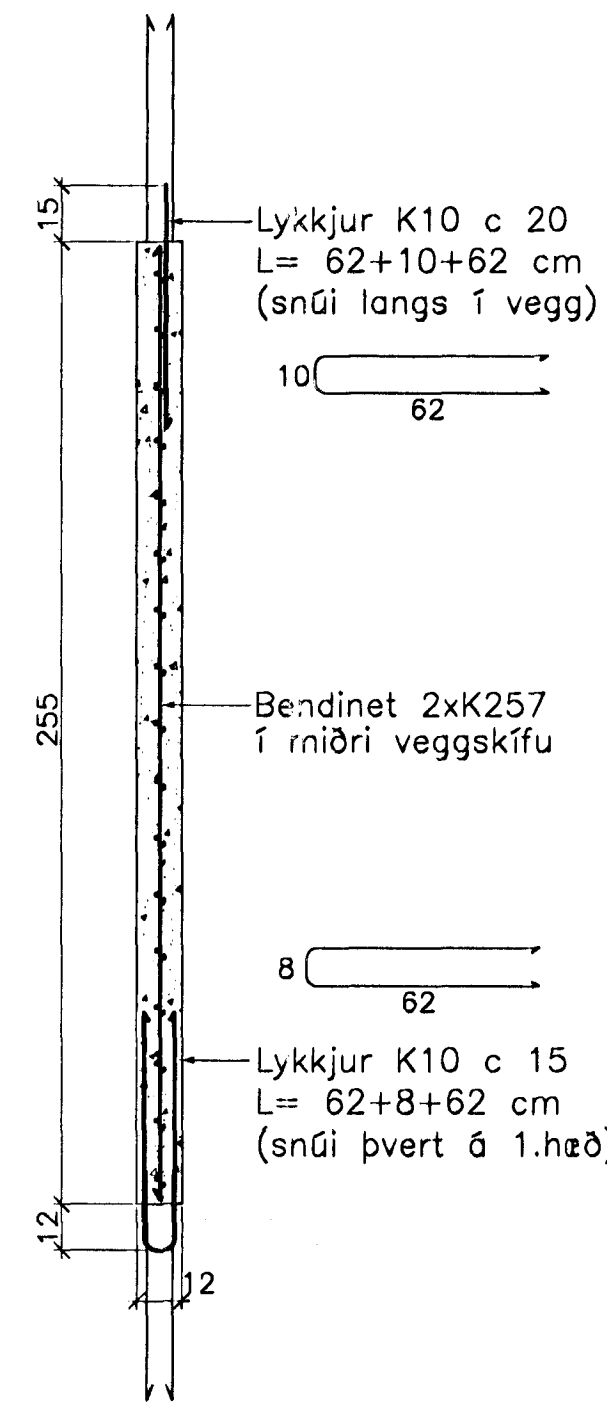
Innveggur IV.1.14.28
Hliðarmynd 1:20



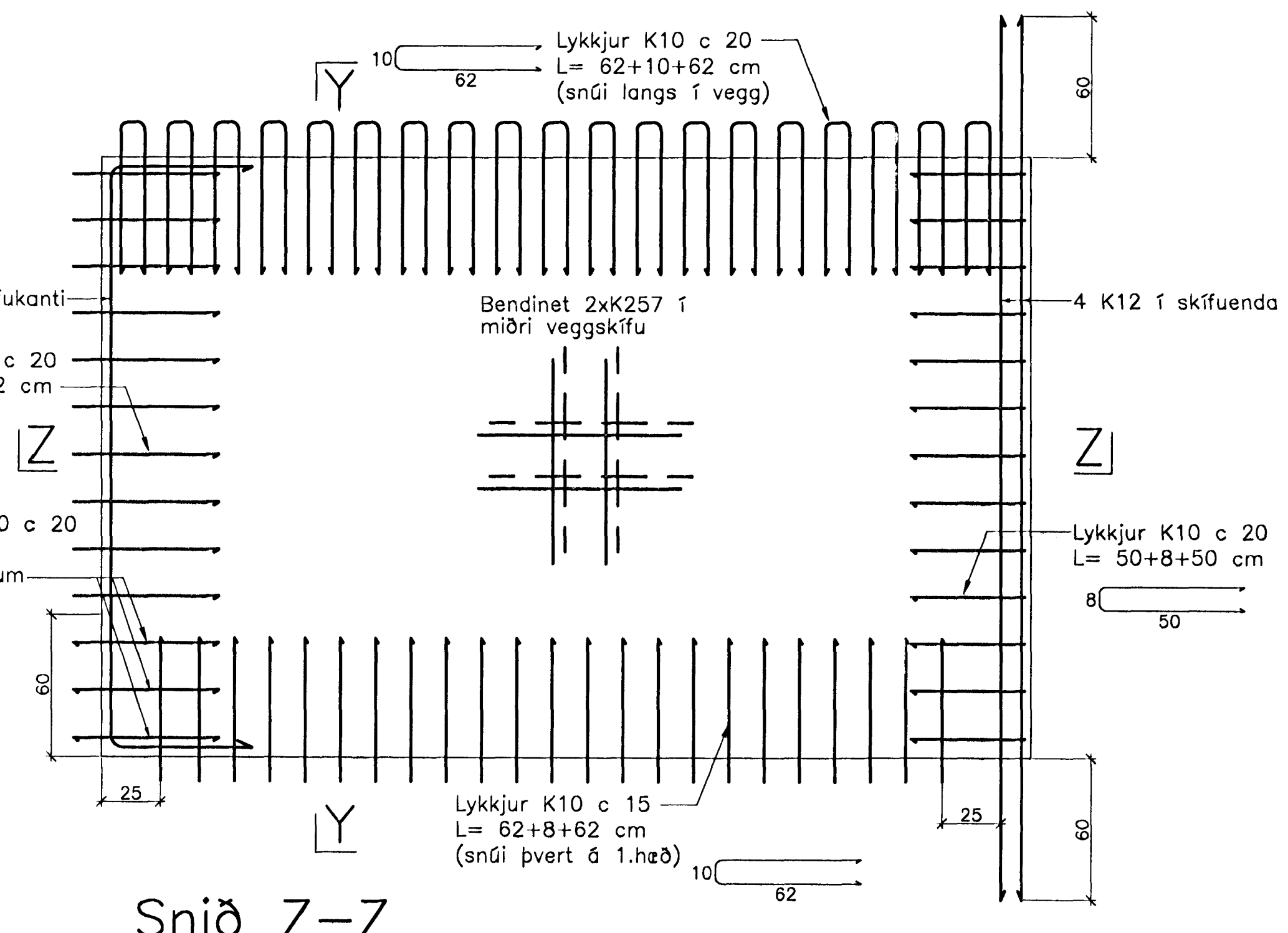
Snið X-X



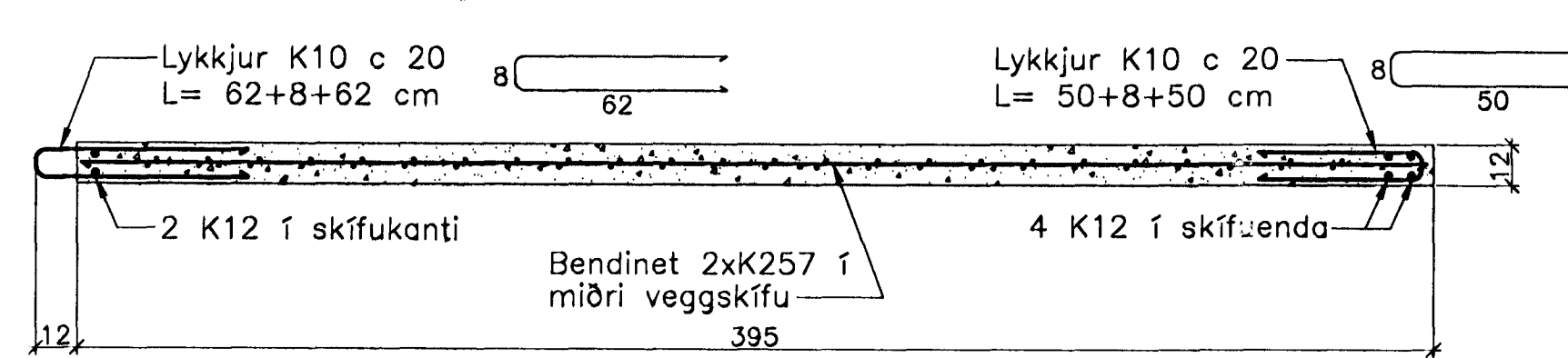
Snið Y-Y



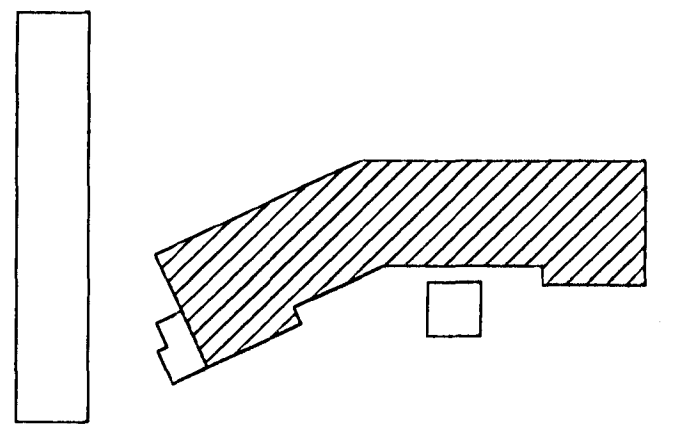
Innveggur IV.1.15.28
Hliðarmynd 1:20



Snið Z-Z



Athuga þarf sérstaklega staðsetningu lóðréttu K12 járnanna upp úr einingum, þar sem loftaplöturnar sitja 3 cm inn á veggjum beggja megin frá.



Breytingar:

Samþykkt þann
02 MAÍ 2005
Byggingafræðingur í Hafnarfirði
E.h. Sigurbjartur Halldórsson

TEIKNISTOFAN
ODINSTORGI

Verkefni: Lækjargata 28 Hafnarfirði

Heiti: Járbent steypa: Innveggjaeiningar
á 1. hæð

Hönnun: Vífill Oddsson verkfræðingur
Sími: 101237 3629

VÍFILL ODDSSON VERKFRÆÐINGUR
kt. 101237-3629 FVFI - FRV
SÍMI: 510-2200
ÓDINSGÖTU 7 REYKJAVÍK FAX: 510-2201

M. 1:20
R. V.O./K.S.G.
T. K.S.G.
Dags. mars 2005 Nr. 968-1-22