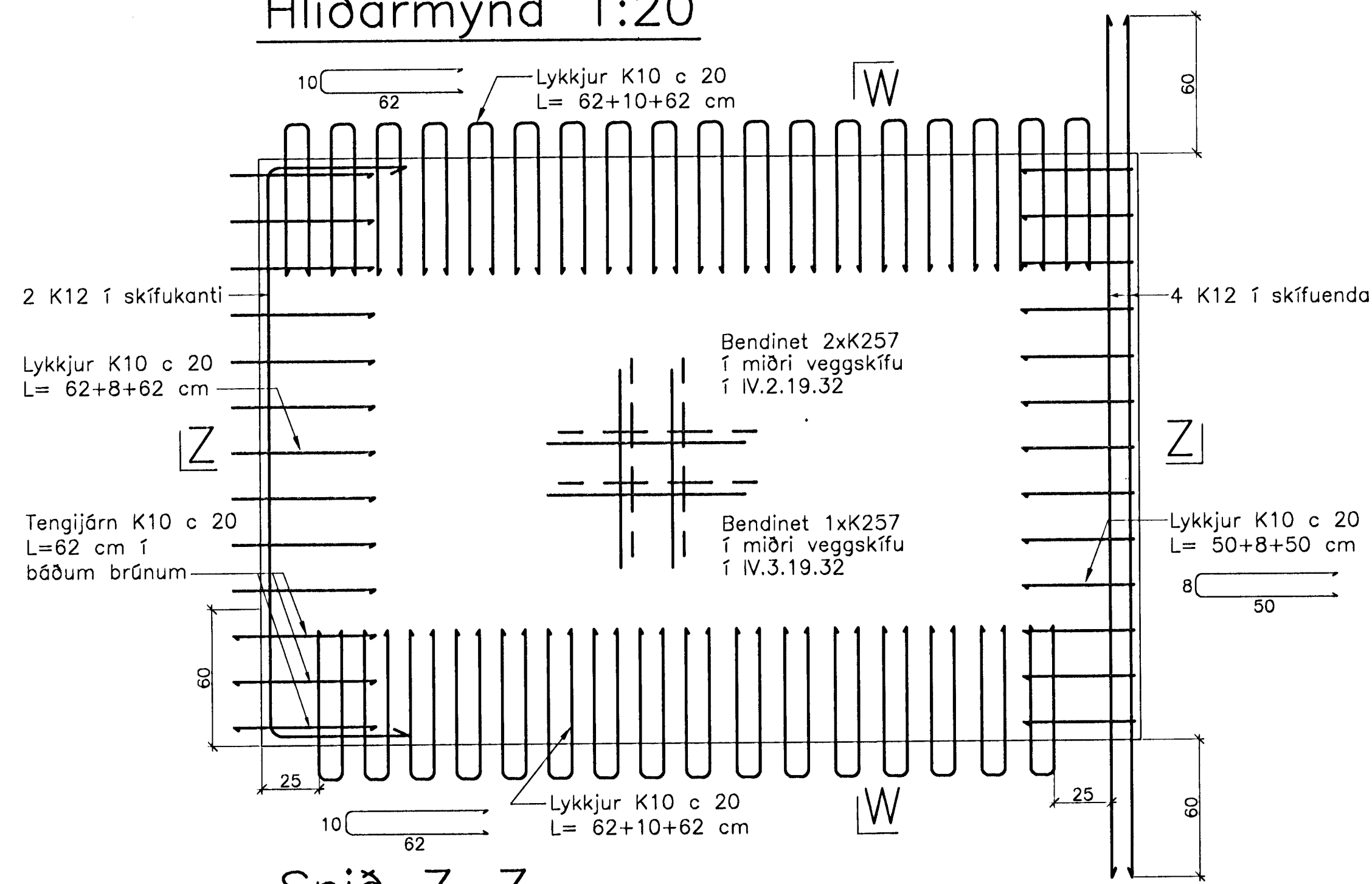
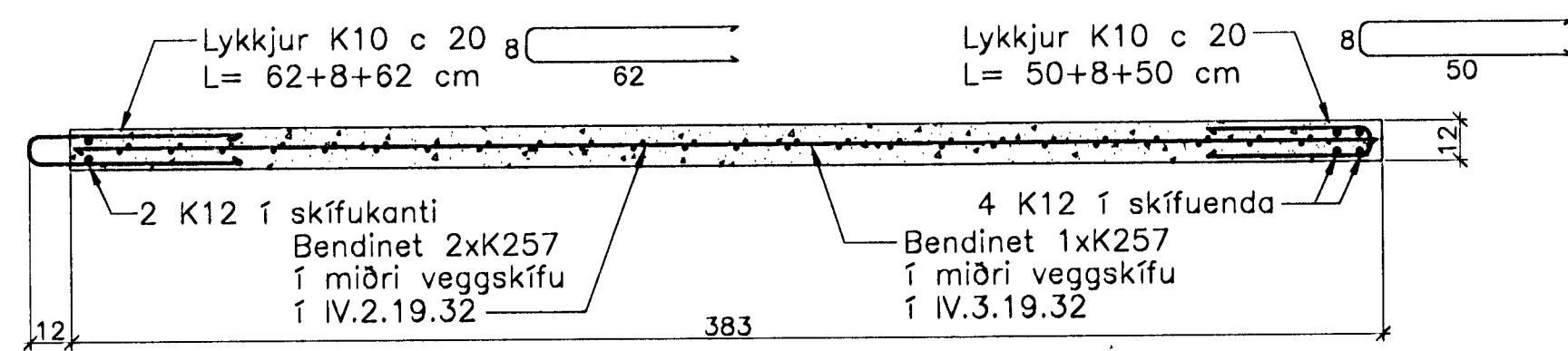


JÄRNBENT STEYPA Innveggjaeiningar 1:20

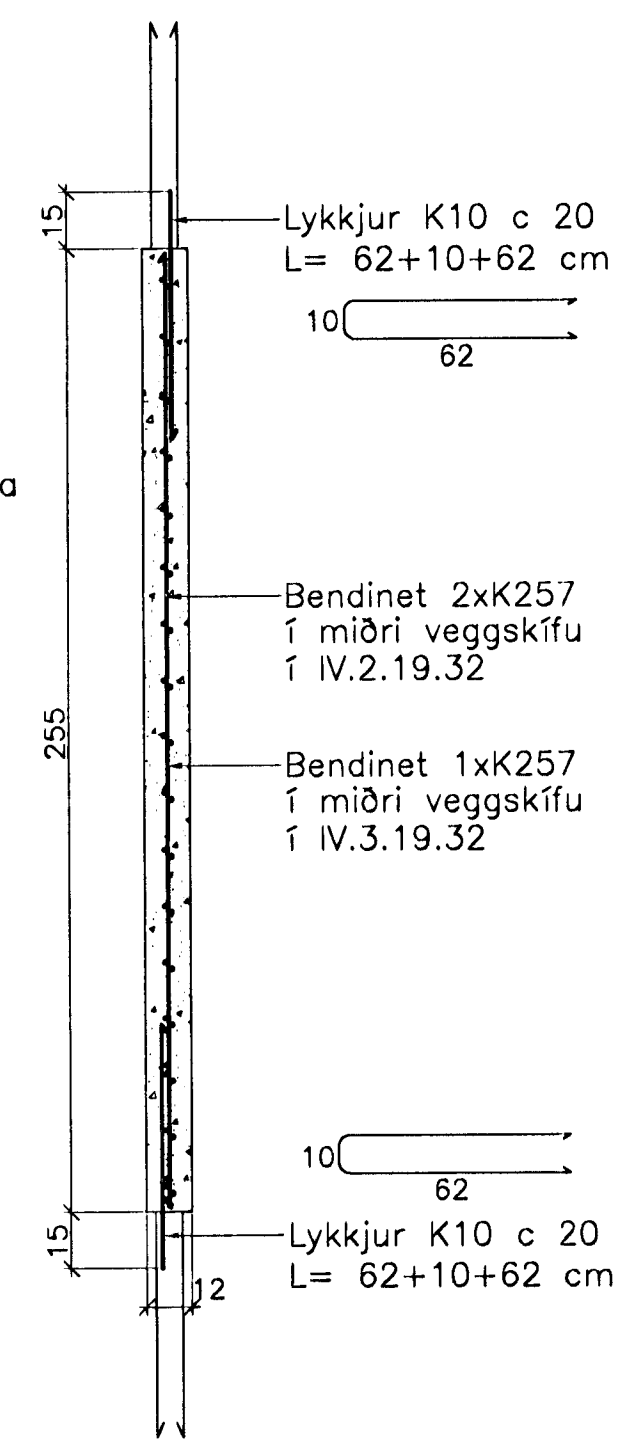
Innveggur IV.3.19.32
Innveggur IV.2.19.32
Hliðarmynd 1:20



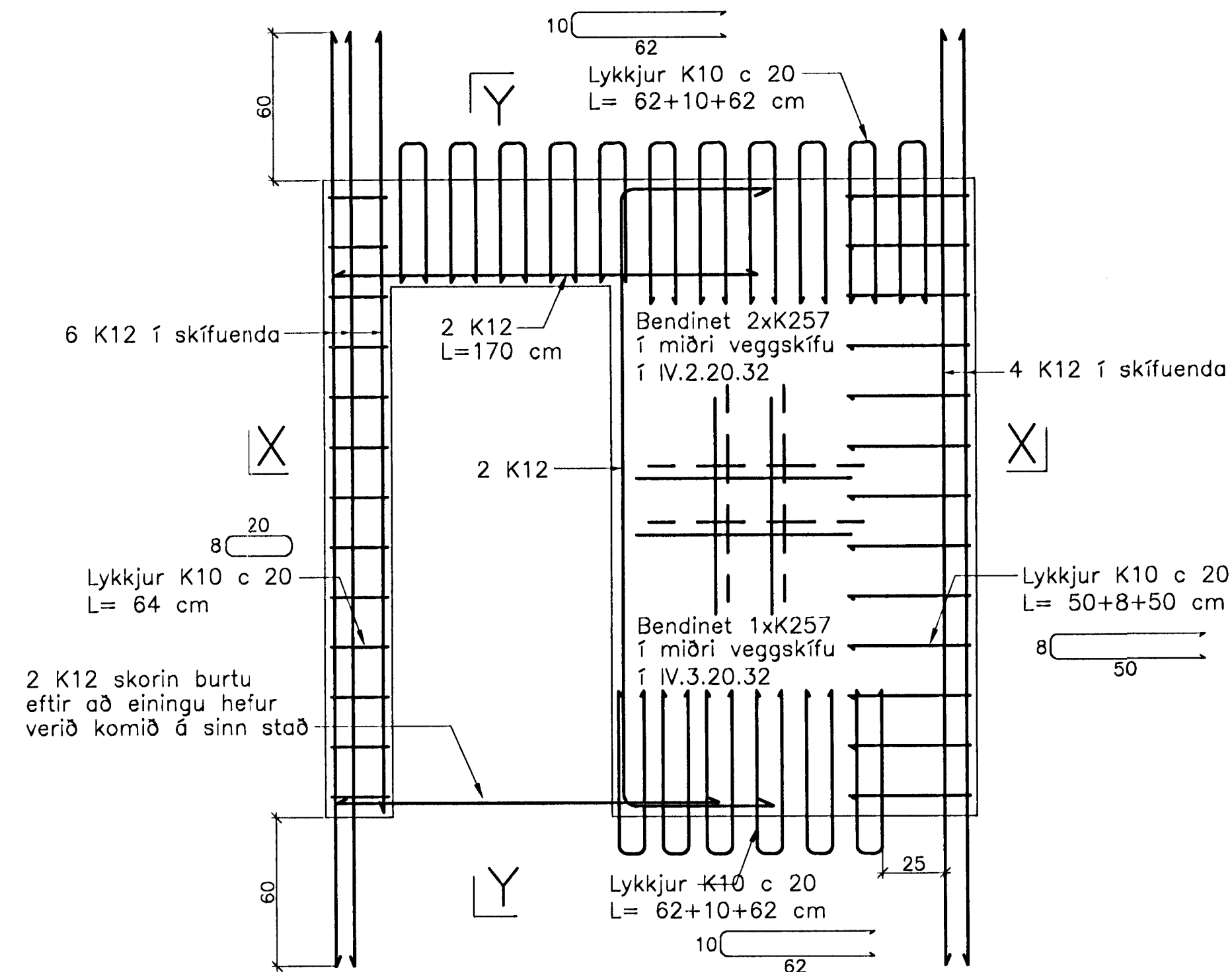
Snið Z-Z



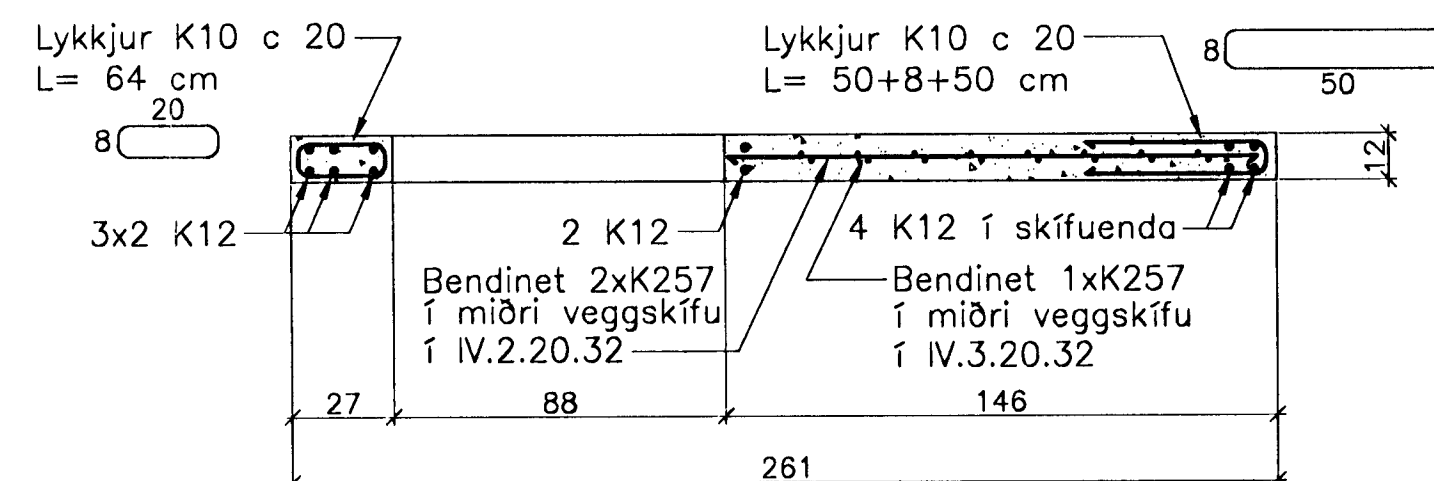
Snið W-W



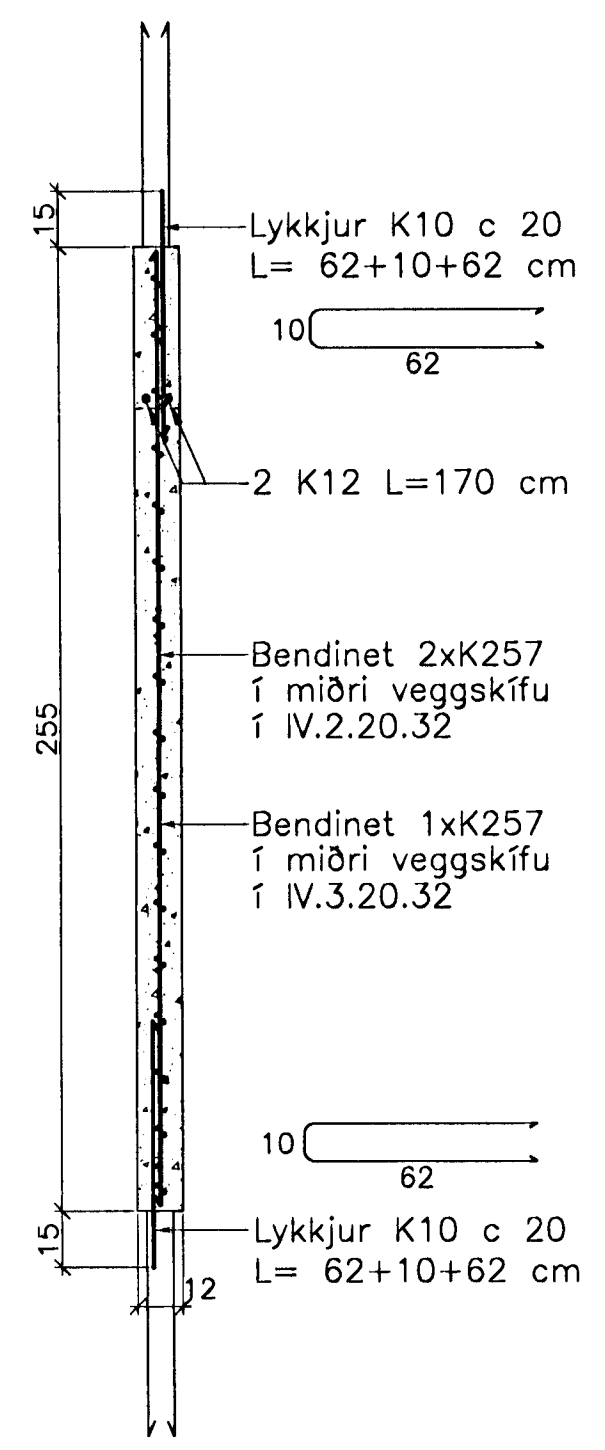
Innveggur IV.3.20.32
Innveggur IV.2.20.32
Hliðarmynd 1:20



Snið X-X

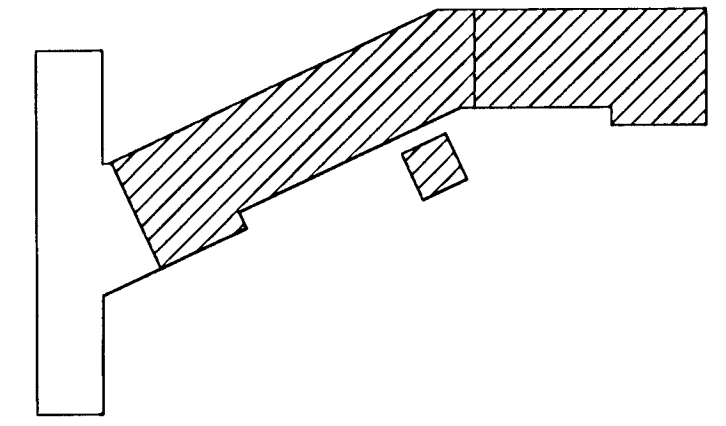


Snið Y-Y



Athuga þarf sérstaklega staðsetningu lóðréttu K12 járnanna upp úr einingum, þar sem loftaplötunar sitja 3 cm inn á veggjum beggja megin frá.

2 K12 skorin burtu eftir að einingu hefur verið komið á sinn stað



Breytingar:

Sigur Oddsson
1012 3629
Sampylkt þann 7 MARS 2005

TEIKNISTOFAN ÖDINSTORGI
Byggingafræðingur í Hafnarfirði
F.h. Sigurbjartur Halldórsson

Verkefni: Lækjargata 32 Hafnarfirði
Heiti: Järnbent steypa: Innveggjaeiningar 2. og 3. hæð
Hönnun: Vífill Oddsson verkfræðingur

VÍFILL ÖDDSSON VERKFRÆÐINGUR
kt. 101237-3629 FVF1 - FRV
ÓDINSGÖTU 7 REYKJAVÍK FAX: 510-2200
SIMI: 510-2200

M. 1:20
R. V.O./K.S.G.
T. K.S.G.
Dags. des. 2004 Nr. 970-1-62