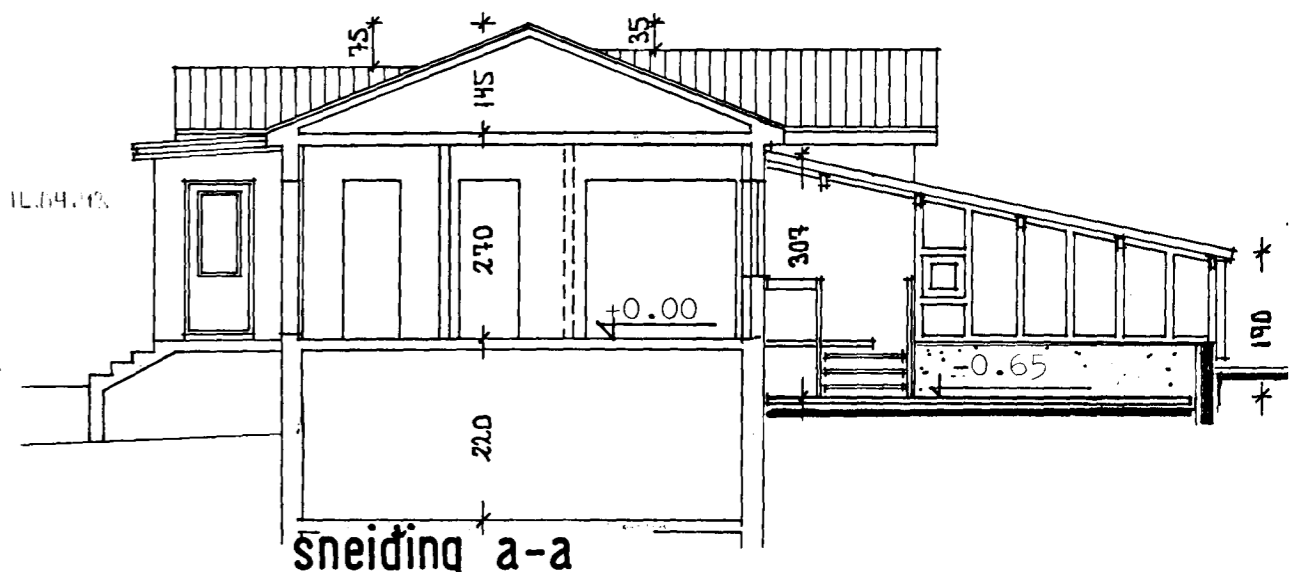
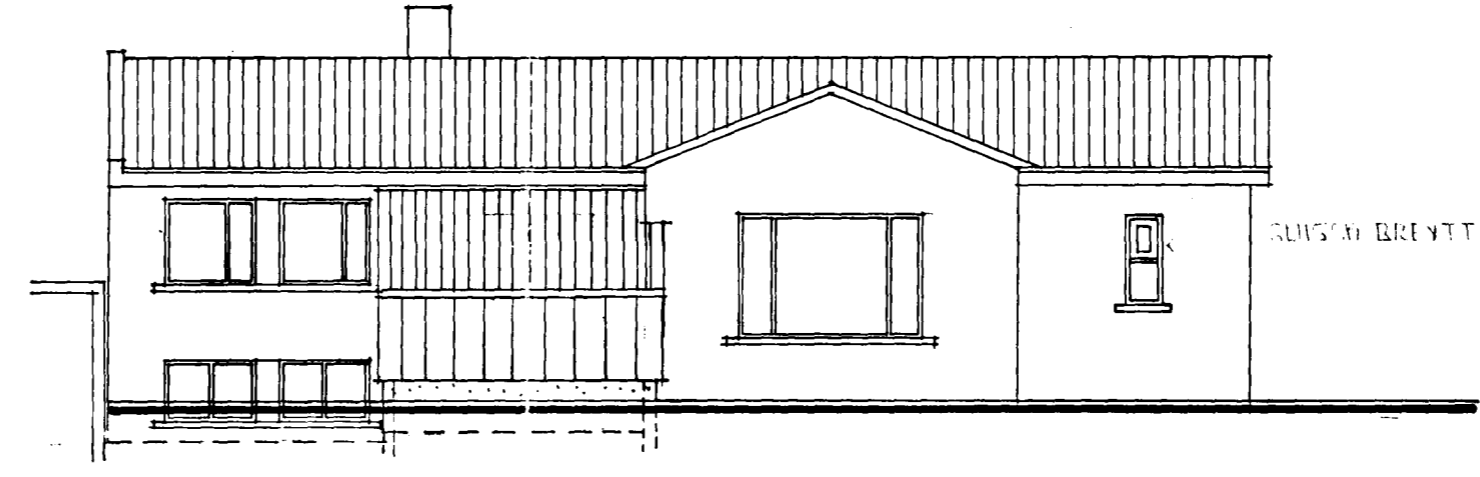
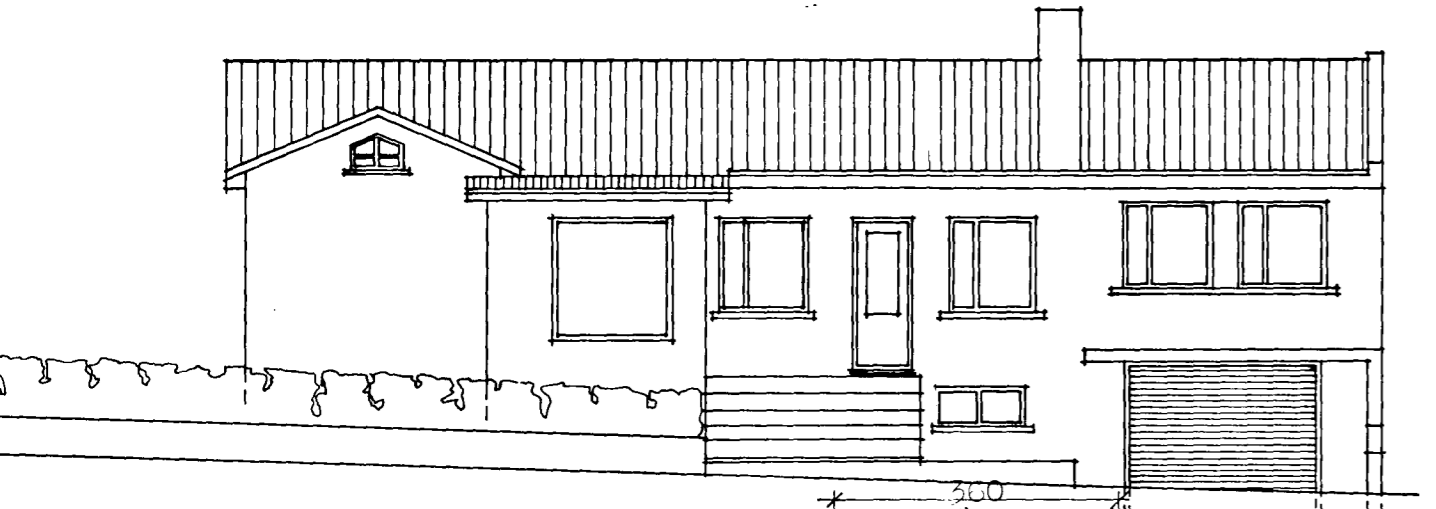


Samþykkt á fundi bygginga-
nefndar þ. 21.4. 1993
BYGGINGAFULLTRÚJINN
Í HAFNARFIRÐI
Sigrún Halldóttir

	m ² nettó	m ² brúttó	m ³ brúttó
EFRI HÆÐ	95.5	118.8	367.6
SÖLSTOFA	19.2	21.8	54.2
KJALLARI	17.5	21.0	45.2
GEYMSLA	9.6	10.9	23.9
BILGEYMSLA	22.4	27.2	60.1
SAMTALS	164.2 m ²	199.7 m ²	551.0 m ³

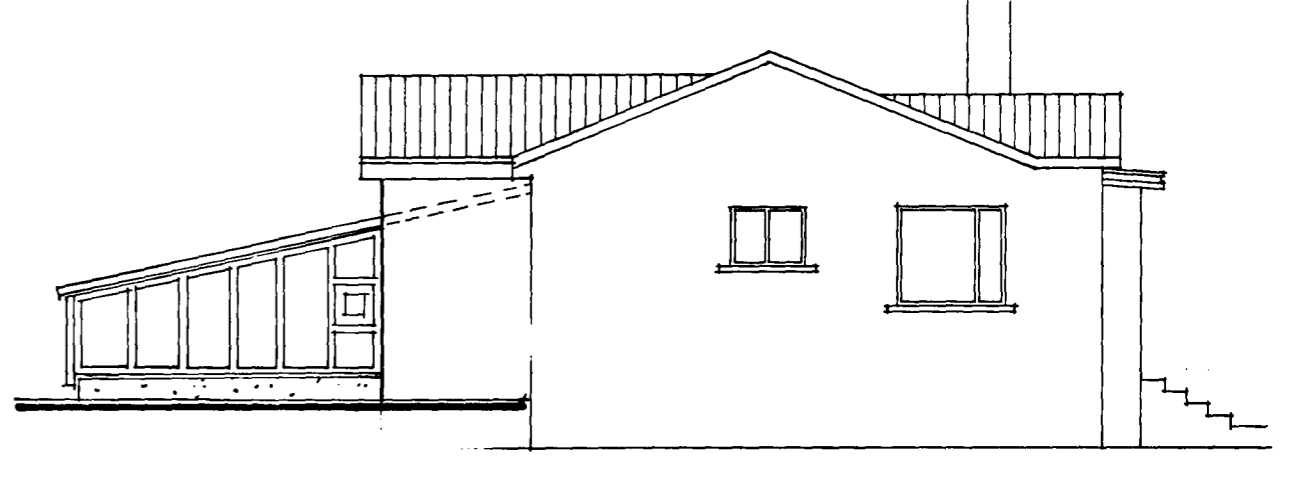
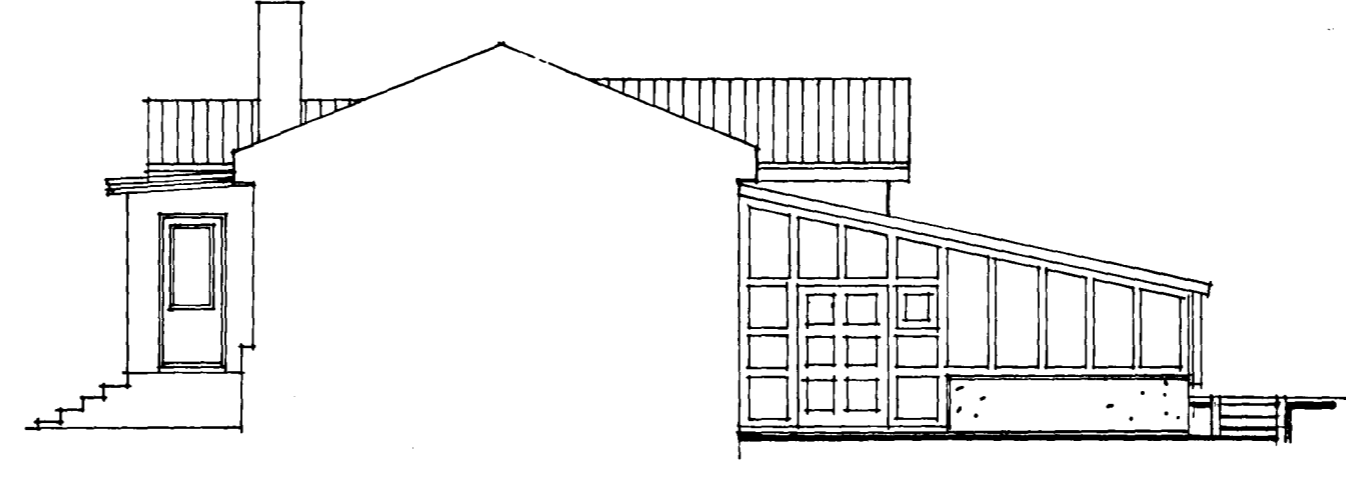
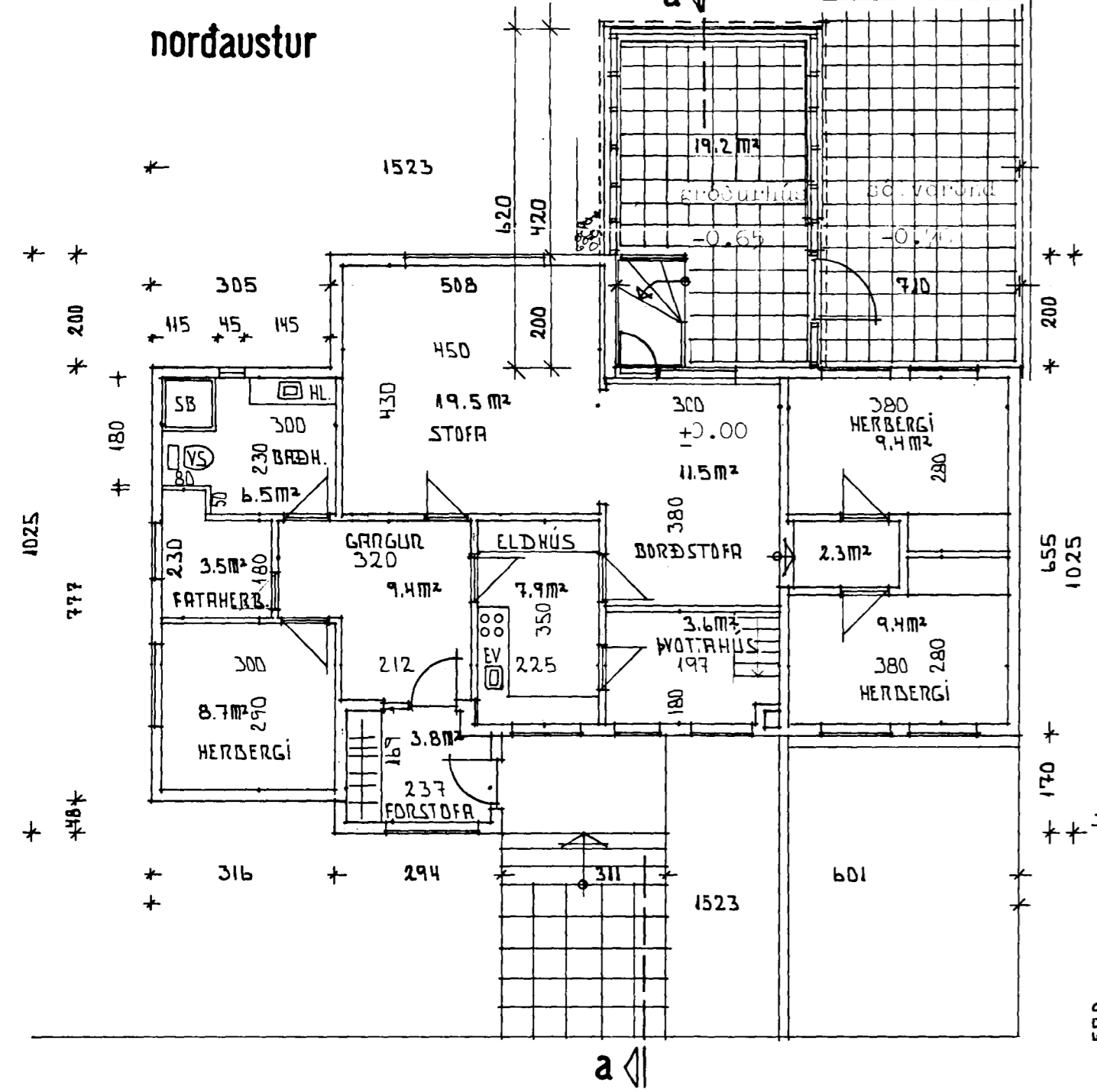
Lækjarkinn 14 er steinsteyppt einbýlishús, byggt 1952.



norðaustur

sudvestur

sneiðing a-a

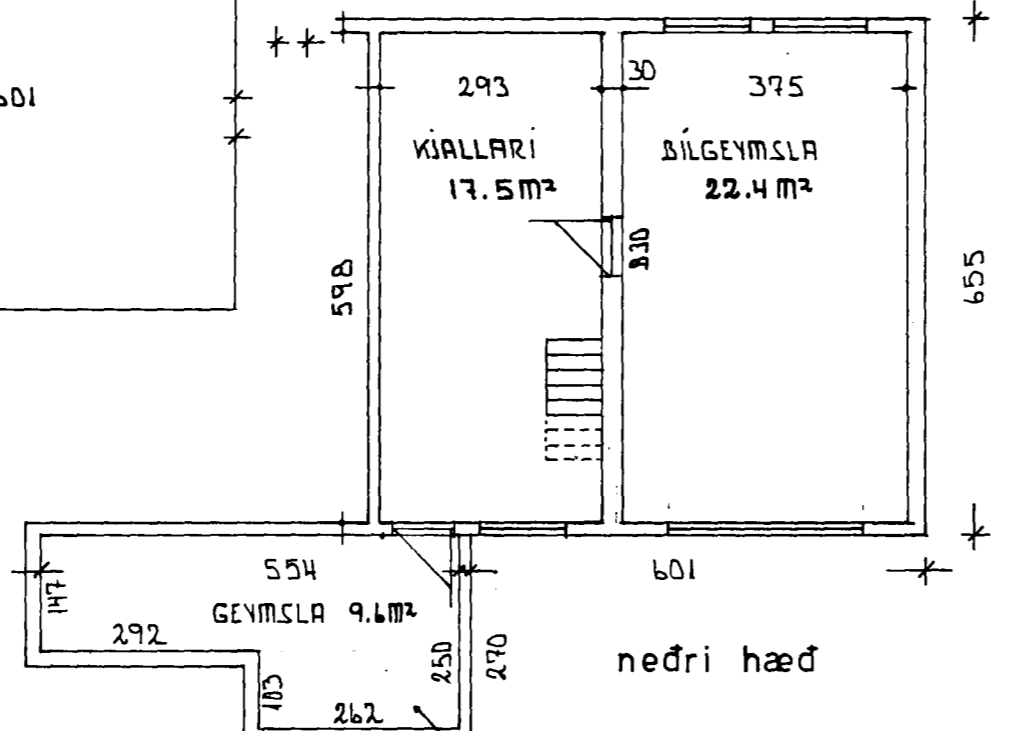


nordvestur

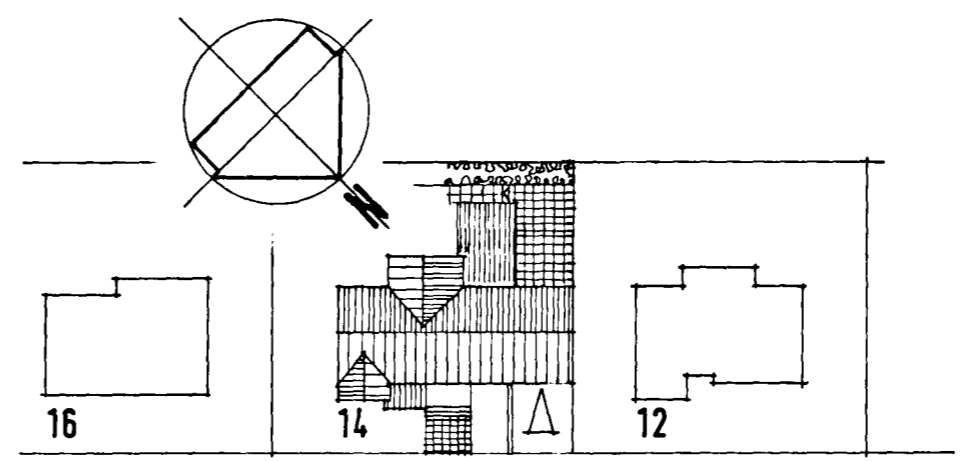
sudaustur

grunnmynd

lækjarkinn



nedri hæð



afstöðumynd 1:500

BREYTT 14 APRÍL 1993 GLUGGI Í BATHERB. Stein

Breytt 12.04.1984

Lækjarkinn 14, hafnarfirði
verkluti aðalt. nív. útl. grunnm. sneiðing
mkv. 1:100 blaðnr. 001
daga 02.05.1993