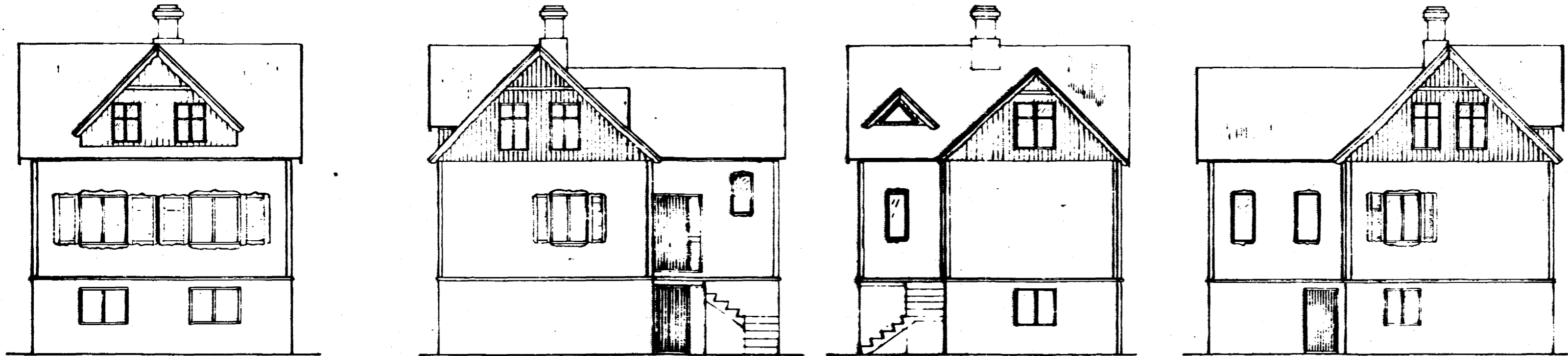


FYRIR BREYTINGU



suðvesturhlíð

suðausturhlíð

norðausturhlíð

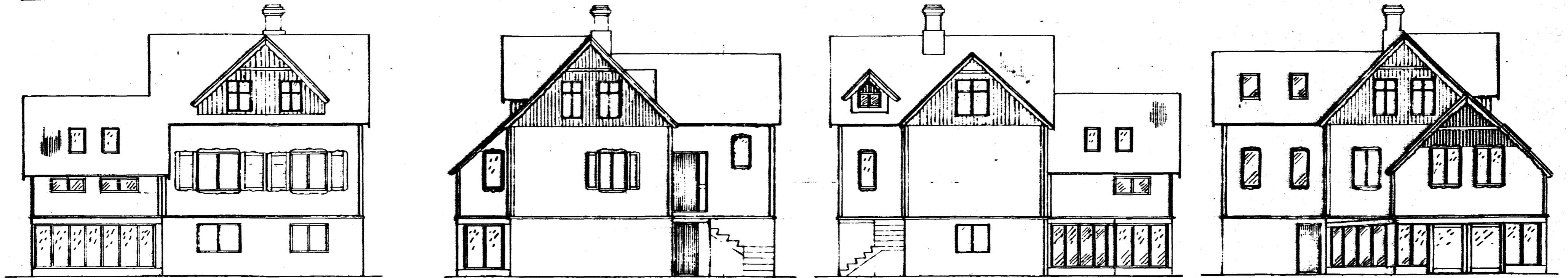
norðvesturhlíð

Samþykkt á fundi bygginga-  
nefndar þ. 5/5 1990

BYGGINGAFULLTRÚINN  
Í HAFNARFIRDI

KJALLARI : 29.75 m<sup>2</sup>  
1 HÆÐ : 23.40 m<sup>2</sup>  
ALLS : 53.15 m<sup>2</sup> = 138 m<sup>3</sup>

EFTIR BREYTINGU

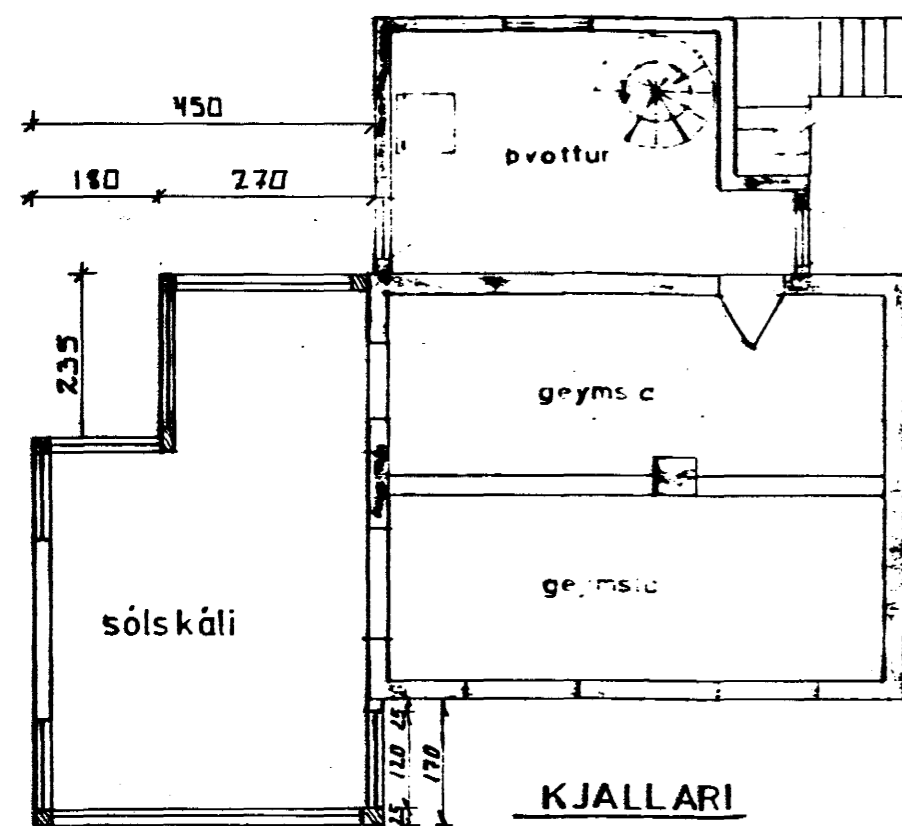


suðvesturhlíð

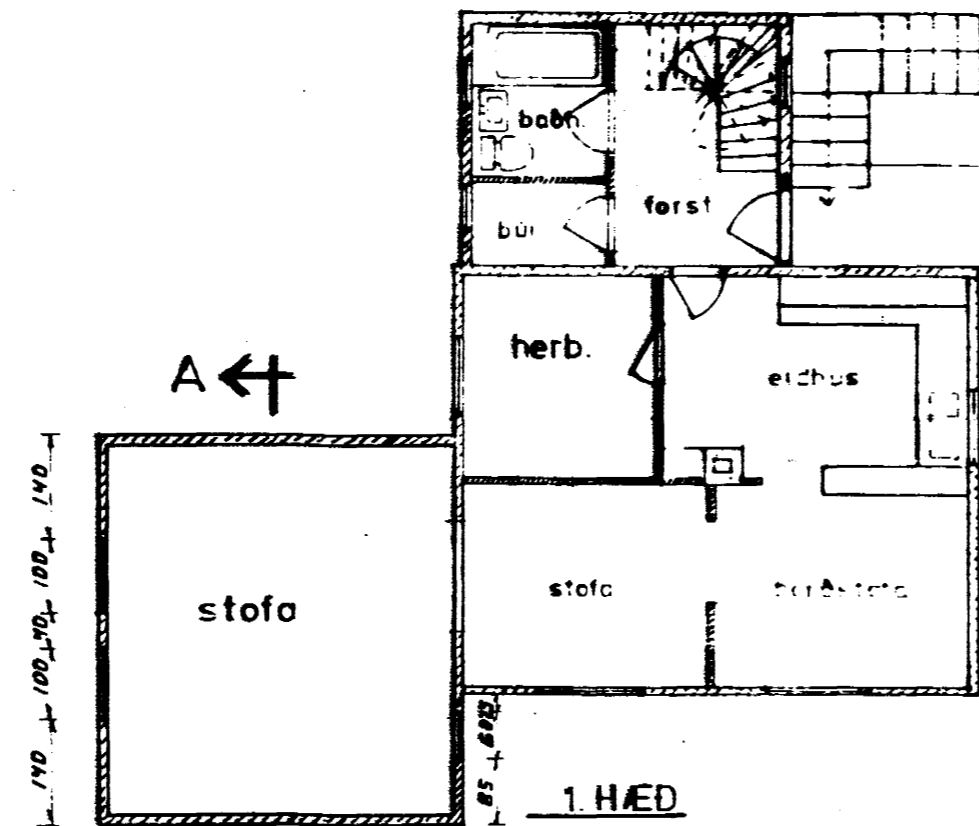
suðausturhlíð

norðausturhlíð

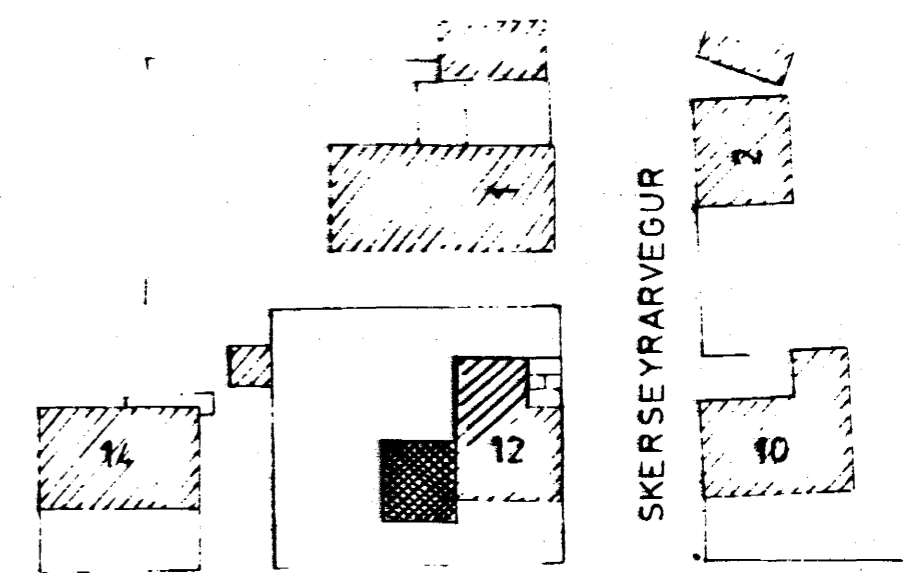
norðvesturhlíð



KJALLARI

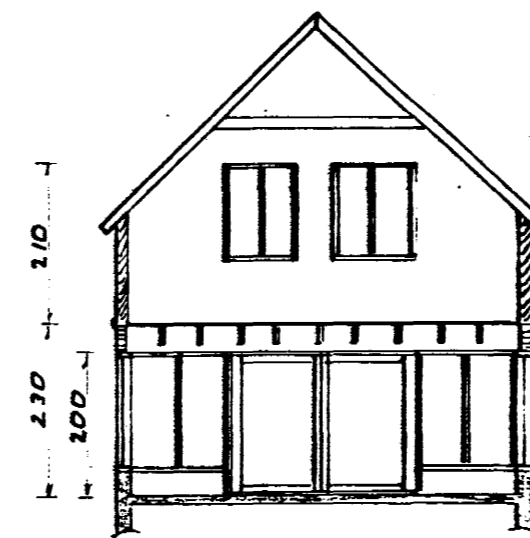


1. HÆÐ



LANGEYRARVEGUR

afstaða 1:500



SNID A

LANGEYRARVEGUR 12 HAFNARFIRDI		Hannað	OKT '85	A.S.
BREYTT Í AGÚST 1990		Teknað		A.K.
 AGÚST KNÚTSSON FTFI		Vérifað		
AGÚST KNÚTSSON M.T.	s.54209	Mkv 1990 199		