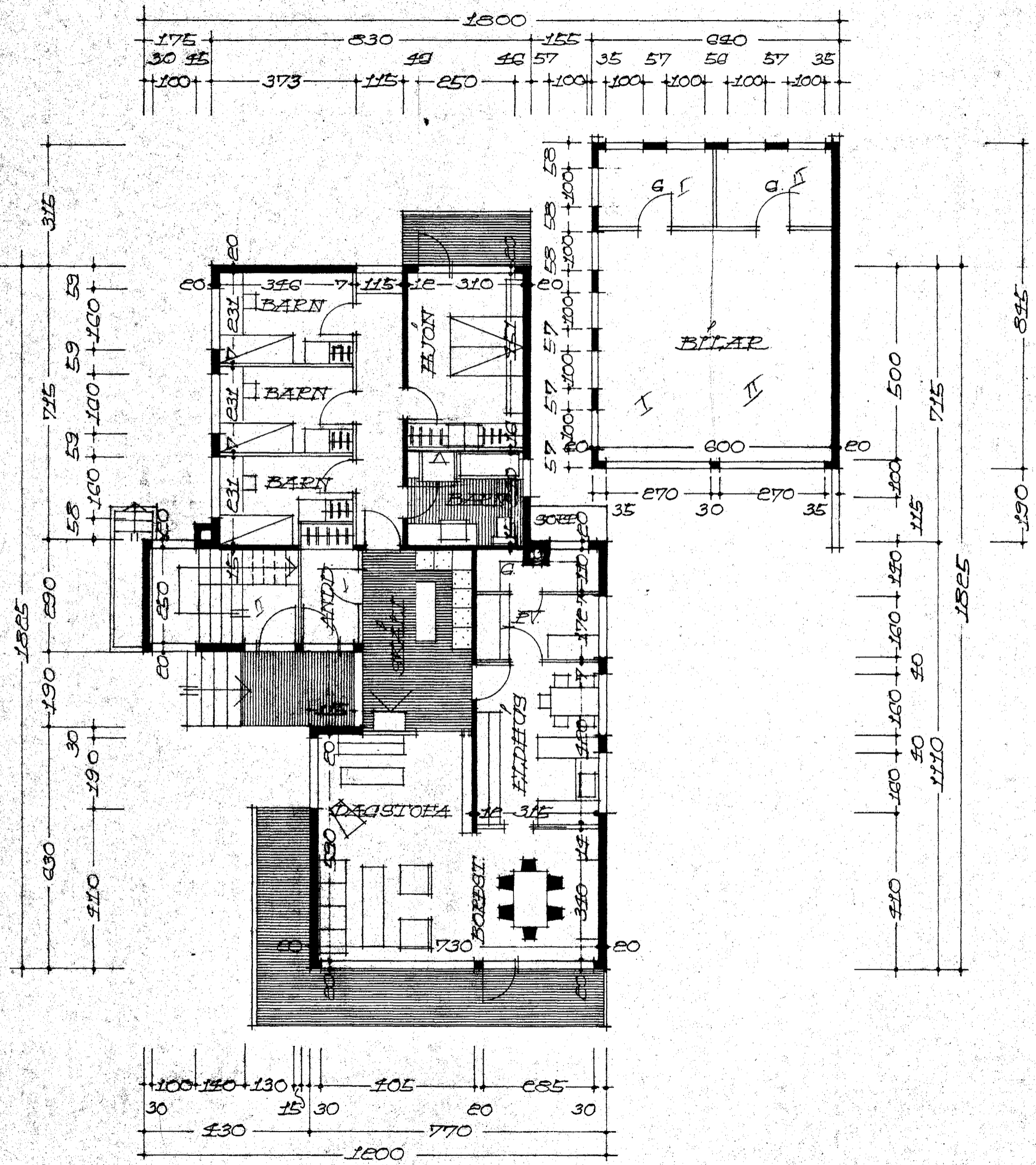
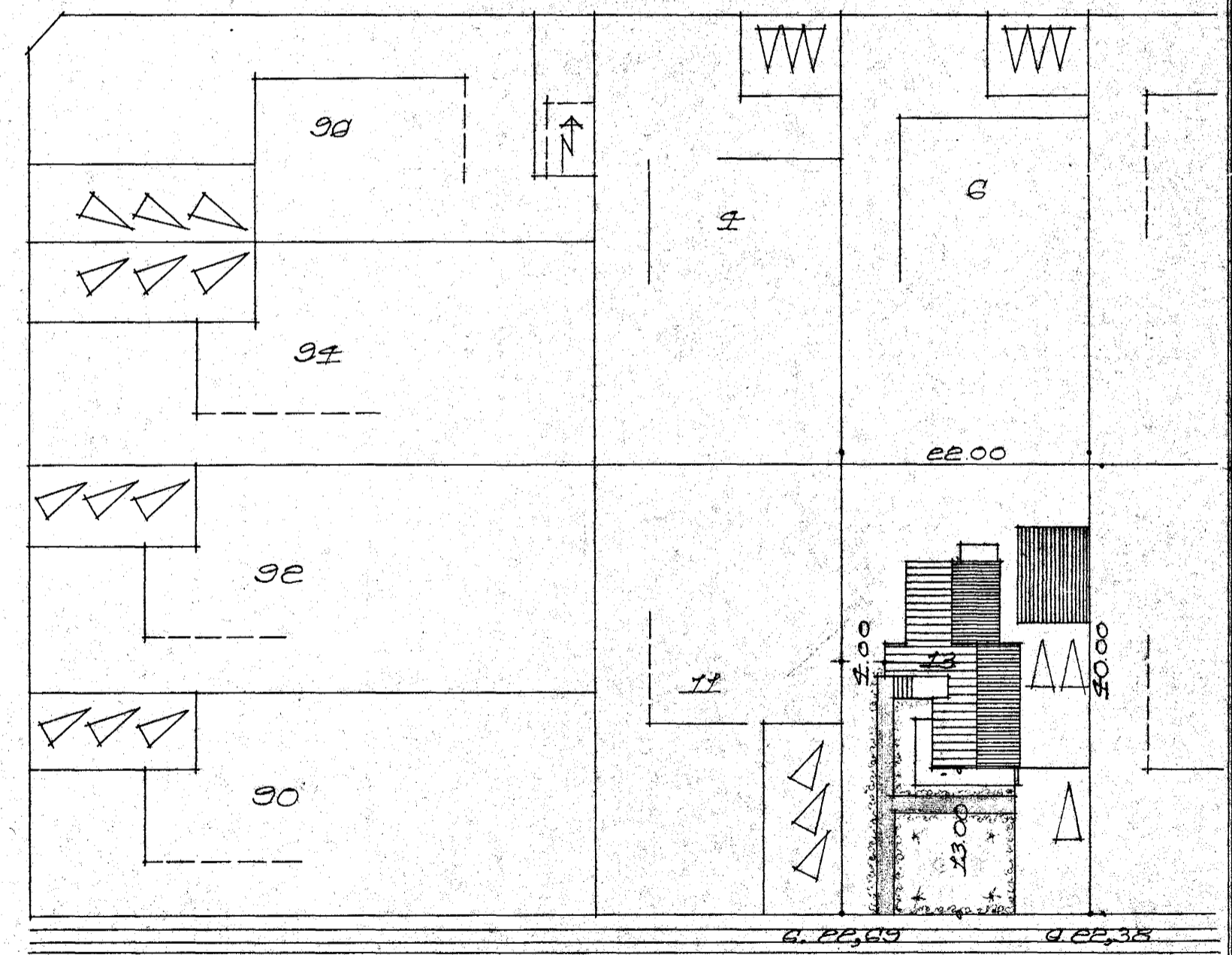


Samþykkt á fundi bygginga-  
nefndar þ. 26. 1. 1972  
BYGGINGAFULLTRÚINN  
Í HAFNARFIRÐI  
*S. J. Jónsson*



FLATARMÁL HÚSS 155,11 M<sup>2</sup>  
FLATARM. BITARÚRS 54,08 M<sup>2</sup>  
AFTIÐDUMEND M. 1:500



LAUFVANGUR

REPKJAVÍK Í JAN. 1971  
*Sjartan Sveinsson*

GRUNNMYND 1. HÆÐ