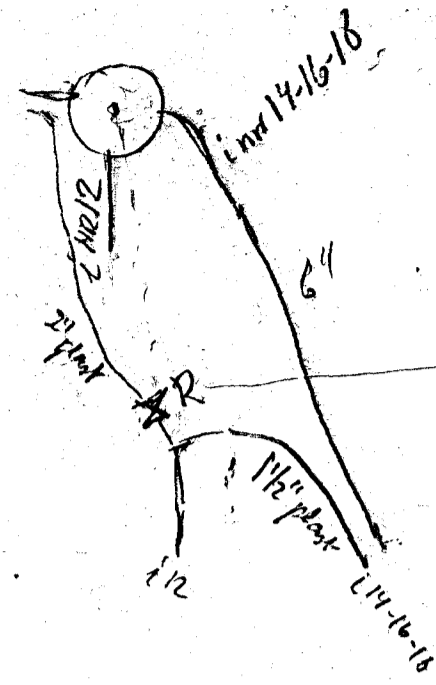
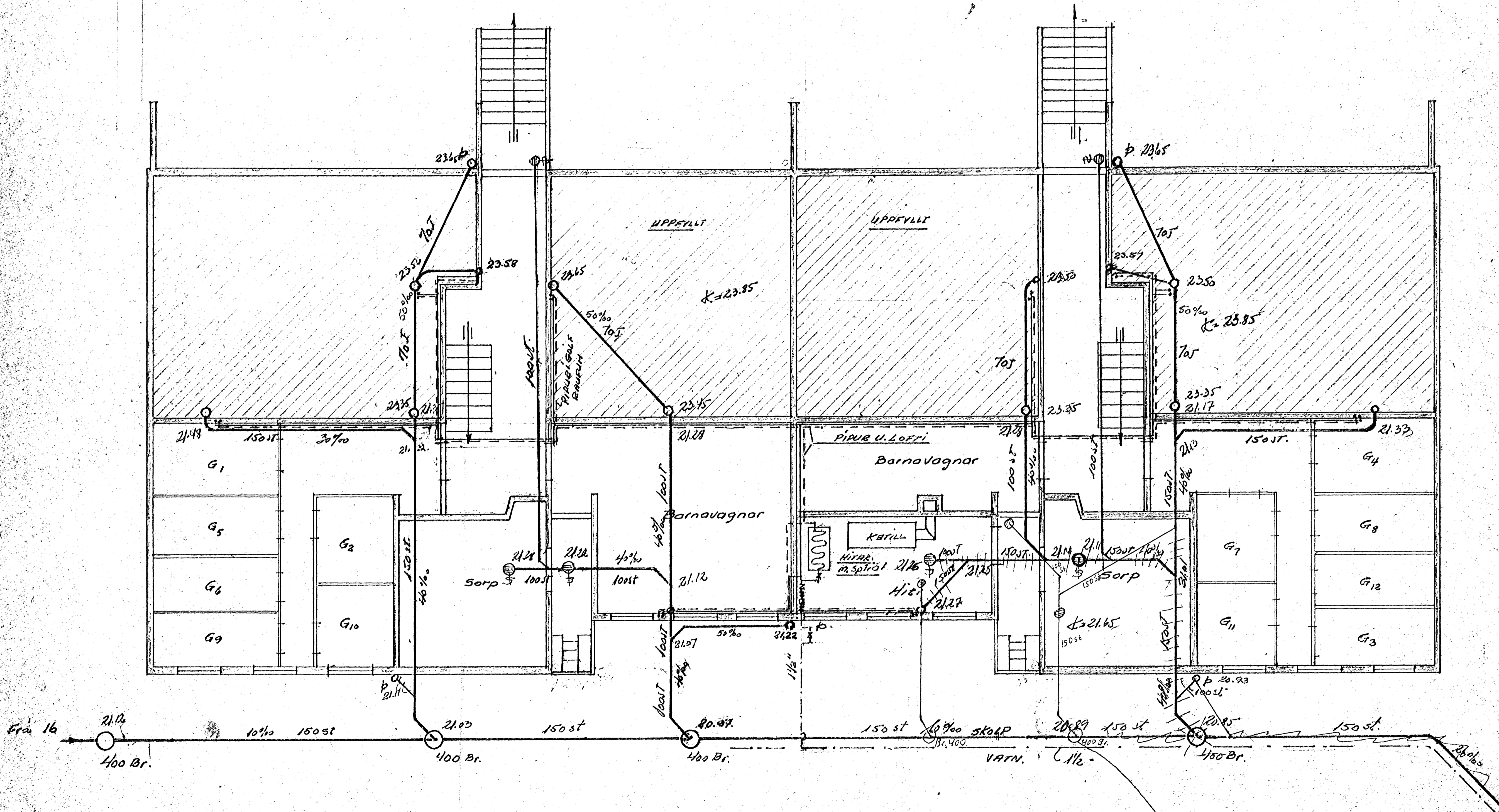


AFSTÖÐUHYND 1:500



Staðsetning fannilokans R er 4.0m frá miðjum brunn (kannski stefna á gættu A í nr. 12 þ.e. þáttur nr. 14)

|                    |            |         |
|--------------------|------------|---------|
| LAUFANGUR 14       | Skala 1:50 | Bl. 14  |
| VAÐN & SKOLP       | Skala 1:50 | Bl. 14  |
| Tilgangur: Teygi R |            | 7001 R1 |
| Tilgangur: Teygi R |            | 7001 R1 |



TALQ132.1-8  
7001-R1