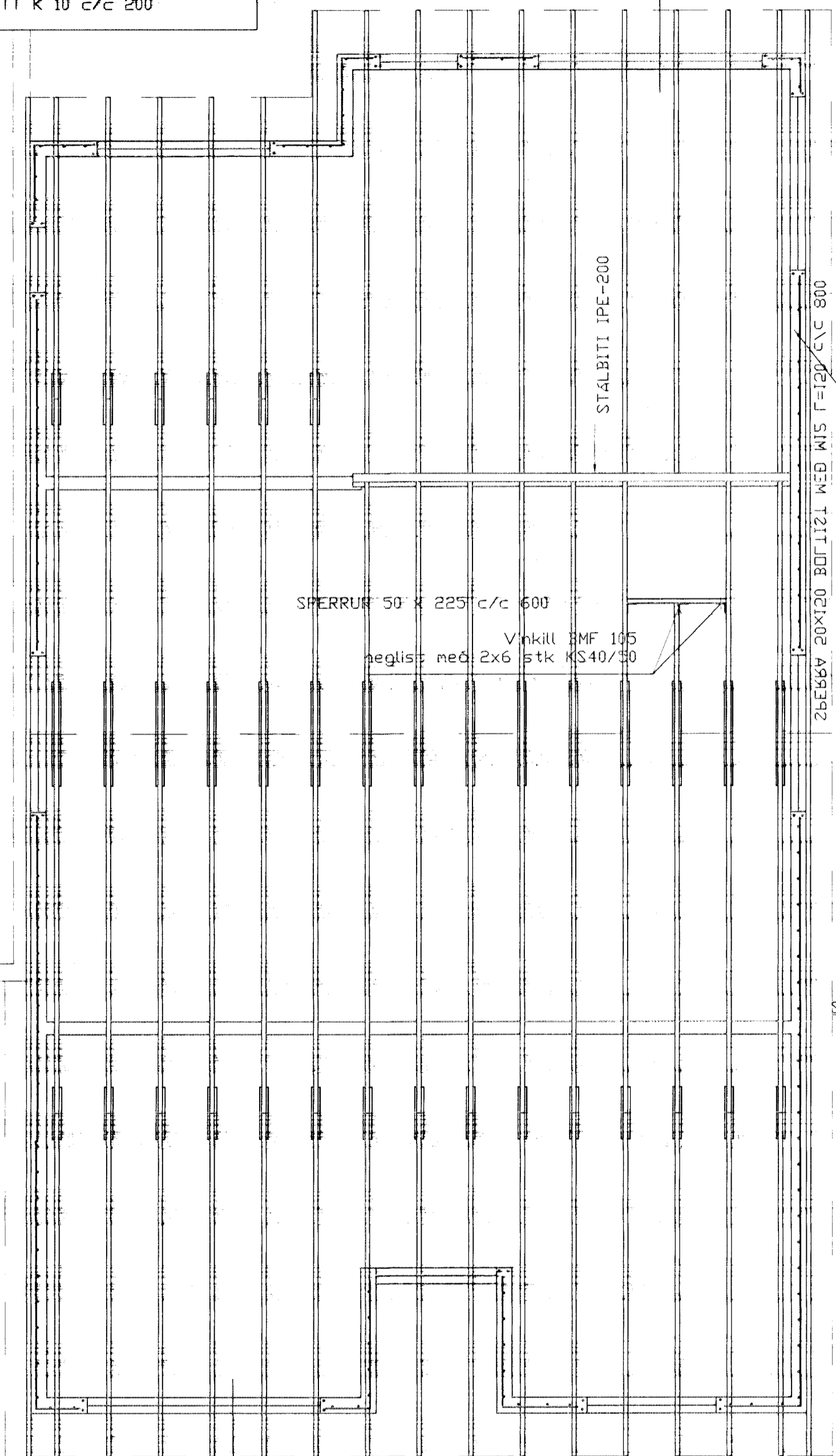
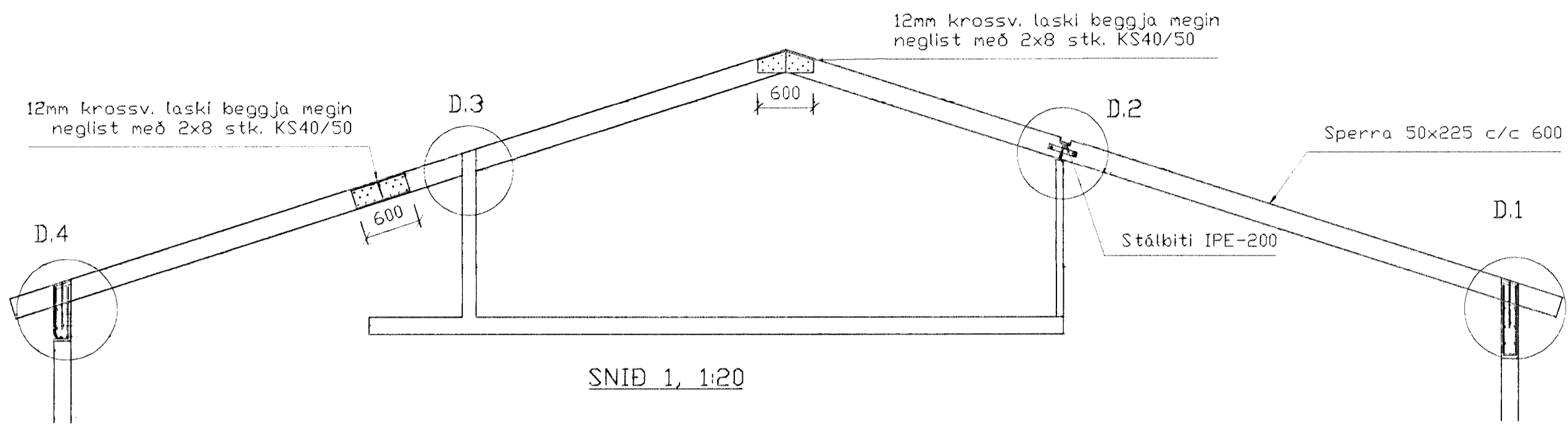


Í ÖTVEGGI KOMI EINFÖLD GRIND
 Í YTRI BRUN VEGGJA
 LÖÐRÉTT K10 c/c 300
 LÁRÉTT K 10 c/c 200

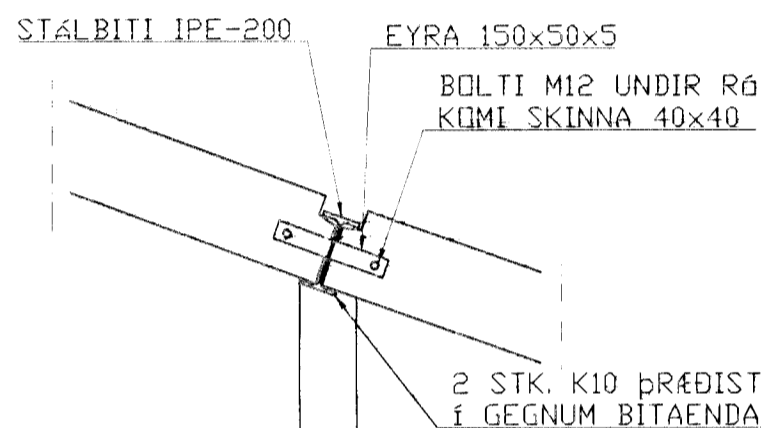


Grunnmynd 1/50

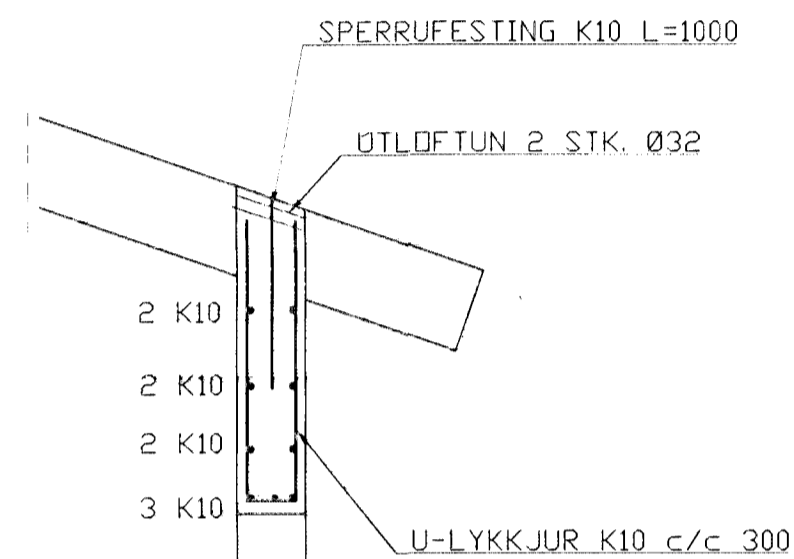


SNID 1, 1:20

Einföld grind í útbrún
 lárétt K10 c/c 200
 löðrétt K10 c/c 300



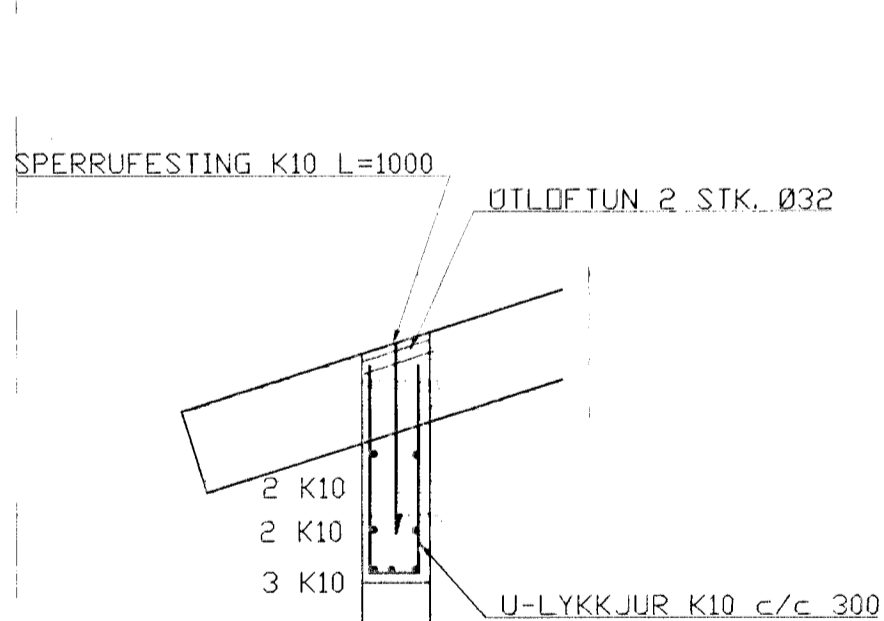
DEILI 2, 1:20



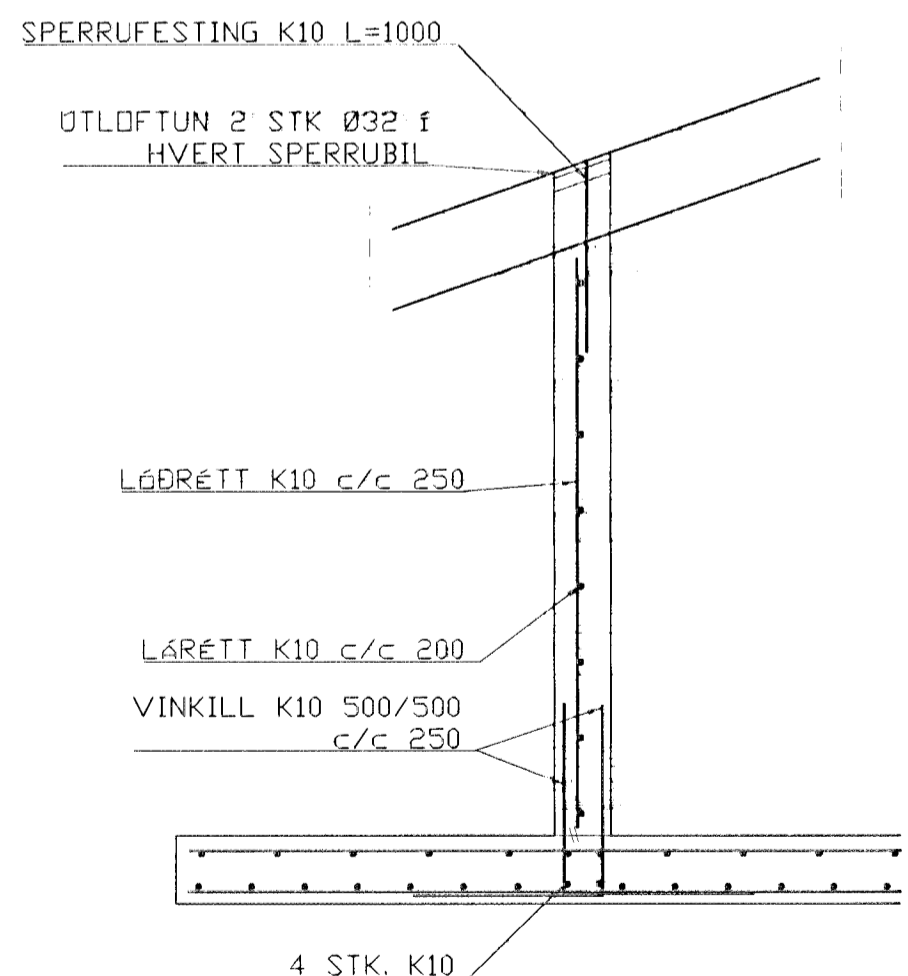
DEILI 1, 1:20

SKÝRINGAR

ALMENNAR SKÝRINGAR SJÁ BL. 1-01
 STEYPA S-250, SEMENTINNIHALD = 300kg/M
 STEYPUHULA Í ÖTVEGGJUM = 30mm
 STEYPUHULA Í PLÁTU = 20mm
 BENDISTÁL Ks410



DEILI 4, 1:20

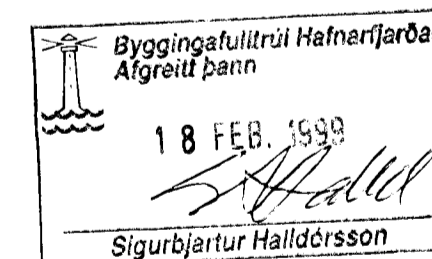


DEILI 3, 1:20

01	17.02.99	Þakpluggi	SH
BR.	DAGS.	EÐLI BREITINGA	SIGN.

LINDARBERG 54
 HAFNARFIRÐI

Þakvirki



DAGS. Janúar 99
 VERK NR. 9841
 TEIKN. NR. 1-05
 HANNAÐ Sveinbjörn Hinriksson 160851-2529
 TEIKNAD Sveinbjörn Hinriksson
 YFIRFARIÐ *Andri M. J.*

TÆKNIÞJÓNUSTA SIGURDAR ÞORLEIFSSONAR ehf
 STRANGÖTU 11 220 HAFNARFIRÐI
 Sími 555-4255 FAX 565-2875
 E-mail taeknihjonusta@islandia.is

