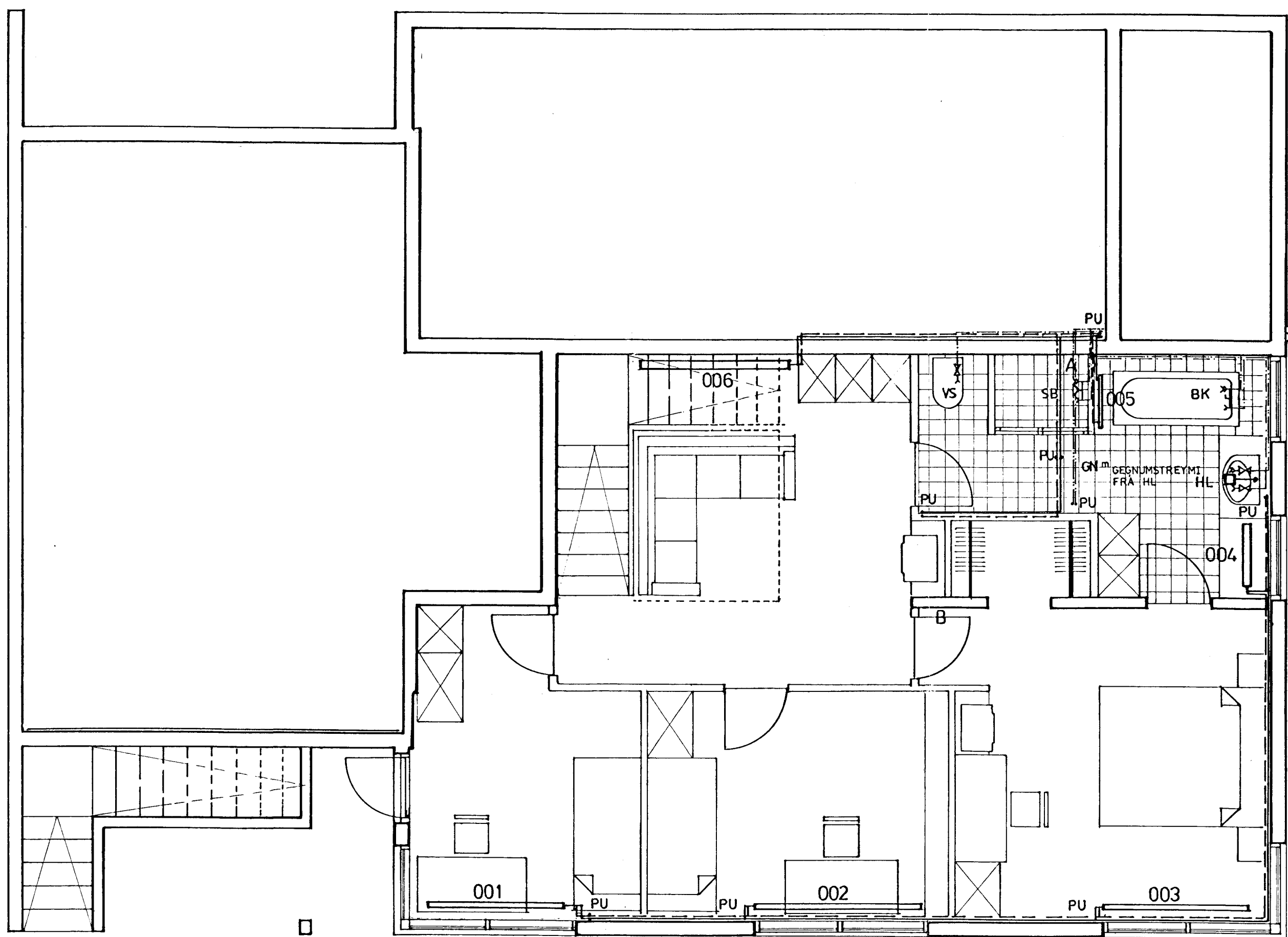


F
E
D
C
B
A

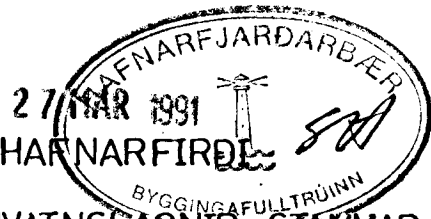
8 7 6 5 4 3 2 1



GRUNNMYND NEDRI HÆÐAR M 1:50

OFNASKRÁ:

NR.	STADUR	TENGING	OFN	LENGD	AFRÖST WÖTT/KLST	ÞÖRF WÖTT/KLST
101	BÍLSKÚR	C/D	V91/2	L=2600	2730	2800
102	STOFA	A/B	VKM63/2	L=1800	2466	2000
103	STOFA	C/D	SWISSYL 323	L=1800	1456	2000
104	HORNHERBERGI	C/D	V63/2	L=1800	1318	1260
105	FORSTOFA	A/B	SWISSYL 323	L= 900	728	790
106	FORSTOFA	C/D	SWISSYL 323	L= 900	728	790
108	ÞVOITUR	A/B	VKM63/2	L= 900	1233	960
109	ELDHÚS	A/B	VKM63/2	L=1200	1844	1630
110	HORNHERBERGI	A/B	VKM63/2	L= 800	1096	1140
112	GESTASNYRTING	HANDKLEDAOFN	1050-21H		310	280
001	HORNHERBERGI	A/B	V63/2	L=1800	1318	1170
002	MIDHERBERGI	C/D	V63/2	L=1800	1318	1020
003	HJÓN	C/D	V63/2	L=1800	1318	1770
004	BAD	A/B	SWISSYL 433	L= 700	801)	
005	BAD	HANDKLEDAOFN	1075-50H		1021)	1620
006	SJÓNVARP	C/D	V91/2	L=1700	1785	1450
201	RISHERBERGI	C/D	V63/2	L=1800	1318	1220
202	GEYMSLA	C/D	V91/2	L=1200	1260	1200
					23848	23100



LINDARBERG & HARNARFIRÐIR
HITA OG NEYSLUVATNSLAGNIR - STAMMAR
GRUNNMYND NEDRI HÆÐAR OFNASKRÁ.

DAGS. NOV 1990 MK 1:50 BLAD 1 AF 4
Kristinn Baldursson Ástúni 12 Kóp. FT.F.I. KNT. 10045-5499

8 7 6 5 4 3 2 1