

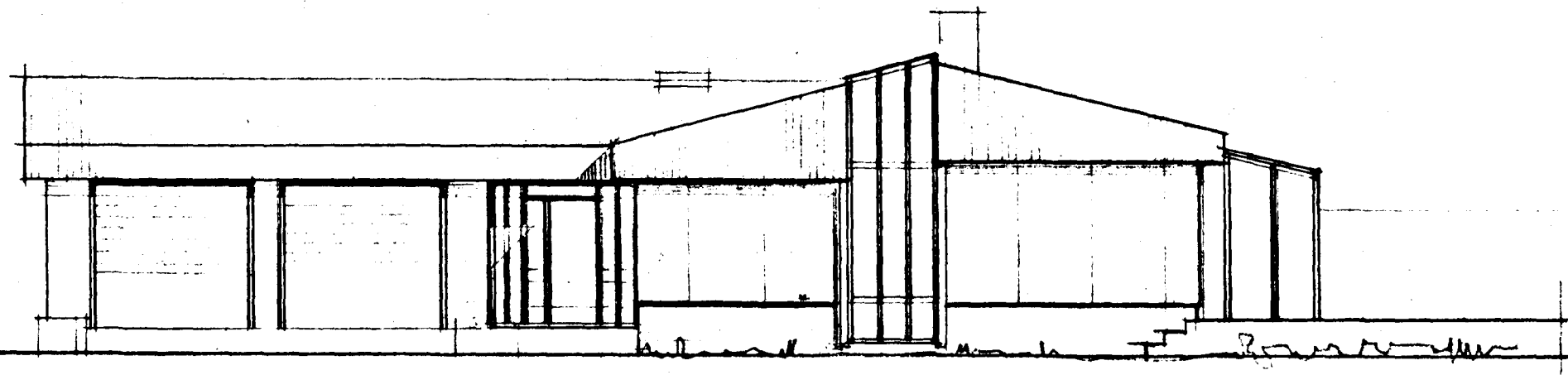
Samþykkt á fundi bygginga-  
nefndar p. 6.18. 1986.

BYGGINGAÞULLTRÚN  
Í HAFNARFIRÐI

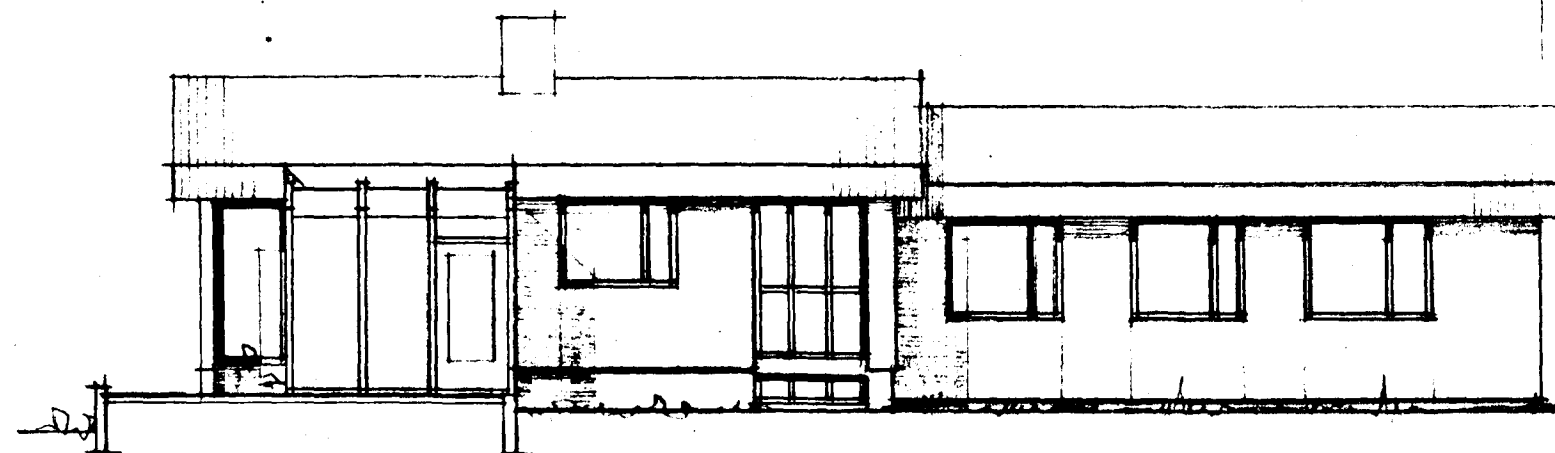
*E. Steindur Þórunn*

Gagn skal frá önnur  
eldstíðri í samráði við  
stjórnvaldið.

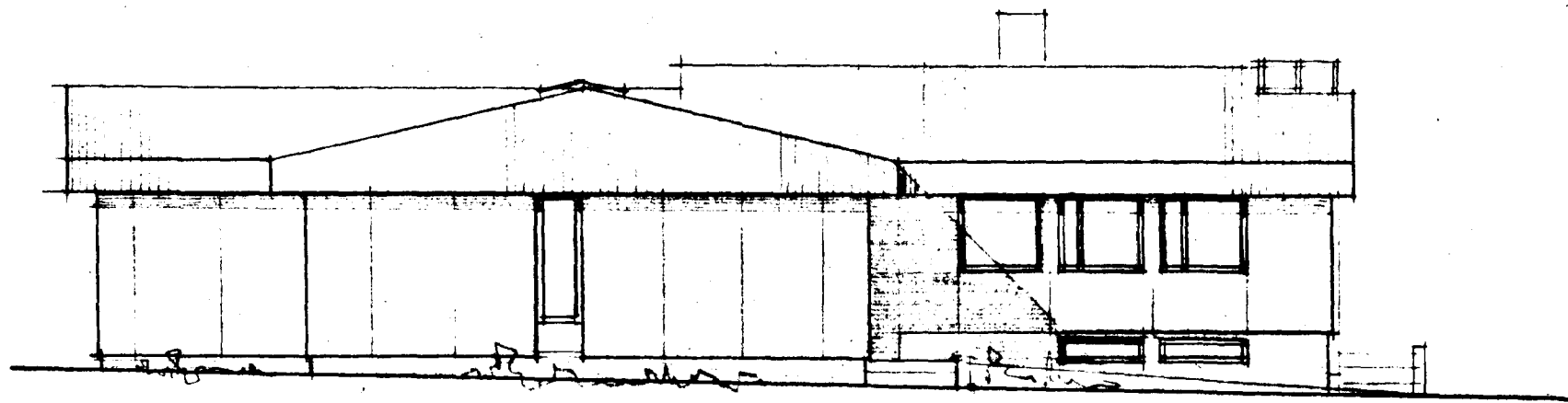
*Þekkið björgunarp í kjallara*



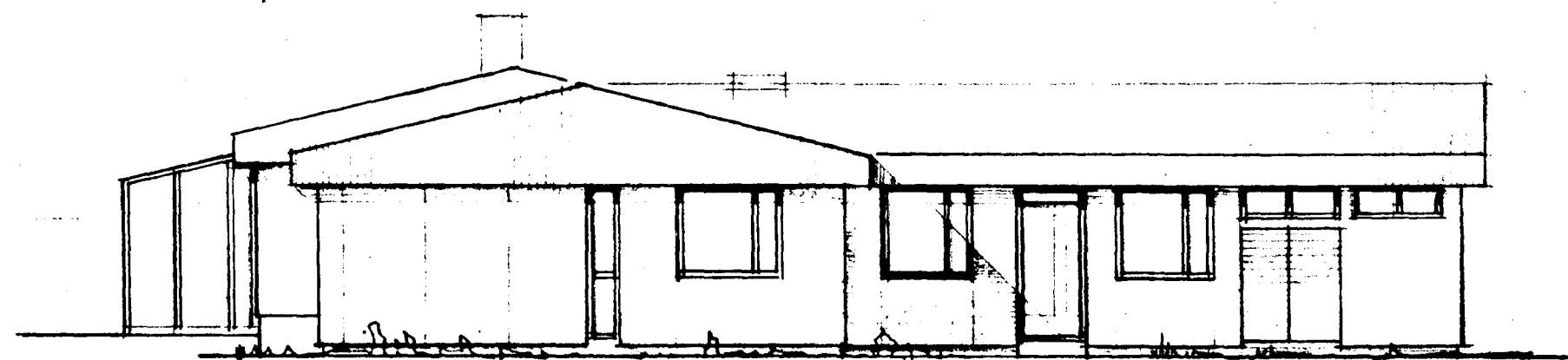
VESTURHLIÐ (AÐ GÖTU)



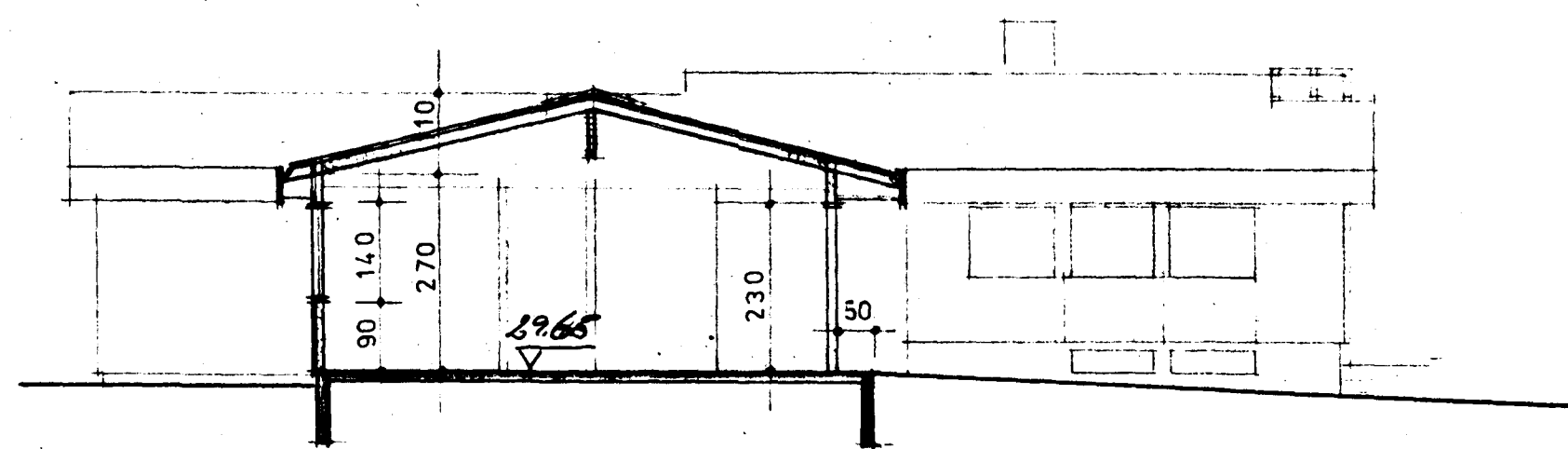
SUÐURHLIÐ



NORÐURHLIÐ

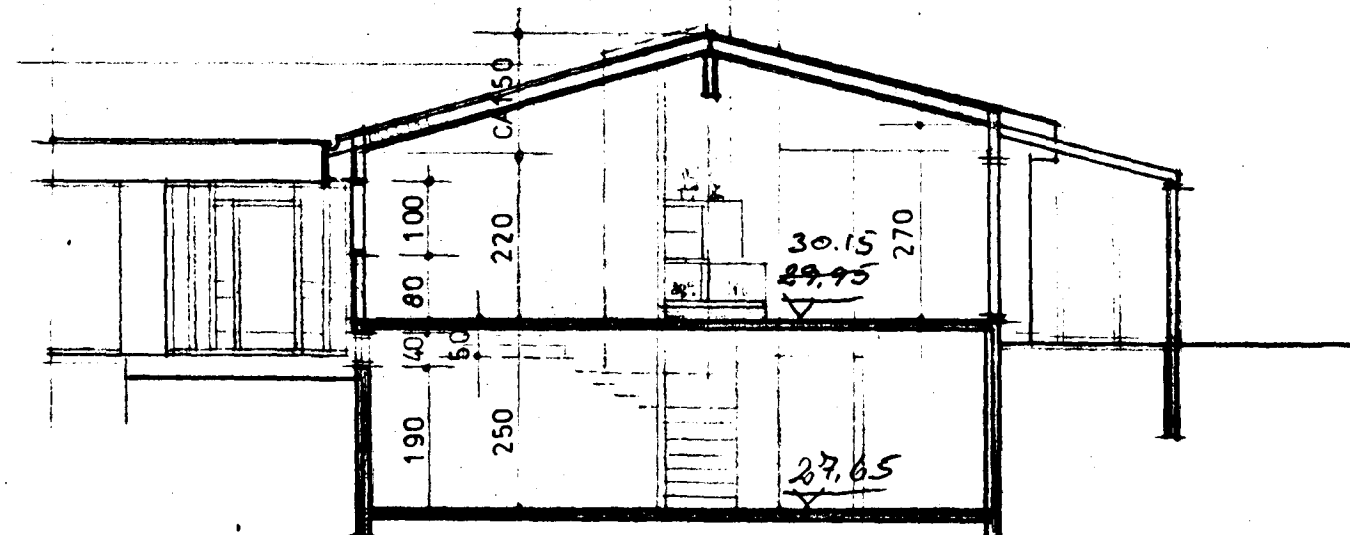


AUSTURHLIÐ

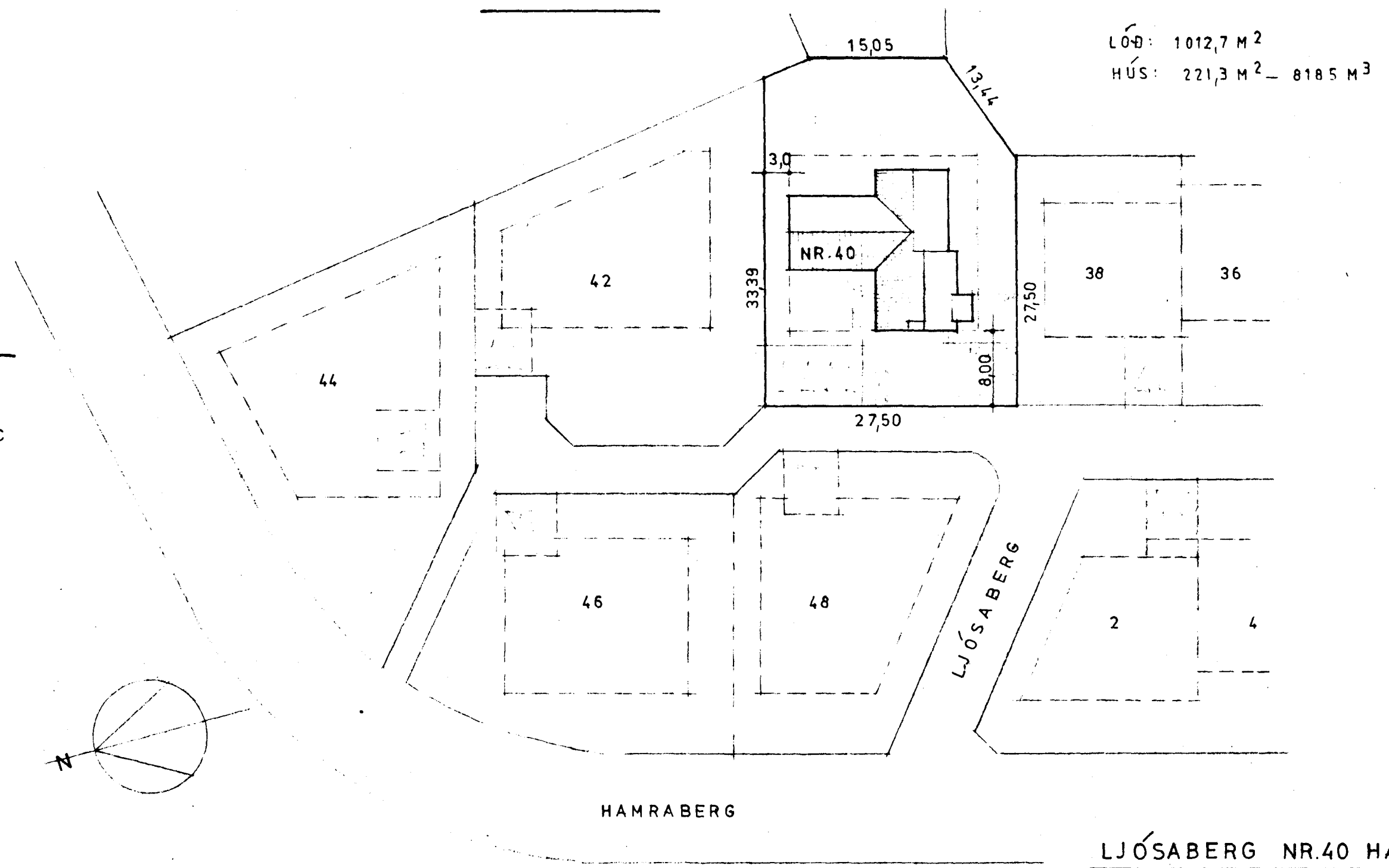


SNIÐ UM INNGANG

K-ÞILDI:  
VEGGIR VEGIÐ MÆÐALTAL  $0,8 \text{ W/m}^2 \text{ } ^\circ\text{C}$   
PAK  $0,2 \text{ ''}$



SNIÐ UM STOFU



AFSTÖÐUMYND M.1:500

LJÓSA BERG NR.40 HAFNARFIRÐI

ÍBÚÐARHÚS  
ÚTLIT, SNIÐ, AFSTAÐA M.1:100 1:500  
KÓPAVOGI Í DES. 1984

BREYTT Í JÚLÍ '86  
*Þórunn*

*E. Steindur Þórunn*