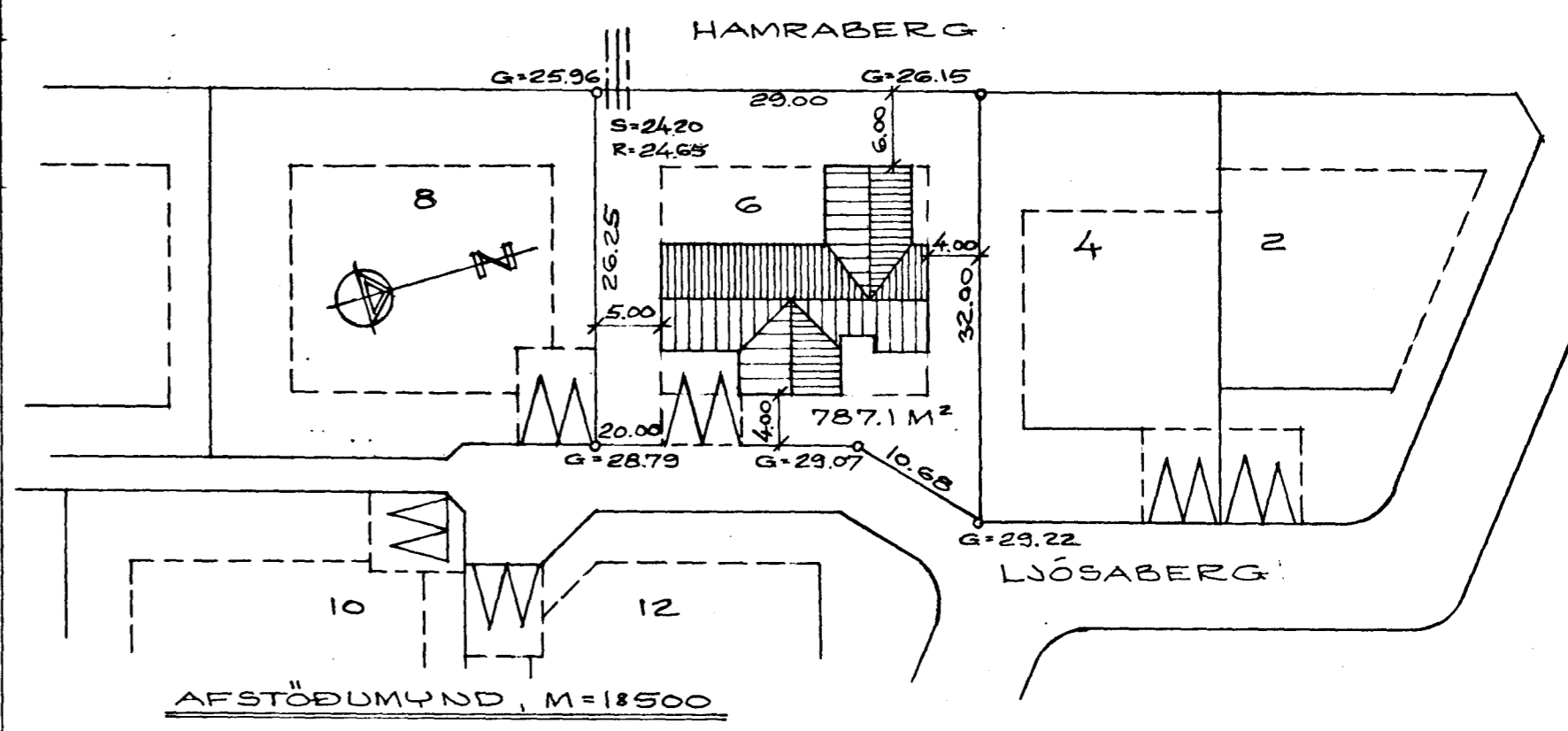
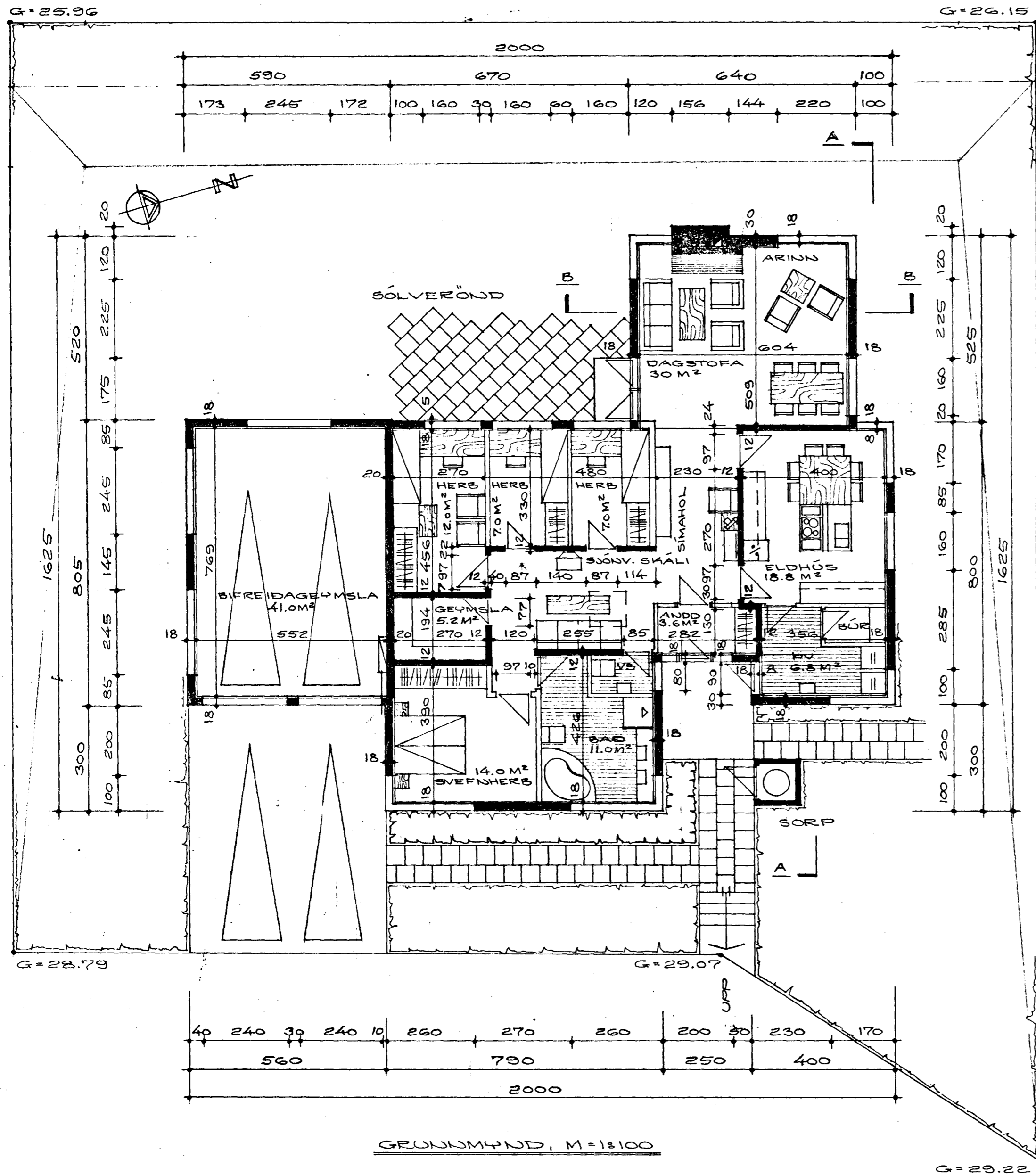
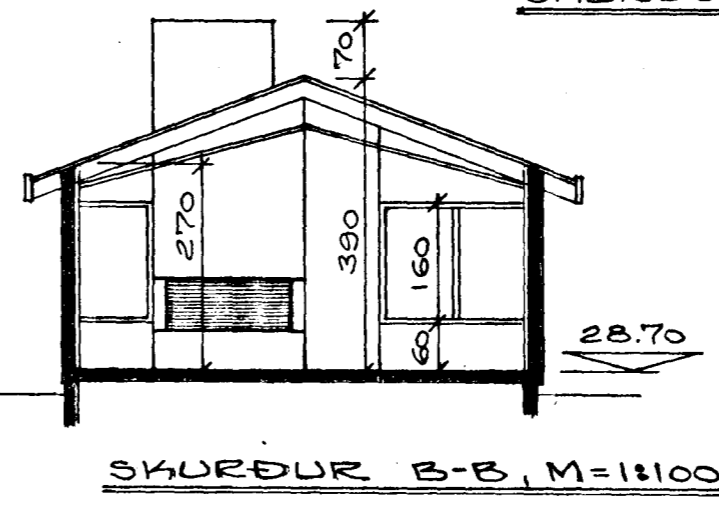
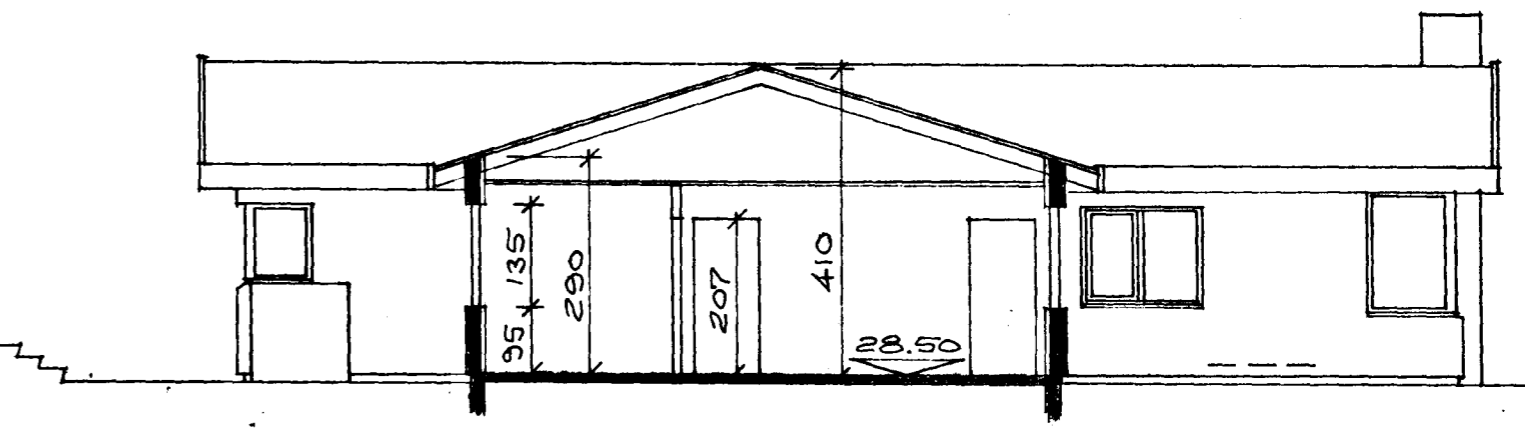


Samþykkt á fundi bygginga-  
nefndar þ. 17.13.1984  
BYGGINGAFULLTRÖUN  
Í HAFNARFIRDI  
S. Sigurdsson

Ganna skal frá omni  
eldstæði í samráði við  
stökkvillstjóra



FLATARMÁL ÍBÚÐARHÜSS = 169.5 M<sup>2</sup> BRÚTTÓ  
 FLATARMÁL BÍLFREIDARGEYMSLU = 45.9 M<sup>2</sup> BRÚTTÓ  
 FLATARMÁL ÍBÚÐARHÜSS = 151.5 M<sup>2</sup> NETTÓ  
 FLATARMÁL BÍLFREIDARGEYMSLU = 40.5 M<sup>2</sup> NETTÓ  
 NÝTINGARHLUTFALL =  $\frac{169.5 + 45.9}{787.1} = 0.274$   
 NÝTINGARHLUTFALL =  $\frac{151.5 + 40.5}{787.1} = 0.244$   
 KÖLDUNARTÖLUR:  
 ÚTYEGGIR, VEGJÓ MEDALGILDI, K=1.0  
 GÓLF, K=0.3  
 LOFT, K=0.4



5750-0060 01  
02

LJÓSABERG NR. 6  
 HAFNARFIRDI Í DESEMBER 1983  
 ARNARHEAUNI 47, 50587

Anna Þorgrímsdóttir