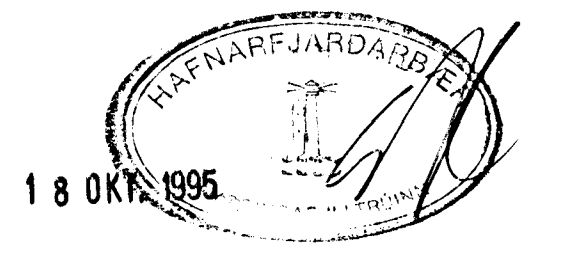
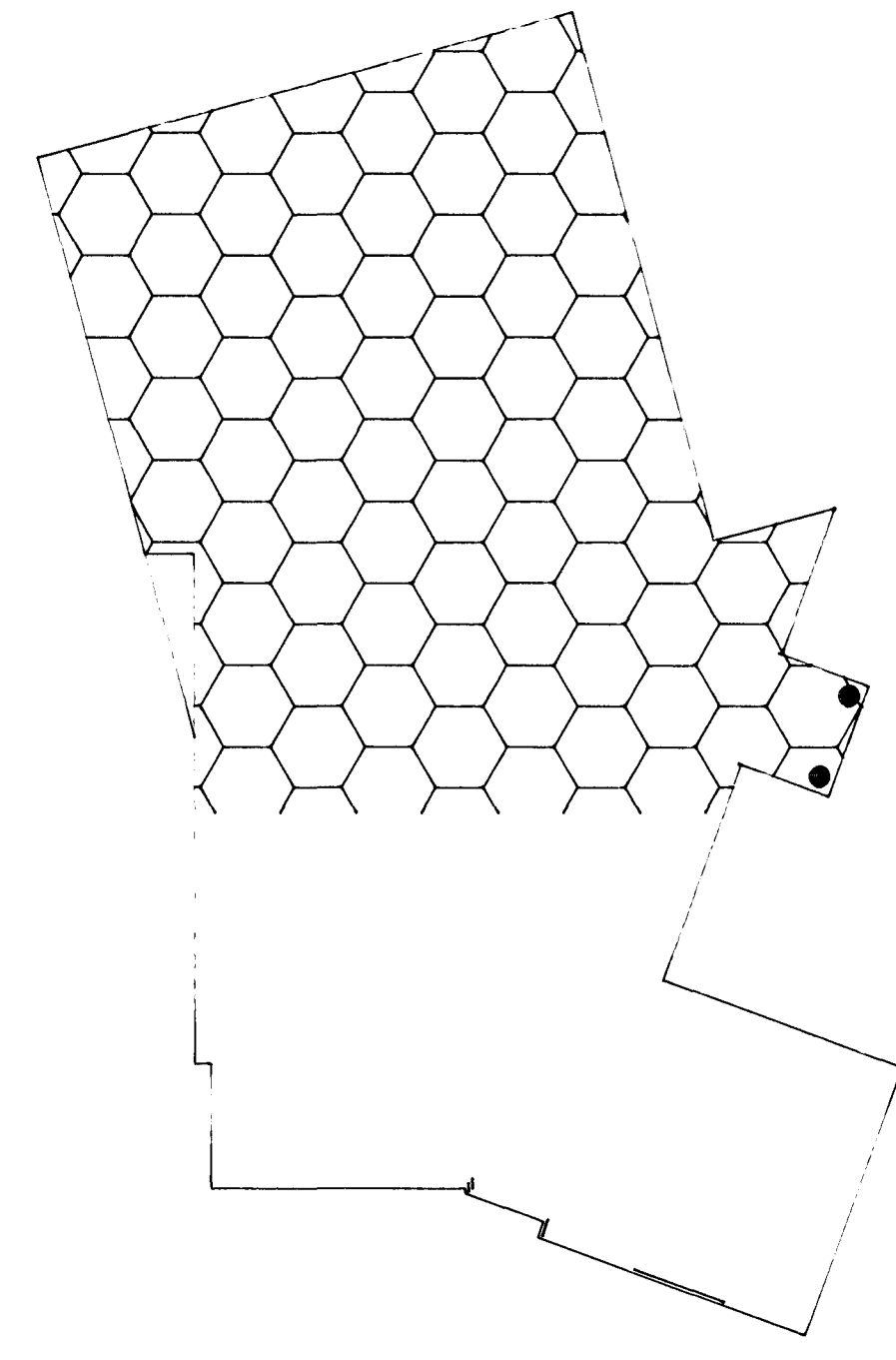
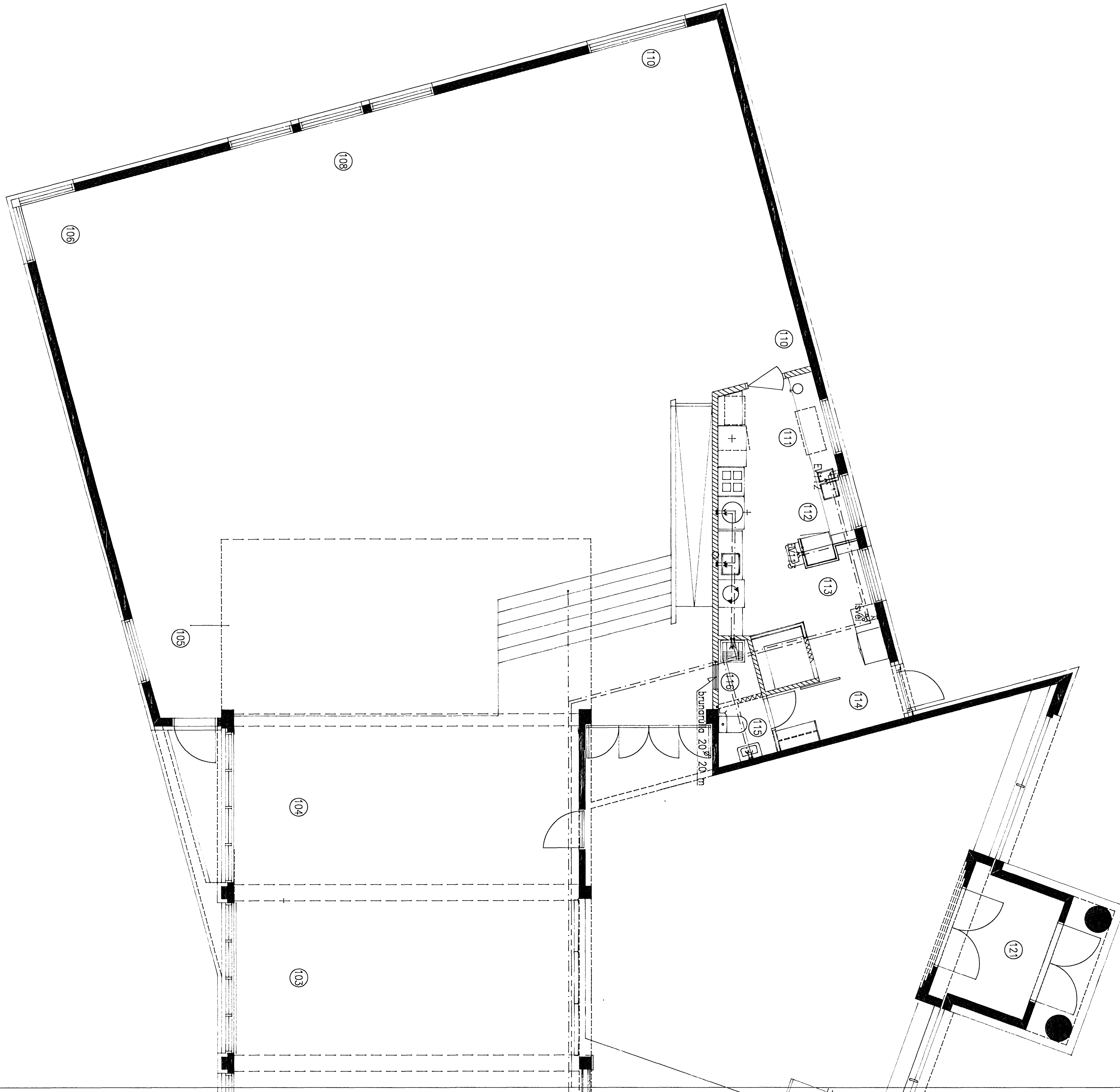


Vatnslögn: Grunnmynd neðri hæðar vesturhluta 1:50

Afstöðumynd 1:500



Pipur: Zinkhúðaðar stálpipur
 Einangrun: 15-20 mm glerullareinangrunarhólkar,
 vafðir plastdúk
 Þrýstiprófun: 6 bar í 12 stundir með köldu vatni

Sveinn Torfi Sveinsson verkfræðistofa Hraungörðum, 210 Garðabæ	Verk Teikn	9500 3-01
---	---------------	--------------

Ljósatröð 2, Hafnarfirði

Vatnslögn	1:50
Grunnmynd neðri hæðar	1:5

Sveinn Torfi Sveinsson