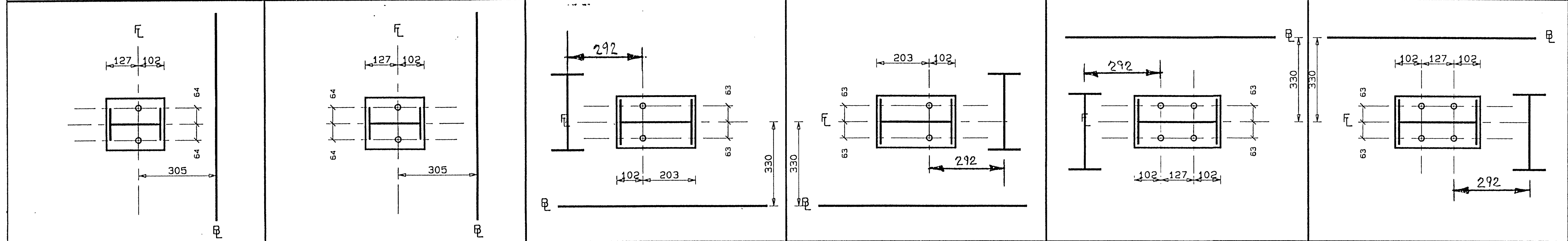
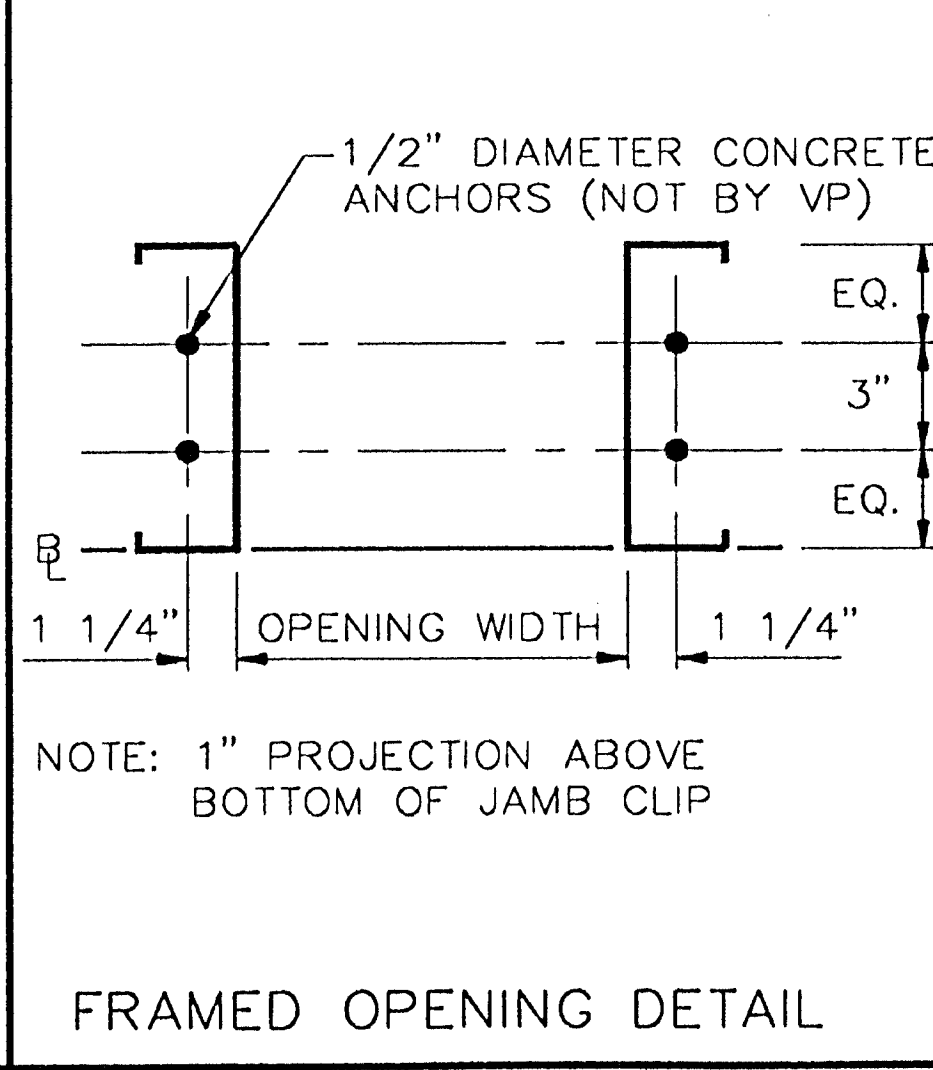
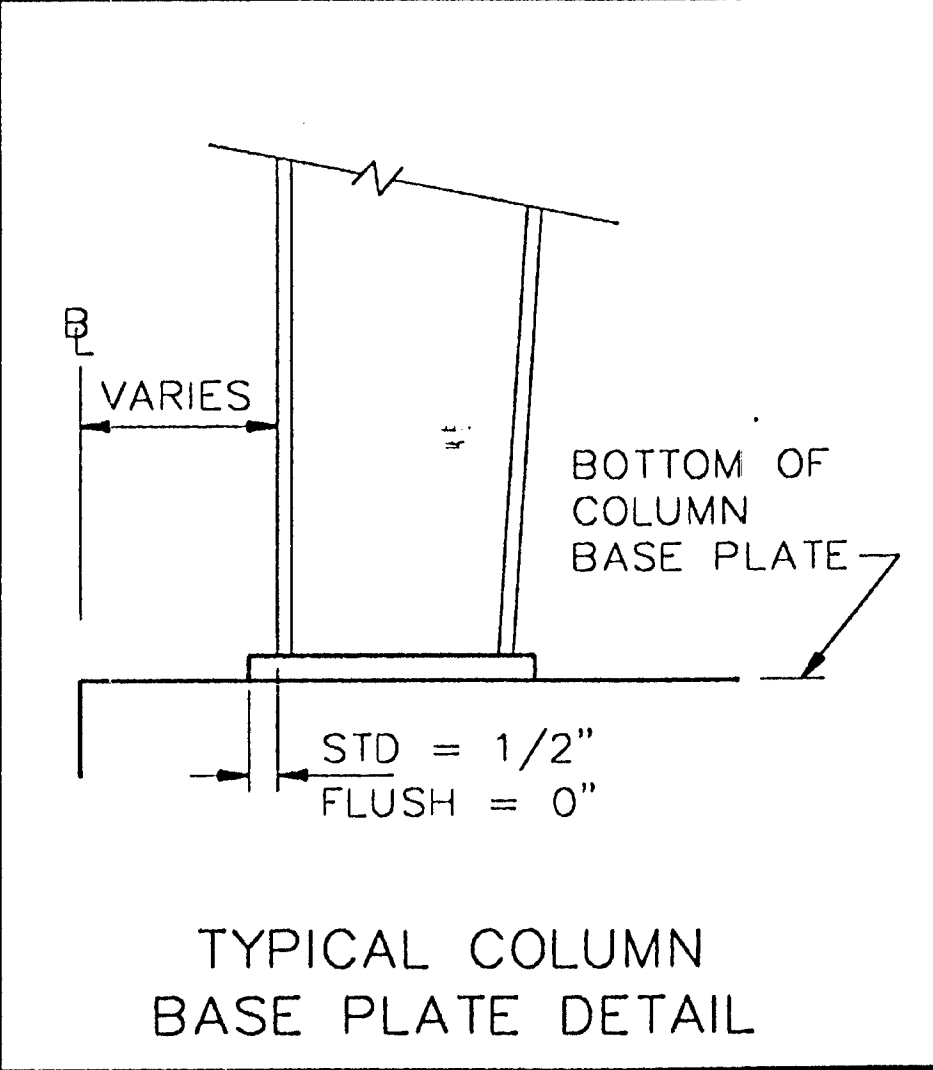
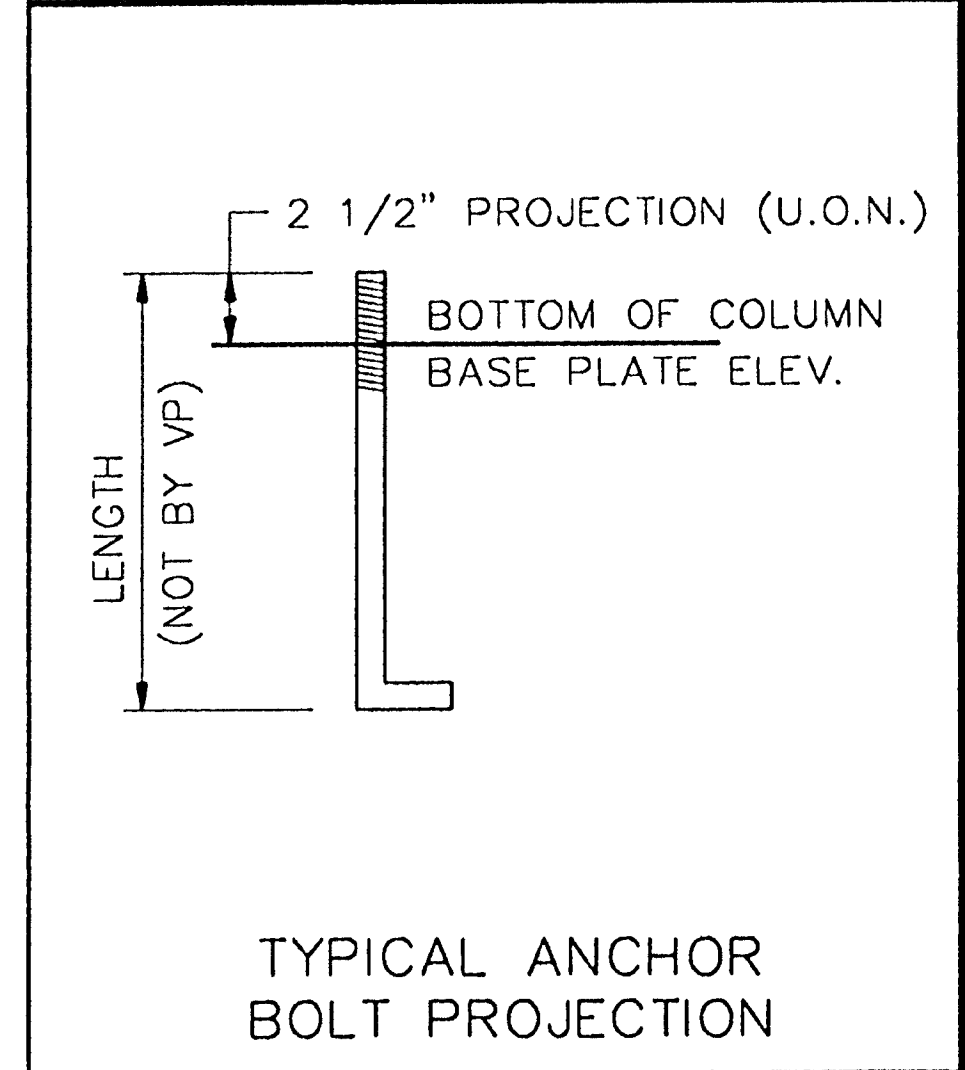


D1 (2) 25 Dia. A-36 A. Bolts Plate L=203 W=229 T=10 Elevation= 9800
 D2 (2) 25 Dia. A-36 A. Bolts Plate L=203 W=229 T=10 Elevation= 9800
 D3 (4) 19 Dia. A-36 A. Bolts Plate L=330 W=203 T=10 Elevation= 9800
 D4 (4) 19 Dia. A-36 A. Bolts Plate L=330 W=203 T=10 Elevation= 9800
 D5 (4) 19 Dia. A-36 A. Bolts Plate L=330 W=229 T=10 Elevation= 9800
 D6 (4) 19 Dia. A-36 A. Bolts Plate L=330 W=203 T=10 Elevation= 9800



D7 (2) 19 Dia. A-36 A. Bolts Plate L=229 W=203 T=10 Elevation= 9800
 D8 (2) 19 Dia. A-36 A. Bolts Plate L=229 W=203 T=10 Elevation= 9800
 D9 (2) 19 Dia. A-36 A. Bolts Plate L=305 W=203 T=10 Elevation= 9800
 D10 (2) 19 Dia. A-36 A. Bolts Plate L=305 W=203 T=10 Elevation= 9800
 D11 (4) 19 Dia. A-36 A. Bolts Plate L=330 W=203 T=10 Elevation= 9800
 D12 (4) 19 Dia. A-36 A. Bolts Plate L=330 W=203 T=10 Elevation= 9800



Byggingeftirlit Hafnarfjarðar
 Algröttuvegur
 20 MARS 2000
 Sigríbjartur Halldórsson

VERKFRÉDISTOFAN ORDLANDS ehf.

On: filesrv Projky: 38890 Bldg: 2 Plane: 1 This Drawing is Sealed only as to the Components furnished by VP Buildings

- CONCRETE, GROUT, ANCHOR BOLTS, AND ANY OTHER EMBEDDED ITEMS ARE TO BE FURNISHED BY OTHERS
- ANCHOR BOLT DIAMETERS WERE DETERMINED BY ALLOWABLE SHEAR AND TENSION PER AISC SPECIFICATIONS (FY = 36 KSI). ANCHOR BOLT LENGTH AND METHOD OF TRANSFERRING FORCES FROM ANCHOR BOLTS TO FOOTINGS ARE TO BE DETERMINED BY OTHERS.
- DESIGN LOADS AND REACTIONS ARE FURNISHED ON OTHER DOCUMENTS.
- FOUNDATION MUST BE LEVEL, SQUARE, AND SMOOTH. ANCHOR BOLTS MUST BE ACCURATELY PLACED AS SHOWN ON THIS DRAWING OR STEEL WILL NOT FIT.

Building Code:	86MBMA
Live Ld (w/10 Red):	102.5 kgsm
Coll. Ld (gravity):	24.4 kgsm
Coll. Ld (uplift):	0.0 kgsm
Wind Speed:	170.6 kmph
Wind Exp. Cat.:	C
Ground Snow:	146.5 kgsm
Roof Snow:	102.5 kgsm
Snow Exp. Cat.:	3
Seismic Zone:	3
Building Use Cat.:	1
Auxiliary Loads	NONE

This Drawing, including the information hereon, remains the property of VP Buildings. It is provided for Erecting the Building described in the applicable Purchase Order and shall not be modified, reproduced or used for any other purpose without prior Written Approval of VP Buildings. The General Contractor and/or Erector is solely responsible for accurate, good quality workmanship in erecting this Building in conformance with this Drawing. Details referenced in this Drawing, all applicable VP Buildings Erection Details and all industry standards pertaining to proper erection, including the correct use of temporary bracing.

REV	DATE	BY	DESC.	BUILDER
				Varco-Pruden Exports
				CUSTOMER Sindri
				LOCATION Iceland
				PROJECT Sindri Workshop
				BUILDING workshop 2

Anchor Bolt

QUOTE # ME99012531-001

VP BUILDINGS
VARCO-PRUDEN

DATE	07/26/99
TIME	08:34
DRAW/CHECK	DHG
PAGE	2