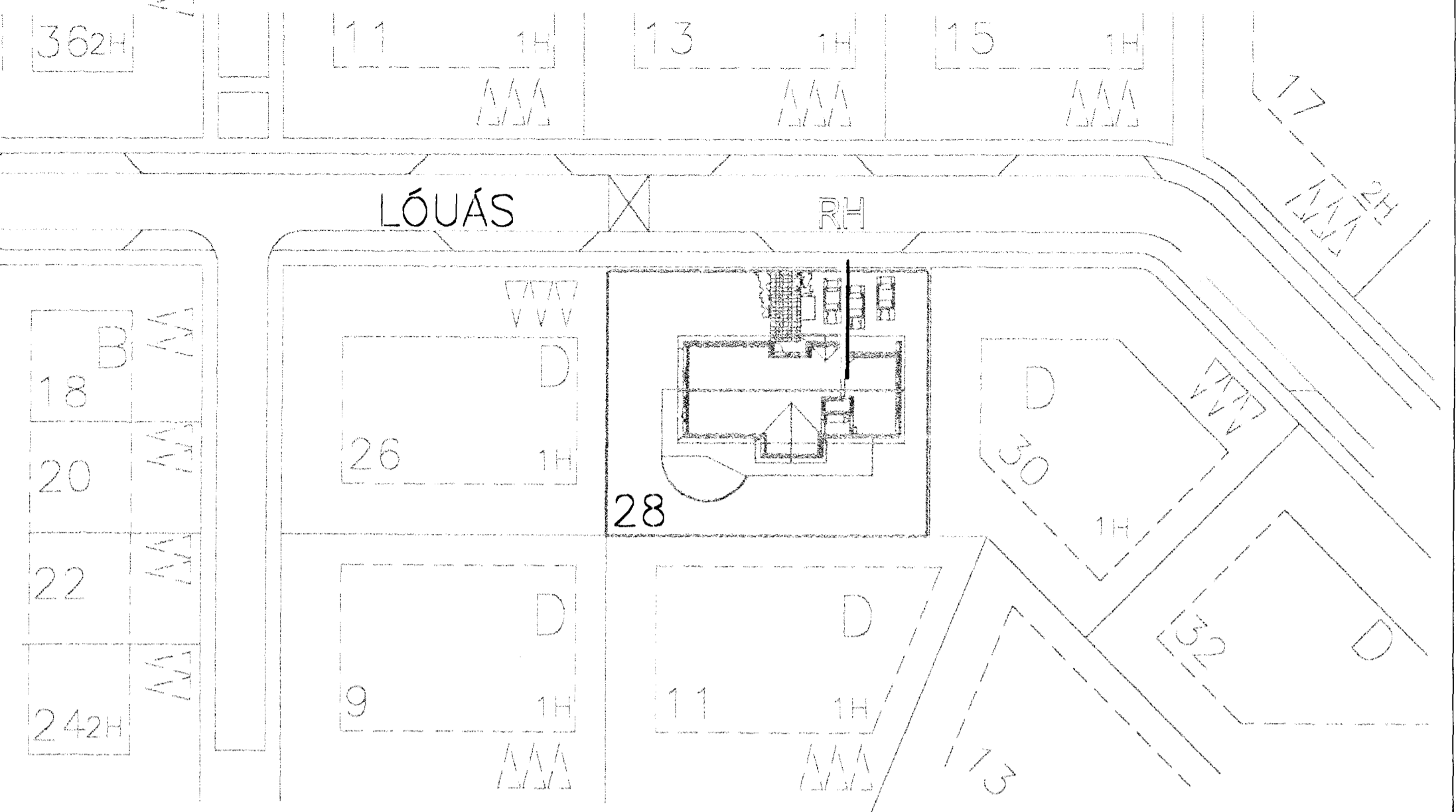
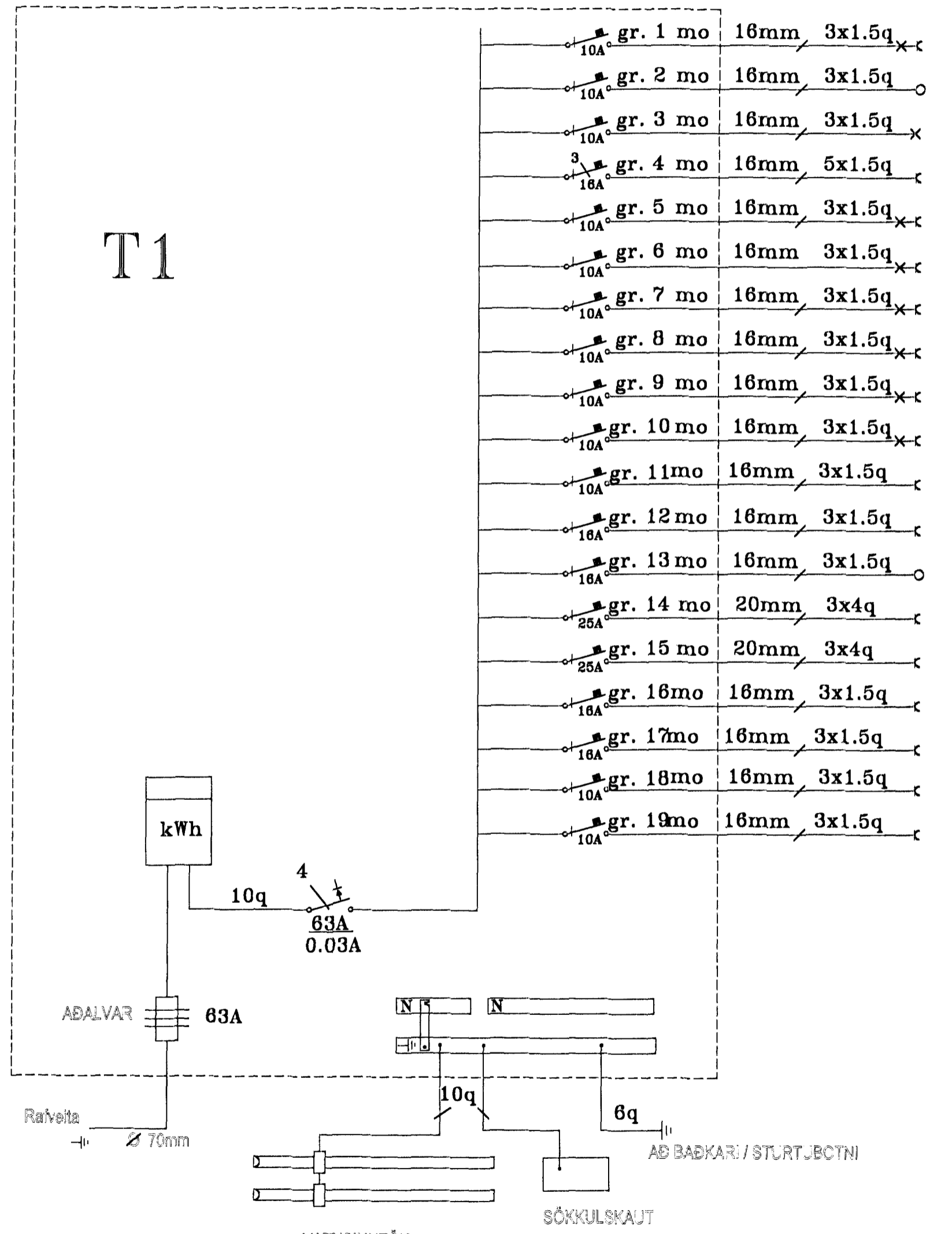


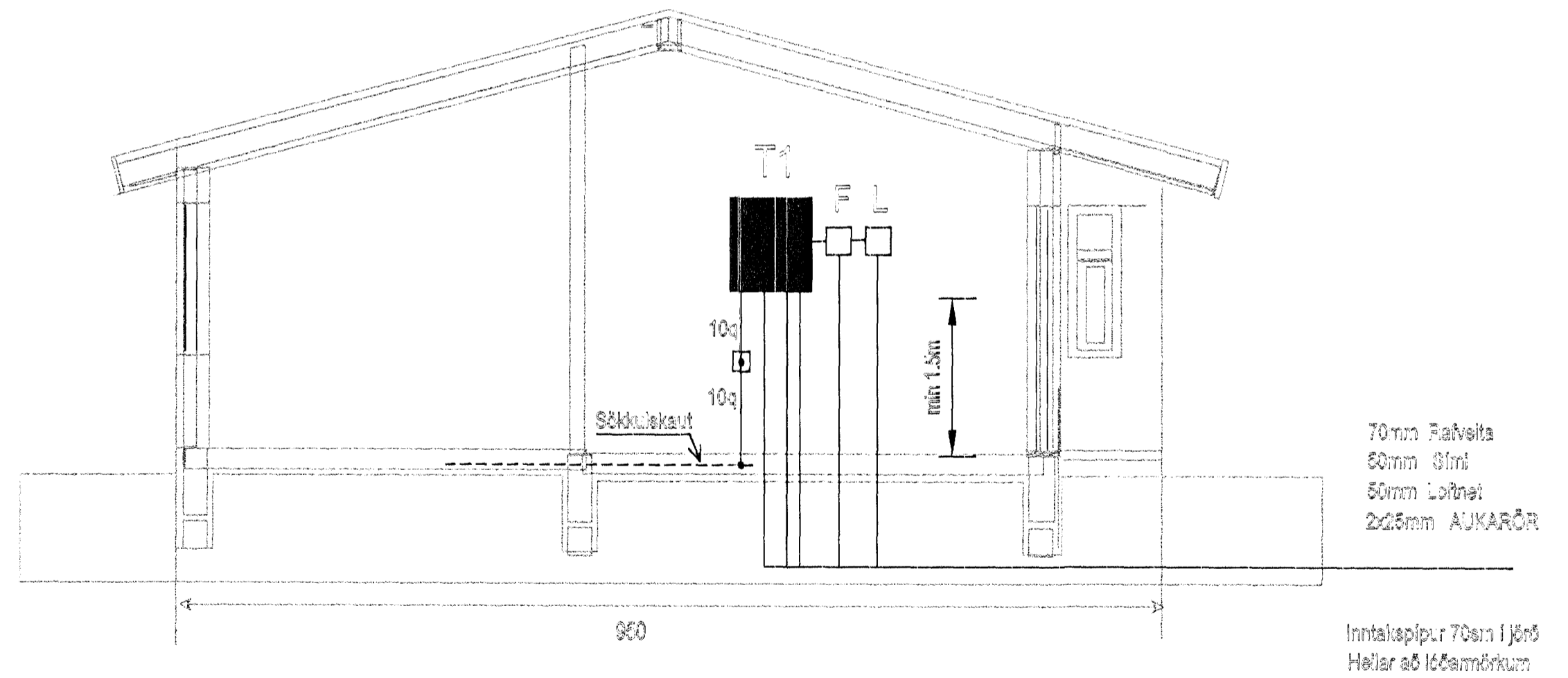
ÁLFTAÁS



T1



- gr. 1 mo 16mm 3x1.5q Bilgæmala
- gr. 2 mo 16mm 3x1.5q Bilgæmala/hurðaport
- gr. 3 mo 16mm 3x1.5q Andl., WC, Útlífa
- gr. 4 mo 16mm 5x1.5q 3-Fasa Tengill í bilgæmala
- gr. 5 mo 16mm 3x1.5q Þv. og gæmala.
- gr. 6 mo 16mm 3x1.5q Stofa
- gr. 7 mo 16mm 3x1.5q Herb., Hjón
- gr. 8 mo 16mm 3x1.5q Vinnuh., Bað, Herb.
- gr. 9 mo 16mm 3x1.5q Hel
- gr. 10 mo 16mm 3x1.5q Eldhúsa (Ljós/Ékápúr)
- gr. 11 mo 16mm 3x1.5q Eldhúsa-benglar
- gr. 12 mo 16mm 3x1.5q Uppþvottavél
- gr. 13 mo 16mm 3x1.5q Örbylgjuör
- gr. 14 mo 20mm 3x4q Auka eldavél.
- gr. 15 mo 20mm 3x4q Eldavél
- gr. 16 mo 16mm 3x1.5q Þvottavél
- gr. 17 mo 16mm 3x1.5q Þunntar
- gr. 18 mo 16mm 3x1.5q Auka var
- gr. 19 mo 16mm 3x1.5q Auka var



70mm Raflögn  
 50mm Sími  
 50mm Loftnet  
 2x25mm AUKARÖR

Inntakspírur 70cm í Jörð  
 Hella að lóðarmörkum

BREYTING NR.	DAGS.	
	Lóuás 28 Hamarirófi	
RAFLÖGN & SMÁSPENNA	HANNAÐ	GSG
	TEIKNAD	GSG
	DAGSEYH.	Feb. 2002
	BLAÐ	3 AF 3
	KVAREÐI	1:100 / 1:500
VERKFR.	2002	
GSG	Guðm. Steinn Guðmundsson Hf.: 170048 2739 s.: 5554696	