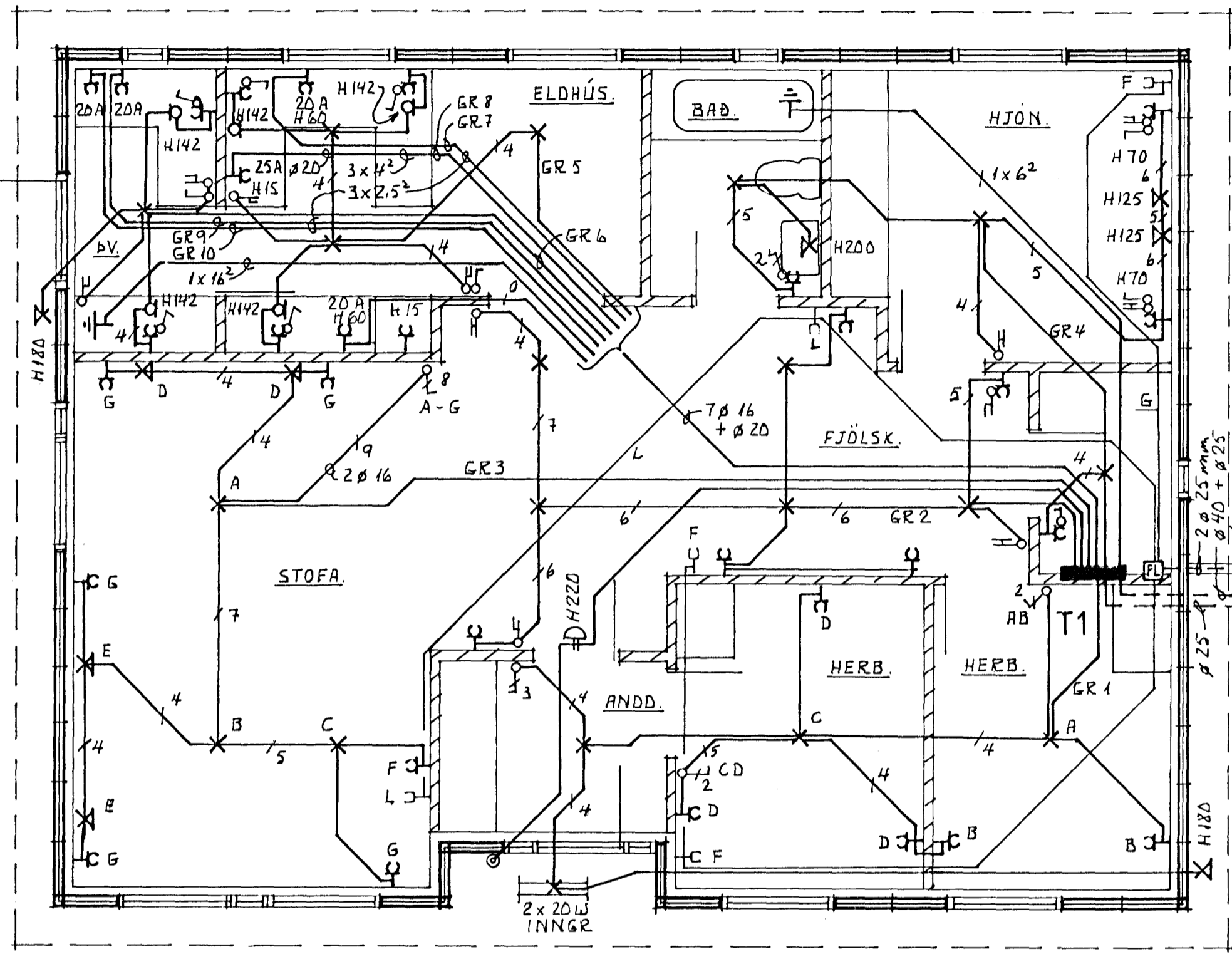
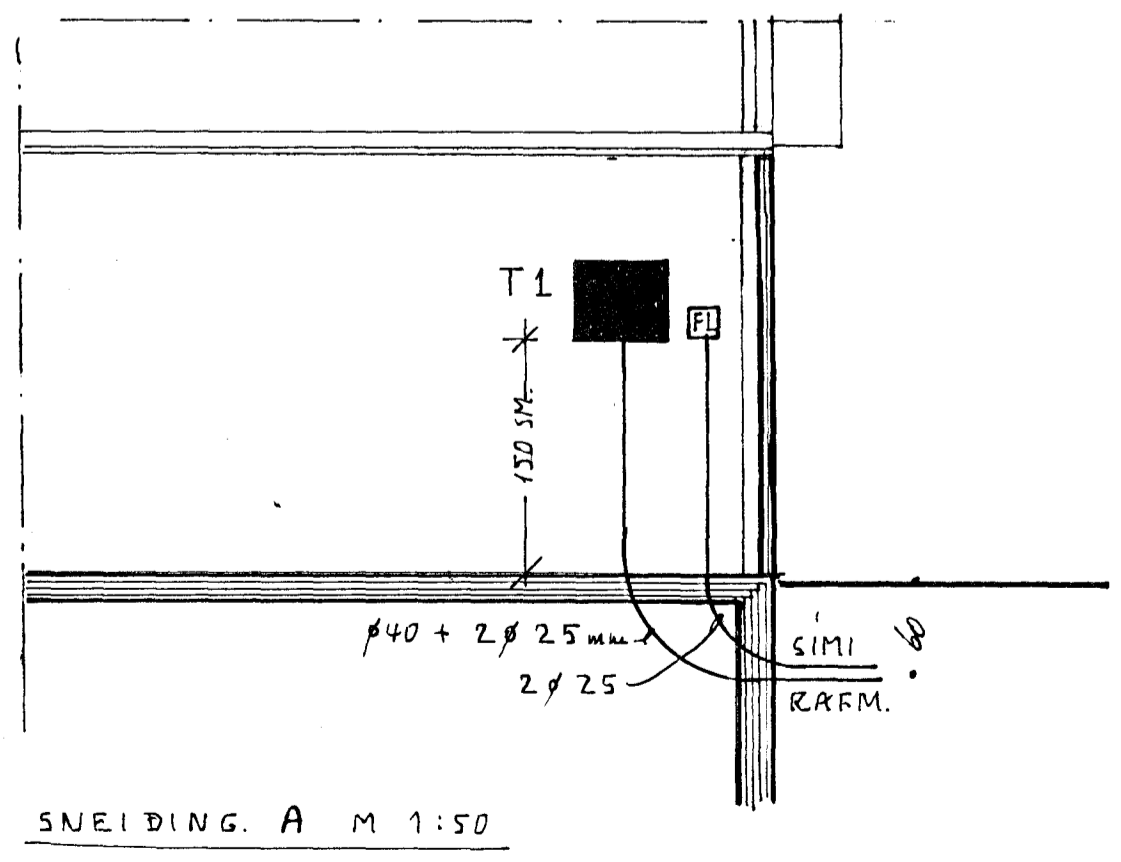
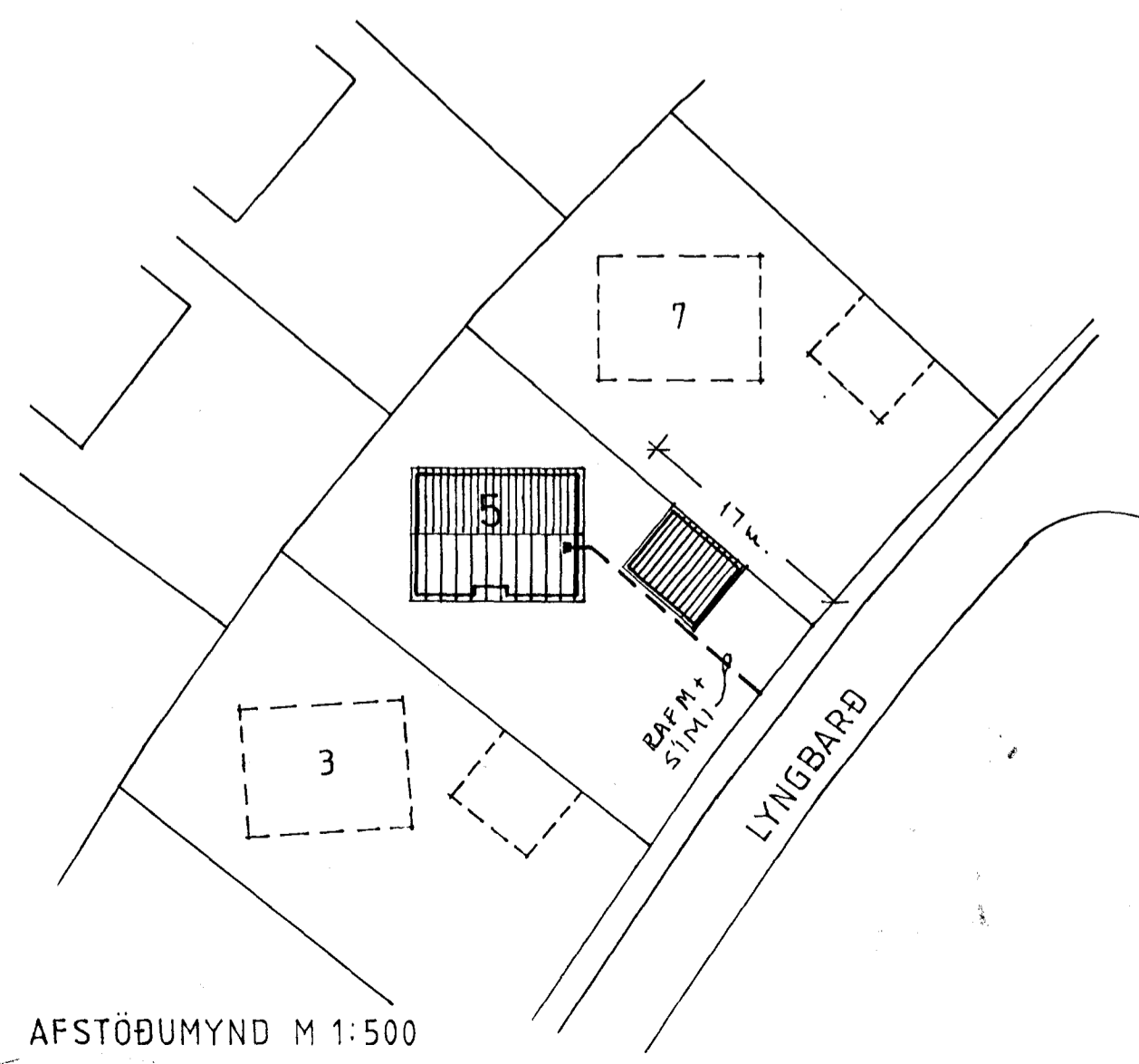
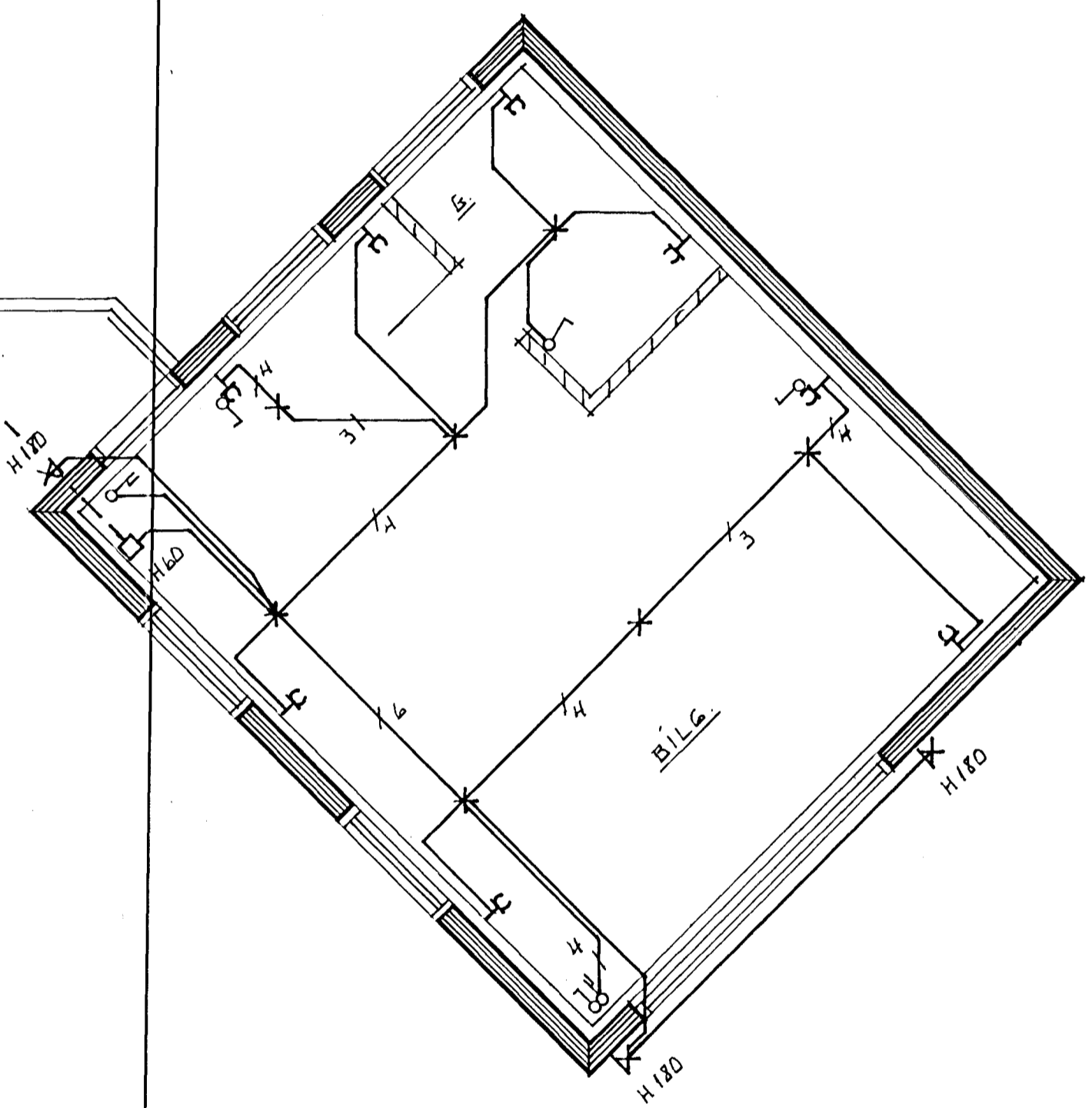


Húsvéita nr. 3020 Teikning nr. 2300
 Samþykkt þ. 18-7 1984
 Í.H. RAÐVEITU HAFNARFIJARDAR
Jens Einarsson
 Eftirlitamaður rannsókn

13/9 1984
 RAÐVEITU HAFNARFIJARDAR
Walter Hödlberg



JARÐSTR. 3x25² DYPT 60 SM.
 DYPT 60 SM.
 RAÐM. SIMI + LOFTIN
 2 x 25 mm
 ø 40 + ø 25



2300

LJÓSTÆKNI <small>Teiknistofa Skúlagötu 63 Reykjavík, sími 11041 Magnús Siguroddsson teknifræðingur ttfi</small>	LYNGBARD 5, HAFNARFIJÐI.	
	RAFLÖGN GRUNNMYND M 1:50 AFSTÖÐUMYND M 1:500 SNEIÐING M 1:50	VERK NR. 745 LT 1127 BLAD 1 AF 2 R3.10. <i>M. B.</i>

AFSTÖÐUMYND M 1:500