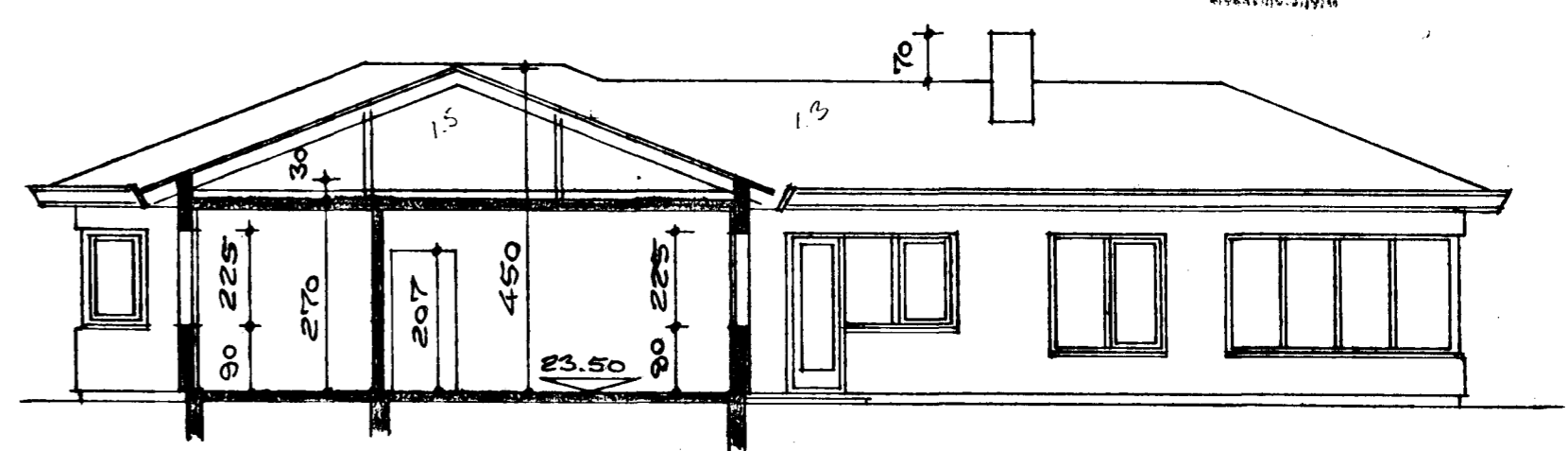
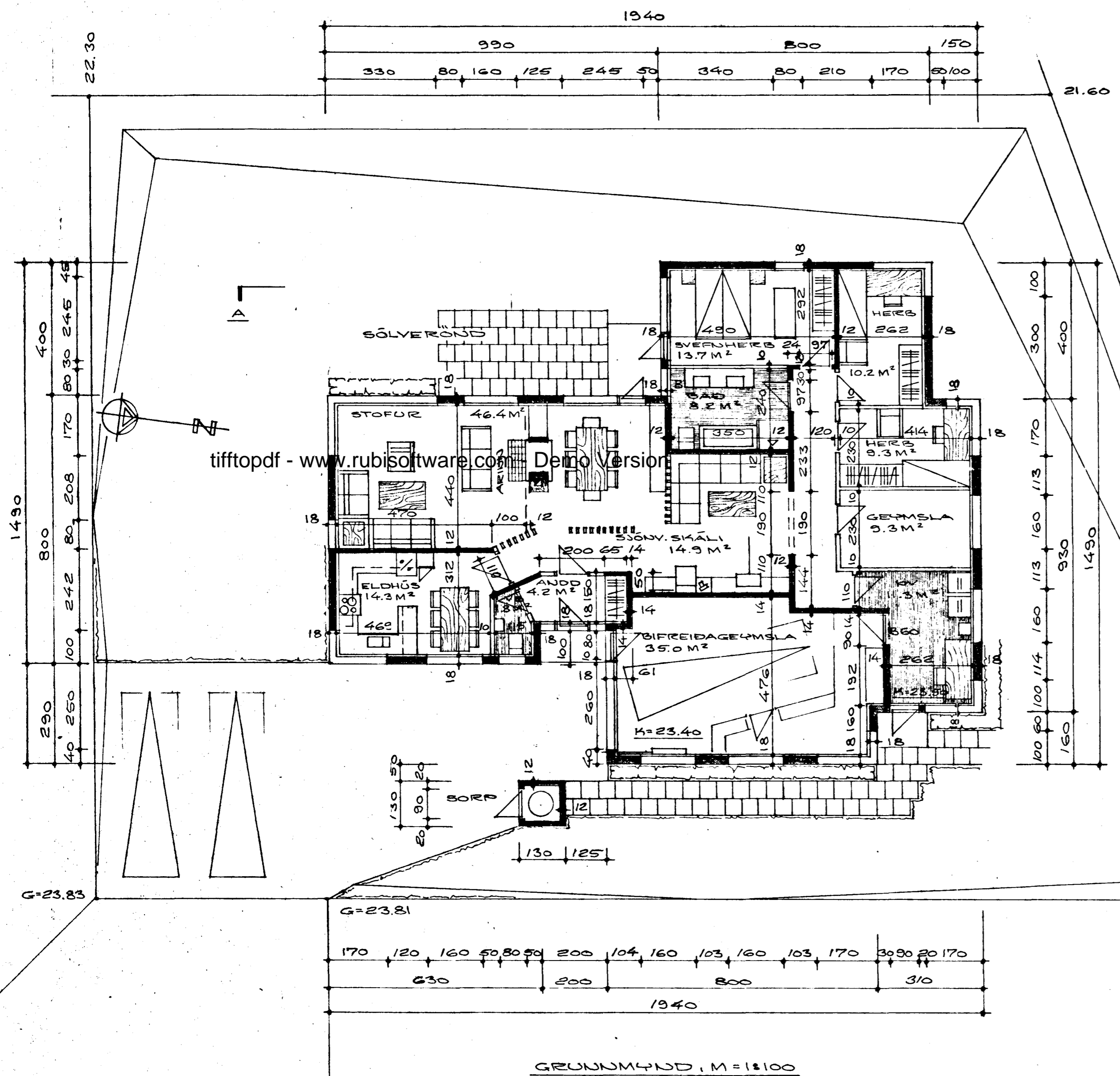


Samþykkt á fundi bygginga-  
nefnda nr. 3 / 7 1985  
BYGGINGAVALTRÚDIN  
Í HAFNARFIRDI  
*Þorbjörn Þrándsson*

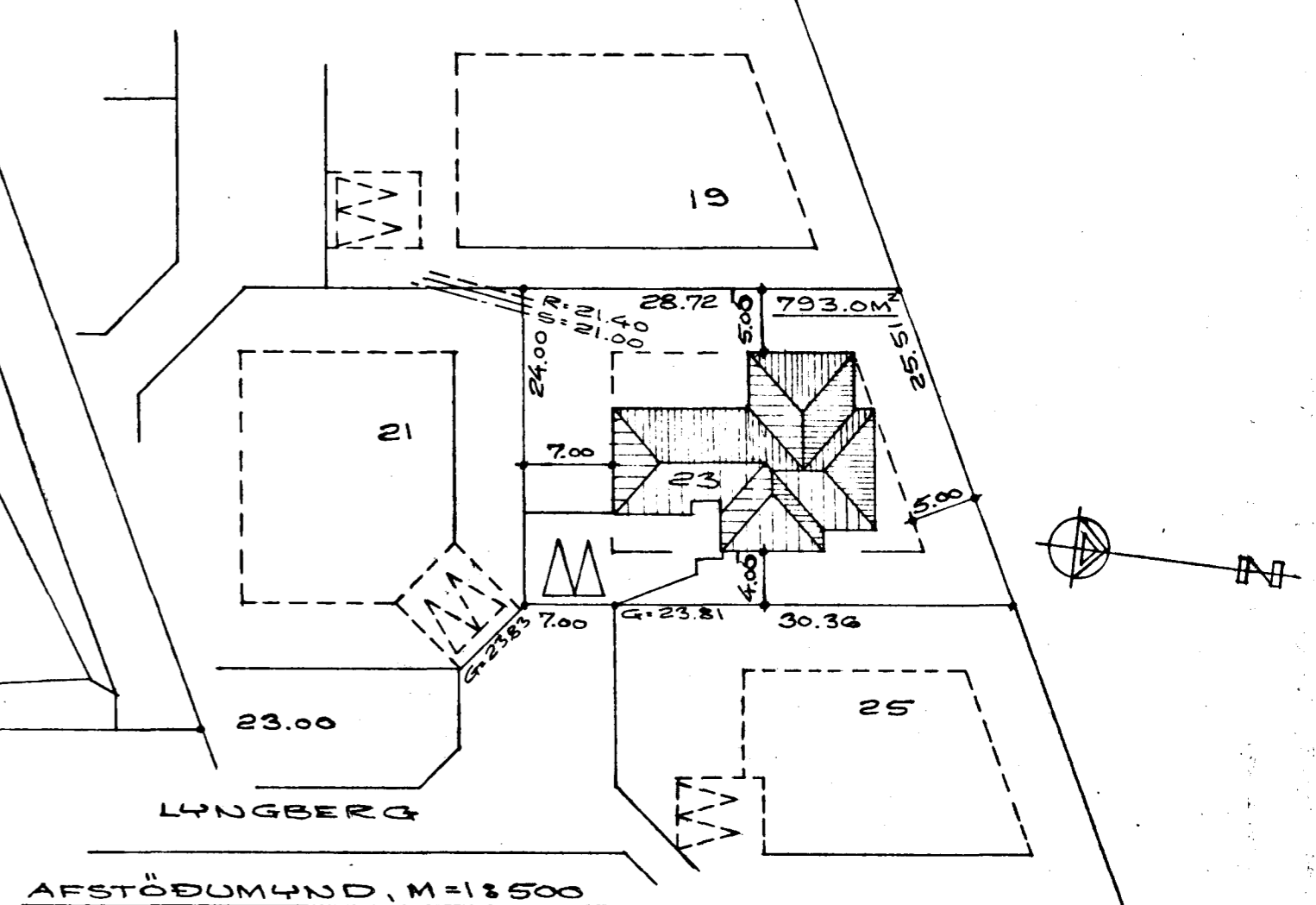
Önnur skal frá önnu  
öldstæði í samráði við  
stjórnvaldið.



SKURÐUR A-A, M=1:100

FLATARMÁL ÍBUDARHÚSS = 175.0 M<sup>2</sup> BRÚTTÓ  
 FLATARMÁL BIFREIDAGEYMSLU = 38.5 M<sup>2</sup> BRÚTTÓ  
 FLATARMÁL ÍBUDARHÚSS = 162.4 M<sup>2</sup> NETTÓ (20CM VEGGJAFÞYKKT)  
 FLATARMÁL BIFREIDAGEYMSLU = 35.8 M<sup>2</sup> NETTÓ (20CM V. ÞYKKT)  
 ÚÞTINGAHLUTFALL =  $\frac{175.0 + 38.5}{793} = 0.269$   
 ÚÞTINGAHLUTFALL =  $\frac{162.4 + 35.8}{793} = 0.25$

WÖLDUNARTÖLUR  
 ÚTVEGGIR:  $k = 0.4 \text{ W/m}^2\text{°C}$   
 ÞAK:  $k = 0.2 \text{ W/m}^2\text{°C}$   
 GOLF:  $k = 0.3 \text{ W/m}^2\text{°C}$   
 GLUGGA, KARMAR + GLER, VEGID MEDALTAL:  $k = 2.5 \text{ W/m}^2\text{°C}$



AFSTÖÐUMYND, M=1:500

LYNGBERG NR. 23  
 HAFNARFIRDI Í JÚNI 1985  
 ARNARHRAUNI 47, 651412-50587

*Ólafur Magnússon A.E.*