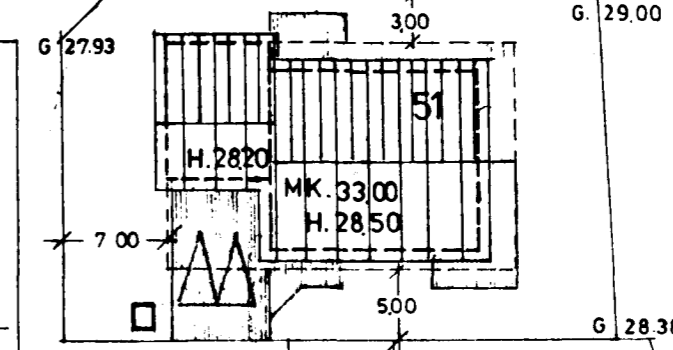
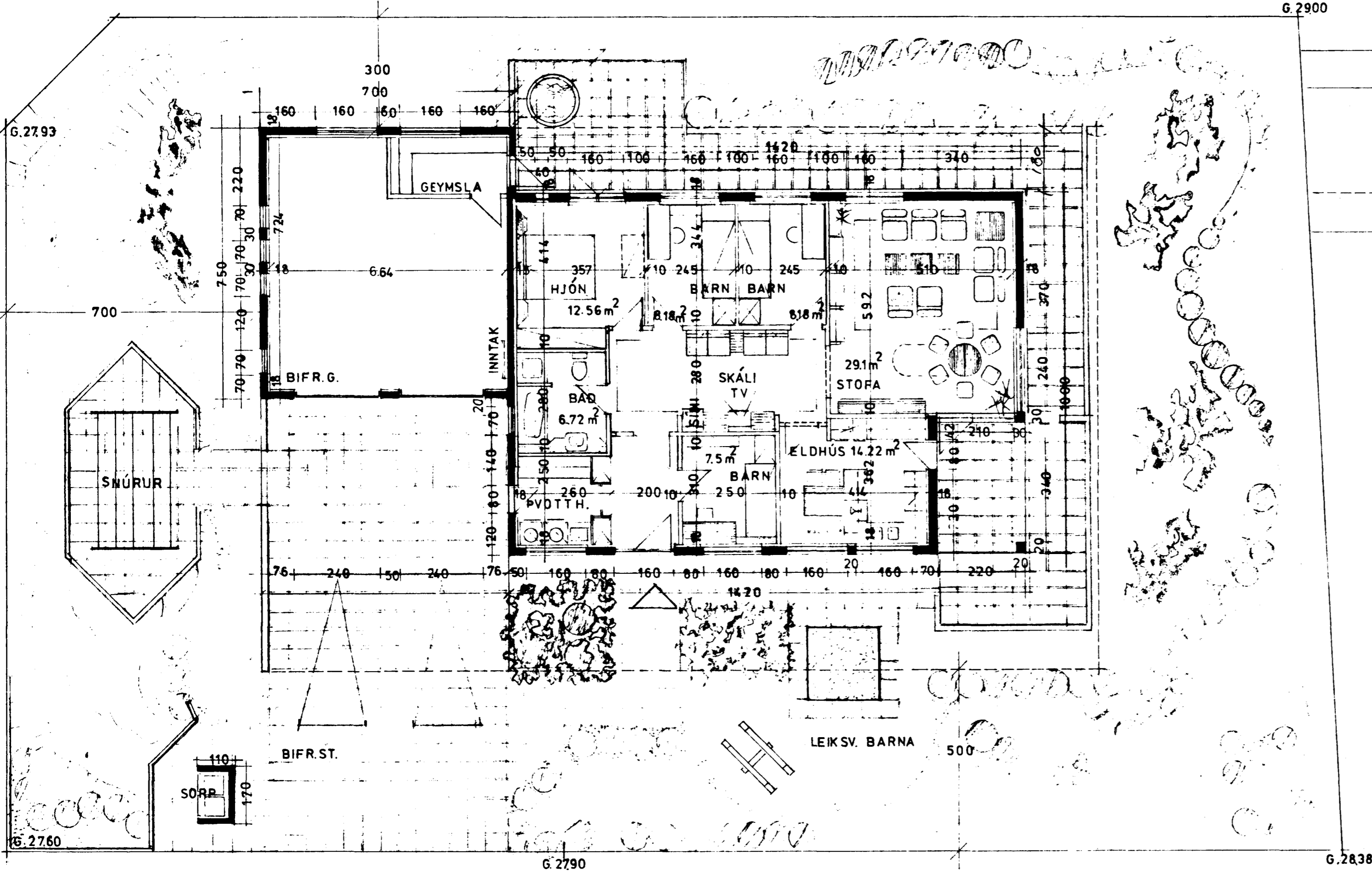
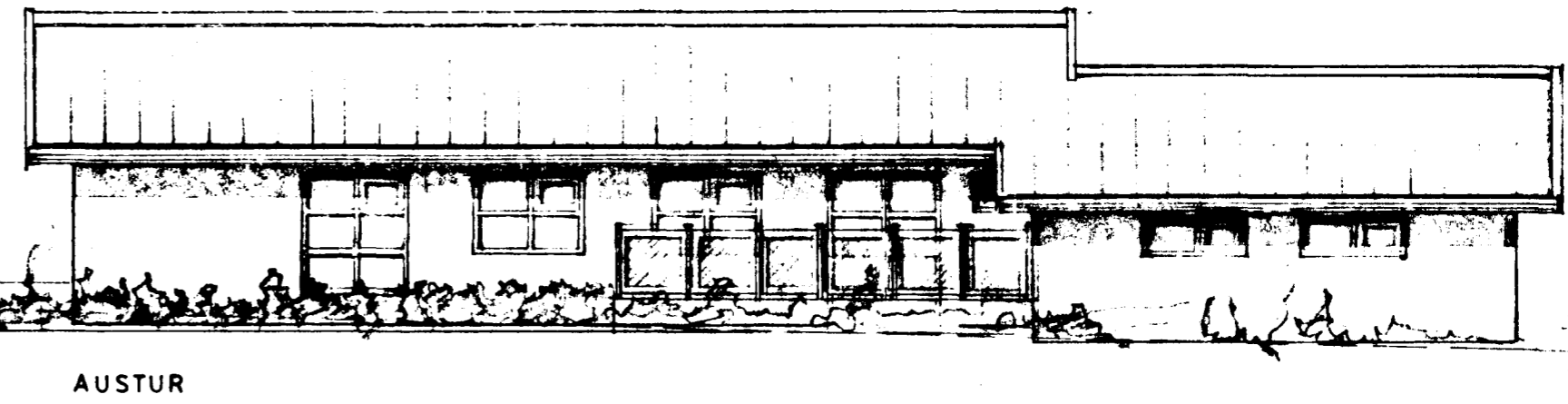
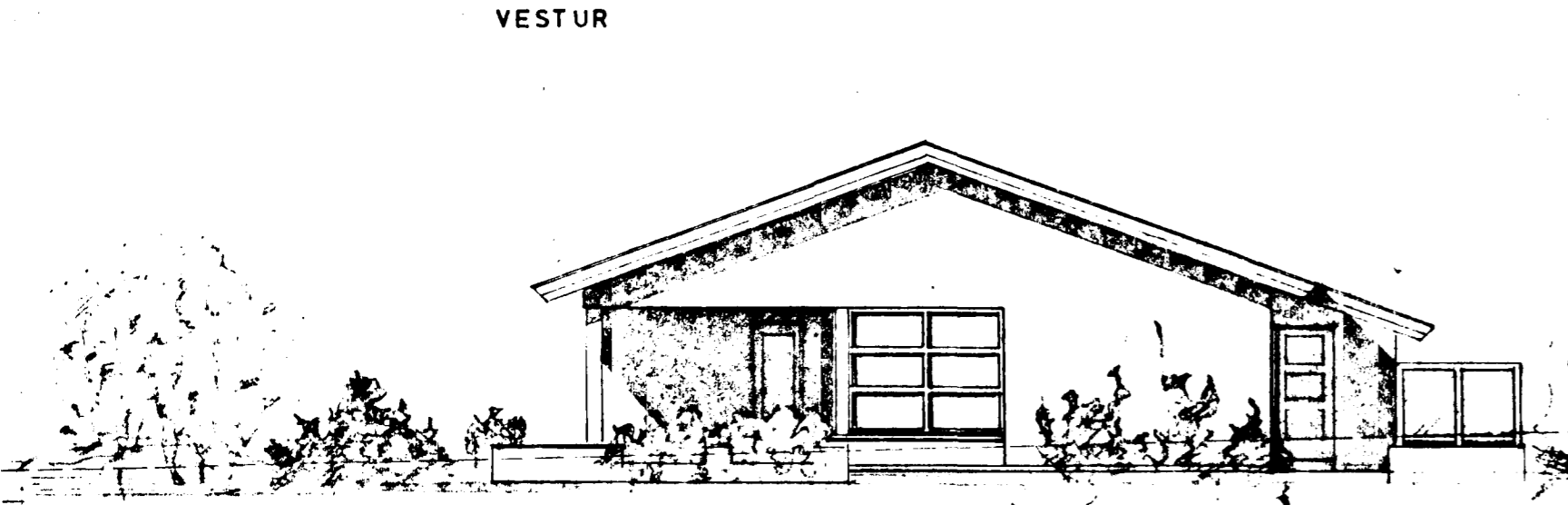
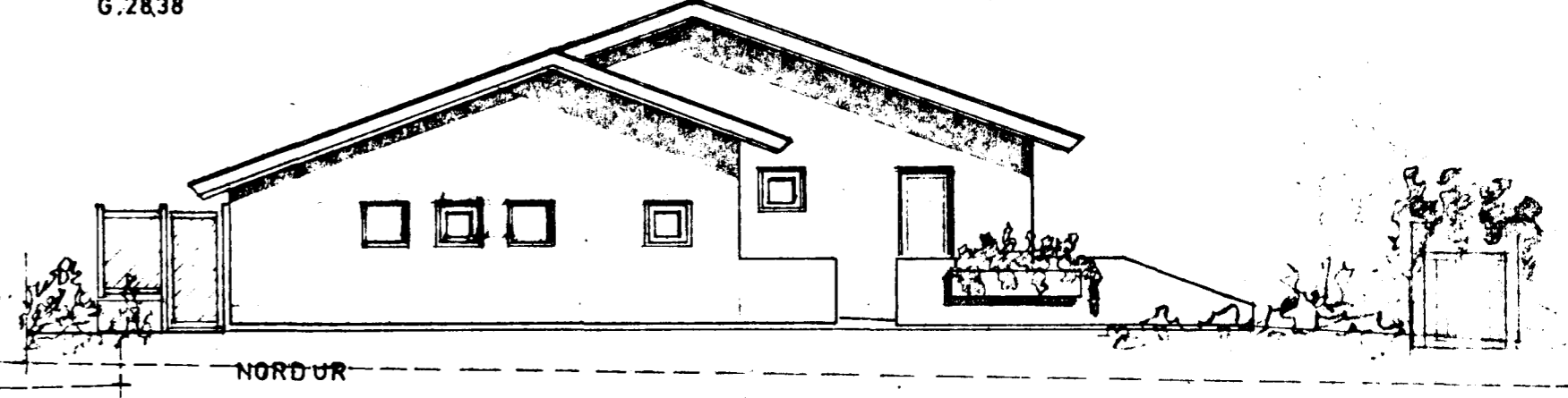
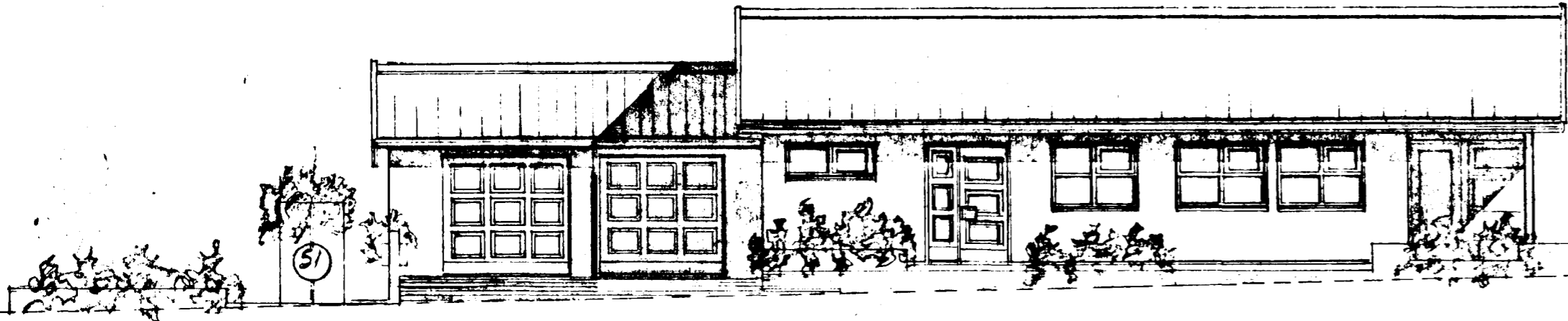
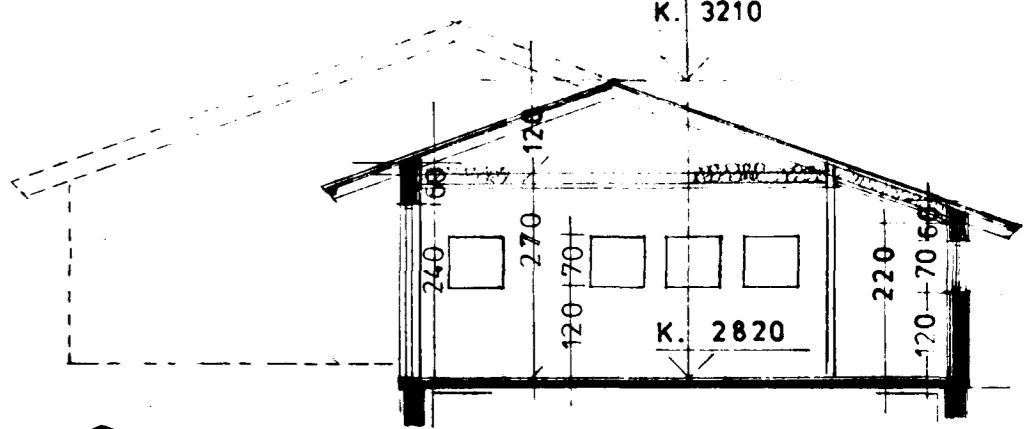
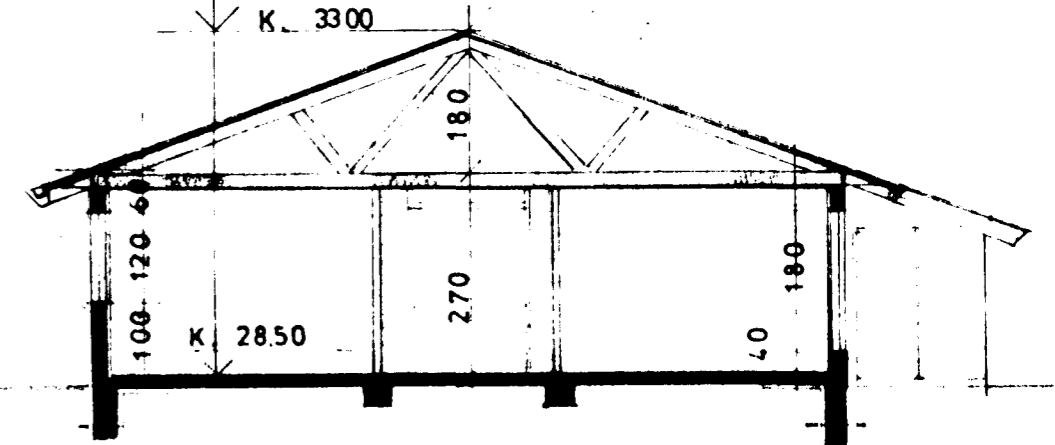


Samþykkt á fundi byggingar-
nefndar þ. 9/11/87
BYGGINGAFULLTRÚINN
Í HAFNARFIRÐI
Andri Hjart



LYNGBERG 51.
ÍB. HÚS 132.4 m² BRÚTTÓ 185.56 m²
BIFR.G. 51.47 m²
ÍB. HÚS 563.2 m³
BIFR.G. 88.7 m³ → 658 m³ BR
ATH. M² Í HERB. - NETTÓ



MÁL SKULU YFIRFARIN

Óli Þórhildur
Arkitekt