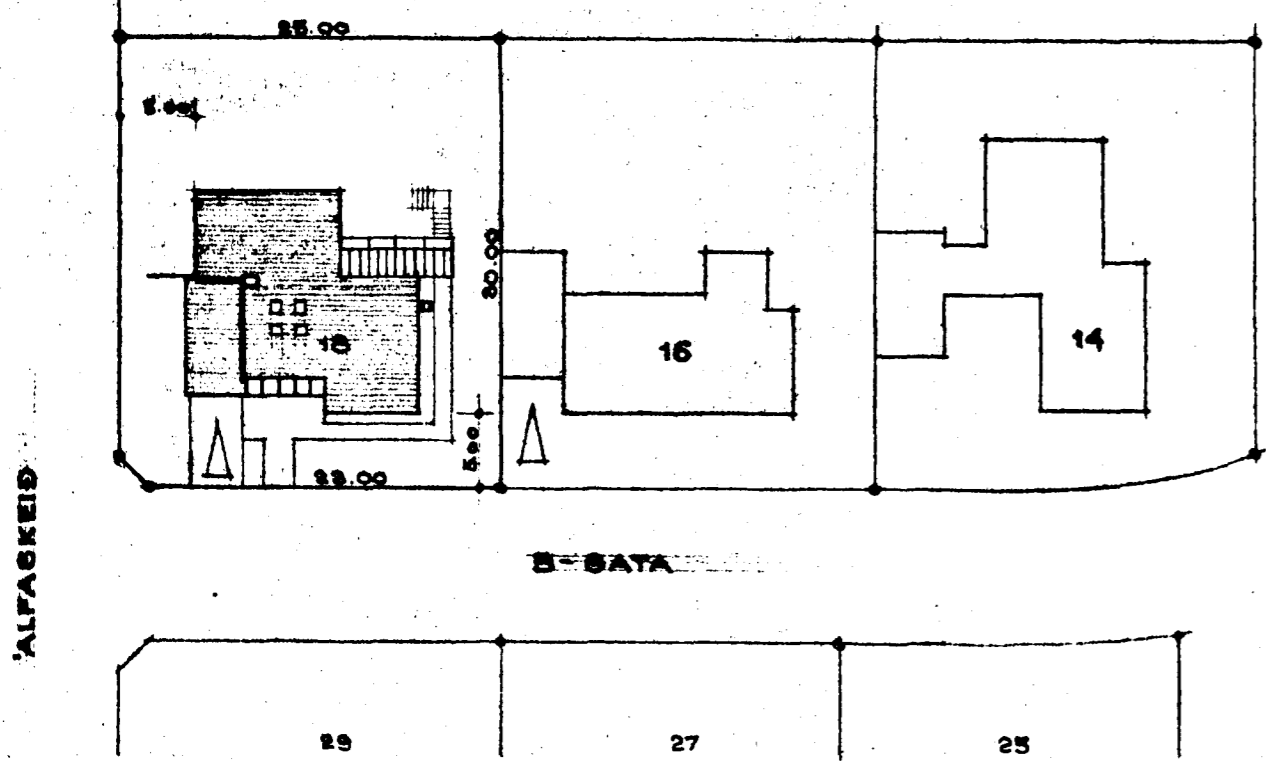


Samþykkt á fundi bygginga-
nefndar þ. 17/4/1968

BYGGINGAFULLTRÚINN
Í HAFNARFIRÐI

Sigurður Þ. Þorláksson

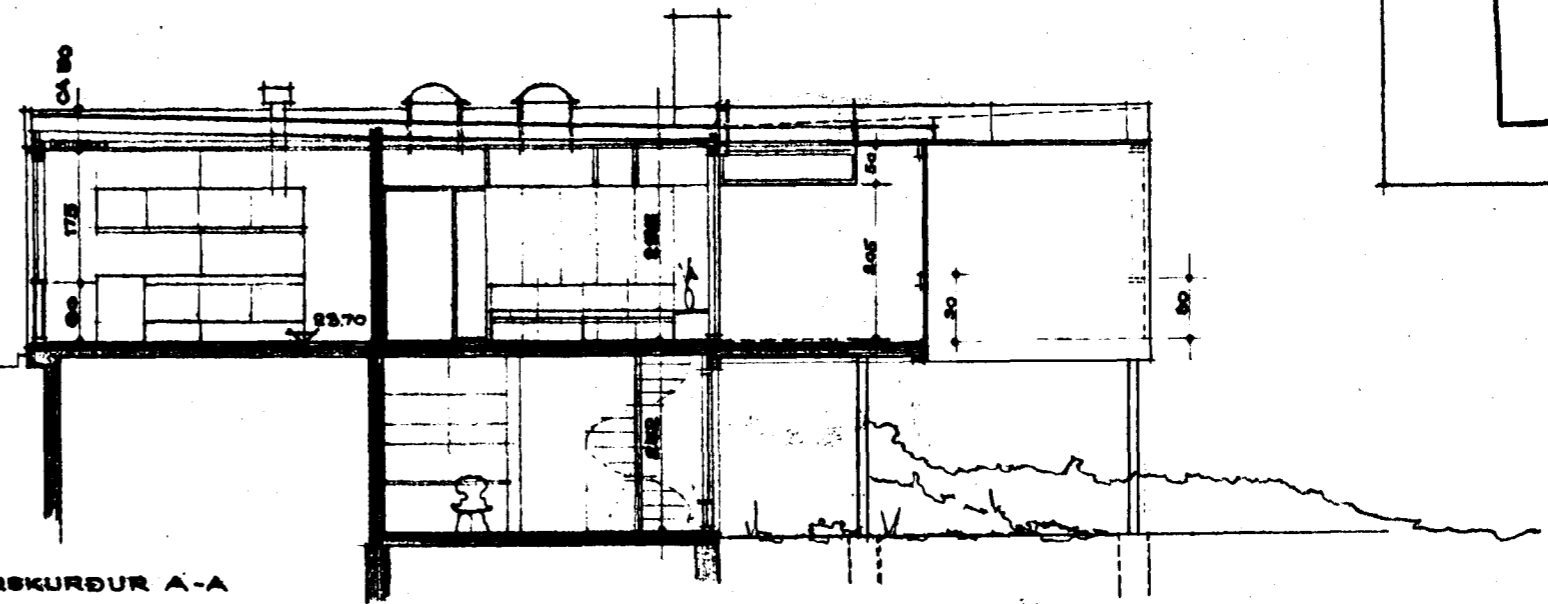
BLAD NR. 1



AFSTÖÐUMYND, M. 1:500

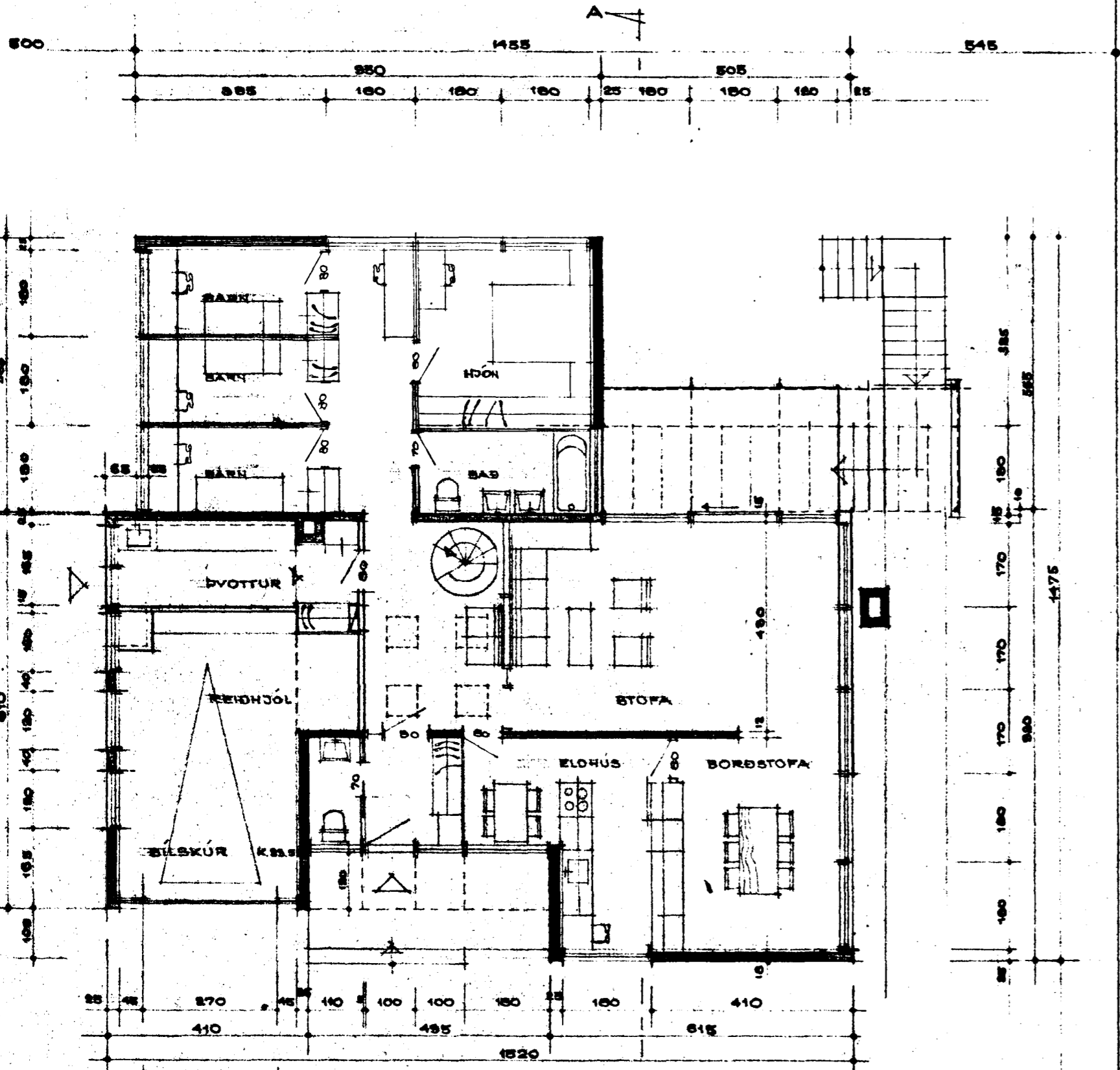
LÓÐ 748 M²
1. HÆÐ CA. 145 M²
BÍLSKÚR = 85,2 M²
KJALLARI = 83 M²

MÚS ÁSAMT BÍLSKÚR CA. 720 M²

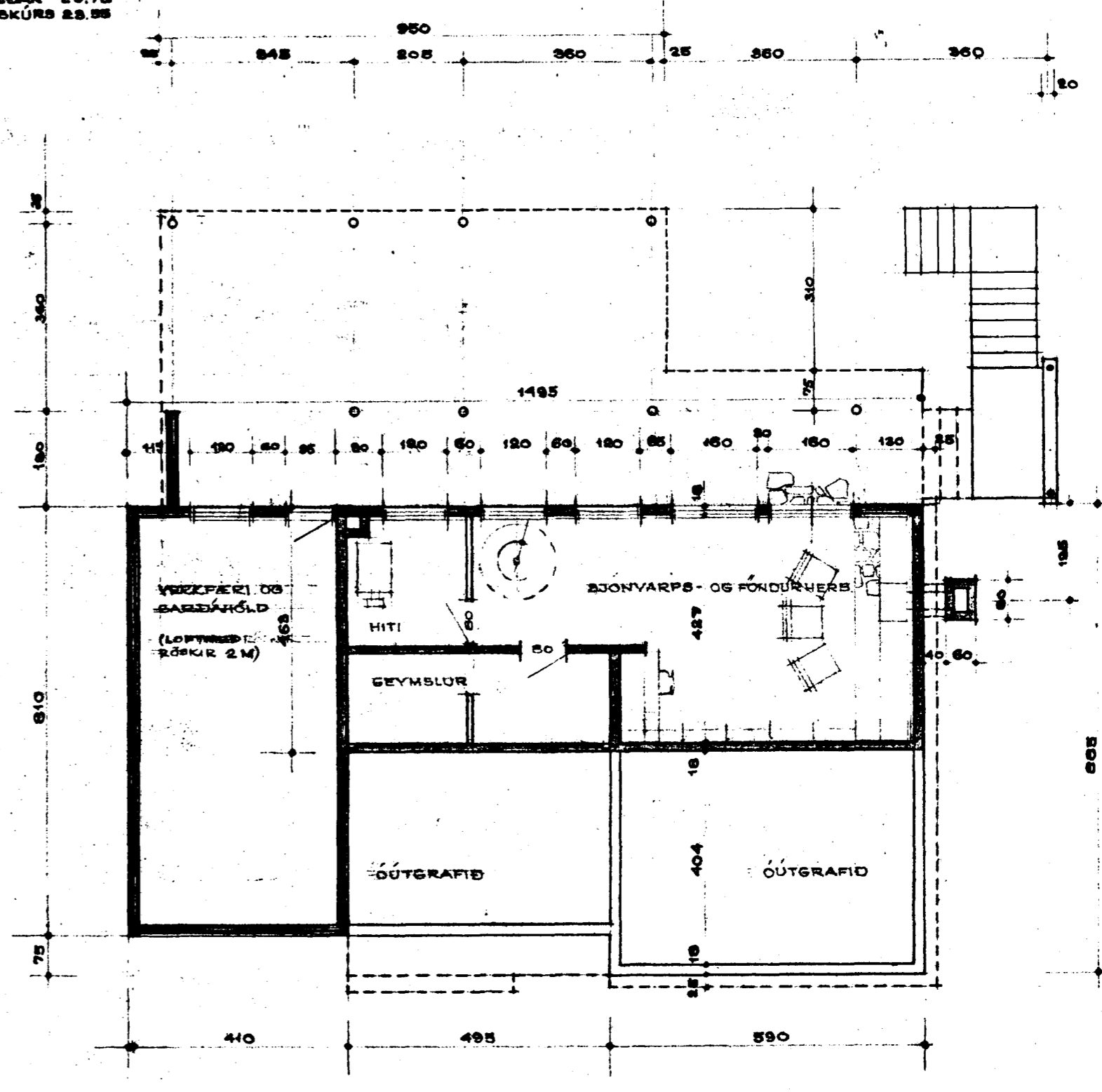


DVERSKURÐUR A-A

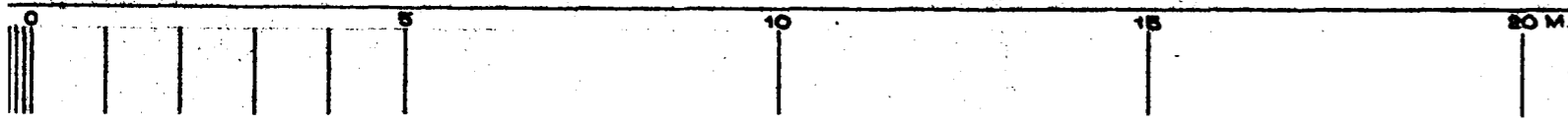
SÓLPKÖTI 1. HÆÐAR 23,70
BÍLSKÚRS 23,98



GRUNNMYND 1. HÆÐAR, M. 1:100



GRUNNMYND KJALLARA



M. 1:100

B-GATA 18 HAFNARFIRÐI, SIGDÓR SIGURÐSSON
AFSTÖÐUMYND M. 1:500 GRUNNMYNDR OG SKURÐUR M. 1:100

BREYTT Í MARZ '68 REYKJAVÍK Í OKT. 1966
Sigurður Þ. Þorláksson